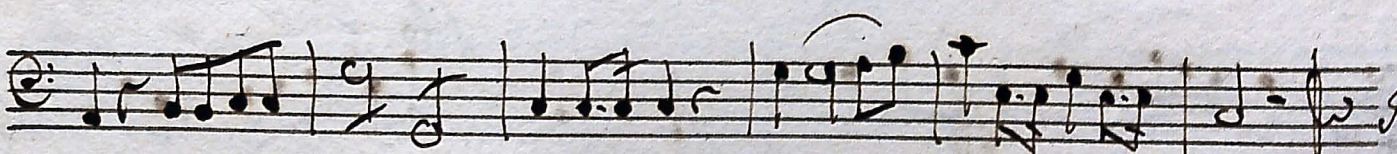
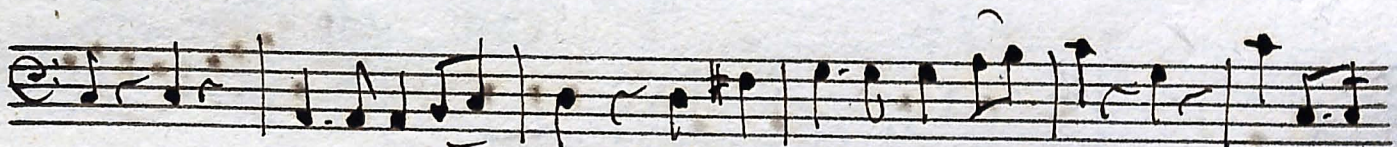
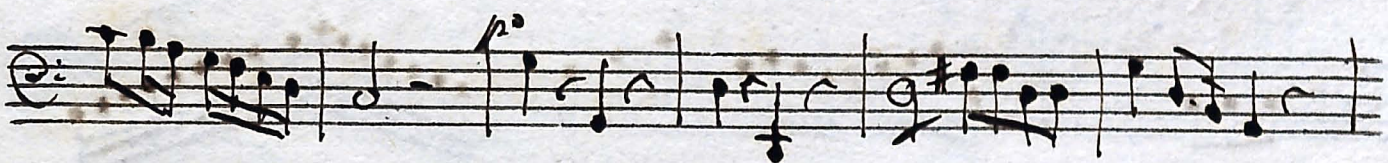
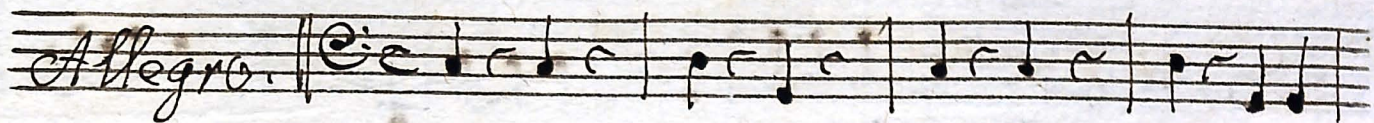


Qui habitat. w 3. Voc., contr. Strw.

Violoncello.



Wolff

Handwritten musical notation on a five-line staff, featuring various note values and rests.

Handwritten musical notation on a five-line staff with a "Solo" annotation above the notes.

Handwritten musical notation on a five-line staff, showing melodic lines and rests.

Handwritten musical notation on a five-line staff with "for" and "Solo" annotations.

Handwritten musical notation on a five-line staff, including slurs and various note values.

Handwritten musical notation on a five-line staff, featuring slurs and dynamic markings.

Handwritten musical notation on a five-line staff with a "Solo" annotation and complex rhythmic patterns.

Handwritten musical notation on a five-line staff, showing a sequence of notes and rests.

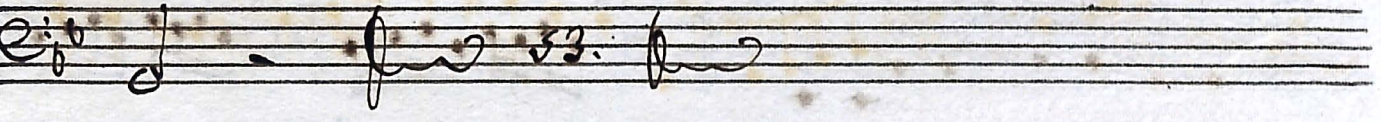
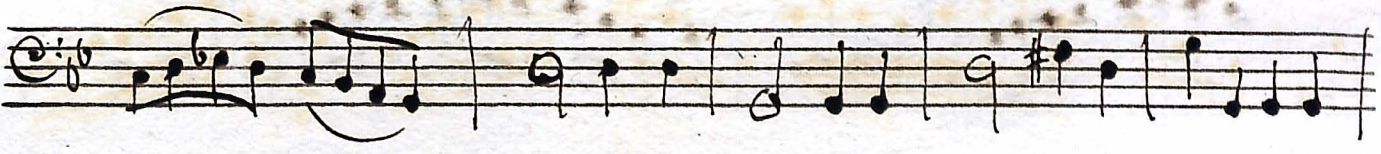
Handwritten musical notation on a five-line staff, including slurs and various note values.

Handwritten musical notation on a five-line staff ending with the instruction "Volve Presto".

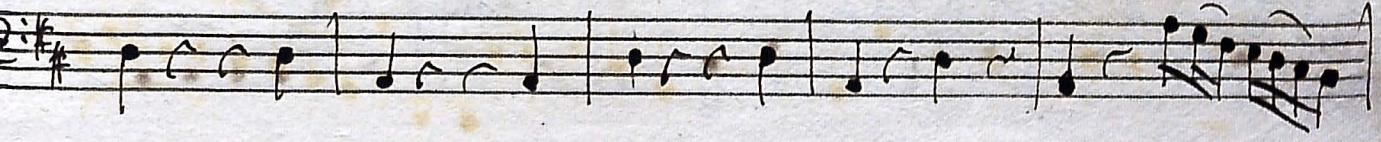
solo

m

scuto circumdabit



Cadant a latero.



Wolff

6

Handwritten musical notation on a single staff, featuring a treble clef, a key signature of one sharp (F#), and a common time signature (C). The melody consists of quarter and eighth notes, ending with a 'solo' marking and a checkmark.

Handwritten musical notation on a single staff, featuring a treble clef, a key signature of one sharp (F#), and a common time signature (C). The notation includes slurs and accents over groups of notes.

Handwritten musical notation on a single staff, featuring a treble clef, a key signature of one sharp (F#), and a common time signature (C). A 'solo' marking is present above the staff.

Handwritten musical notation on a single staff, featuring a treble clef, a key signature of one sharp (F#), and a common time signature (C). The notation includes slurs and accents over groups of notes.

Handwritten musical notation on a single staff, featuring a treble clef, a key signature of one sharp (F#), and a common time signature (C). A 'solo' marking is present above the staff.

Handwritten musical notation on a single staff, featuring a treble clef, a key signature of one sharp (F#), and a common time signature (C). The notation includes slurs and accents over groups of notes.

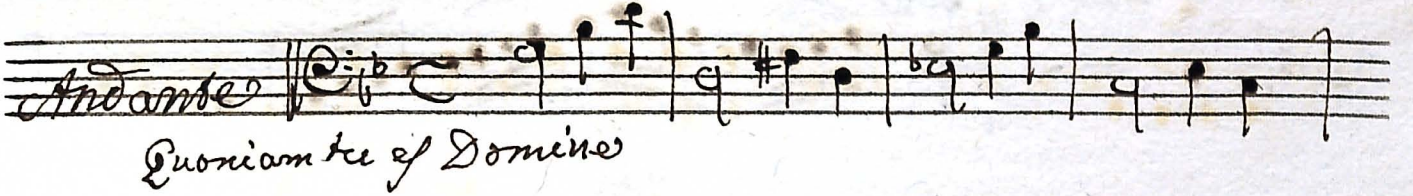
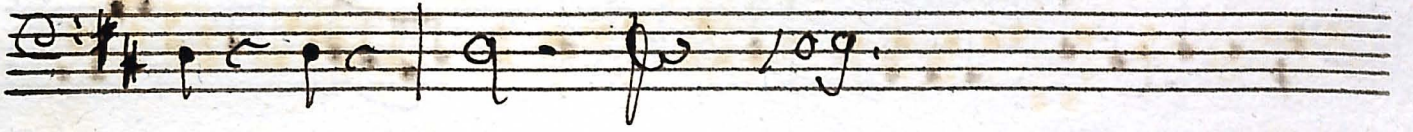
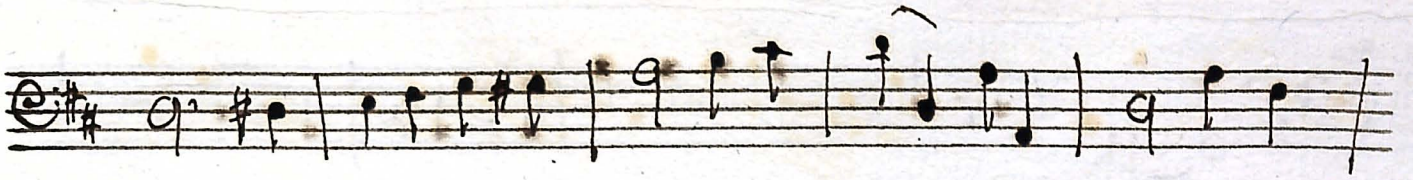
Handwritten musical notation on a single staff, featuring a treble clef, a key signature of one sharp (F#), and a common time signature (C). The notation includes slurs and accents over groups of notes.

Handwritten musical notation on a single staff, featuring a treble clef, a key signature of one sharp (F#), and a common time signature (C). The notation includes slurs and accents over groups of notes.

Handwritten musical notation on a single staff, featuring a treble clef, a key signature of one sharp (F#), and a common time signature (C). The notation includes slurs and accents over groups of notes.

Handwritten musical notation on a single staff, featuring a treble clef, a key signature of one sharp (F#), and a common time signature (C). The notation includes slurs and accents over groups of notes.

Handwritten musical score consisting of 12 staves. The notation includes treble and bass clefs, a key signature of one sharp (F#), and various musical notations such as notes, rests, and slurs. The word "solo" is written above the third and fifth staves. The word "Volta" is written at the end of the twelfth staff.



Quoniam tu es Domine





Volks

Andantino. 



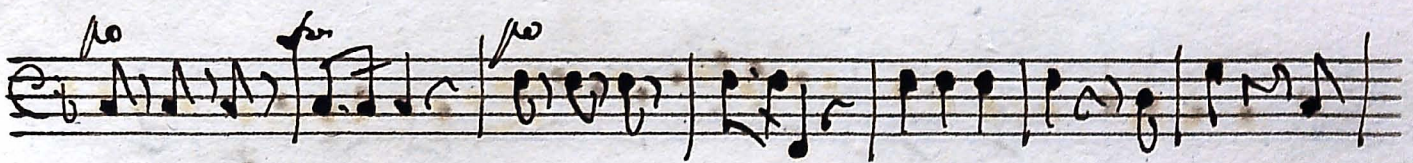
















Andantino 3/4 *Storia* *fa*

no

22. *vicut erat.*

Sanctus