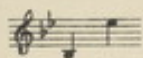


Nº 1 in B^b



Nº 2 in D^b



APART



THE POEM BY

Frances Bacon Paine

THE MUSIC BY

H. T. BURLEIGH

Price 60 cents.

THE WILLIAM MAXWELL MUSIC CO.

8 EAST SIXTEENTH STREET

NEW YORK

Library of Congress MUSIC
CLASS. M 1621
ACC. NO. 155590

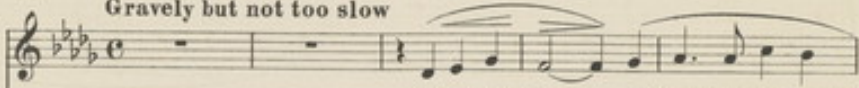
LIBRARY OF CONGRESS
THE MUSIC DEPARTMENT
SEP 18 1905
SEP 15 1905
102508
SOFT B.

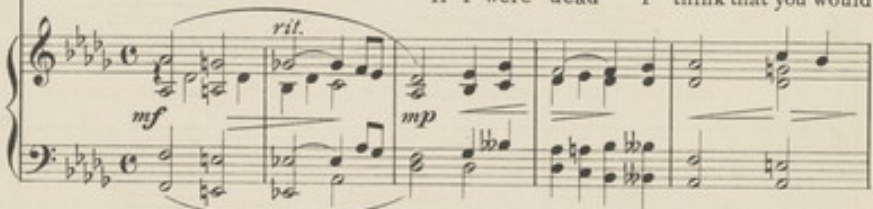
APART

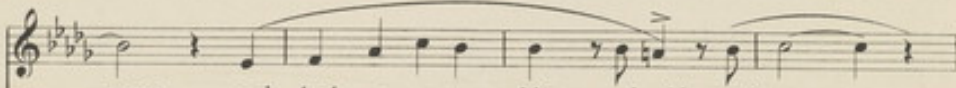
Words by
FRANCES BACON PAINE


Music by
H. T. BURLEIGH

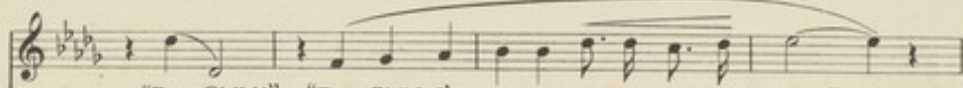
Gravely but not too slow

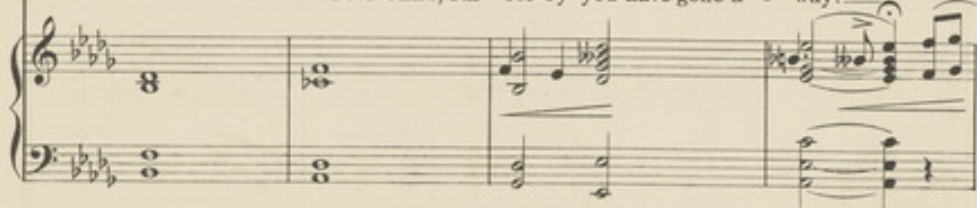
Voice.  If I were dead I think that you would

Piano.  *mf* *rit.* *mp*

 come and look up - on me white and cold and say: —



 "Poor Child!" "Poor Child, I'm sor-ry you have gone a - way!"



ff *dim.* *rit.*

But just be - cause — my bo - dy has to live — Through

mp *cresc.*

hopeless years you do not come and say: "Dear Child!" "Dear Child — I'm

rit.

glad that you are here to day!"

rit. *calm* *pp*

NEW SONGS AND BALLADS + SUCCESSFUL COMPOSERS

COMPOSER	PRICE	COMPOSER	PRICE
ALLING, WILLIS H.		LITTLE, ALFRED E.	
<i>Thou and I</i> G and B.....	.40	<i>The Message</i> High Voice.....	.50
<i>The Soul's Desire</i> G.....	.50	<i>The Land of the Lost</i> Medium Voice.....	.50
ANDREWS, ADDISON F.		<i>Love is Enough</i> F and A.....	.60
<i>Enchantment</i> G and B.....	.60	<i>A Song of Welcome</i> E♭ and G.....	.60
<i>Fill a Glass</i> High Voice.....	.60	<i>Spring's Awakening</i> B♭ and D.....	.60
ASHTON, HENRY		LUND, N. CHARLOTTE	
<i>Land of the Blessed</i> F and B.....	.60	<i>Good Night</i> Medium Voice.....	.60
<i>Hurrah for the Boundless Sea</i> Bass Song.....	.60	MARZO, EDUARDO	
AVERY, STANLEY R.		<i>A Dream of Heaven</i> E♭, F and A.....	.75
<i>Song of Tenney</i> D and F.....	.40	MARKS, J. CHRISTOPHER	
<i>I Love Thee Still</i> Medium Voice.....	.40	<i>Sometimes</i> [Eternal Peace] (Sacred) F and A.....	.60
<i>Quarrel</i> Medium Voice.....	.40	<i>My Song shall be of Mercy</i> D and G.....	.60
<i>Dawn of Life</i> (Christmas) B♭ and D.....	.60	NEIDLINGER, W. H.	
BARTLETT, HOMER N.		<i>Saviour, Breathe an Evening Blessing</i> E♭ and G.....	.60
<i>Elaine</i> C and E.....	.60	<i>The Red Rose Tree</i> Medium Voice.....	.60
<i>Life is a Sonnet</i> High Voice.....	.60	<i>Love's Despair</i> Medium Voice.....	.60
BENNET, HOWARD		<i>Sweetheart</i> B♭ and D.....	.60
<i>In Rose Time</i> (Waltz Song) D and F.....	.75	<i>Awake, my Love</i> A♭, C and E.....	.60
BURLEIGH, H. T.		<i>Wearry Hours</i> F and A.....	.60
<i>Joan</i> B♭, D♭ and E.....	.60	<i>Together</i> G, B♭ and D.....	.60
<i>Mammy's Li'l Baby</i> D and F.....	.50	<i>Fairy Tales in Song</i> Group 1:	
<i>Love's Garden</i> Soprano.....	.50	a. <i>When the May-apple Grows in Spring</i>	
<i>Heigh-Ho</i> B♭ and D.....	.60	b. <i>The Funny Little Game and his Big Bass Drum</i>	.60
<i>Folk Song</i> E♭ and G.....	.60	c. <i>In the Tops of the Growing Corn</i>	
<i>Love's Pleading</i> Medium Voice.....	.60	<i>Going a Dreaming</i> B♭ and D.....	.60
<i>Just my Love and I</i> D and F.....	.60	<i>The Dream Man</i> F and A.....	.60
<i>One Day</i> Medium Voice.....	.60	<i>Rockie' in de Win'</i> (A Raccoon Lullaby) E♭ and G.....	.60
<i>If Life be a Dream</i> D and F.....	.60	<i>The Glorious Morn</i> (Christmas) D, F, and A.....	.60
<i>O Perfect Love</i> (Sacred) F and A.....	.60	<i>Christ's Victory</i> (Easter) C, E♭ and G.....	.60
<i>O Why art Thou not Near me</i> E♭ and G.....	.60	<i>Te ne Venez Pas auzer Chose</i> (I do not ask) C and E.....	.60
<i>Way of the World</i> C and E.....	.60	<i>Far from my Heavenly Home</i> D Minor and F Minor.....	.60
<i>Waiting</i> D and F.....	.60	<i>Go, Lovely Rose</i> A and D.....	.60
<i>Through Peace to Light</i> D♭ and F.....	.60	<i>My Lady</i> F and A.....	.60
<i>O Love of a Day</i> E♭ and G.....	.60	<i>I Love my Joan</i> D and F.....	.60
<i>Apart</i> B♭ and D.....	.60	<i>Squirrel and the Humble Bee</i> E♭ and F.....	.60
<i>Achievement</i> Medium Voice.....	.60	PIGOTT, ROBERT STUART	
<i>And as the Gulls Soar</i> F and A.....	.60	<i>Nora</i> C and E.....	.60
<i>Tide</i> D and F.....	.60	PURDY, MCCrackan	
<i>Dream Land</i> Medium Voice.....	.60	<i>A Little Serenade</i> D and F.....	.50
CARTER, ERNEST		<i>My Love</i> F and A.....	.60
<i>Rosemary</i> Medium Voice.....	.60	PERCIPPE, F. LEON	
<i>Gold and Love for Dearly</i>60	<i>Sweetheart, Good Night</i> E♭ and G.....	.60
CASE, HENRY LINCOLN		REMICK, BERTHA	
<i>Love and Fame</i> E Minor and G Minor.....	.60	<i>Come into the Garden, Love</i> F and B.....	.50
<i>Wearry of Earth</i> E♭ and A.....	.60	<i>Yesterday and To-day</i> High Voice.....	.50
CHAFFIN, LUCIEN G.		SEALY, FRANK	
<i>So Dear</i> E♭ and G.....	.40	<i>My Love is True</i> High Voice.....	.50
<i>Good Night</i> Contralto.....	.60	SHELLEY, HARRY ROWE	
<i>Softly now the Light of Day</i> A♭ and C.....	.60	<i>King of Kings</i> (Easter) C, D♭ and D.....	.60
<i>Justie</i> E♭ and G.....	.60	<i>The Dawn of Hope</i> (Christmas) D♭, E♭ and G.....	.60
CADMAN, CHAS. WAKEFIELD		<i>O Day of Rest and Gladness</i> B♭ and D.....	.60
<i>My Heart</i> Medium Voice.....	.60	<i>The Angel's Song</i> E♭, F and A.....	.60
COLERIDGE-TAYLOR S.		<i>The Homeland</i> B♭, C and E.....	.60
<i>A Vision</i> B♭ and D.....	.60	<i>Now the Day is Over</i> (Sacred Duet) High & Low Voice.....	.60
<i>If I Could Love Thee</i> F, G and A.....	.60	<i>My Heart's Desire</i> C, E♭ and F.....	.60
<i>Love's Passing</i> F and A.....	.60	SHEPARD, THOMAS	
<i>Generative</i> D and F.....	.60	<i>Helen's Song</i> B♭ and D.....	.60
<i>The Violet Bank</i> Medium Voice.....	.60	SMITH, H. WAKEFIELD	
CHAPMAN, GEORGE		<i>The Lily and the Ribcuff</i> D and F.....	.50
<i>Had I but You</i> Medium Voice.....	.50	<i>The Humming-bird and the Flower</i> Medium Voice.....	.50
DANNENBERG, LOUIS		SPROSS, CHAS. GILBERT	
<i>My Master and my Friend</i> (Sacred) D♭ and E.....	.60	<i>I Heard the Voice of Jesus Say</i> Contralto.....	.60
EDWARDS, JULIAN		STANLEY, HERBERT	
<i>My True Love hath my Heart</i> G and B.....	.60	<i>Love's Star</i> Tenor Song.....	.60
<i>The Rose and the Lark</i> Contralto.....	.60	STARR, T. B.	
<i>My Heart would Break</i> B♭ and D.....	.60	<i>Jesus, Meek and Gentle</i> E♭, G and B.....	.60
<i>At Dawn</i> G and B.....	.60	<i>The Courts of Heaven</i> A and C.....	.60
<i>To a Faded Rose</i> C and E.....	.60	THOMSON, SYDNEY	
FABIAN, CARL		<i>Calm on the Listening Ear</i> (Christmas) B♭ and D.....	.60
<i>The Flowers Close at Eve</i> Medium Voice.....	.60	<i>Thine Eternally</i> D and F.....	.60
GRANT, E. M.		WALLER, HENRY	
<i>Were we in Love</i> B♭ and D.....	.60	<i>May Carol</i> High Voice.....	.50
<i>Sevilla</i> (Waltz Song) Soprano.....	.60	WODEL, F. W.	
JORDAN, JULIAN		<i>If I were Your Sweetheart</i> Medium Voice.....	.60
<i>My Dream Love Fair</i> A♭ and C.....	.50	YOUNG, WALTER S.	
KEMP, VICTOR		<i>Hymn of Thanksgiving</i> B♭ and D.....	.60
<i>For Thee</i> B♭ and D.....	.50	<i>Love's Reverie</i> F and A.....	.60
KLEIN, MANUEL			
<i>Forget me Not</i> Medium Voice.....	.50		
<i>The Friar and the King</i> Bass Song.....	.50		

THE WILLIAM MAXWELL MUSIC COMPANY—NEW YORK