

**Jean-Baptiste  
Barrière**

**Sonate 3**

**pour**

**Violoncelle  
et  
Basse continue**

**herausgegeben**

**von**

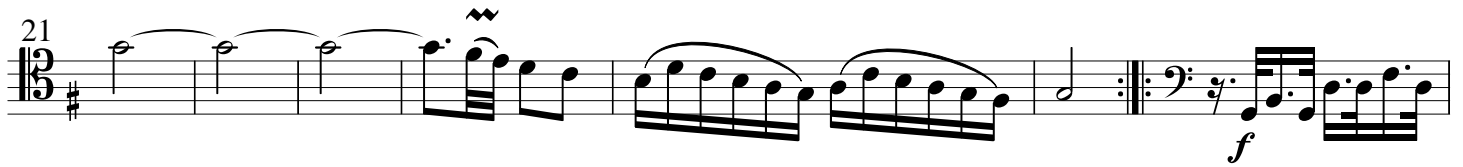
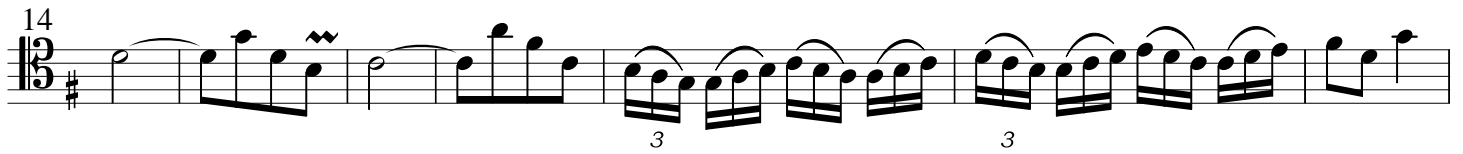
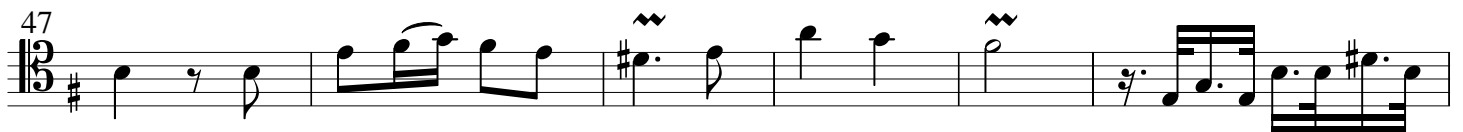
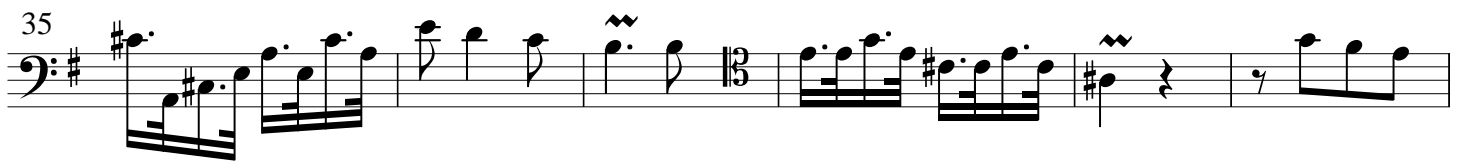
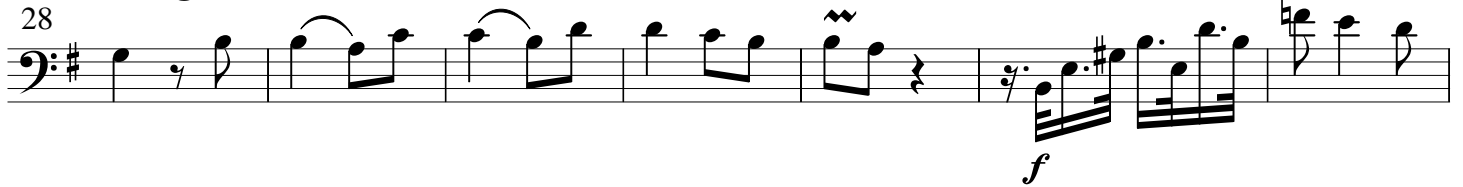
**Werner Jaksch**

# Sonate 3

*Largo staccato**Adagio*

Jean-Baptiste Barrière

Violoncello 1

*Adagio*

53

Musical staff 53-58 in 3/8 time, key of D major. It begins with a treble clef, a key signature of one sharp (F#), and a 3/8 time signature. The melody starts with a quarter rest, followed by eighth and sixteenth notes. A dynamic marking of *f* (forte) is placed at the end of the staff.

59

Musical staff 59-64 in 3/8 time, key of D major. It continues the melody with eighth and sixteenth notes. A triplet of eighth notes is marked with a '3' below it.

65

Musical staff 65-69 in 3/8 time, key of D major. It features a triplet of eighth notes marked with a '3' below it, followed by a half note and a quarter note.

70

Musical staff 70-74 in 3/8 time, key of D major. It contains four triplet markings, each with a '3' below it, over eighth notes. The staff concludes with a double bar line and repeat dots.

### Gavotte 1

Musical staff 1-3 in 3/8 time, key of D major. It begins with a bass clef, a key signature of one sharp (F#), and a 3/8 time signature. The melody starts with a quarter rest, followed by eighth and sixteenth notes.

4

Musical staff 4-7 in 3/8 time, key of D major. It continues the melody with eighth and sixteenth notes.

8

Musical staff 8-12 in 3/8 time, key of D major. It features a repeat sign at the beginning and a dynamic marking of *f* (forte) at the end.

Fine

13

Musical staff 13-16 in 3/8 time, key of D major. It continues the melody with eighth and sixteenth notes.

17

Musical staff 17-20 in 3/8 time, key of D major. It concludes the piece with a double bar line and repeat dots.

# Gavotte 2

1 3/8

6

Fine

*Adagio*

11

16

a tempo

*f*

Gavotte 1 da copo

*Adagio*

*Allegro*

3

7

11

14

16

