

CARMEN

OPÉRA-COMIQUE en 4 Actes de GEORGES BIZET.

FANTAISIE BRILLANTE

FRANÇOIS BORNE

FLÛTE.

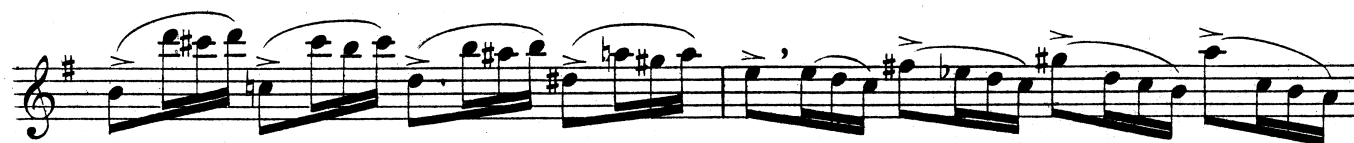
Allegro moderato.

15

SOLO dolce.



Allegro.



$\text{♩} = 58$ 4 *mf* *sostenuto.*

cre - scen - do

fff *dim.* Moderato. *p léger.*

cre - scen - do *ff*

rit.

Tempo. *pp*

cre - scen - do

f *dim.*

FLÛTE.

cre - scen - do

Pour ce passage, on doit prendre les doigtés les plus faciles afin de donner plus de brio à l'exécution.

Même mouvt!

pp tranquillement.

smorzando.

rit. ppp

All. mod.º

13

HABANERA.

All.º quasi and.º

SOLO.

dolcissimo.

bien lié.

MAJEUR.

p

pp

Large.

ff

10

1^{re} VARIATION.

The first variation consists of five staves of music in a minor key. The first staff begins with a *mf* dynamic. The second staff also starts with *mf*. The third staff includes a *rall.* marking followed by a *Tempo.* marking, with dynamics of *mf* and *dim.* The fourth staff ends with a *mf* dynamic. The fifth staff begins with *dim.* and ends with a *rit.* marking.

MAJEUR.

The major section consists of five staves of music in a major key. The first staff is marked *sans presser.* The second staff begins with a *pp* dynamic. The third staff continues with *pp*. The fourth staff features a *pp* dynamic. The fifth staff concludes with a triplet of eighth notes and a final chord.

2^e VARIATION.

FLÛTE.

Lento.

dolce.

ff

pp

ff

pp

cresc.

f

pp

f

pp

ff

pp

ff

pp

animez un peu e cre - scen -

do.

avec brio.

ff

CHANSON DE BOHÈME ET FINAL.

(♩=100) 19 SOLO. *p* très doux.

Pressez. *cresc.* *f* plus vite.

p *f*

cre - scen - do rit. *ff*

pressez davantage.

ff

1° Tempo. SOLO. *p* dolce.

Tempo. *rit.* *cresc.*

ff

FLÛTE.

The musical score for Flute on page 7 consists of ten staves of music. The first two staves are in G major and 2/4 time, featuring a melodic line with slurs and a descending sequence of notes. The third staff begins with the tempo marking *All. mod.º* and a dynamic of *p*. The fourth staff includes the markings *rit. grazioso.* and features a fermata. The fifth staff is marked *delicatamente.* and *poco rit.*. The sixth staff is marked *Presto.* and *f*. The seventh staff is marked *p coulé ou détaché.*. The eighth staff is marked *f*. The ninth staff is marked *ff*. The tenth staff concludes the piece with a final note and a fermata.