

О С Е Н Ъ .

HERBST.

XI.

C. CUI.

Moderato.

Piano introduction in G major, 3/4 time. The music is marked 'Moderato' and 'p' (piano). It features a melody in the right hand and accompaniment in the left hand, with a repeat sign at the end.

*p*

Лас - точ - ки про - па - ли, а вче - ра съ за - реи  
 Fort sind nun die Schwal - ben, hab es schon ge - sehn,

Vocal line and piano accompaniment for the first verse. The piano part is marked 'p'.

*poco accel.*

все гра - чи ле - та - ли, да какъ сътъ мелъ - ка - ли вонъ надъ тои го  
 Krä - hen wie die Schat - ten zo - gen von den Mat - ten ü - ber je - ne

Vocal line and piano accompaniment for the second verse. The tempo is marked 'poco accel.' and the dynamics are 'f' (forte).

*a tempo*

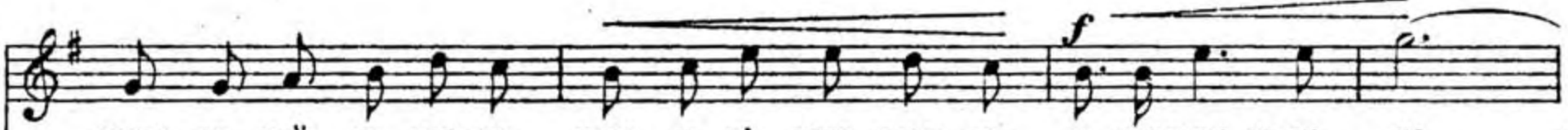
*p*



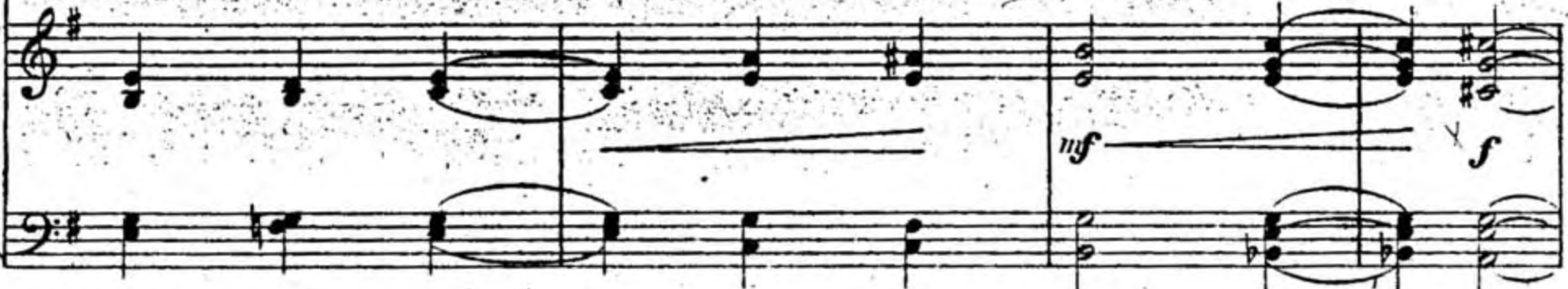
рой                    Съ ве - че - ра нсе спят - - ся                    На дво - рѣ тем - но;  
Höhn                    A - bends lockt's zum Schla - - fen;                    Stras - sen ein - sam sind,



*p*

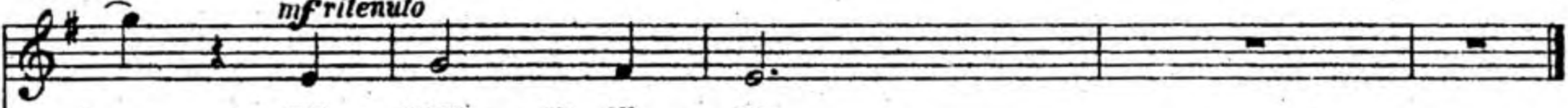


лѣсть су - хой ва - лѣт - ся;    ночь - ю вѣ - теръ злѣт - ся    в стучитъ въ ок - но...  
bei dem dun - klen Wet - ter    flie - gen wel - ke Blät - ter,    an dem Fen - ster tobt's



*mf*

*mf ritenuto*



сту - читъ въ ок - но.  
es heult der Wind.



*pp*