

Tristis est anima mea

Soprano

Responsório Nº 2

Pe. José Maria Xavier
(1819 - 1887)

Andantino ♩ = 40

p Tris-tis est a - ni - ma me - a us - que ad mor - tem *ff* sus - ti - ne - te hic

5

p et vi - gi - la - te me - cum nunc vi - de - bi - tis tur - bam quæ quæ cir - cun - da - bit quæ cir - cun - da - bit me.

Allegro moderato ♩ = 120

10

f Vos fu - gam ca - pi - e - tis, vos fu - gam ca - pi - e - tis et e - go va - dam

14

e - go va - dam et e - go va - dam va - dam Vos fu - gam ca - pi -

19

e - tis, vos fu - gam ca - pi - e - tis et e - go va - dam e - go va - dam im - mo -

24

Fine
la - ri pro vo - bis, im - mo - la - ri pro vo - bis, im - mo - la - ri pro vo - bis.

Lento

Solo

31

f Ec - ce ap - pro - pi - quat ap - pro - pin - quat ho - ra et Fi - li - us ho - mi - nis tra - de - tur tra -

38

D.S. al Fine
de - tur in ma - nus pec - ca - to - rum pec - ca - to - rum.

Tristis est anima mea

Alto

Responsório N° 2

Pe. José Maria Xavier
(1819 - 1887)

Andantino ♩ = 40

p Tris-tis est a - ni - ma me - a us - que ad mor - tem *ff* sus - ti - ne - te hic

5

p et vi - gi - la - te me - cum nunc vi - de - bi - tis tur - bam quæ quæ cir - cun - da - bit quæ cir - cun - da - bit me.

10

♩ Allegro moderato ♩ = 120

f Vos fu - gam ca - pi - e - tis, vos fu - gam ca - pi - e - tis et e - go

14

va - dam va - dam et e - go va - dam e - go va - dam Vos fu - gam ca - pi -

19

e - tis, vos fu - gam ca - pi - e - tis et e - go va - dam va - dam im - mo - la - ri

24

pro vo - bis, im - mo - la - ri pro vo - bis, im - mo - la - ri pro vo - bis. *Fine*

31

Lento

D.S. al Fine

Tristis est anima mea

Tenor

Responsório Nº 2

Pe. José Maria Xavier
(1819 - 1887)

Andantino $\text{♩} = 40$

p Tris-tis est a-ni-ma me - a us - que ad mor - tem *ff* sus - ti-ne - te hic

5

p et vi-gi-la - te me - cum nunc vi-de-bi-tis tur - bam quæ quæ cir-cun-da - bit quæ cir-cun-da-bit me.

♩ Allegro moderato $\text{♩} = 120$

10

f Vos fu-gam ca - pi - e - tis, vos fu-gam ca - pi - e - tis et e-go va-dam va -

15

dam et e-go va-dam e - go va - dam Vos fu-gam ca - pi - e - tis, vos fu-gam ca - pi -

20

e - tis et e-go va-dam va - dam im-mo-la - ri pro vo - bis, im - mo -

26

la - ri pro vo - bis, im - mo - la - ri pro vo - bis.

Fine **Lento** *D.S. al Fine*
11

Tristis est anima mea

Bass

Responsório Nº 2

Pe. José Maria Xavier
(1819 - 1887)

Andantino $\text{♩} = 40$

p Tris-tis est a - ni - ma me - a us - que ad mor - tem *ff* sus - ti - ne - te hic

5

p et vi - gi - la - te me - cum nunc vi - de - bi - tis tur - bam quæ quæ cir - cun - da - bit quæ cir - cun - da - bit me.

♩ Allegro moderato $\text{♩} = 120$

10

f Vos fu - gam ca - pi - e - tis, vos fu - gam ca - pi - e - tis et e - go va - dam e - go va -

15

dam et e - go va - dam va - dam Vos fu - gam ca - pi - e - tis, vos fu - gam ca - pi -

20

e - tis et e - go va - dam e - go va - dam im - mo - la - ri pro vo - bis, im - mo -

26

la - ri pro vo - bis, im - mo - la - ri pro vo - bis.

Fine **Lento** *D.S. al Fine*
11

Tristis est anima mea

Flute

Responsório N° 2

Pe. José Maria Xavier
(1819 - 1887)

Andantino ♩ = 40

p

ff *p*

f

f *Fine*

Lento *D.S. al Fine*

11

Tristis est anima mea

Clarinet in B \flat

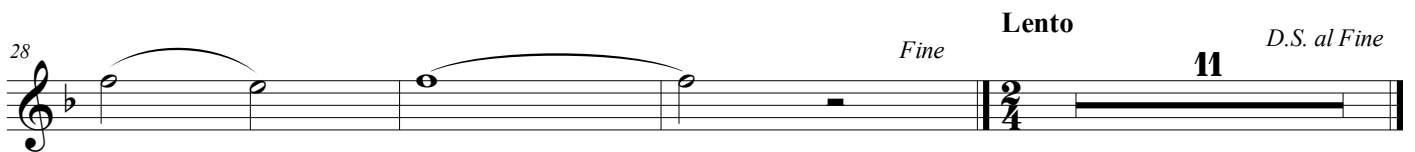
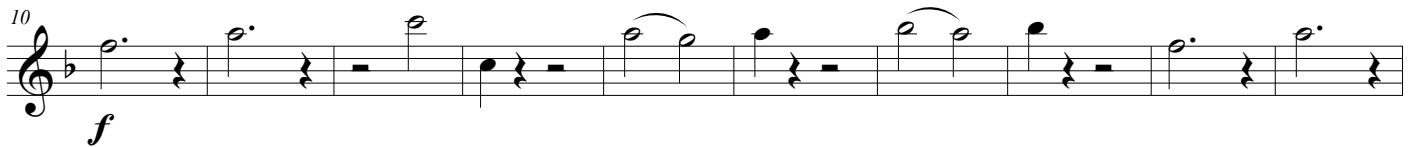
Responsório N $^{\circ}$ 2

Pe. José Maria Xavier
(1819 - 1887)

Andantino $\text{♩} = 40$



♩ Allegro moderato $\text{♩} = 120$



Tristis est anima mea

Trumpet in B \flat

Responsório N $^{\circ}$ 2

Pe. José Maria Xavier
(1819 - 1887)

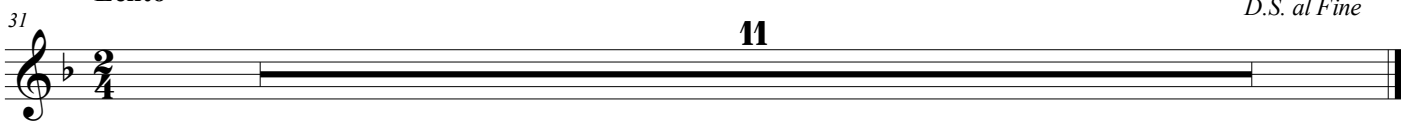
Andantino $\text{♩} = 40$



$\text{♩} = 120$
Allegro moderato



Lento



Tristis est anima mea

Horn in F 1

Responsório N° 2

Pe. José Maria Xavier
(1819 - 1887)

Andantino ♩ = 40

p *ff* *p*

Allegro moderato ♩ = 120

8

f

15

23

Fine

31

Lento

11

D.S. al Fine

Tristis est anima mea

Horn in F 2

Responsório Nº 2

Pe. José Maria Xavier
(1819 - 1887)

Andantino ♩ = 40

Musical notation for the first system, measures 1-7. The key signature is two flats (B-flat and E-flat), and the time signature is common time (C). The notation starts with a piano (*p*) dynamic, followed by a half note B-flat, a half note E-flat, and a half note B-flat. This is followed by a quarter rest, a quarter note D, a quarter note E, a quarter note F, and a quarter note G. The next measure contains a quarter note A, a quarter note B, and a quarter note C, all marked with accents (>). The final measure of this system is a whole note B-flat, marked with piano (*p*). A first ending bracket labeled '2' spans the last two measures.

Allegro moderato ♩ = 120

Musical notation for the second system, measures 8-15. The key signature remains two flats. The notation begins with a forte (*f*) dynamic. It starts with a quarter note B-flat, a quarter note E-flat, a quarter note B-flat, and a quarter note D. This is followed by a quarter note E, a quarter note F, and a quarter note G. The next measure contains a quarter note A, a quarter note B, and a quarter note C, all marked with accents (>). The final measure of this system is a whole note B-flat.

Musical notation for the third system, measures 16-23. The key signature remains two flats. The notation begins with a quarter note B-flat, a quarter note E-flat, a quarter note B-flat, and a quarter note D. This is followed by a quarter note E, a quarter note F, and a quarter note G. The next measure contains a quarter note A, a quarter note B, and a quarter note C, all marked with accents (>). The final measure of this system is a whole note B-flat.

Musical notation for the fourth system, measures 24-31. The key signature remains two flats. The notation begins with a quarter note B-flat, a quarter note E-flat, a quarter note B-flat, and a quarter note D. This is followed by a quarter note E, a quarter note F, and a quarter note G. The next measure contains a quarter note A, a quarter note B, and a quarter note C, all marked with accents (>). The final measure of this system is a whole note B-flat. The system concludes with a double bar line, a first ending bracket labeled '2', and a final double bar line. Above the first ending bracket, the tempo marking 'Lento' and the instruction 'D.S. al Fine' are present. The number '11' is written below the first ending bracket.

Tristis est anima mea

Violin I

Responsório N° 2

Pe. José Maria Xavier
(1819 - 1887)

Andantino $\text{♩} = 40$

4

7

$\text{♩} = 120$
Allegro moderato

10

15

20

25

Fine

Lento

31

36

D.S. al Fine

Tristis est anima mea

Violin II

Responsório Nº 2

Pe. José Maria Xavier
(1819 - 1887)

Andantino $\text{♩} = 40$



Tristis est anima mea

Viola

Responsório N° 2

Pe. José Maria Xavier
(1819 - 1887)

Andantino ♩ = 40

1

6

Allegro moderato ♩ = 120

10

15

20

25

Fine

Lento

31

D.S. al Fine

p

Tristis est anima mea

Violoncello

Responsório Nº 2

Pe. José Maria Xavier
(1819 - 1887)

Andantino ♩ = 40



5

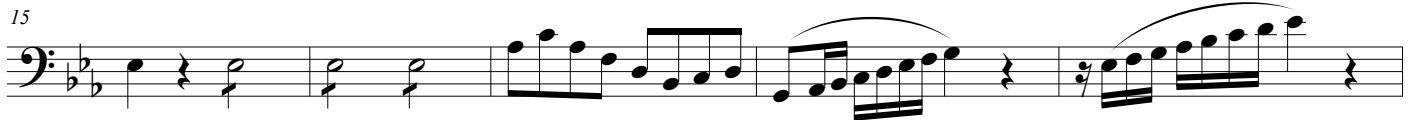


Allegro moderato ♩ = 120

10



15



20



27



35



Tristis est anima mea

Contrabass

Responsório N° 2

Pe. José Maria Xavier
(1819 - 1887)

Andantino ♩ = 40

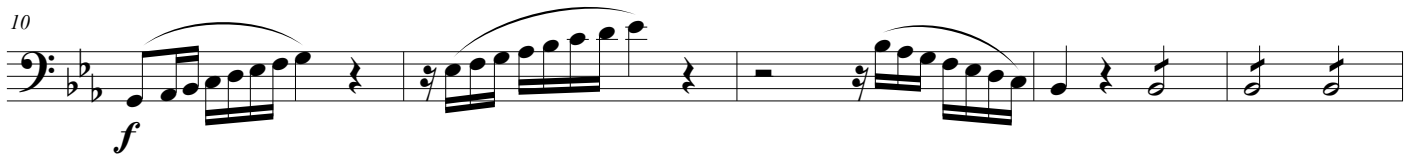


5



Allegro moderato ♩ = 120

10



15



20



27



35

