

And: Noctem:

*p* *sf*

*p* *sf*

*sf*

*sf*



Handwritten musical notation on a single staff, featuring a treble clef, a key signature of one flat (B-flat), and a common time signature (C). The notation includes various rhythmic values such as eighth and sixteenth notes, along with rests and accidentals.

Handwritten musical notation on a single staff, continuing the piece with similar rhythmic and melodic patterns as the first staff.

Handwritten musical notation on a single staff, showing a change in dynamics with a forte (f) marking and a shift in the melodic line.

Handwritten musical notation on a single staff, featuring a mix of eighth and sixteenth notes with some rests.

Handwritten musical notation on a single staff, characterized by a more active rhythmic pattern with many sixteenth notes.

Handwritten musical notation on a single staff, showing a melodic line with some longer note values and rests.

Handwritten musical notation on a single staff, continuing the melodic and rhythmic development of the piece.

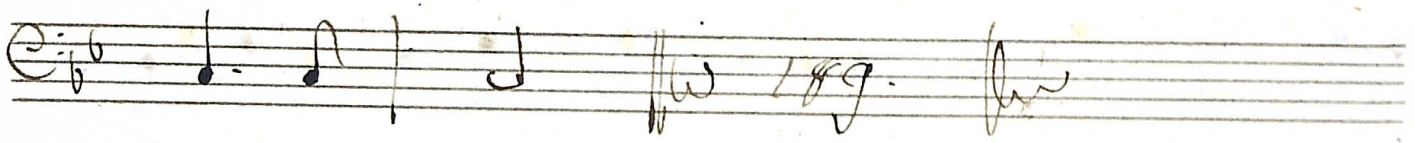
Handwritten musical notation on a single staff, featuring a mix of eighth and sixteenth notes.

Handwritten musical notation on a single staff, showing a melodic line with some rests and accidentals.

Handwritten musical notation on a single staff, concluding the piece with a final melodic phrase.

*Volter*



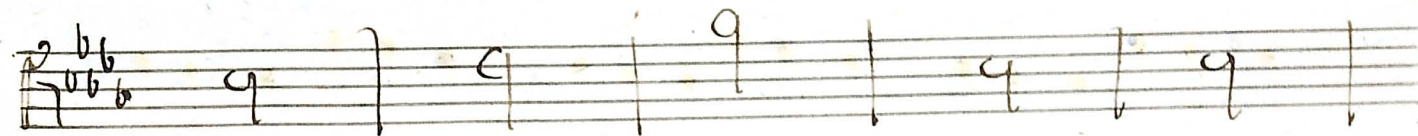
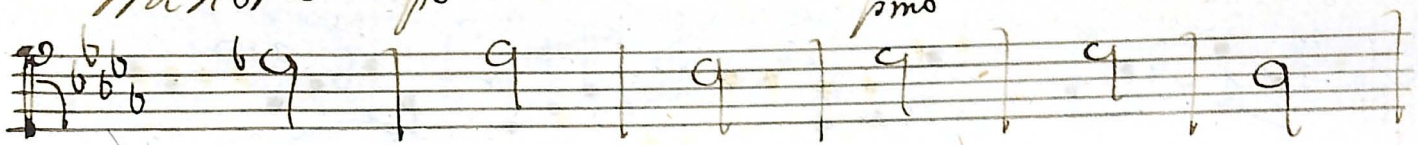


*Allegro*



6  
minore. *po*

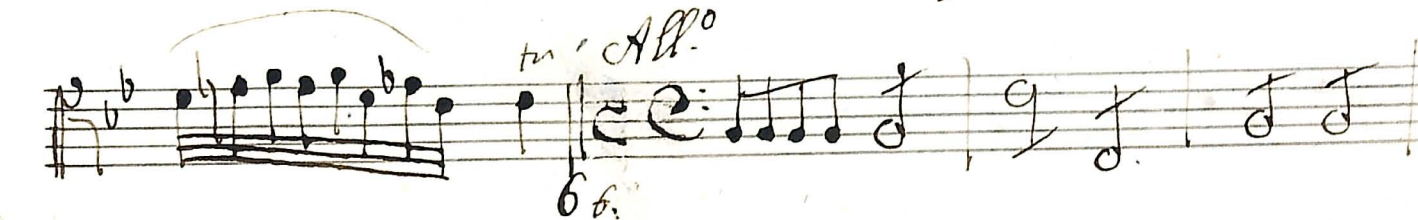
*mo*



maggior



*All.<sup>o</sup>*



Handwritten musical notation on eight staves in G major, 3/4 time. The notation includes various note values, rests, and bar lines.

*A Gau Deo*