

Concertino  
per il  
Clavi cembalo

Viola  
con  
Basso

Del Sigre Wankhal



227/1

*Allo modo*

# Concertino

The first system of the handwritten musical score consists of two staves. The top staff is in treble clef and the bottom staff is in bass clef. Both staves are marked with a common time signature 'C'. The music begins with a series of notes and rests, including some beamed eighth notes and quarter notes. The notation is clear and legible.

The second system of the handwritten musical score consists of one staff in treble clef. It features a complex chordal structure with many notes beamed together, suggesting a dense texture. The notes are arranged in a way that suggests a series of chords or a rapid sequence of notes.

The third system of the handwritten musical score consists of one staff in treble clef. It features a melodic line consisting of a series of eighth notes, some of which are beamed together. The notes are arranged in a way that suggests a rhythmic pattern.

The fourth system of the handwritten musical score consists of one staff in treble clef. It features a complex chordal structure with many notes beamed together, similar to the second system. The notes are arranged in a way that suggests a dense texture.

The fifth system of the handwritten musical score consists of one staff in treble clef. It features a complex chordal structure with many notes beamed together, similar to the second and fourth systems. The notes are arranged in a way that suggests a dense texture.

The sixth system of the handwritten musical score consists of one staff in treble clef. It features a complex chordal structure with many notes beamed together, similar to the second, fourth, and fifth systems. The notes are arranged in a way that suggests a dense texture.

The seventh system of the handwritten musical score consists of one staff in treble clef. It features a melodic line consisting of a series of eighth notes, similar to the third system. The notes are arranged in a way that suggests a rhythmic pattern.



*Segue 2da La Parte*

Handwritten musical notation on a five-line staff. It begins with a treble clef and a key signature of one sharp (F#). The notation is dense, featuring a complex melodic line with many beamed notes, suggesting a fast or intricate piece of music.

Handwritten musical notation on a five-line staff. It begins with a treble clef and a key signature of one sharp (F#). The notation is dense, featuring a complex melodic line with many beamed notes, suggesting a fast or intricate piece of music.

Handwritten musical notation on a five-line staff. It begins with a treble clef and a key signature of one sharp (F#). The notation is dense, featuring a complex melodic line with many beamed notes, suggesting a fast or intricate piece of music.

Handwritten musical notation on a five-line staff. It begins with a treble clef and a key signature of one sharp (F#). The notation is dense, featuring a complex melodic line with many beamed notes, suggesting a fast or intricate piece of music.

Handwritten musical notation on a five-line staff. It begins with a treble clef and a key signature of one sharp (F#). The notation is dense, featuring a complex melodic line with many beamed notes, suggesting a fast or intricate piece of music.

Handwritten musical notation on a five-line staff. It begins with a treble clef and a key signature of one sharp (F#). The notation is dense, featuring a complex melodic line with many beamed notes, suggesting a fast or intricate piece of music.

Handwritten musical notation on a five-line staff. It begins with a treble clef and a key signature of one sharp (F#). The notation is dense, featuring a complex melodic line with many beamed notes, suggesting a fast or intricate piece of music.

Handwritten musical notation on a five-line staff. It begins with a treble clef and a key signature of one sharp (F#). The notation is dense, featuring a complex melodic line with many beamed notes, suggesting a fast or intricate piece of music.

Handwritten musical notation on a five-line staff. It begins with a treble clef and a key signature of one sharp (F#). The notation is dense, featuring a complex melodic line with many beamed notes, suggesting a fast or intricate piece of music.

A handwritten musical score on aged, yellowed paper. The score consists of six systems, each with two staves. The notation is in black ink and includes various musical symbols such as notes, rests, stems, and beams. The first system features a complex, dense passage with many beamed notes. The second system has a more rhythmic, flowing melody. The third system contains several measures with dense, vertical clusters of notes. The fourth system shows a series of beamed eighth notes. The fifth system has a more sparse, melodic line. The sixth system concludes with a few final notes and rests. The paper shows signs of age, including foxing and some staining.

*Stolti Pubito*



Handwritten musical notation on three systems of staves. Each system consists of two staves. The notation includes various rhythmic values, stems, and beams, with some notes having slurs or accents above them. The paper shows signs of age and staining.

Handwritten musical notation on two staves, appearing to be a continuation or a separate section of the piece. It features notes and rests on both staves.

*Solti Subito*

*Andante Segue*

*Andante*

The first system of handwritten musical notation consists of two staves. The top staff is in treble clef and the bottom staff is in bass clef. The time signature is 3/4. The music begins with a treble clef, a key signature of one flat (B-flat), and a 3/4 time signature. The first measure contains a treble clef, a B-flat, and a 3/4 time signature. The notation includes various note values, rests, and some complex rhythmic patterns.

The second system of handwritten musical notation consists of a single treble staff. It begins with a treble clef and a key signature of one flat. The notation features a series of chords and notes, with some notes beamed together.

The third system of handwritten musical notation consists of a single bass staff. It begins with a bass clef and a key signature of one flat. The notation features a series of notes and rests, with some notes beamed together.

The fourth system of handwritten musical notation consists of a single treble staff. It begins with a treble clef and a key signature of one flat. The notation features a series of chords and notes, with some notes beamed together.

The fifth system of handwritten musical notation consists of a single bass staff. It begins with a bass clef and a key signature of one flat. The notation features a series of notes and rests, with some notes beamed together.

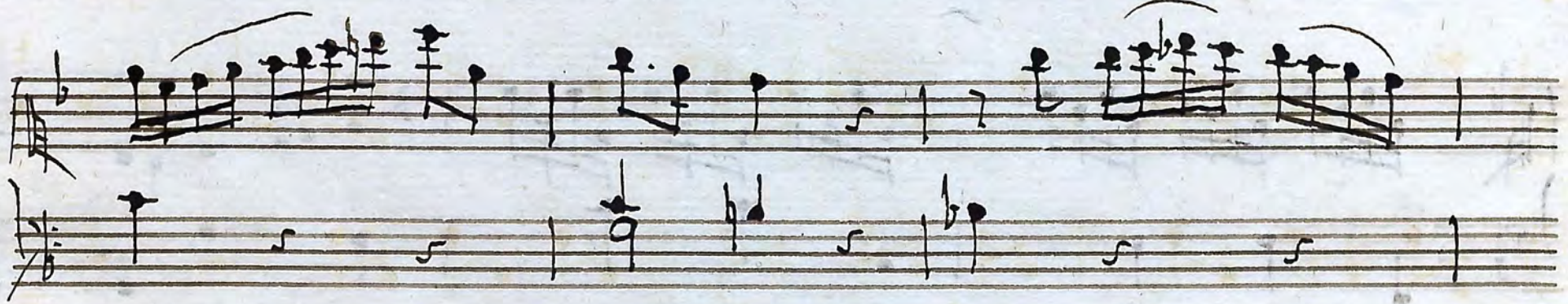
The sixth system of handwritten musical notation consists of a single treble staff. It begins with a treble clef and a key signature of one flat. The notation features a series of chords and notes, with some notes beamed together.

The seventh system of handwritten musical notation consists of a single bass staff. It begins with a bass clef and a key signature of one flat. The notation features a series of notes and rests, with some notes beamed together.





Segue 2<sup>a</sup>  
la parte



This image shows a page of handwritten musical notation on ten staves. The notation is written in black ink on aged, slightly stained paper. The score is organized into five systems, each consisting of two staves. The notation includes various musical symbols such as notes, rests, beams, and slurs. The first staff of each system begins with a clef and a key signature. The music features a mix of rhythmic patterns, including eighth and sixteenth notes, and rests. There are several instances of beamed notes and slurs, indicating complex rhythmic passages. The handwriting is clear and legible, typical of a composer's manuscript. The overall appearance is that of a historical or archival musical score.

*Allo*

*Finale*

Handwritten musical notation for the first system. It features a treble clef, a 2/4 time signature, and a key signature of one sharp (F#). The notation is spread across two staves, with various note values and rests.

Handwritten musical notation for the second system, continuing the piece with two staves of music.

Handwritten musical notation for the third system, continuing the piece with two staves of music.

Handwritten musical notation for the fourth system, concluding the piece with two staves of music.

*mo*

*Variatio*

This image shows a page of handwritten musical notation, likely a variation of a piece. The score is written on ten staves. The first two staves are the most prominent, with the word "Variatio" written in a large, cursive hand on the left. Above the first staff, the word "mo" is written. The music is in 2/4 time, as indicated by the time signature. The notation is dense, featuring many beamed notes, slurs, and complex chordal structures. The paper is aged and shows some staining.

*Variation*



*Variation*



