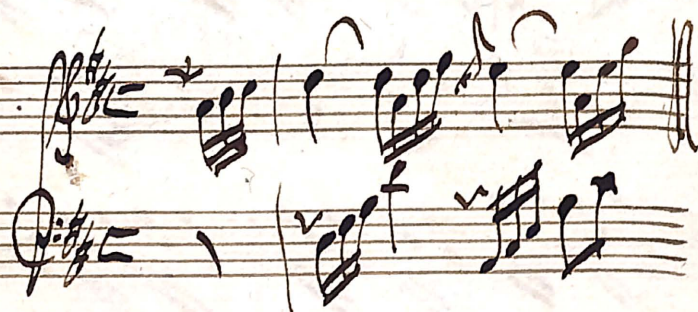


GASPERO SBOREI

Sonata per Cimbalo



Allegro

Handwritten musical notation for the first system, featuring a treble clef and a bass clef with a 2/4 time signature. The music is in G major and includes various rhythmic patterns and ornaments.

Handwritten musical notation for the second system, continuing the piece with treble and bass staves.

Handwritten musical notation for the third system, primarily consisting of a bass staff with a complex rhythmic accompaniment.

Handwritten musical notation for the fourth system, featuring a treble staff with melodic lines and a bass staff.

Handwritten musical notation for the fifth system, showing a treble staff with a melodic line and a bass staff.

Handwritten musical notation for the sixth system, featuring a treble staff with a melodic line and a bass staff.

Handwritten musical notation for the seventh system, primarily consisting of a bass staff with a complex rhythmic accompaniment.

Handwritten musical notation for the eighth system, featuring a treble staff with a melodic line and a bass staff.

Handwritten musical notation for the ninth system, primarily consisting of a bass staff with a complex rhythmic accompaniment.

A handwritten musical score consisting of ten staves. The notation is dense and complex, featuring a variety of rhythmic values, including sixteenth and thirty-second notes, as well as rests. The score is written in a dark ink on aged, slightly yellowed paper. The first staff begins with a treble clef and a key signature of one sharp (F#). The subsequent staves continue the melodic and harmonic development, with some staves showing more intricate rhythmic patterns and others featuring longer note values. The handwriting is fluid and characteristic of a composer's draft.

A handwritten musical score consisting of 12 staves. The notation is dense and includes various musical symbols such as notes, rests, and clefs. The score is written in a cursive style on aged paper. The first two staves appear to be a vocal line, while the remaining ten staves are for instruments, likely a piano and a string ensemble. The music is written in a key signature of one sharp (F#) and a time signature of 4/4. The notation is highly detailed, with many sixteenth and thirty-second notes, and some complex rhythmic patterns. There are some markings like '6' and '9' on the staves, possibly indicating fingerings or measures. The overall appearance is that of a composer's manuscript.

A handwritten musical score consisting of ten staves. The notation is dense and complex, featuring a variety of rhythmic values, including eighth and sixteenth notes, and rests. The staves are arranged in a vertical column, with each staff containing a single line of music. The handwriting is fluid and characteristic of 18th or 19th-century manuscript notation. The paper shows signs of age, with some yellowing and minor stains. The overall appearance is that of a working draft or a composer's sketch.

And:
Cantabile

A handwritten musical score for piano, consisting of ten systems of two staves each. The notation is in a dark ink on aged, slightly yellowed paper. The top left of the page features the tempo markings *And:* and *Cantabile*. The music is written in a style characteristic of 19th-century manuscript notation, with various note values, rests, and dynamic markings. The first system shows a treble clef on the upper staff and a bass clef on the lower staff. The subsequent systems continue with similar clef pairings, though some staves have clef changes. The notation includes many beamed notes, suggesting a flowing, melodic texture. There are some ink blots and signs of wear on the paper, particularly in the middle sections.

A handwritten musical score consisting of 12 staves. The notation is dense and complex, featuring a variety of rhythmic values, including sixteenth and thirty-second notes, as well as rests and ties. The score is written in a cursive, historical style. The first staff begins with a treble clef and a key signature of one sharp (F#). The subsequent staves are grouped by a brace on the left side. The notation includes many beamed notes and intricate patterns, suggesting a highly technical or virtuosic piece of music. The paper shows signs of age, with some staining and discoloration.

*Allegro
con spirito*

A handwritten musical score on aged paper, consisting of eight systems of staves. Each system contains a pair of staves: the upper staff is for the Violin (treble clef) and the lower staff is for the Piano (bass clef). The music is written in a dark ink with some corrections and flourishes. The tempo and mood are indicated by the text 'Allegro con spirito' at the top left. The score features a variety of rhythmic patterns, including eighth and sixteenth notes, and rests. The paper shows signs of age, with some foxing and staining, particularly in the middle section.

A handwritten musical score consisting of eight staves. The notation is dense and includes various musical symbols such as clefs, time signatures, notes, rests, and bar lines. The first staff begins with a treble clef and a key signature of one sharp (F#). The second staff starts with a bass clef and a key signature of one sharp. The third staff uses a treble clef with a key signature of one sharp. The fourth staff begins with a bass clef and a key signature of one sharp. The fifth staff starts with a treble clef and a key signature of one sharp. The sixth staff uses a bass clef with a key signature of one sharp. The seventh staff begins with a treble clef and a key signature of one sharp. The eighth staff starts with a bass clef and a key signature of one sharp. The notation is highly detailed, with many notes and rests, suggesting a complex piece of music.

A handwritten musical score consisting of ten staves. The notation is written in black ink on aged, yellowish paper. The score is organized into five systems, each containing two staves. The top staff of each system is in treble clef, and the bottom staff is in bass clef. The key signature is one sharp (F#), and the time signature is 4/4. The music is highly rhythmic and melodic, featuring many sixteenth and thirty-second notes, often beamed together. There are several measures with complex rhythmic patterns, including triplets and syncopation. The handwriting is fluid and expressive, with some ink bleed-through from the reverse side of the page. The score ends with a double bar line on the tenth staff.

A handwritten musical score consisting of ten staves. The notation is dense and complex, featuring a variety of rhythmic values, including sixteenth and thirty-second notes, as well as rests and dynamic markings. The score is written in a cursive, historical style. The first staff begins with a treble clef and a key signature of one sharp (F#). The notation includes many beamed notes and rests, suggesting a fast or intricate piece. There are some ink smudges and corrections visible, particularly in the lower staves. The paper shows signs of age, with some yellowing and foxing.