

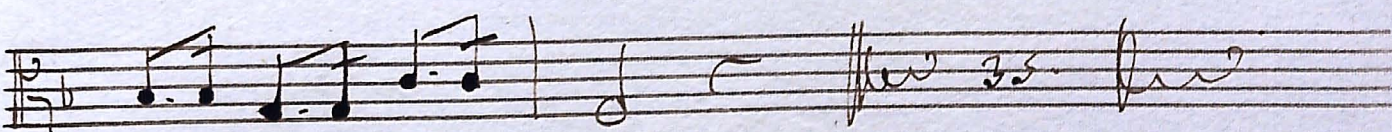
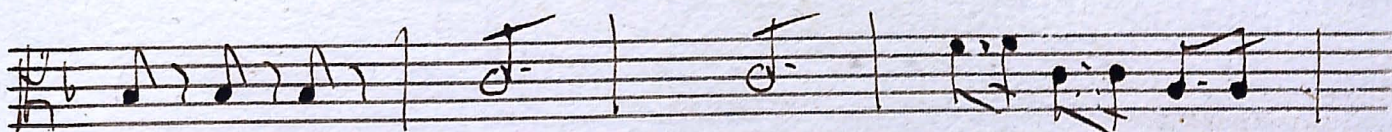
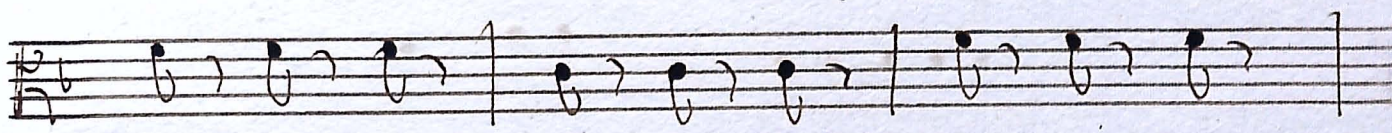
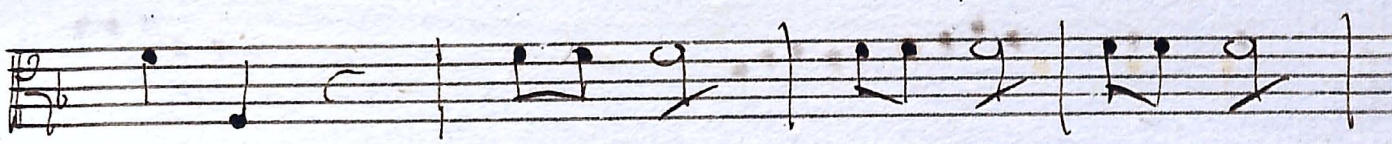
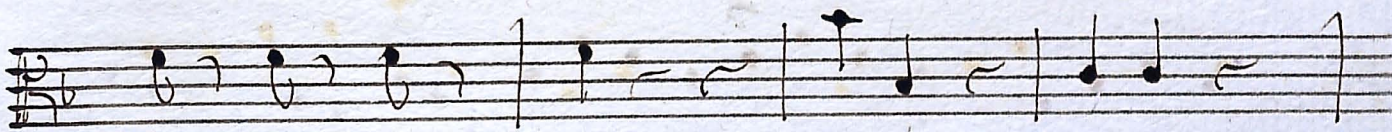
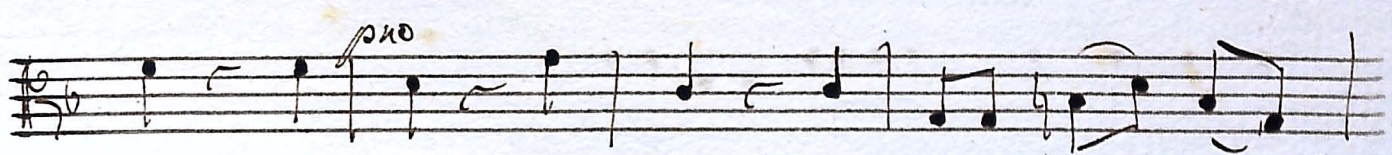
Alma redemptoris. 3. Con Stru!

Viola Prima.

Handwritten musical score for Viola Prima, measures 1-13. The score is written on ten staves. The first staff contains the tempo marking "And: con moto." and a dynamic marking "p". The key signature is one flat (B-flat). The time signature is 3/4. The music features a variety of note values, including quarter, eighth, and sixteenth notes, as well as rests. There are several slurs and phrasing marks throughout the piece. A fermata is present over the final note of measure 13. The notation is clear and legible.

*Zoltie*

*Andantino.*  $\text{G}^b$   $\frac{3}{4}$  *Virgo prius.*



*Allegretto*  $\frac{3}{4}$

*sumens illud*

*A Gany Deo.*