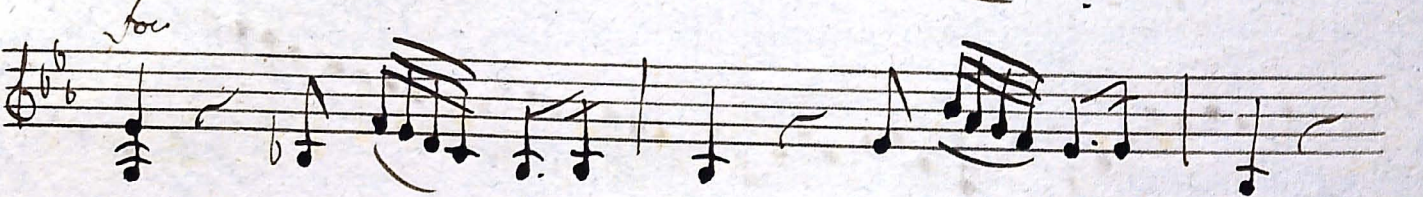


Lauda Jerusalem. n. 3. del Sig. Barbieri.

Violino Secondo Obbligato.

And. sosten.

Volta



for

Handwritten musical score for the first section, consisting of five staves of music in G major and 3/4 time. The notation includes various rhythmic values such as eighth and sixteenth notes, and rests.

Qui annunciat.

Andante

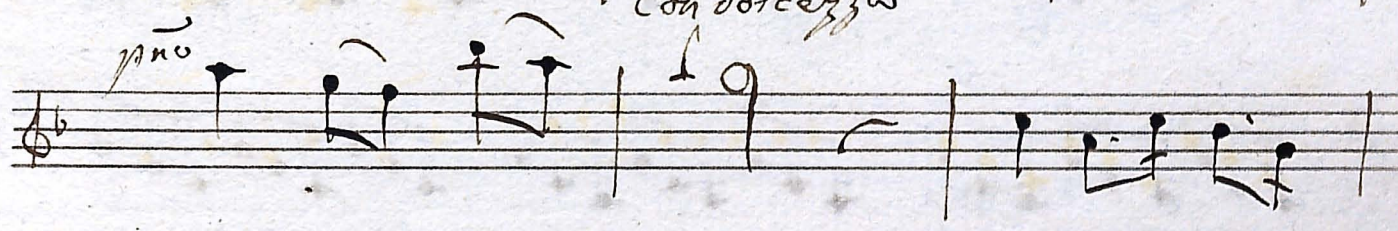
Handwritten musical score for the second section, consisting of five staves of music in G major and 3/4 time. The tempo is marked "Andante". The notation features a mix of quarter and eighth notes.

Volta

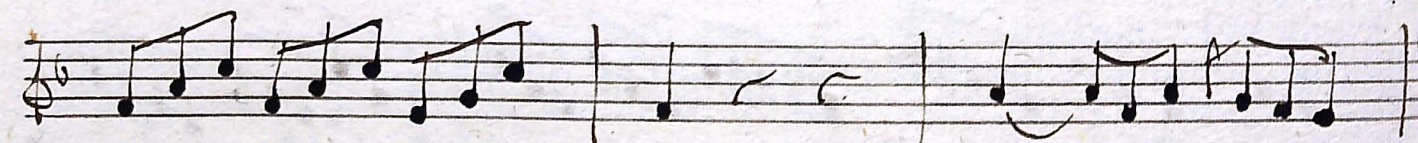
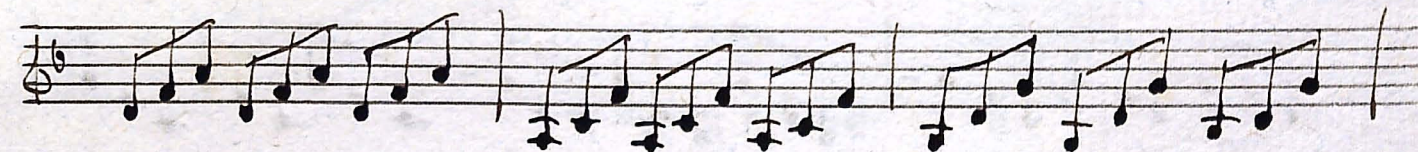
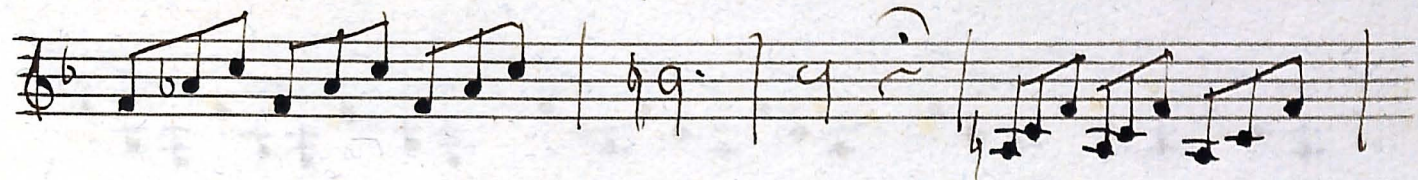
Handwritten musical notation on four staves. The first staff begins with a treble clef and a key signature of one flat (B-flat). The notes are: G4, A4, Bb4, C5, Bb4, A4, G4, F4, E4, D4, C4. The second staff contains a series of eighth and sixteenth notes, including a triplet of eighth notes. The third staff continues with eighth and sixteenth notes. The fourth staff features a melodic line with a dynamic marking 'm' above it, ending with a double bar line and a repeat sign.

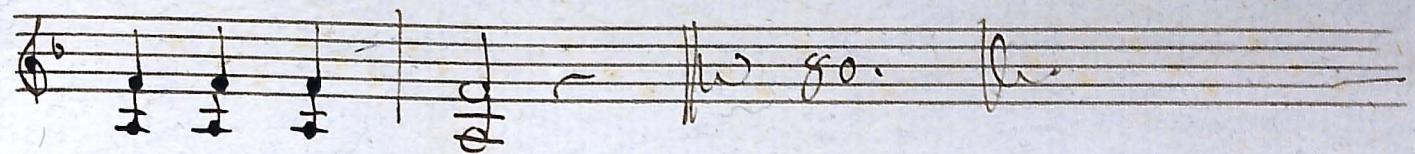
Gloria.

Handwritten musical notation for a section titled "Cantabile". The notation is written on seven staves in treble clef with a key signature of one flat (B-flat) and a 3/4 time signature. The first staff is labeled "Cantabile" and includes a 3/4 time signature and a triplet of eighth notes. The subsequent staves contain continuous melodic lines with various rhythmic patterns, including eighth and sixteenth notes. Dynamic markings include "p^{mo}" (piano) and "for" (forte) placed above the notes. The section concludes with a double bar line and a repeat sign.

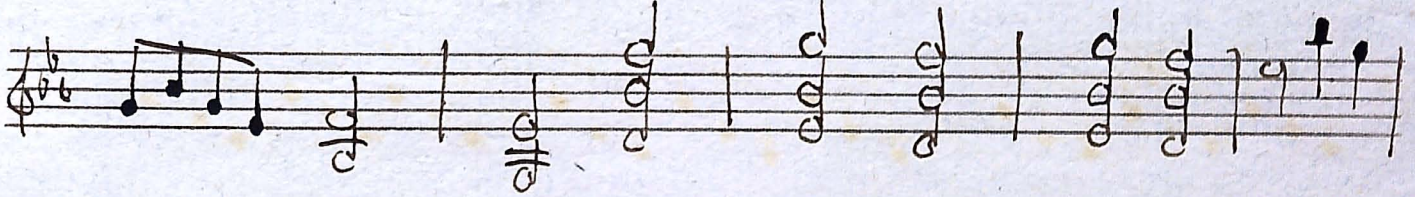
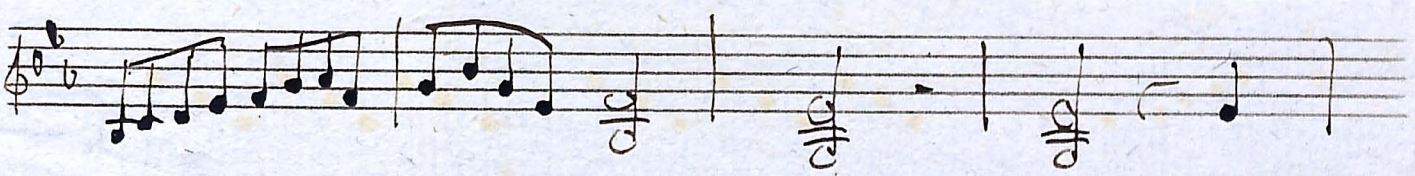
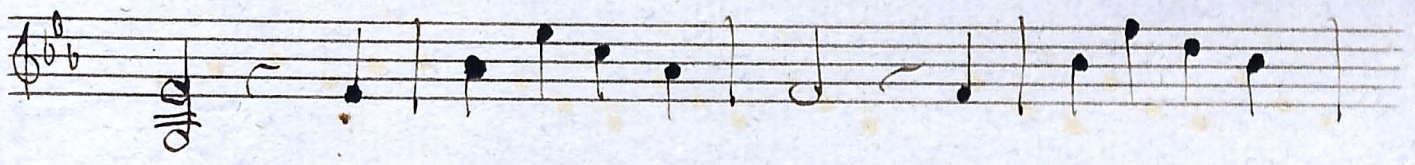
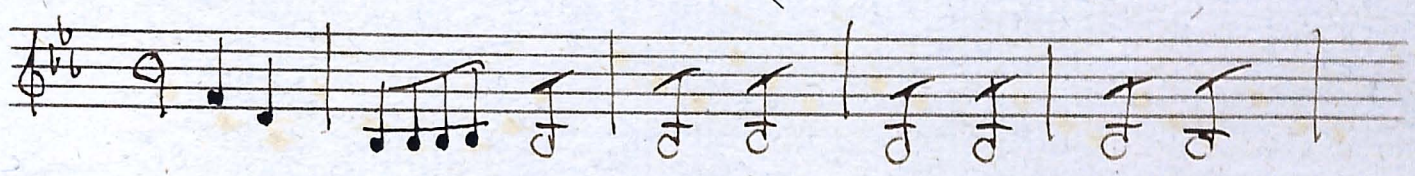
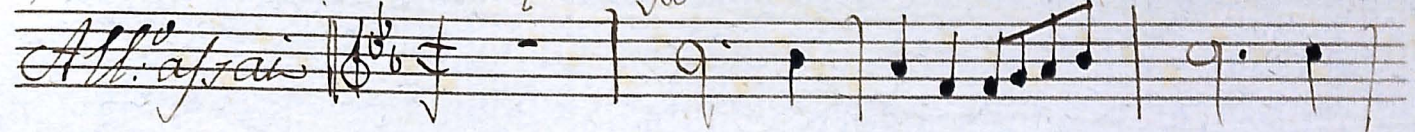


Volkis





Sicut erat.



Amen Deo