

Pieces en Trio

Pour les Flutes, Violon, & Dessus de Viole

Paris 1692

Marin Marais

1656 – 1728

Published by Johan Tufvesson.

Non-commercial copying welcome

Revision : 1.12

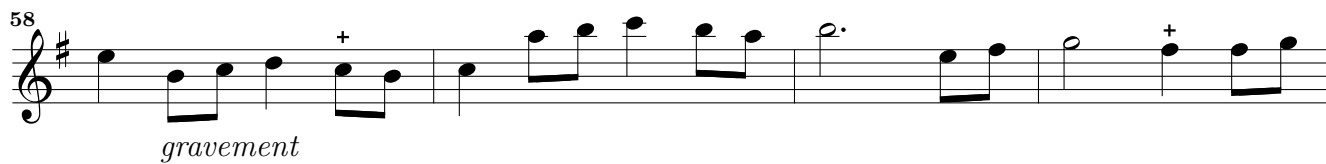
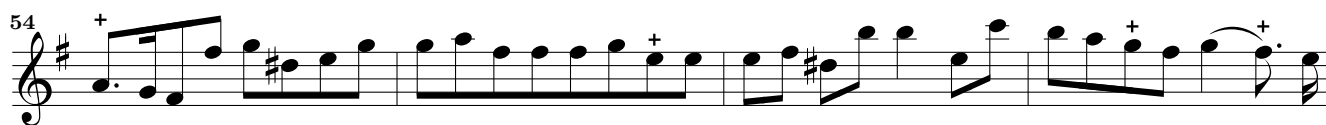
Suite V

Marin Marais (1656-1728)

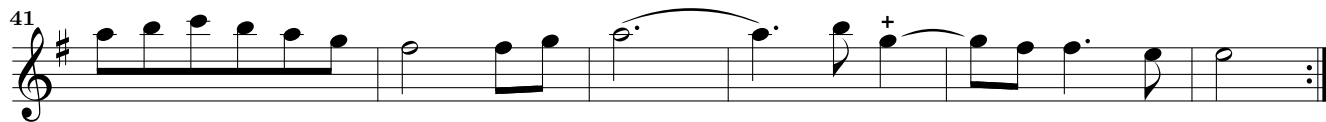
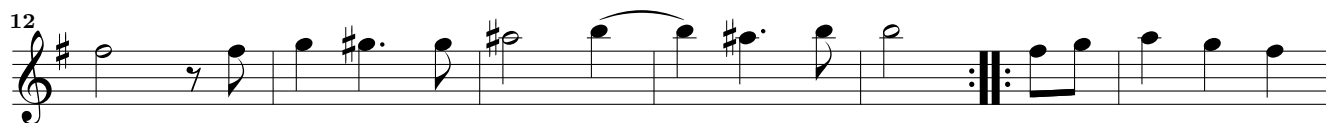
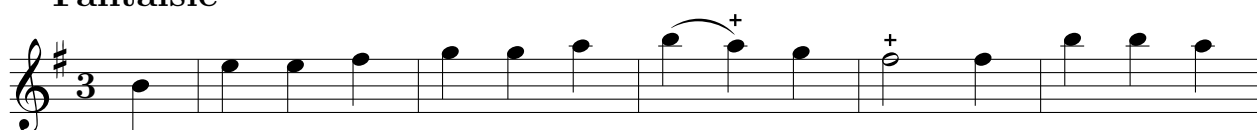
Prelude *lentement*

Musical score for the first staff of the Prelude, measures 1-50. The score is written in G major (one sharp) and common time. It begins with a treble clef and a '2' above the first measure. The tempo is marked 'lentement'. The score consists of ten staves of music, each starting with a measure number (7, 12, 17, 23, 28, 33, 37, 41, 46, 50). The music features a variety of rhythmic patterns, including eighth and sixteenth notes, and rests. There are several trills marked with a '+' sign. The piece concludes with a final cadence in the 50th measure.

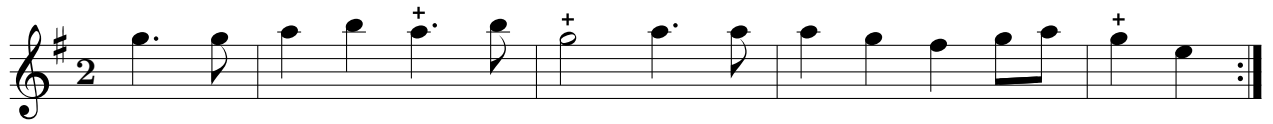
un peu plus vite



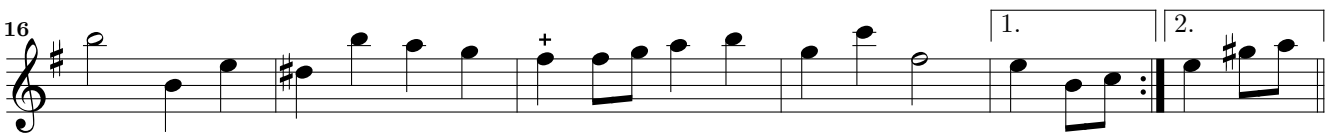
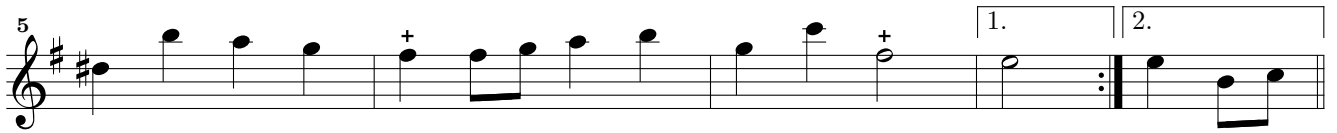
Fantaisie



Gavotte



Rondeau



Sarabande En rondeau

Musical score for Sarabande En rondeau, measures 1-35. The piece is in 3/4 time and G major. It consists of seven staves of music. Measure numbers 7, 13, 18, 24, 30, and 35 are indicated at the start of their respective staves. The score includes various musical notations such as notes, rests, slurs, and repeat signs.

Menuet

Musical score for Menuet, measures 1-12. The piece is in 3/4 time and G major. It consists of three staves of music. Measure numbers 6 and 12 are indicated at the start of their respective staves. The score includes various musical notations such as notes, rests, slurs, and repeat signs.

Sarabande

Musical score for Sarabande, measures 1-21. The piece is in G major and 3/4 time. It features a melodic line with various ornaments (marked with '+') and a repeat sign at measure 10. The score concludes with three endings (1., 2., 3.) and the instruction *p.te reprise*.

Menuet

Musical score for Menuet, measures 1-19. The piece is in G major and 3/4 time. It features a melodic line with various ornaments (marked with '+') and a repeat sign at measure 7. The score concludes with a final cadence at measure 19.

Caprice lentement

Musical score for Caprice lentement, measures 1-5. The piece is in G major and 2/4 time. It features a melodic line with various ornaments (marked with '+') and a repeat sign at measure 5.

The image displays a musical score for the first part of 'Pieces en trio – Suite V – 1er Dessus'. The score is written on a single staff in treble clef with a key signature of one sharp (F#). It consists of ten lines of music, each starting with a measure number: 9, 13, 17, 21, 27, 35, 40, 46, 51, and 56. The notation includes various rhythmic values such as quarter, eighth, and sixteenth notes, as well as rests. There are several instances of grace notes (marked with a '+') and slurs. A measure at the beginning of the fifth line (measure 27) contains a '4' above a vertical bar, indicating a four-measure rest. The score concludes with a double bar line and repeat dots at the end of the tenth line (measure 61).

Paßacaille

Musical score for Paßacaille, 1st Violin part. The score is written in treble clef, G major, and 3/4 time. It consists of ten staves of music, with measure numbers 6, 11, 16, 21, 26, 31, 36, 41, and 46 indicated at the beginning of each staff. The piece features a steady eighth-note accompaniment with various melodic lines and ornaments (marked with '+').

