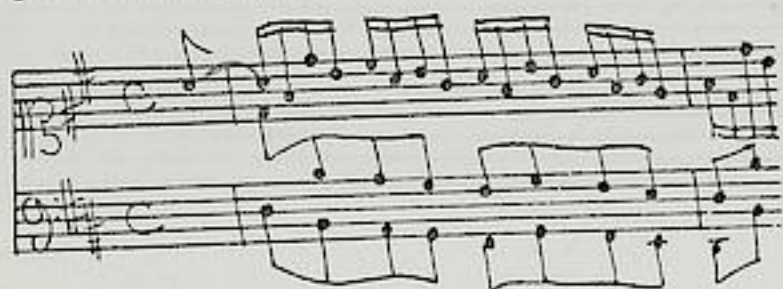


Graupner, Christoph (1683-1760)
[Suite D-dur] GWV 701

BRD DS Mus.ms 481/3



Allemande C - Courrante
3 - Rigoudon C - Sara-
bande 3 - [ohne Satzbez.]
3 - [ohne Satzbez.] 3 -
[ohne Satzbez.] C - [oh-
ne Satzbez.] C - Menuet
3 - [ohne Satzbez.] 3 -
[ohne Satzbez.] C - [oh-
ne Satzbez.] 3 - Chacon-
ne 3.
Alle D-dur.

Autograph ca. 1750-53. 17 x 21,5 cm. WZ; DS 18.
pf: 6 Bl.

Alte Sign.: N^o 67. Mus 3146.

Neindr. 1995 (L. Cerenti) -> Mus 6743 Bd 5

Allegretto

A handwritten musical score on six systems of staves. Each system consists of two staves, likely representing a treble and bass clef. The notation is dense, featuring many beamed notes, often in groups of sixteenth or thirty-second notes. There are various musical symbols including clefs, key signatures (sharps), and dynamic markings. The paper shows signs of age, with some staining and wear. The final system ends with a large, decorative flourish or scribble.

Courante

Figurata

Landesbibliothek
Darmstadt

Carabande

Handwritten musical notation on two staves. The top staff contains a melodic line with various note values and rests. The bottom staff contains a bass line with chords and single notes.

Handwritten musical notation on two staves. The top staff continues the melodic line. The bottom staff continues the bass line. A large, decorative flourish is written at the end of the top staff.

Handwritten musical notation on two staves. The top staff features a melodic line with a large slur over several notes. The bottom staff features a dense bass line with many notes.

Handwritten musical notation on two staves. The top staff has a melodic line with several 't' markings above notes. The bottom staff has a dense bass line.

Handwritten musical notation on two staves. The top staff has a melodic line with several 't' markings above notes. The bottom staff has a dense bass line.

Handwritten musical notation on two staves. The top staff has a melodic line with several 't' markings above notes. The bottom staff has a dense bass line. A large, decorative flourish is written at the end of the top staff.

Handwritten musical notation on a grand staff. The upper staff contains a melodic line with various note values and rests. The lower staff contains a bass line with chords and some melodic fragments.

Handwritten musical notation on a grand staff, continuing the piece with similar melodic and harmonic structures.

Handwritten musical notation on a grand staff, showing more complex melodic passages in the upper voice.

Handwritten musical notation on a grand staff, featuring a more active bass line with frequent chord changes.

Handwritten musical notation on a grand staff, starting with the word "Admet" written in the left margin.

Handwritten musical notation on a grand staff, concluding the page with a final melodic phrase.

Handwritten musical notation on a five-line staff, featuring a treble clef, a key signature of one sharp (F#), and a 3/4 time signature. The notation includes various note values, rests, and slurs.

Handwritten musical notation on a five-line staff, featuring a treble clef, a key signature of one sharp (F#), and a 3/4 time signature. The notation includes various note values, rests, and slurs.

Handwritten musical notation on a five-line staff, featuring a treble clef, a key signature of one sharp (F#), and a 3/4 time signature. The notation includes various note values, rests, and slurs.

Handwritten musical notation on a five-line staff, featuring a treble clef, a key signature of one sharp (F#), and a 3/4 time signature. The notation includes various note values, rests, and slurs.

Handwritten musical notation on a five-line staff, featuring a treble clef, a key signature of one sharp (F#), and a 3/4 time signature. The notation includes various note values, rests, and slurs.

This image shows a page of handwritten musical notation, page 34. It consists of six systems of music, each with a treble and bass staff. The notation is in a historical style, featuring various note values, rests, and clefs. The key signature is one sharp (F#), and the time signature is common time (C). The music is written in a cursive hand, with some ink bleed-through from the reverse side of the page. The systems contain a variety of rhythmic patterns, including eighth and sixteenth notes, and some complex figures.

Handwritten musical score on a page with six systems of staves. The notation includes treble and bass clefs, a key signature of one sharp (F#), and various rhythmic values such as eighth and sixteenth notes. The manuscript shows signs of age, including some ink bleed-through and staining. The sixth system concludes with a double bar line and a fermata-like flourish.

Madonne

Handwritten musical score for 'Madonne'. The score is written on six systems of two staves each. The notation includes treble and bass clefs, a key signature of one sharp (F#), and a 3/4 time signature. The music features a variety of note values, including eighth and sixteenth notes, and rests. There are several measures with repeat signs (double bar lines with dots) and first/second endings. The word 'Madonne' is written in a cursive hand at the beginning of the first system. The paper shows signs of age, including some staining and foxing.

Handwritten musical score on six systems of staves. Each system consists of a treble clef staff and a bass clef staff. The notation includes various note values, rests, and dynamic markings. The systems are numbered 5, 6, 7, 8, and 9 at the beginning of their respective staves. The final system ends with a large, decorative flourish.

Blank manuscript page with horizontal lines.