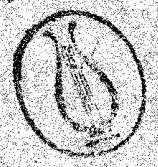


T-R

Albion

S. Cleomene

Fagotto.



Fagotto.

All.^o

Sinfonia.

Handwritten musical score for a symphony, consisting of seven staves of music. The notation includes various rhythmic values, slurs, and dynamic markings. The key signature is one sharp (F#) and the time signature is 4/4. The music is written in a cursive, handwritten style.

// *And: Tace* //

Four empty musical staves at the bottom of the page, indicating the end of the written music on this page.

All.^o

Fine dell'Introd.^{ne}

Marcia. Femina scende.

Questa Marcia si replica alla chiamata che dice. Già sale al soglio. //
nell'atto 3.^o

— Amor ch'è Cielo —

26.

// Go Tamerai //

27.

28.

// Alla Bellezza //

29.

30.

A Vagheggiar anch'io

Handwritten musical score for 'A Vagheggiar anch'io'. The score consists of four staves. The first staff is in treble clef with a 5/4 time signature. The second and third staves are in bass clef. The fourth staff is in bass clef and contains the signature 'D. Cassegni'. The music features a complex rhythmic pattern with many sixteenth notes. There are several 'G.O.' markings and a '39.' marking. The piece ends with a double bar line and the number '17'.

Esprimor di Voce

Handwritten musical score for 'Esprimor di Voce'. The score consists of four staves. The first staff is in treble clef with a 3/4 time signature. The second and third staves are in bass clef. The fourth staff is in bass clef and contains the signature 'D. Cassegni'. The music features a complex rhythmic pattern with many sixteenth notes. There are several '37. fin.' and '30.' markings. The piece ends with a double bar line and the signature 'D. Cassegni'.

— Dulce Poder mio —

And: giusto

Handwritten musical score for the first system, featuring three staves. The top staff contains a melodic line with various note values and rests. The middle staff contains a bass line with similar notation. The bottom staff begins with a treble clef, a key signature of one sharp (F#), and a common time signature (C). It contains a few notes followed by a double bar line and the initials "D.C." with a double slash indicating the end of the section.

— Quei nodi —

Handwritten musical score for the second system, featuring four staves. The notation is dense and rhythmic, consisting of many small notes, likely sixteenth or thirty-second notes. The top staff begins with the marking "ppresto." and a treble clef. The second and third staves continue the melodic and harmonic development. The bottom staff contains a treble clef, a key signature of one sharp (F#), and a common time signature (C). It includes measure numbers 23 and 26. The system concludes with a double bar line and a sharp sign (#).

Pa. Cal. Leg.

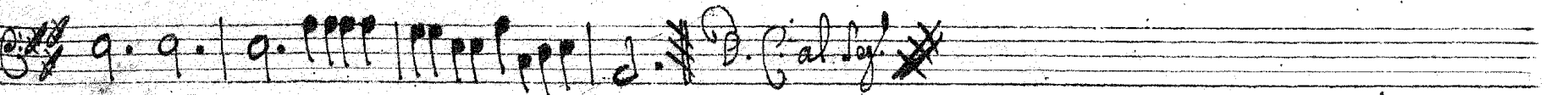
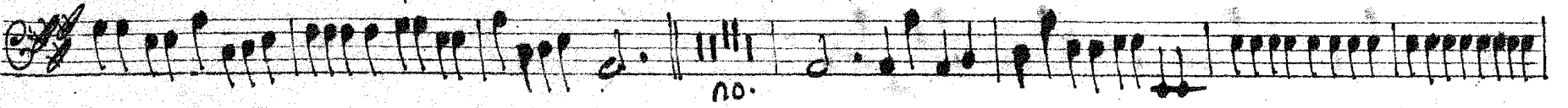
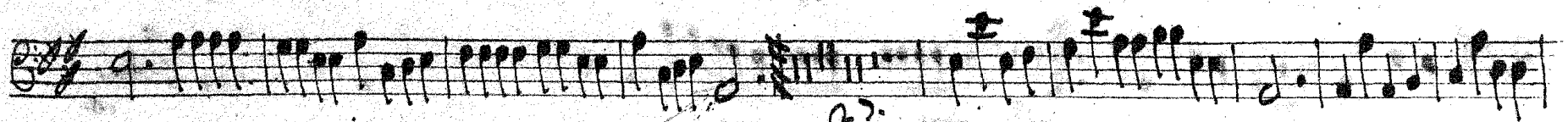
— ah non son go —

Handwritten musical score for the first section, "ah non son go". It consists of four staves. The first staff begins with a treble clef, a key signature of one flat (B-flat), and a common time signature (C). The music features a melodic line with various note values and rests, interspersed with dense chords and tremolos. Dynamic markings such as *pp*, *f*, and *pp* are present. The second and third staves continue the melodic and harmonic development. The fourth staff concludes the section with a double bar line and a fermata, followed by the instruction "D. Calleg." and a sharp sign.

// *Al suo Seemprio* //

Handwritten musical score for the second section, "Al suo Seemprio". It consists of three staves. The first staff begins with a treble clef, a key signature of one flat (B-flat), and a common time signature (C). The music is characterized by dense, rhythmic patterns, likely tremolos or sixteenth-note runs. Dynamic markings include *pp* and *f*. The second and third staves continue these patterns. The section ends with a double bar line, a fermata, and the instruction "D. Calleg." with a sharp sign.

— Falace —



~~XXXXXXXXXX~~ *— Misero Trofeo —* ~~XXXXXXXXXX~~



Da Capo fino al Seg.
E dal Seg. Sub. all' altro Seg.

~~Finis dell' altro prima~~
~~Il misero Trofeo.~~

all.
f.
2
14
15
D. fino al Seg. E dal Seg. all' altro Seg.

— Alto 2.^o —

Sul Carro legio.

Handwritten musical score for Alto 2.^o, first system. It consists of four staves. The first staff begins with a treble clef, a key signature of one flat (B-flat), and a common time signature (C). The music features a melodic line with various dynamics including 'p.' and 'f.'. The second staff has a bass clef and includes a double bar line with the number '10.' below it. The third and fourth staves continue the musical notation with various dynamics and a final double bar line with '10.' below it.

2.^o ascenda

Handwritten musical score for Alto 2.^o, second system. It consists of four staves. The first staff begins with a treble clef, a key signature of one flat (B-flat), and a 3/8 time signature. The music features a melodic line with various dynamics including 'f.' and 'p.'. The second staff has a bass clef and includes a double bar line with the number '20.' below it. The third and fourth staves continue the musical notation with various dynamics and a final double bar line with '20.' below it.

Il mio Periglio

Handwritten musical score for 'Il mio Periglio'. It consists of three staves of music. The first staff begins with a treble clef, a common time signature, and a key signature of one sharp (F#). The music is written in a style characteristic of 18th-century manuscript notation, featuring various note values, rests, and dynamic markings such as 'p' (piano) and 'f' (forte). The second and third staves continue the piece, with the third staff ending with a double bar line and a circled 'C' time signature. Measure numbers 10 and 13 are indicated below the staves.

Termina, e Solo

D. C. al Leg.

Handwritten musical score for 'Termina, e Solo'. It consists of five staves of music. The first staff begins with the tempo marking 'all. assai' and a treble clef. The music is written in a style characteristic of 18th-century manuscript notation, featuring various note values, rests, and dynamic markings such as 'f' (forte) and 'p' (piano). The second and third staves continue the piece, with the third staff ending with a double bar line and a circled 'C' time signature. The fourth and fifth staves continue the piece, with the fifth staff ending with a double bar line and a circled 'C' time signature. Measure numbers 16 and 18 are indicated below the staves. The tempo marking 'D. C. al Leg.' is written at the bottom of the fifth staff.

In Do no

And-Spirito

Handwritten musical score for 'In Do no'. It consists of three staves. The first staff is in treble clef with a key signature of one sharp (F#) and a common time signature (C). The second and third staves are in bass clef with the same key signature and time signature. The music features dense, rhythmic patterns with many sixteenth and thirty-second notes. There are dynamic markings such as 'f' and 'p'. The piece concludes with a double bar line and a fermata, followed by a final cadence in C major.

Puero armonico

Allegretto

Handwritten musical score for 'Puero armonico'. It consists of three staves. The first staff is in treble clef with a key signature of one sharp (F#) and a 3/8 time signature. The second and third staves are in bass clef with the same key signature and time signature. The music is characterized by a steady eighth-note accompaniment in the lower staves and a more melodic line in the upper staff. There are dynamic markings like 'f' and 'p'. The piece ends with a double bar line and a fermata.

*Da Capo Simol Seg. $\text{F}\sharp$ & dal Seg. Sub.
all' abro $\text{F}\sharp$*

La Dubbia Sortes

all. assai $\text{C} \frac{3}{8}$

26.
23.
24.
al leg.

All. $\text{C} \frac{3}{8}$

Figlio

25.
26.
28.

allegro

Fine dell'atto 2.^o

Corona *Atto Terzo*

all.^o

8. *pp.* *f.* *pp.* *f.* *pp.* *f.*

17. *for.* *pp.* *f.* *pp.* *f.* *pp.* *f.*

31. *f.* *pp.* *f.* *pp.* *f.* *pp.* *f.*

15. *Da Capo*

And.^{te}

Tutto ardo.

Handwritten musical score for the first section, consisting of four staves. The notation includes various rhythmic values, slurs, and dynamic markings such as 'f.' and 'F.'

Terzina, e Spira

Handwritten musical score for the second section, consisting of four staves. The notation is dense with many sixteenth notes and includes dynamic markings like 'p.', 'f.', and 'ff.'

Da Capo al Seg.^{no} #

— Sereno e Peis —

Handwritten musical score for five staves. The notation includes various rhythmic values, slurs, and dynamic markings such as *f.* and *p.*. The staves are densely packed with notes and rests, indicating a complex and rhythmic piece.

Handwritten musical score for three staves. The first staff begins with the instruction "Tutti" and contains a series of rhythmic patterns. The second and third staves continue the musical notation. A "Da Capo" marking is visible on the second staff, indicating a repeat. The notation includes various rhythmic values and slurs.

Si Volta al Chiamato Tranquilla Calma

Lo strepito de barbari stromenti

No.

Handwritten musical score for 'Lo strepito de barbari stromenti'. The score is written on six staves. The first staff begins with a treble clef, a key signature of one sharp (F#), and a 3/4 time signature. It contains a series of rhythmic patterns, including a section that is heavily scribbled out. The second staff is labeled 'Amici adio' and includes a '2a' marking. The third staff is heavily scribbled out. The fourth staff is labeled 'Con' and includes a '2a' marking. The fifth and sixth staves continue the musical notation with various rhythmic figures and rests.

Puffs

Tranquilla Calma

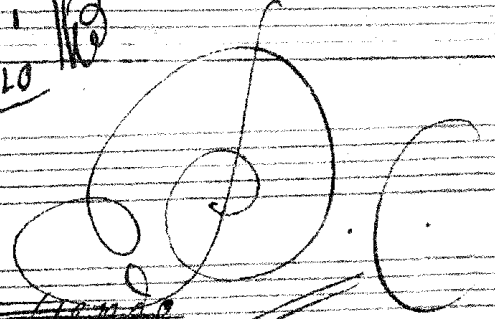
Handwritten musical score for 'Tranquilla Calma'. The score consists of five staves. The first staff begins with a treble clef, a key signature of one flat (B-flat), and a 3/8 time signature. The music is written in a simple, rhythmic style with many eighth notes. The second staff contains a measure with a double bar line and the number '28' written below it. The third staff has a measure with a double bar line and the number '35' written below it. The fourth staff ends with a double bar line and a fermata. The fifth staff begins with a treble clef, a key signature of one flat, and a 3/8 time signature, and ends with a double bar line and a fermata.

Larghetto 10

Già sale al soglio.

~~La Marcia del Re.~~

~~Femina fende.~~



Handwritten musical score for 'Già sale al soglio'. The score consists of three staves. The first staff begins with a treble clef, a key signature of one flat, and a 4/4 time signature. The music is written in a simple, rhythmic style with many eighth notes. The second staff continues the melody. The third staff begins with a treble clef, a key signature of one flat, and a 4/4 time signature, and ends with a double bar line and a fermata.