

HORTULUS CHELICUS

Violino Solo

Mainz 1688

Johann Jakob Walther
c. 1650 – 1717

Published by Johan Tufvesson.

Non-commercial copying welcome

Revision : 1.9

XIII. Aria

Johann Jacob Walther
(ca.1650-1717)

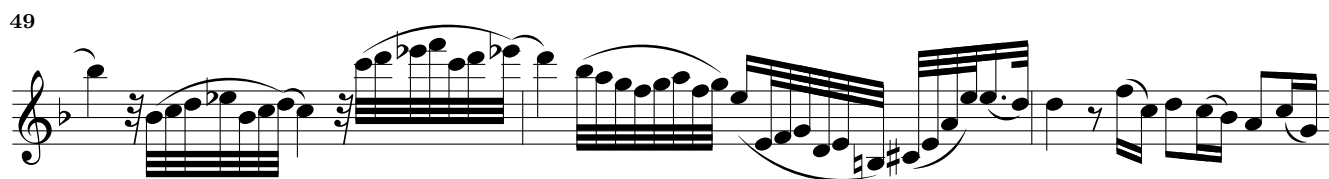
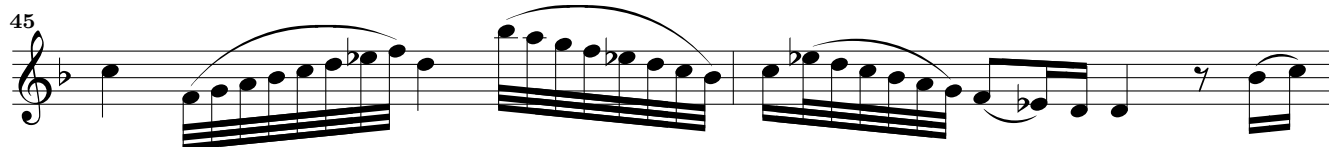
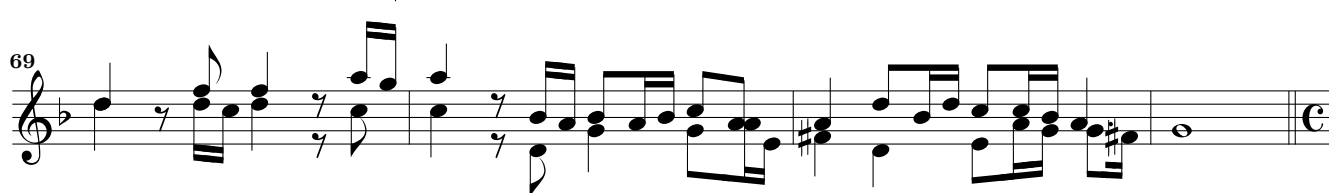
The first part of the score consists of six staves of music in G minor, common time. It begins with a treble clef and a key signature of one flat. The melody is characterized by eighth and sixteenth notes, often beamed together. There are several trills and grace notes throughout. The piece concludes with a whole note chord on the final measure.

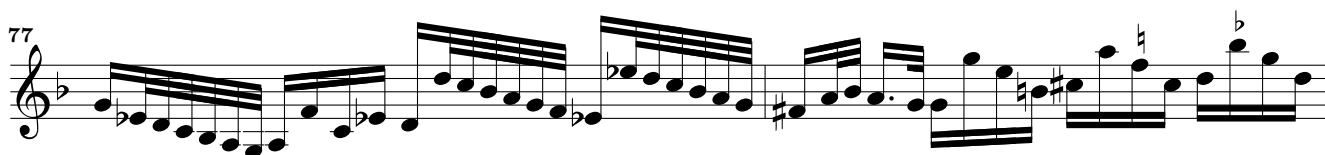
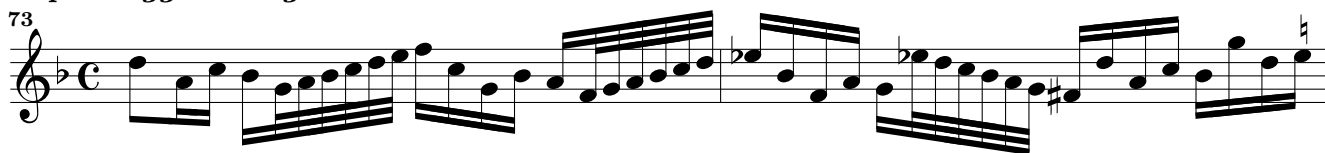
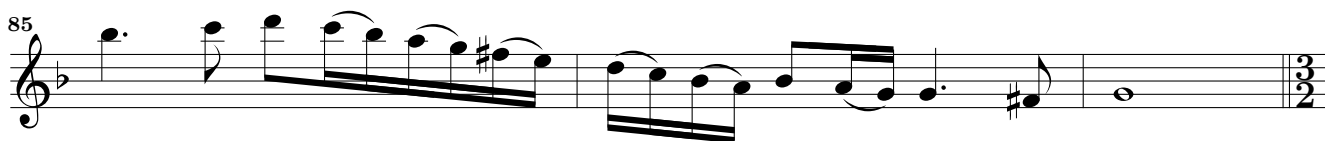
Var.

The first variation consists of eight staves of music. It features a more complex harmonic texture with frequent chords and some sixteenth-note passages. The tempo remains common time. The variation ends with a whole note chord.

Var.

The second variation consists of two staves of music. It begins with a *presto.* tempo marking. The first staff contains measures 37-39, featuring a series of triplets. The second staff contains measures 40-43, marked *adag.* and also featuring triplets. The piece concludes with a whole note chord.

*Variat.*

passaggio allegro.*Adagio**Aria Lento*