

Mus. Pfr

20
169

Tromb: Alto Rip.
Vesperæ Long. et Breuiores
Cum Lytan: Lauret:
d' 4 Voc: 2 W, 2 Viol. 4 Rip:
con alijs Strum ad libitū.

PP in Bibern

Mus. Fr. 169.

E choro S. Michaelis.

2⁹⁰

Bibern

Alto Trombon.

D *ixit*

700.
Dominus.

29.
Gloria.

52.
Confitebor.

Memorens.
35.

Matthias Tentor.

Handwritten musical notation on a five-line staff, featuring a treble clef, a key signature of one sharp (F#), and a common time signature (C). The notation consists of a sequence of notes and rests, ending with a double bar line and a fermata.

Handwritten musical notation on a five-line staff, featuring a treble clef, a key signature of one sharp (F#), and a common time signature (C). The notation includes a triplet of notes marked with a '3' above them, followed by a double bar line and a fermata.

Gloria.

Handwritten musical notation on a five-line staff, featuring a treble clef, a key signature of one sharp (F#), and a common time signature (C). The notation consists of a sequence of notes and rests, ending with a double bar line and a fermata.

Handwritten musical notation on a five-line staff, featuring a treble clef, a key signature of one sharp (F#), and a common time signature (C). The notation includes a fermata over the final note, with the word 'Allene' written below it.

B *eatu vir.* *Jucundus.* Handwritten musical notation on a five-line staff, featuring a treble clef, a key signature of one sharp (F#), and a common time signature (C). The notation includes a 3/4 time signature and a sequence of notes and rests, ending with a double bar line and a fermata.

Handwritten musical notation on a five-line staff, featuring a treble clef, a key signature of one sharp (F#), and a common time signature (C). The notation consists of a sequence of notes and rests, ending with a double bar line and a fermata.

Handwritten musical notation on a five-line staff, featuring a treble clef, a key signature of one sharp (F#), and a common time signature (C). The notation includes a 5/2 time signature and a sequence of notes and rests, ending with a double bar line and a fermata. The word 'Gloria' is written below the staff.

Handwritten musical notation on a five-line staff, featuring a treble clef, a key signature of one sharp (F#), and a common time signature (C). The notation consists of a sequence of notes and rests, ending with a double bar line and a fermata.

Handwritten musical notation on a five-line staff, featuring a treble clef, a key signature of one sharp (F#), and a common time signature (C). The notation consists of a sequence of notes and rests, ending with a double bar line and a fermata.

Handwritten musical notation on a five-line staff, featuring a treble clef, a key signature of one sharp (F#), and a common time signature (C). The notation includes a fermata over the final note, with the word 'Allene' written below it.

L *C* $\frac{3}{4}$

audate pueri.

Suscitans.

Amen.

L *C* $\frac{3}{4}$

audate Dominum.

adagio.

And.te.
Musical notation on a five-line staff with a treble clef and a key signature of two sharps (F# and C#). The notes are mostly quarter and eighth notes.

Gloria.
Musical notation on a five-line staff with a treble clef and a key signature of two sharps. The notation includes various note values and rests.

amen.
Musical notation on a five-line staff with a treble clef and a key signature of two sharps. The notation ends with a double bar line and a fermata.

Magnificat.
M Musical notation on a five-line staff with a treble clef and a key signature of two sharps. The word "Magnificat" is written in large letters. The notation includes a triplet of eighth notes marked "32." and a fermata.

Musical notation on a five-line staff with a treble clef and a key signature of two sharps. The notation continues the melodic line with various note values.

Sicut locutus.
Musical notation on a five-line staff with a treble clef and a key signature of two sharps. The word "Sicut locutus" is written below the staff. The notation includes a triplet of eighth notes marked "25." and a fermata.

Sicut.
Musical notation on a five-line staff with a treble clef and a key signature of two sharps. The word "Sicut" is written below the staff. The notation includes a fermata.

And.te.
Musical notation on a five-line staff with a treble clef and a key signature of two sharps. The word "And.te." is written above the staff. The notation includes a fermata.

Musical notation on a five-line staff with a treble clef and a key signature of two sharps. The notation continues the melodic line.

Musical notation on a five-line staff with a treble clef and a key signature of two sharps. The notation ends with a double bar line and a fermata.

D *ixi*

Gloria.

L ^{25.} *audate pueri.*

Gloria.

Handwritten musical notation on a single staff, featuring a treble clef, a key signature of one flat (B-flat), and a common time signature (C). The notation includes various note values and rests, ending with a double bar line and a fermata.

L *resto.*
Handwritten musical notation on a single staff, starting with a large initial letter 'L'. It includes a treble clef, a key signature of one flat, and a 3/4 time signature. The notation continues with notes and rests, ending with a double bar line and a fermata. The word *etatus.* is written below the staff.

Handwritten musical notation on a single staff, featuring a treble clef, a key signature of one flat, and a common time signature. The notation includes various note values and rests, ending with a double bar line and a fermata.

Handwritten musical notation on a single staff, featuring a treble clef, a key signature of one flat, and a common time signature. The notation includes various note values and rests, ending with a double bar line and a fermata. The word *Fiat pax* is written below the staff.

Handwritten musical notation on a single staff, featuring a treble clef, a key signature of one flat, and a 3/4 time signature. The notation includes various note values and rests, ending with a double bar line and a fermata. The word *Sicut* is written below the staff.

Handwritten musical notation on a single staff, featuring a treble clef, a key signature of one flat, and a common time signature. The notation includes various note values and rests, ending with a double bar line and a fermata.

Handwritten musical notation on a single staff, featuring a treble clef, a key signature of one flat, and a common time signature. The notation includes various note values and rests, ending with a double bar line and a fermata.

Handwritten musical notation on a single staff, featuring a treble clef, a key signature of one flat, and a common time signature. The notation includes various note values and rests, ending with a double bar line and a fermata.

Handwritten musical notation on a single staff, featuring a treble clef, a key signature of one flat, and a common time signature. The notation includes various note values and rests, ending with a double bar line and a fermata.

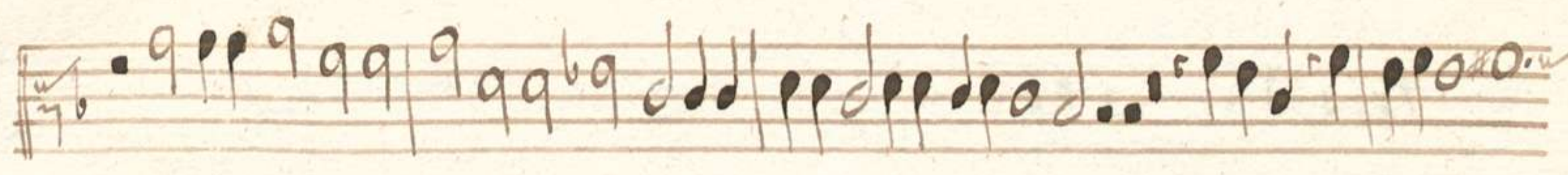
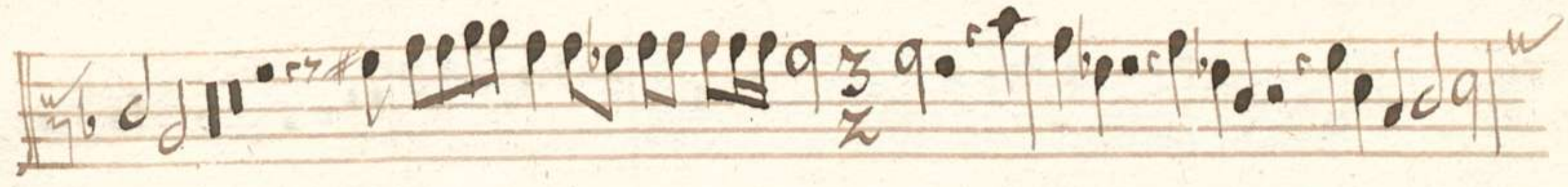
N *isi Dominus.*
Handwritten musical notation on a single staff, starting with a large initial letter 'N'. It includes a treble clef, a key signature of one flat, and a common time signature. The notation continues with notes and rests, ending with a double bar line and a fermata.



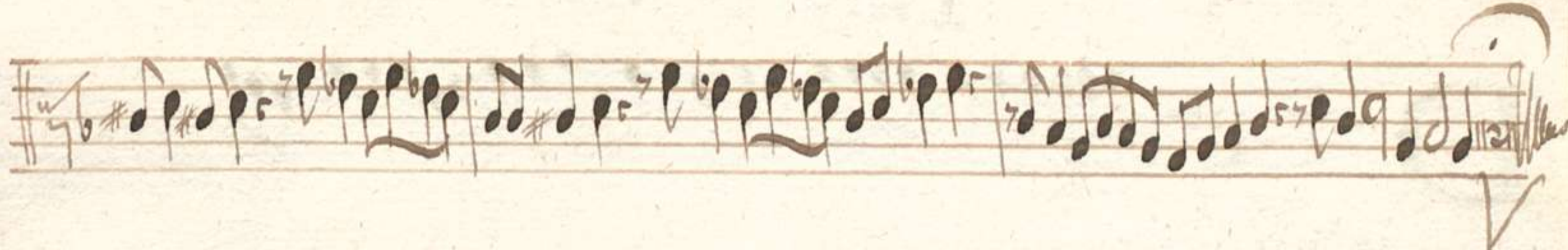
Sicut erat.



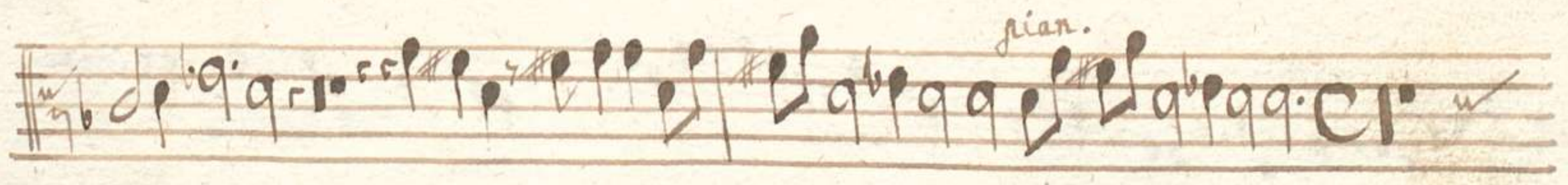
anda Jerusalem. Qui dat nivem.



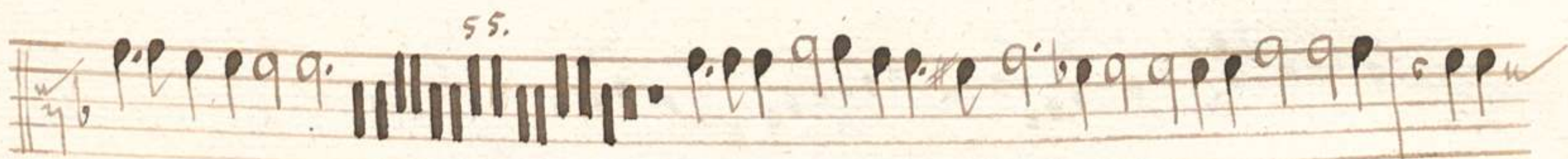
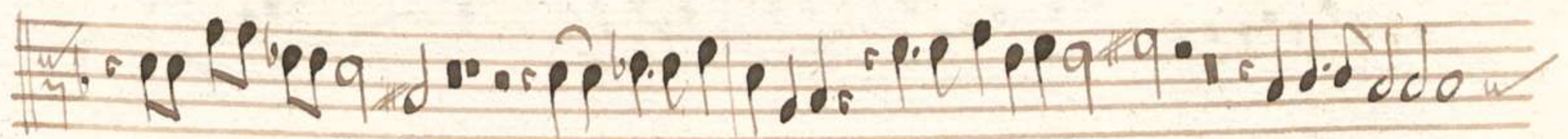
Amen.



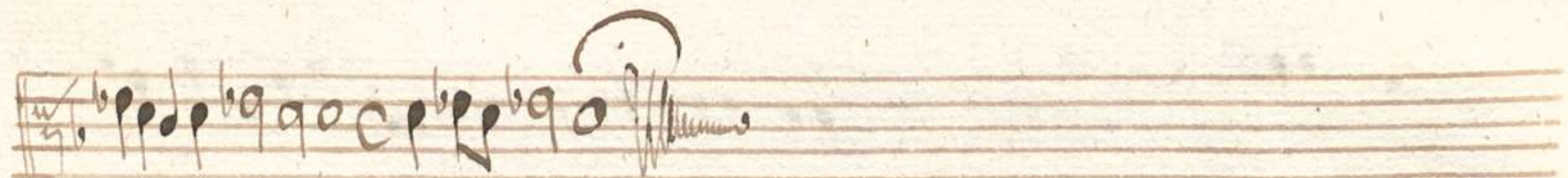
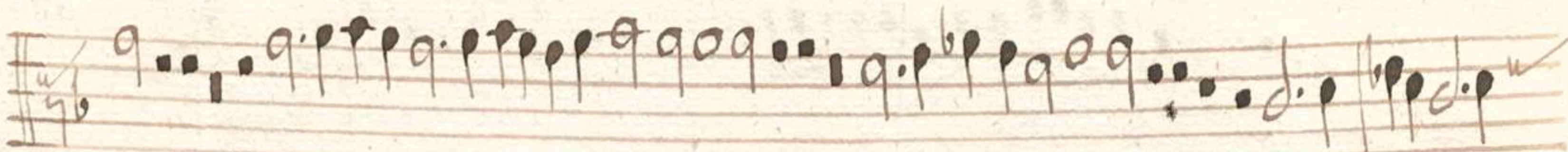
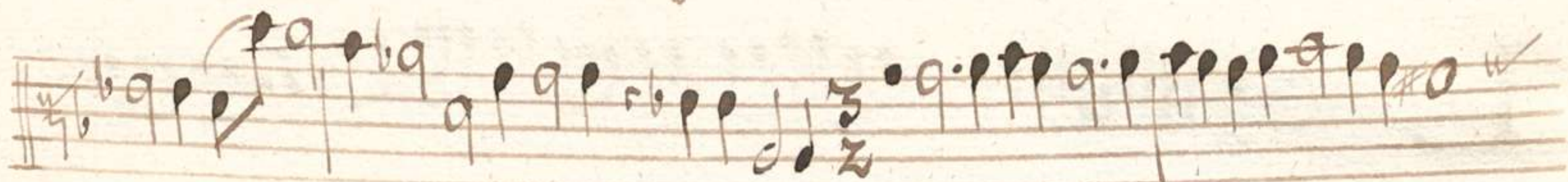
agnificat



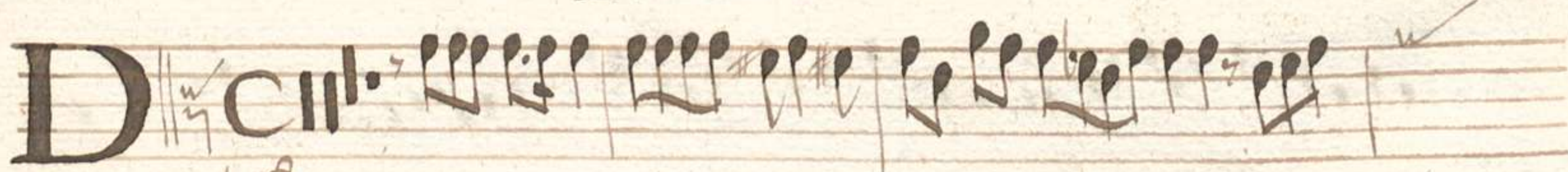
rian.



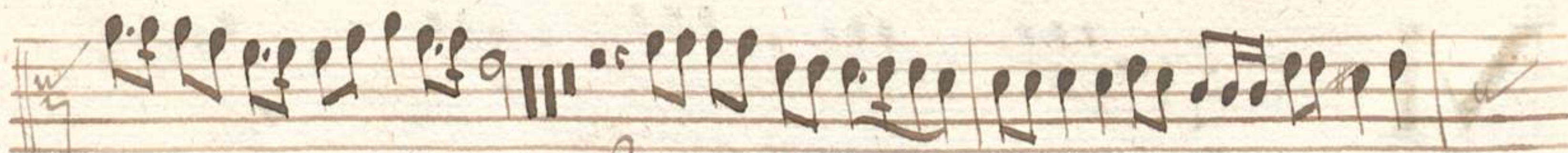
Gloria.



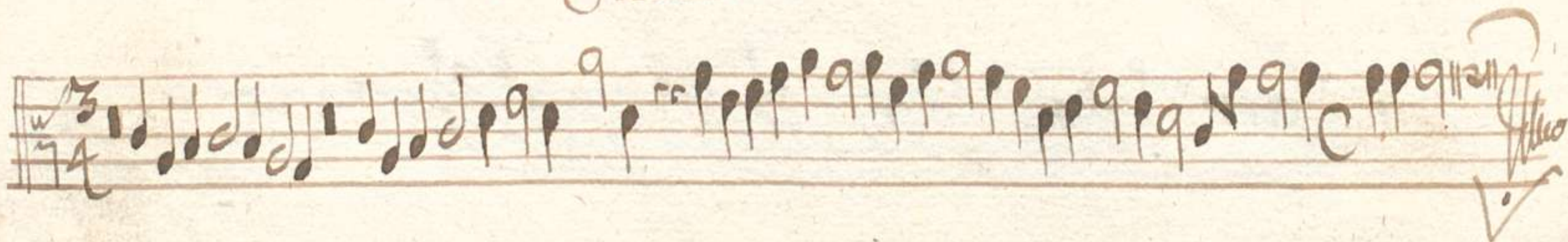
Psalmi breviores



ixit Dominus.



Sicut erat.



C *ongitebor.*

si.
C *Redemptionem.*

ian.
amen.

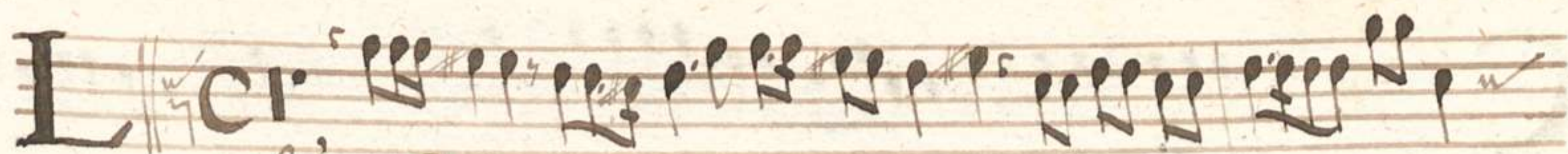
B *atus vir.*

Peccator.

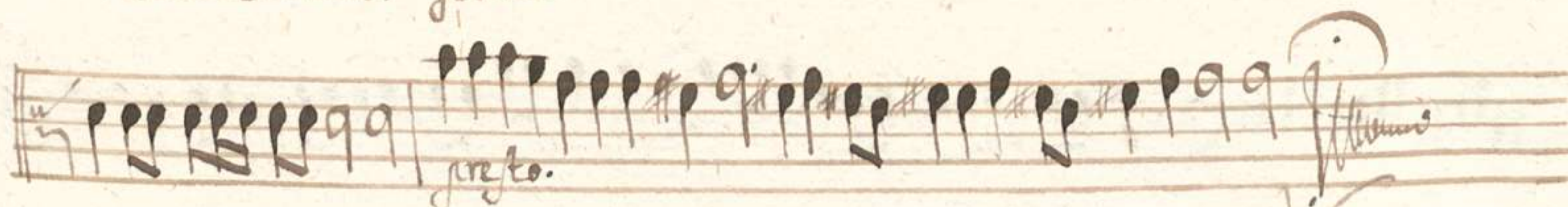
Amen.

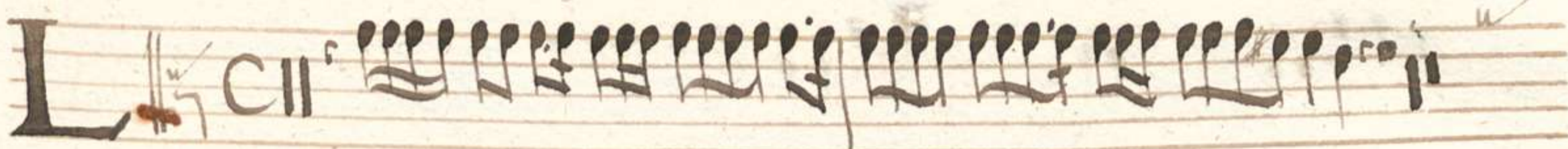
L *audate pueri.*

amen.

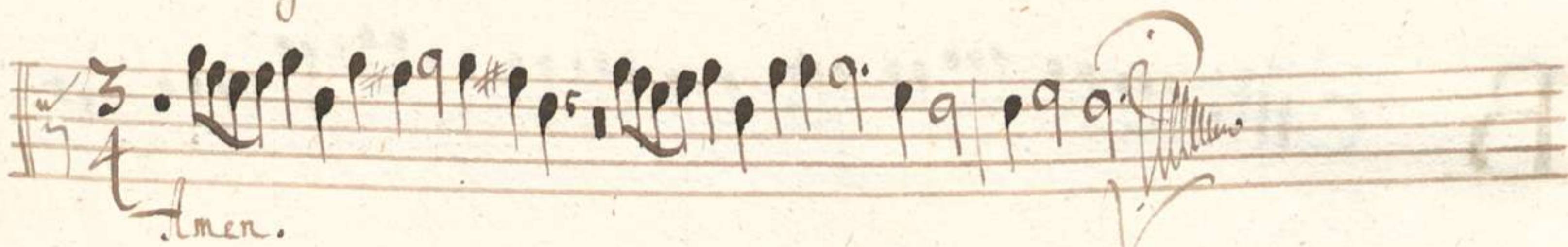
L *Cr* 

audate Dominum, Gloria.



L *CII* 

audate pueri.



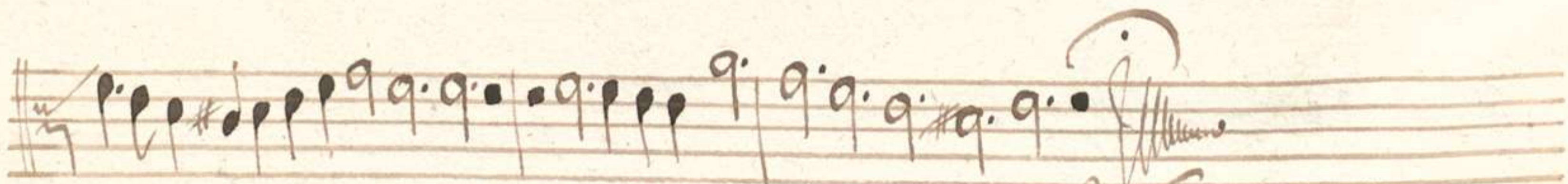
Amen.

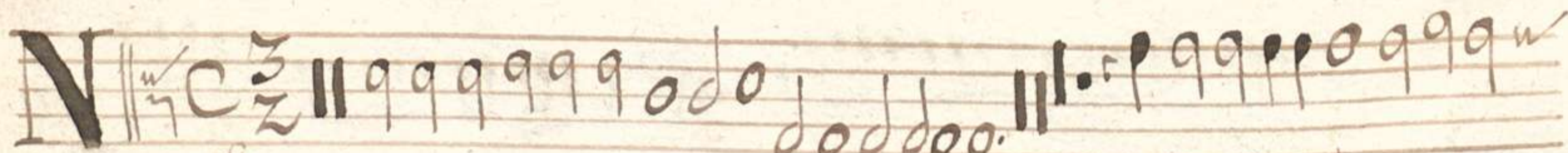
L *CIII* 

etatus sum.

Amen.





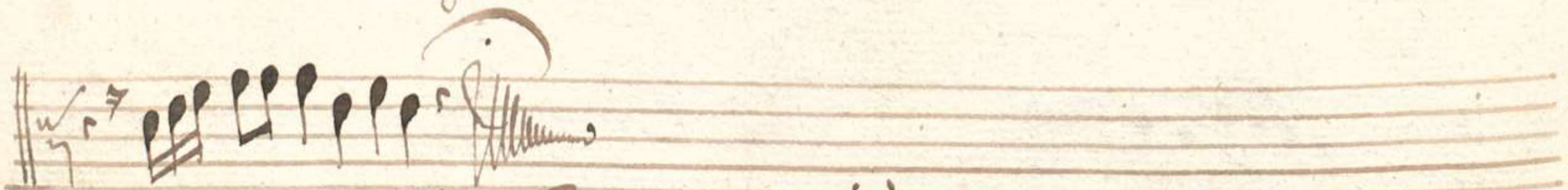
N *CIII* 

isi Dominus.

Non confundetur



Et in secula.



L *auda Jerusalem.*

et in saecula.

z. d.

M *agnificat.* *Fecit.*

Sicut erat.

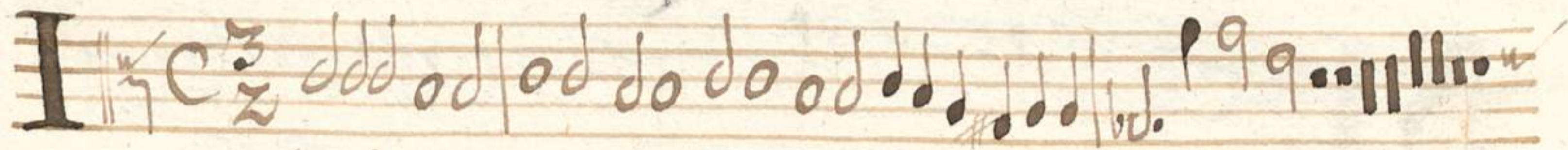
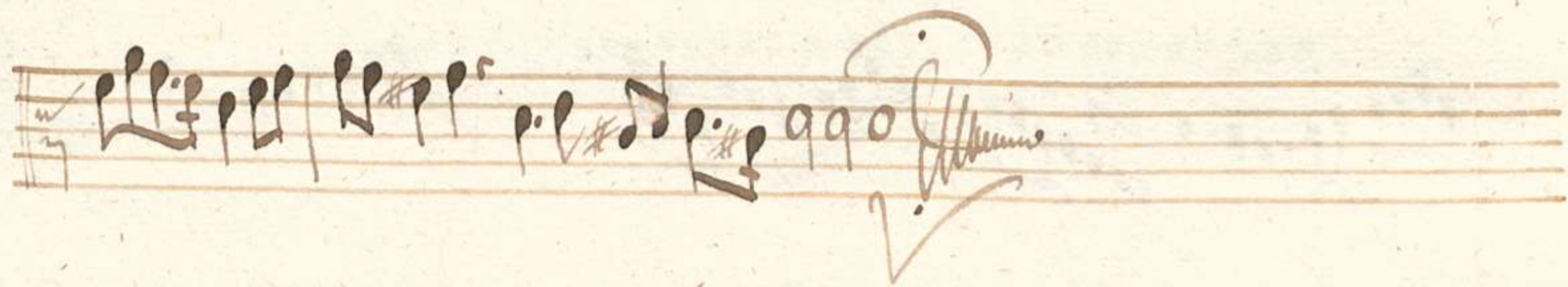
Psalmi per annum necessarii.

C *redidi.*

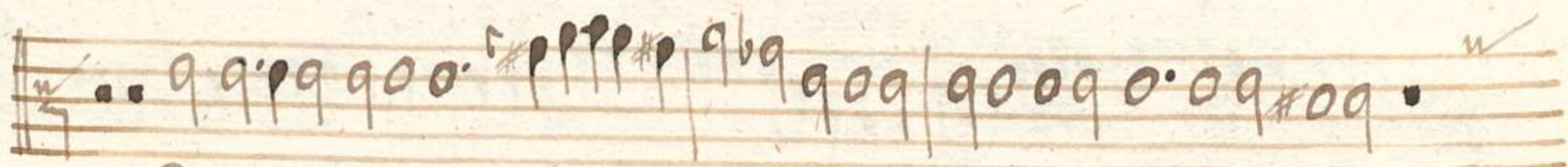


O Domine

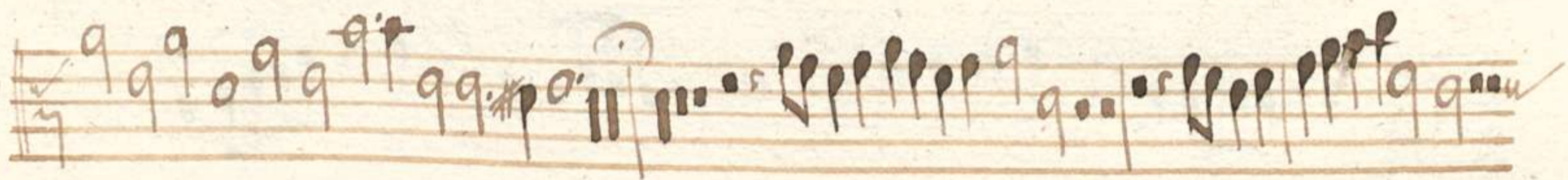
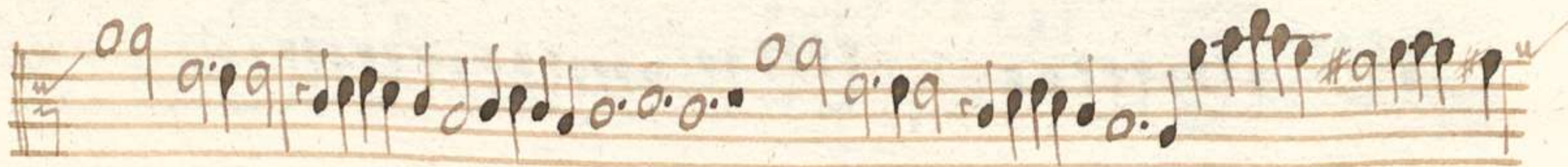
Amen.



n convertendo.



Qui seminans



omine probasti.



Et in secula.

D ^{37.} *et profundis.* *A custodia.*


Amen.


M *emento Domine.*

Et in secula.

B 

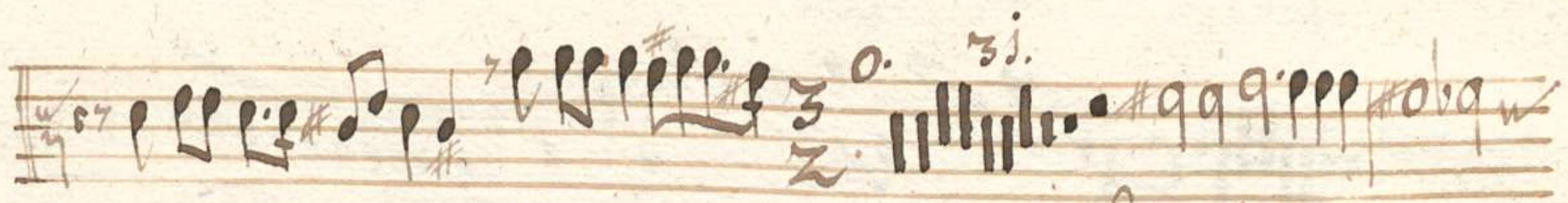
cati omnes.



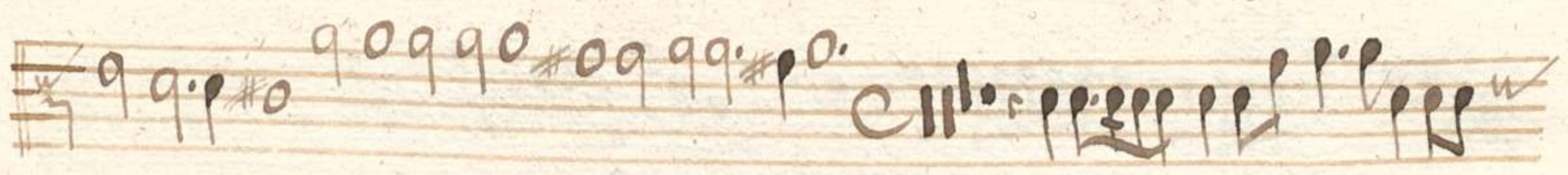
I 

n exitu.



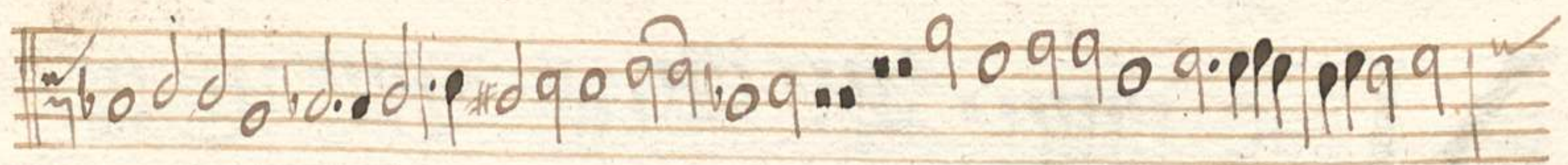


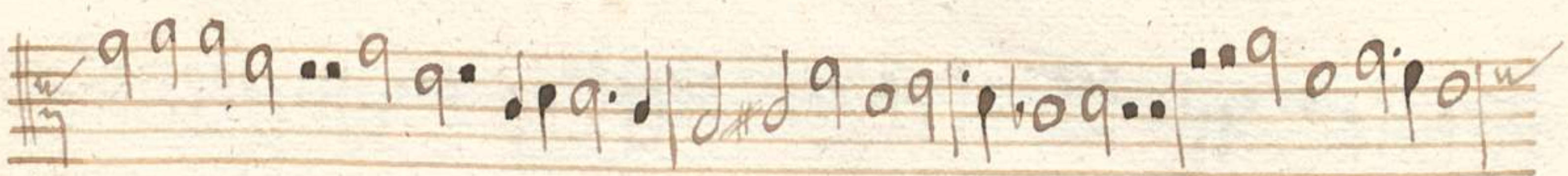
Domus Israël.





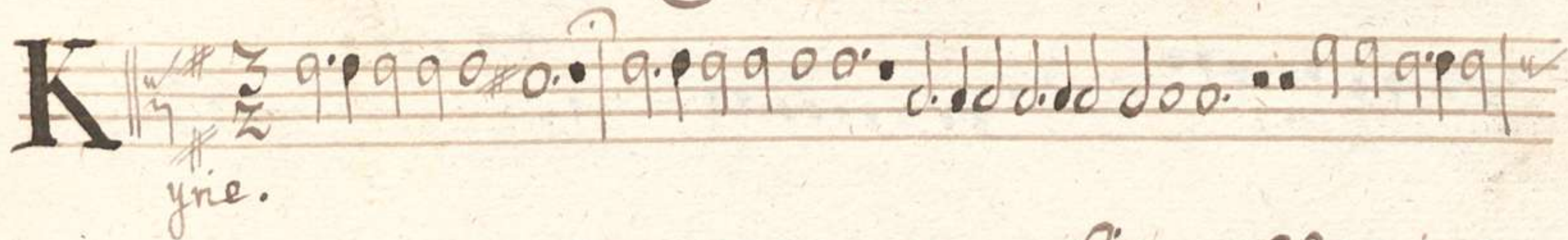
Amen.

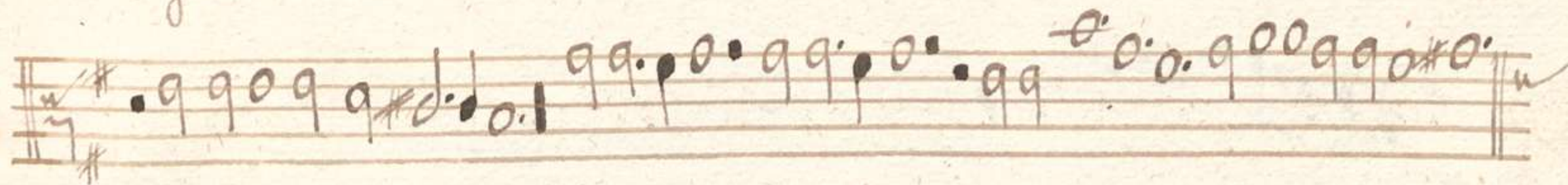


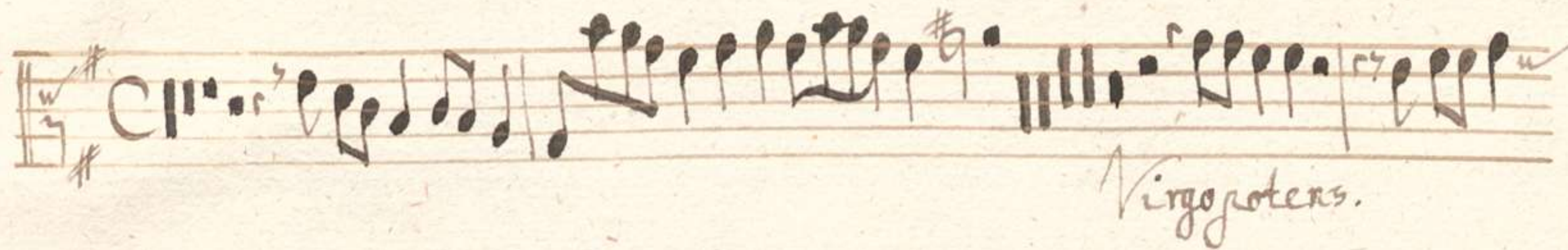




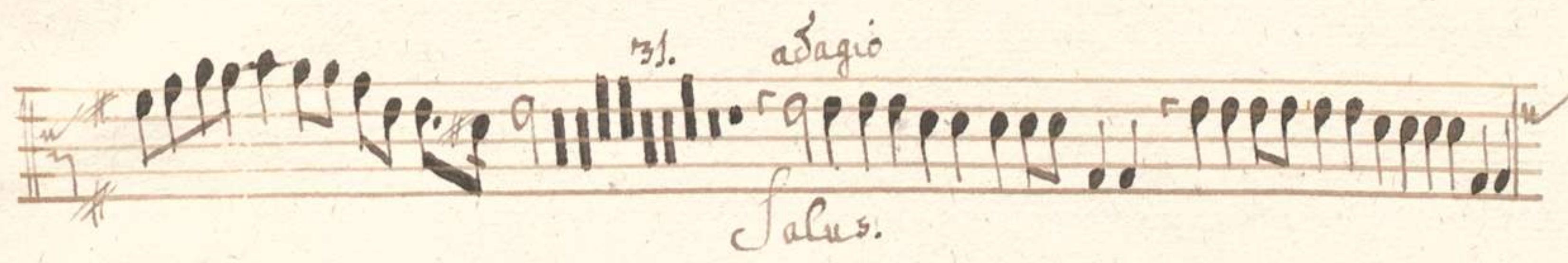
Litania Lauretana.

K  *grie.*



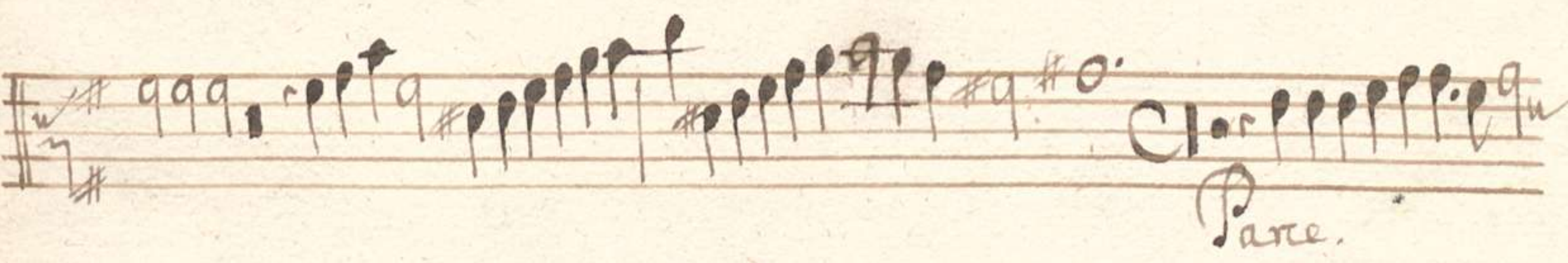
 *Virgo potens.*



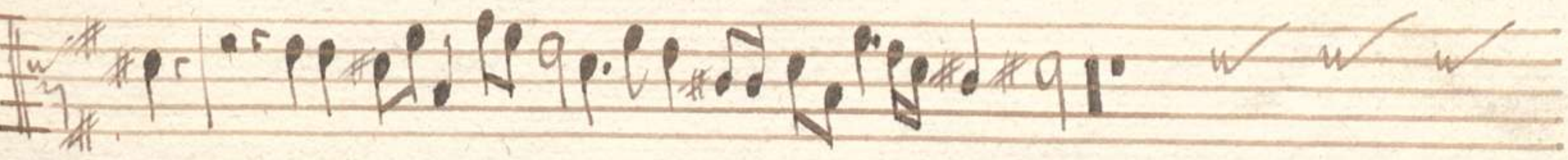
 *adagio*
Salus.





 *Pace.*





Handwritten musical notation on a five-line staff, featuring a treble clef, a key signature of one sharp (F#), and a 3/4 time signature. The notation includes various note values, rests, and a double bar line at the end.

Handwritten musical notation on a five-line staff, continuing from the first staff. It includes a treble clef, a key signature of one sharp, and a 3/4 time signature. The notation features a double bar line and a large, decorative flourish or signature at the end.

Multiple empty musical staves on the page, showing faint ghosting of the notation from the first two staves. The staves are arranged vertically down the page.

