

PRELUDE in C

(British Museum Add. Ms. 22099)

for Trumpet & Organ

Score (00':47'')

John Blow (1649 - 1708)

Arr. Michel Rondeau

Maestoso $\text{♩} = 90$

Trumpet in C

Organ

This system contains the first five measures of the score. The Trumpet in C part is written in a single staff with a treble clef and a common time signature. It begins with a rest for one measure, followed by eighth-note patterns. The Organ part is written in two staves (treble and bass clefs) with a common time signature. It features a steady eighth-note accompaniment in the bass and chordal textures in the treble.

C Tpt.

Org.

This system contains measures 6 through 10. The C Trumpet part continues with eighth-note patterns and rests. The Organ part maintains its accompaniment while adding more complex chordal structures in the treble.

C Tpt.

Org.

This system contains measures 11 through 13. The C Trumpet part features a more active eighth-note line. The Organ part continues with its characteristic accompaniment and chordal support.

C Tpt.

Org.

This system contains the final four measures (14-17) of the score. The C Trumpet part concludes with a series of eighth notes and a final sustained note. The Organ part provides a final accompaniment and chordal texture, ending with a fermata on the final chord.

PRELUDE in C

(British Museum Add. Ms. 22099)

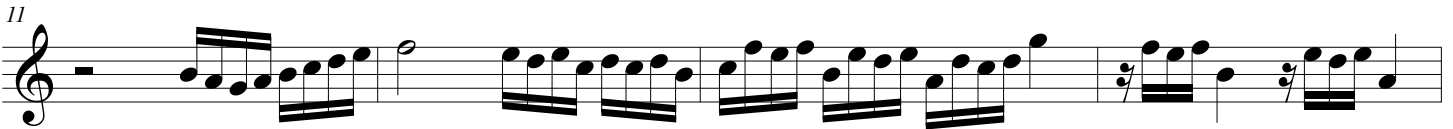
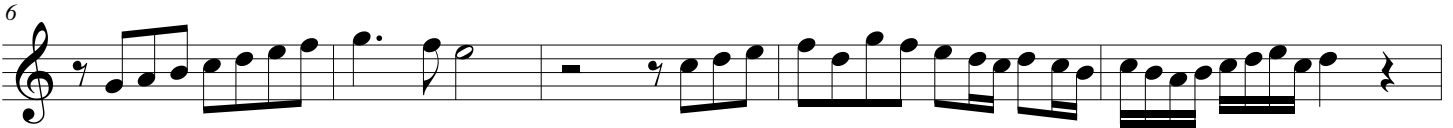
for Trumpet & Organ

C Trumpet

John Blow (1649 - 1708)

Arr. Michel Rondeau

Maestoso $\text{♩} = 90$



PRELUDE in C

(British Museum Add. Ms. 22099)

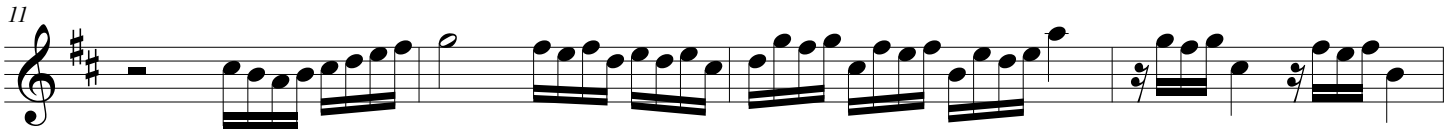
for Trumpet & Organ

Bb Trumpet

John Blow (1649 - 1708)

Arr. Michel Rondeau

Maestoso ♩ = 90



PRELUDE in C

(British Museum Add. Ms. 22099)

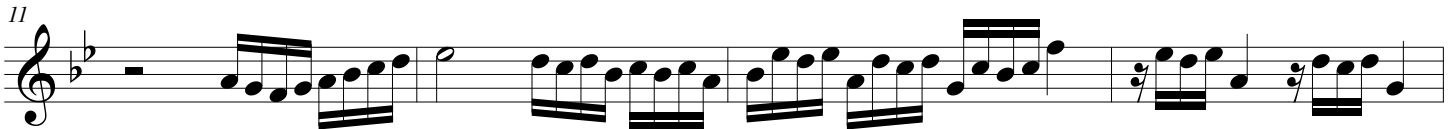
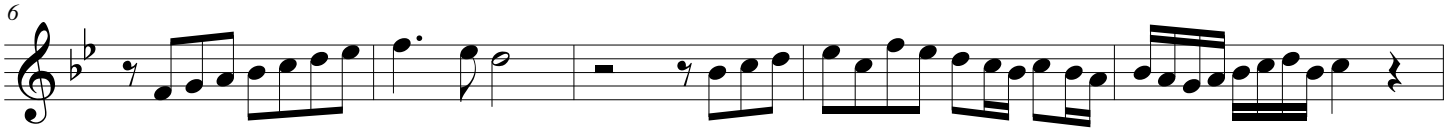
for Trumpet & Organ

D Trumpet

John Blow (1649 - 1708)

Arr. Michel Rondeau

Maestoso $\text{♩} = 90$



PRELUDE in C

(British Museum Add. Ms. 22099)

for Trumpet & Organ

John Blow (1649 - 1708)

Arr. Michel Rondeau

Organ

Trumpet in C

Maestoso ♩ = 90

C Tpt.

Org.

C Tpt.

Org.

C Tpt.

Org.