

Magnificat. n. 3. Del Sig. Barbieri.

Oboè Primo.

Maestoso. *for*

soli

soli

All.^o molto

for

Molto Presto.

Handwritten musical notation on a five-line staff in G major. The key signature has two sharps (F# and C#). The notation includes quarter notes, eighth notes, and a half note, with some notes beamed together.

Handwritten musical notation on a five-line staff in G major. The notation includes quarter notes and rests, with some notes beamed together.

Handwritten musical notation on a five-line staff in G major. The notation includes quarter notes and rests, with some notes beamed together.

Handwritten musical notation on a five-line staff in G major. The notation includes quarter notes and rests, with some notes beamed together.

Handwritten musical notation on a five-line staff in G major. The notation includes quarter notes and rests, with some notes beamed together.

Quia respexit.

All: aperto

Handwritten musical notation on a five-line staff in G major. The notation includes quarter notes and rests, with some notes beamed together.

Handwritten musical notation on a five-line staff in G major. The notation includes quarter notes and rests, with some notes beamed together.

Handwritten musical notation on a five-line staff in G major. The notation includes quarter notes and rests, with some notes beamed together.

Handwritten musical notation on a five-line staff in G major. The notation includes quarter notes and rests, with some notes beamed together.

Handwritten musical notation on a five-line staff in G major. The notation includes quarter notes and rests, with some notes beamed together.

Handwritten musical notation on a five-line staff. It begins with a treble clef and a key signature of one flat (Bb). The notation includes quarter notes, eighth notes, and rests. There are dynamic markings such as *f* and *fr.*, and articulation marks like accents and slurs. A fermata is placed over a quarter note. The number '2' appears above the staff in two locations.

Handwritten musical notation on a five-line staff. It continues with a treble clef and a key signature of one flat. The notation features eighth and sixteenth notes, often beamed together. There are dynamic markings like *fr.* and a '4' above the staff.

Handwritten musical notation on a five-line staff. It starts with a treble clef and a key signature of one flat. The notation includes quarter notes and rests. Dynamic markings include *f* and *fr.*, and a '2' above the staff.

Handwritten musical notation on a five-line staff. It begins with a treble clef and a key signature of one flat. The notation includes a double bar line with a repeat sign, followed by eighth and sixteenth notes. Dynamic markings include *f* and *fr.*, and the word 'soli' is written above the staff.

Handwritten musical notation on a five-line staff. It starts with a treble clef and a key signature of one flat. The notation includes eighth and sixteenth notes. Dynamic markings include *f* and *fr.*, and the word 'soli' is written above the staff.

Handwritten musical notation on a five-line staff. It begins with a treble clef and a key signature of one flat. The notation includes quarter notes and rests. Dynamic markings include *f* and *fr.*, and a '2' above the staff.

Handwritten musical notation on a five-line staff. It continues with a treble clef and a key signature of one flat. The notation features eighth and sixteenth notes.

Handwritten musical notation on a five-line staff. It starts with a treble clef and a key signature of one flat. The notation includes quarter notes and rests. A fermata is placed over a quarter note at the end of the staff.

Handwritten musical notation on a five-line staff. It begins with a treble clef and a key signature of one flat. The notation includes quarter notes and rests. Dynamic markings include *f* and *fr.*, and a '2' above the staff.

Handwritten musical notation on a five-line staff. It starts with a treble clef and a key signature of one flat. The notation includes quarter notes and rests. Dynamic markings include *f* and *fr.*. The word 'Vollis' is written at the end of the staff.

tr 2 *tr* 13.

sol.

sol.

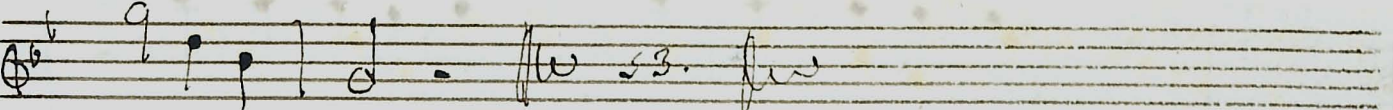
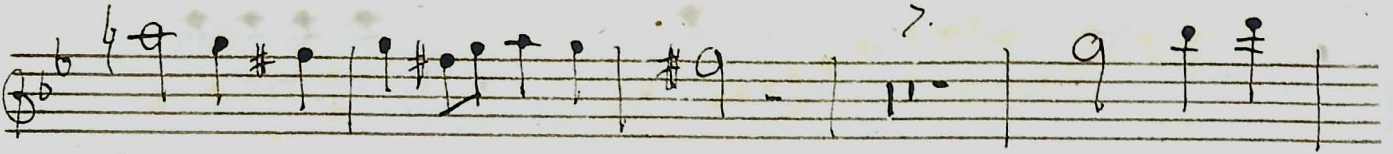
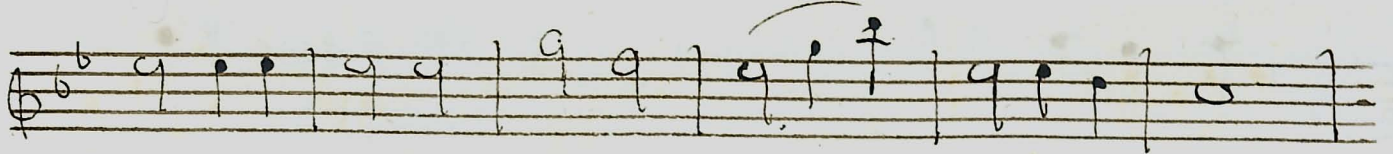
3.

Quia fecit.

Andante

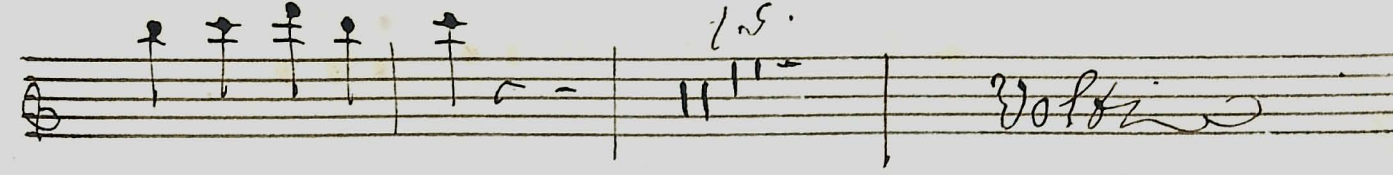
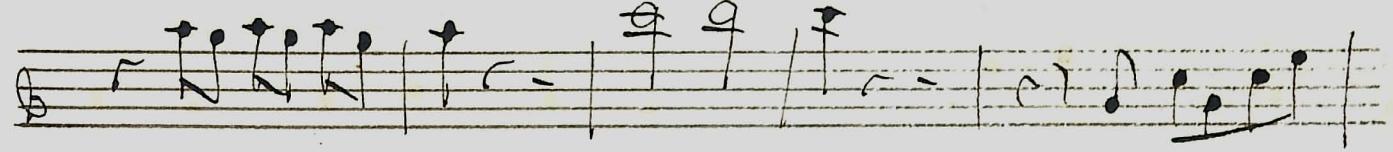
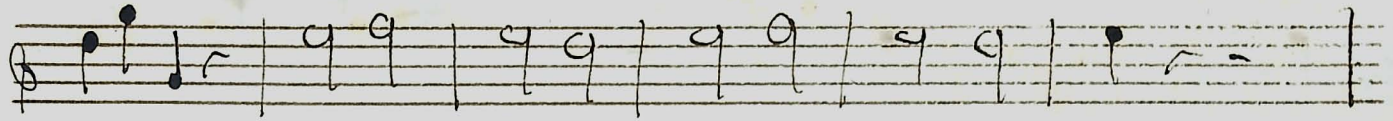
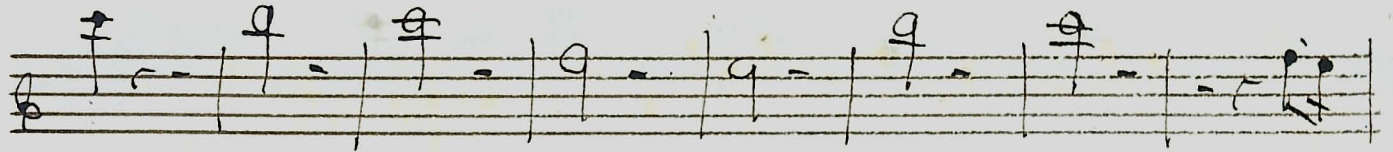
3

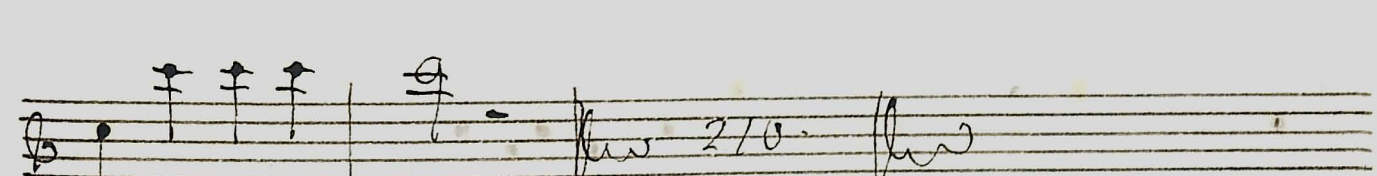
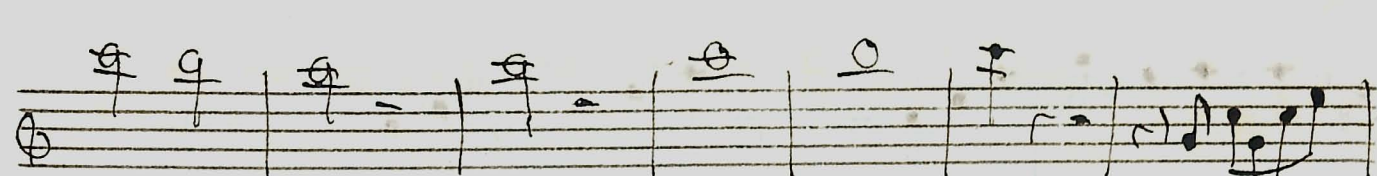
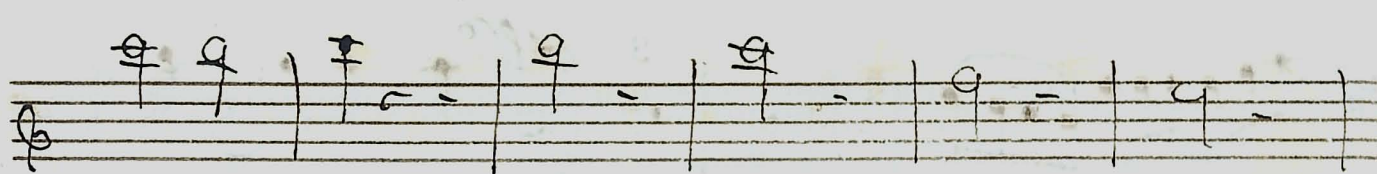
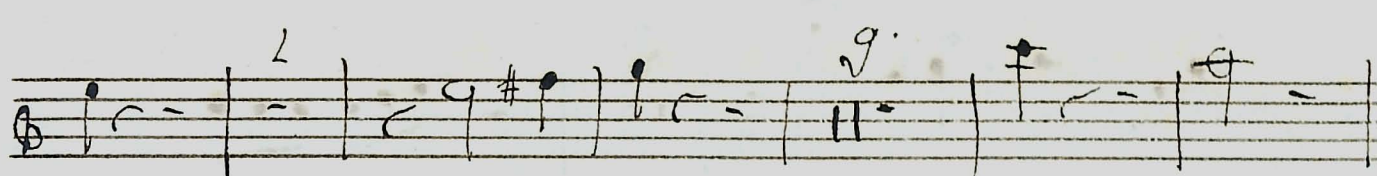
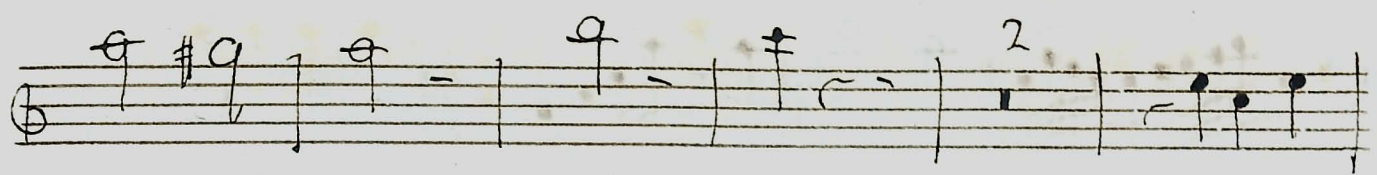
7.



Et misericordia.

All. maestoso.





Deposit: Tacet. Volta

Suscipit

And: Softer:

Staccato

Handwritten musical score on ten staves. The notation includes various notes, rests, and accidentals. The key signature changes from one flat to two sharps. The music is written in a cursive, handwritten style.

W. Volke

Gloria.

Maestoso. *for*

soli

All.^o

2

Handwritten musical notation on a five-line staff in G major (one sharp). The melody consists of eighth and quarter notes, starting with a quarter rest followed by a quarter note G, then eighth notes A and B, and ending with a quarter note G.

Handwritten musical notation on a five-line staff in G major. The melody continues with quarter and eighth notes, including a quarter rest and a quarter note G.

Handwritten musical notation on a five-line staff in G major. The melody continues with quarter and eighth notes, including a quarter rest and a quarter note G.

Handwritten musical notation on a five-line staff in G major. The melody continues with quarter and eighth notes, including a quarter rest and a quarter note G.

Handwritten musical notation on a five-line staff in G major. The melody continues with quarter and eighth notes, including a quarter rest and a quarter note G.

Handwritten musical notation on a five-line staff in G major. The melody consists of quarter notes. Dynamic markings *pno* and *cresc.* are written above the staff.

Handwritten musical notation on a five-line staff in G major. The melody consists of quarter notes. Dynamic markings *L* and *fr.* are written above the staff.

Handwritten musical notation on a five-line staff in G major. The melody consists of quarter notes.

Handwritten musical notation on a five-line staff in G major. The melody consists of quarter notes, ending with a fermata over a quarter note G.

Gang Deo.