

Quinto Ballo detto lo Ninfe di Senna

Lorenzo Allegri (c1573-1648)

Musical notation for the first part of the piece, measures 1-12. The notation is in treble clef with a common time signature (C). It consists of three staves of music. The first staff contains measures 1-6, the second staff contains measures 7-11, and the third staff contains measures 12-13. The piece concludes with a double bar line and a 6/4 time signature.

Seconda Parte: Canario

Musical notation for the second part of the piece, measures 1-13. The notation is in treble clef with a 6/4 time signature. It consists of three staves of music. The first staff contains measures 1-4, the second staff contains measures 5-8, and the third staff contains measures 9-13. The piece concludes with a double bar line and a common time signature (C).

Terza Parte: Gavotta

Musical notation for the third part of the piece, measures 1-11. The notation is in treble clef with a common time signature (C). It consists of three staves of music. The first staff contains measures 1-6, the second staff contains measures 7-10, and the third staff contains measures 11-12. The piece concludes with a double bar line and a 6/4 time signature.

Quarta & Ultima Parte: Corrente

15 *1*



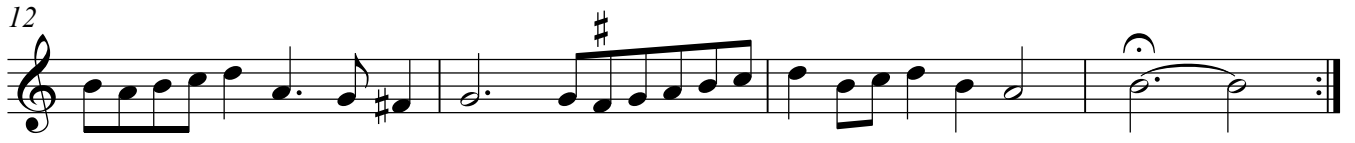
4



8



12



Quinto Ballo detto lo Ninfe di Senna

Lorenzo Allegri (c1573-1648)

Musical notation for the first part of the piece, 'Quinto Ballo detto lo Ninfe di Senna'. It consists of three staves of music in treble clef, common time (C). The first staff starts with a repeat sign and ends with a double bar line. The second staff begins at measure 7. The third staff begins at measure 12 and ends with a double bar line and a 6/4 time signature change.

Seconda Parte: Canario

Musical notation for the second part of the piece, 'Seconda Parte: Canario'. It consists of three staves of music in treble clef, 6/4 time. The first staff starts with a repeat sign and ends with a double bar line. The second staff begins at measure 5. The third staff begins at measure 9 and ends with a double bar line and a common time (C) change.

Terza Parte: Gavotta

Musical notation for the third part of the piece, 'Terza Parte: Gavotta'. It consists of three staves of music in treble clef, common time (C). The first staff starts with a repeat sign and ends with a double bar line. The second staff begins at measure 7. The third staff begins at measure 11 and ends with a double bar line and a 6/4 time signature change.

Quarta & Ultima Parte: Corrente

15 *1*

4

8

12

Viola 1

Quinto Ballo detto lo Ninfe di Senna

Lorenzo Allegri (c1573-1648)



7



12



Seconda Parte: Canario

1



5



9



13



Terza Parte: Gavotta

1



7



11



15

Quarta & Ultima Parte: Corrente

1



5



9



13



Quinto Ballo detto lo Ninfe di Senna

Lorenzo Allegri (c1573-1648)



7



12

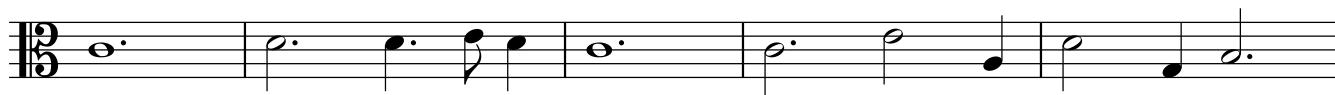


Seconda Parte: Canario

1



6



11



2

Terza Parte: Gavotta

1



7



11



15

1

Quarta & Ultima Parte: Corrente



5



9

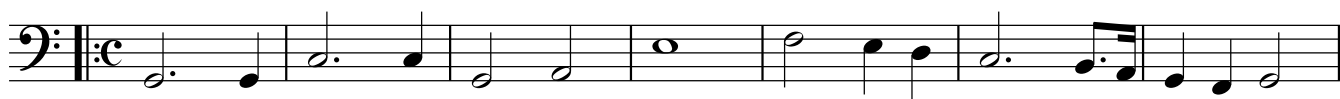


12



Violoncello Quinto Ballo detto lo Ninfe di Senna

Lorenzo Allegri (c1573-1648)



8



13



Seconda Parte: Canario

1



7



12



Terza Parte: Gavotta

1



7



11



Quarta & Ultima Parte: Corrente

15

1



5



9



13

