

## RICASOLI COLLECTION

Shelf no.: Profana 46 (old B.4)

Composer: Dalvimare, Martin-Pierre, 1772-1839

OCLC#: 773939846

RISM A/II: [000123588 \(123.588\)](#)

1.) Air varié/Pour La Harpe/et Coro u Violon/Par Dalvimare/Harpe

Manuscript.

In ink.

23.3 x 32.6 cm.

7 pp.

**Note: Harp part only. Horn and violin parts are lacking.**



||w Air Varié ||w

||w pour ||w

||w La Harpe ||w

||w et for ou Violon ||w

||w Par Dalvimard ||w

||w Harpe ||w

46.

4p.



*Andantino con Variaz.*

Handwritten musical score for the first section, 'Andantino con Variaz.' The score is written on four staves. The top two staves are in treble clef, and the bottom two are in bass clef. The time signature is 2/4. The music features a variety of rhythmic patterns, including eighth and sixteenth notes, and rests. There are several measures with a fermata over a note. The notation is clear and legible.

*Var. I.*

Handwritten musical score for the first variation, 'Var. I.' The score is written on four staves. The top two staves are in treble clef, and the bottom two are in bass clef. The time signature is 2/4. The music features a variety of rhythmic patterns, including eighth and sixteenth notes, and rests. There are several measures with a fermata over a note. The notation is clear and legible.



Handwritten musical notation for the first system, consisting of four staves. The top staff begins with a '2' above it. The notation includes various rhythmic values, slurs, and dynamic markings.

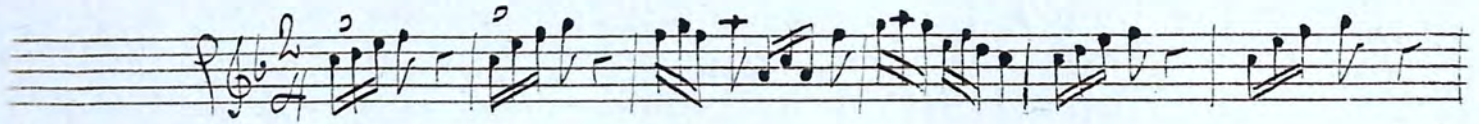
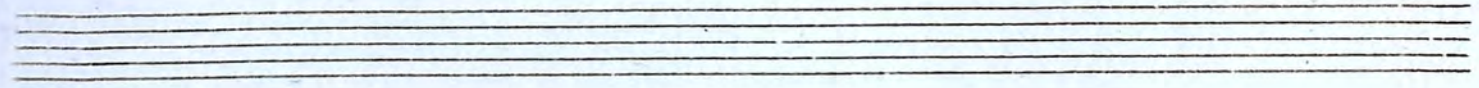
Handwritten musical notation for the second system, consisting of four staves. The notation continues with complex rhythmic patterns and slurs.

Handwritten musical notation for the third system, consisting of two staves. The notation features dense chordal textures and rhythmic patterns.

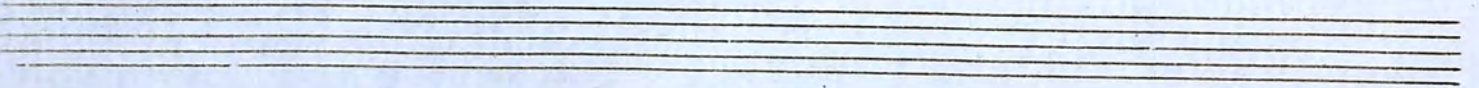
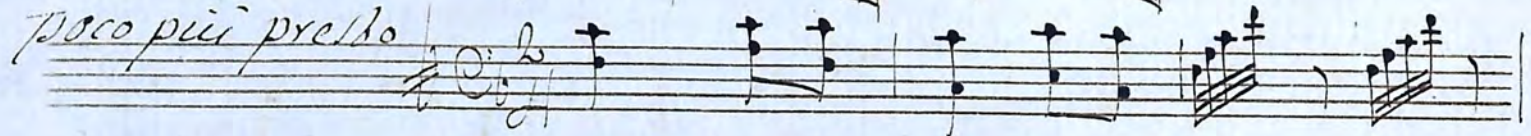
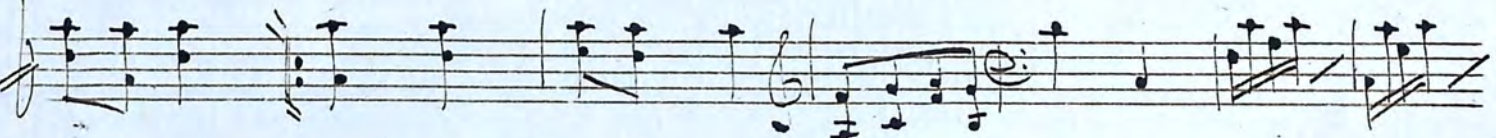
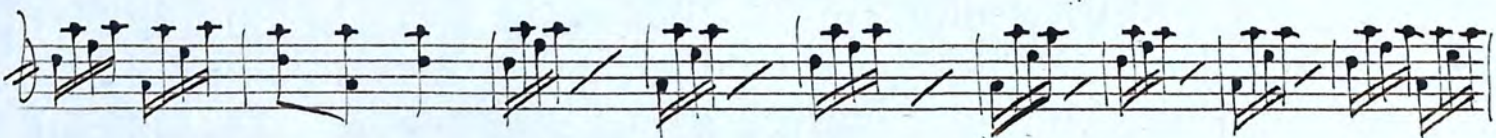
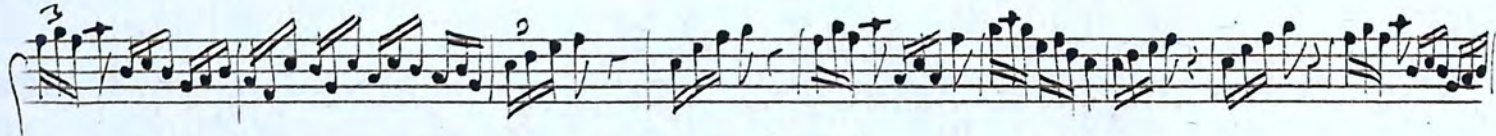
Handwritten musical notation for the fourth system, consisting of two staves. The notation shows a continuation of the musical themes.

||w B. Volbi presto segue ||w





*Var. II:*





Handwritten musical score for piano, consisting of 12 systems of staves. The first system has a treble clef and a 3/4 time signature. The second system has a bass clef. The third system has a bass clef. The fourth system has a bass clef. The fifth system has a bass clef. The sixth system has a bass clef. The seventh system has a bass clef and the instruction "primo Tempo". The eighth system has a bass clef. The ninth system has a bass clef. The tenth system has a bass clef. The eleventh system has a bass clef. The twelfth system has a bass clef. The music is written in a single system with two staves per system, alternating between treble and bass clefs.

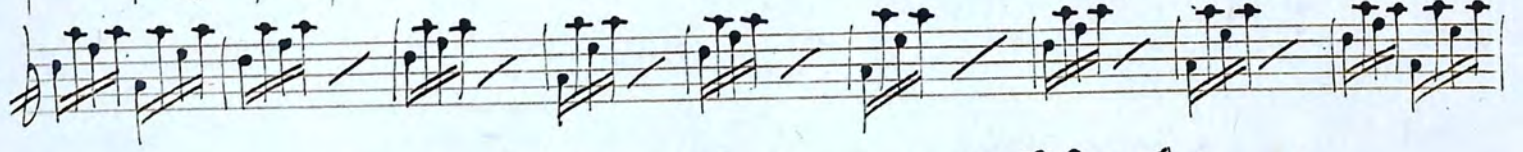
||w N. Polli presto segue ||w



Var: **V** 

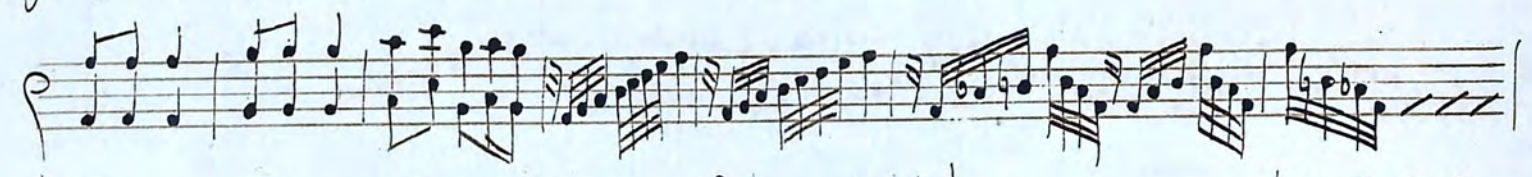
*poco più presto* 

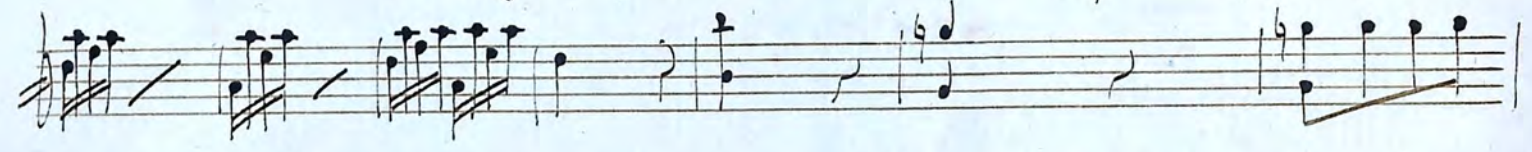




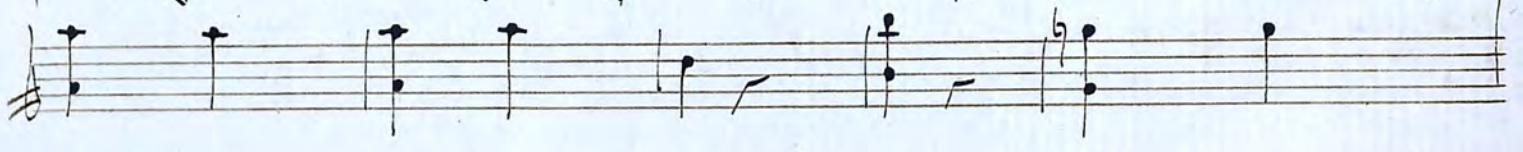




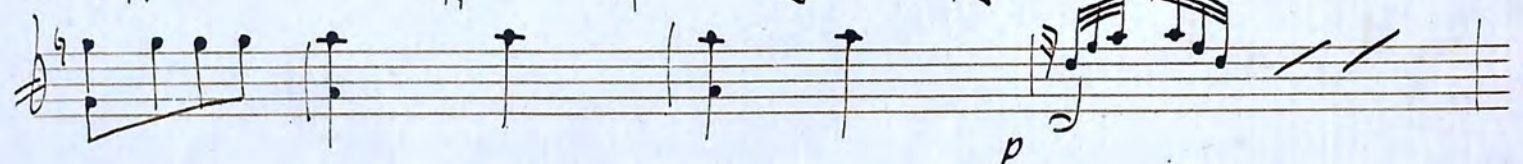




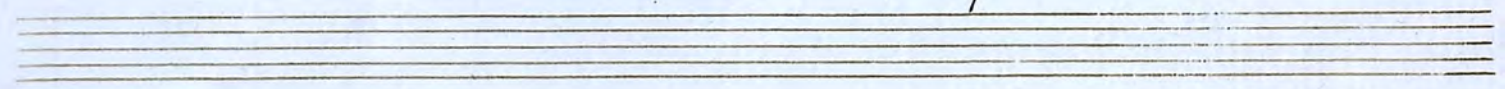




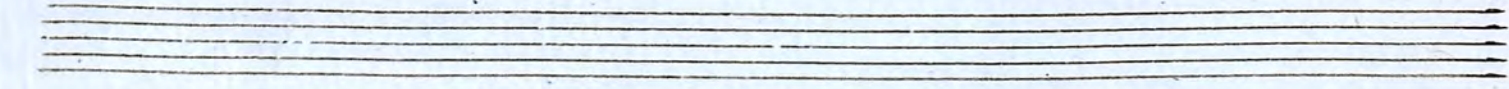




*p*







Handwritten musical notation on two staves. The upper staff contains a melodic line with eighth and sixteenth notes, while the lower staff provides a bass accompaniment with chords and single notes.

Handwritten musical notation on two staves. The upper staff continues the melodic line with more complex rhythmic patterns, and the lower staff provides harmonic support.

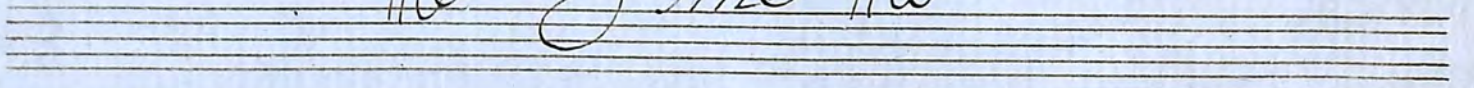
Handwritten musical notation on two staves. The upper staff features a dense texture of sixteenth-note passages, and the lower staff consists of a series of chords.

Handwritten musical notation on two staves. The upper staff has a melodic line with some slurs, and the lower staff has chords. The word "Solo" is written above the lower staff.

Handwritten musical notation on two staves. The upper staff continues the melodic line, and the lower staff has chords. The word "Solo" is written above the lower staff.

Handwritten musical notation on two staves. The upper staff has a few notes, and the lower staff has chords, indicating the end of a section.

Handwritten text: *||o Fine ||o*





8 9 M.  
22

4 50.000

