

Nisi Dominus. 3. del sig. Bartieri.

Contrabasso.

Handwritten musical notation on a five-line staff, starting with a treble clef, a common time signature, and a dynamic marking of *ff*.

Handwritten musical notation on a five-line staff, continuing the piece with various rhythmic values and accidentals.

Handwritten musical notation on a five-line staff, featuring a key signature change to one flat and a dynamic marking of *ff*.

Handwritten musical notation on a five-line staff, showing a key signature change to two sharps.

Handwritten musical notation on a five-line staff, continuing the melodic and harmonic development.

Handwritten musical notation on a five-line staff, starting with a treble clef and a dynamic marking of *all. molto*.

Handwritten musical notation on a five-line staff, featuring a treble clef and a key signature of one sharp.

Handwritten musical notation on a five-line staff, continuing the piece with a treble clef and a key signature of one sharp.

Handwritten musical notation on a five-line staff, featuring a treble clef and a key signature of one sharp.

Handwritten musical notation on a five-line staff, concluding the piece with a treble clef and a key signature of one sharp.

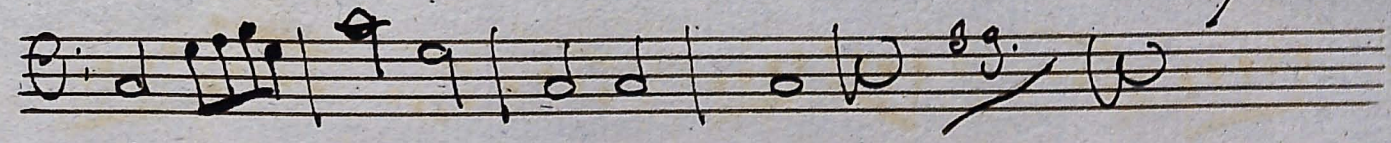
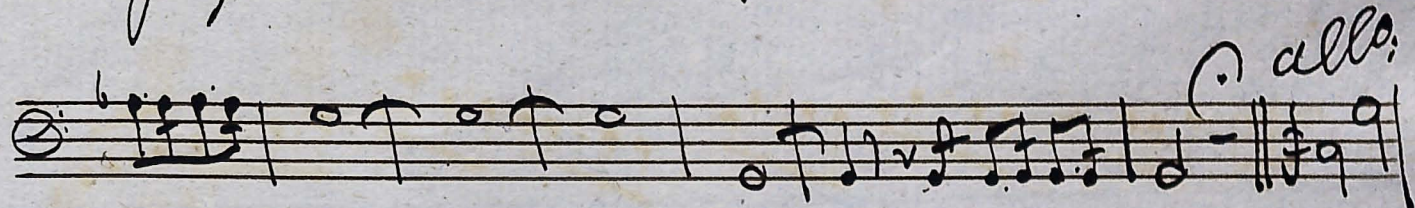


A handwritten musical score consisting of ten staves. The notation is in a single system, likely for a single melodic line. The key signature is one sharp (F#), and the time signature is common time (C). The music features a variety of rhythmic values, including eighth and sixteenth notes, and rests. There are several instances of slurs and accents. The notation is somewhat irregular, with some notes appearing to be written as groups or with unusual stems. The paper shows signs of age, including some staining and discoloration.





Gloria



Laud Deo