

Sonata

Largo

Johann Friedrich Fasch (1688-1758)

Fag. (o Vc.)

4

7

10

14

18

22

25

28

Adagio

Allegro

1 Viol.

8

8049  
F15  
3



# Flauto

93

100

Largo  
Viol. 5 Viol.

12

18

24

30

Allegro  
Viol.

7

13

## Flauto

Musical score for Flauto, measures 23 to 81. The score is written in treble clef with a key signature of two sharps (F# and C#). The music features various rhythmic patterns, including eighth and sixteenth notes, and includes trills (tr) and accents. Measure numbers are indicated at the beginning of each line: 23, 30, 35, 40, 46, 53, 60, 67, 76, and 81. The score concludes with a double bar line and repeat dots at measure 81.

**Violino**

**Sonata**

**Largo**

Johann Friedrich Fasch (1688 - 1758)

Fag. (o Vc.) Fl.

4

7

10

13

17

21

25

28

**Adagio**

**Allegro**

Fag. (o Vc.)

7

13

SC49  
F15  
3

## Violino

Violino musical score, page 3, measures 20-98. The score is written in treble clef with a key signature of one sharp (F#) and a common time signature (C). The music consists of ten staves of notation, each beginning with a measure number. The notation includes various rhythmic values, accidentals, and articulation marks such as trills and slurs. The piece concludes with a double bar line at the end of the final staff.

Measures 20, 28, 35, 41, 47, 54, 63, 68, 74, 79, 86, 92, 98.

# Violino

Largo

Musical score for Violino, Largo section, measures 1-30. The score is written on a single treble clef staff in 3/4 time with a key signature of two sharps (F# and C#). The tempo is marked 'Largo'. The music consists of a single melodic line with various note values, including quarter, eighth, and sixteenth notes, often beamed together. Slurs are used to group phrases. Measure numbers 7, 12, 18, 24, and 30 are indicated at the start of their respective lines.

Allegro

Musical score for Violino, Allegro section, measures 1-18. The score is written on a single treble clef staff in 3/8 time with a key signature of two sharps (F# and C#). The tempo is marked 'Allegro'. The music is more rhythmic and active than the Largo section, featuring eighth and sixteenth notes, often beamed together. Slurs and accents are used. Measure numbers 6, 11, and 18 are indicated at the start of their respective lines.

## Violino

24

29

35 1

41

48

54

61

68 *tr* *tr*

75

80

Detailed description: This page of a violin score contains ten staves of music, numbered 24 to 80. The key signature is two sharps (F# and C#). The music consists of a single melodic line. Measures 24-28 are eighth-note patterns. Measures 29-34 are quarter-note patterns with some slurs. Measure 35 starts with a first finger fingering '1' and a quarter rest. Measures 36-40 are eighth-note patterns. Measures 41-47 are eighth-note patterns with some slurs. Measures 48-53 are eighth-note patterns. Measures 54-60 are eighth-note patterns. Measures 61-67 are eighth-note patterns with some slurs. Measures 68-74 are eighth-note patterns with trills marked 'tr' in measures 68 and 69. Measures 75-79 are eighth-note patterns. Measure 80 is a quarter-note pattern ending with a double bar line and repeat dots.



Fagotto o Violoncello

Sonata

Johann Friedrich Fasch (1688 - 1758)

Largo

Musical score for the Largo section, measures 1 through 27. The score is written in bass clef with a key signature of one sharp (F#) and a common time signature (C). It features a variety of rhythmic patterns, including eighth and sixteenth notes, and rests. Measure numbers 4, 10, 13, 16, 19, 22, and 25 are indicated at the start of their respective lines. A 'Fl.' (Flute) part is shown in treble clef starting at measure 4.

Adagio

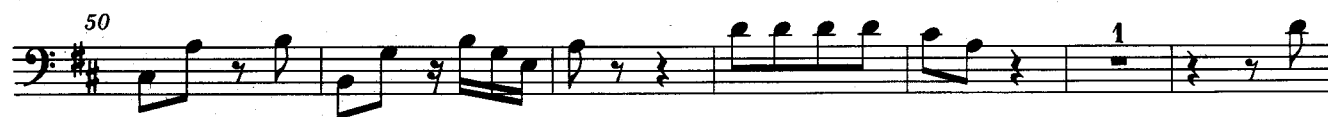
Musical score for the Adagio section, measures 28 through 34. The tempo is marked 'Adagio'. The score is in bass clef with a key signature of one sharp (F#) and a common time signature (C). It features a slower, more spacious melodic line with some rests and a fermata over measure 32.

Allegro

Musical score for the Allegro section, measures 35 through 41. The tempo is marked 'Allegro'. The score is in bass clef with a key signature of one sharp (F#) and a common time signature (C). It features a faster, more rhythmic melodic line with eighth and sixteenth notes. Measure numbers 7 and 1 are indicated at the start of their respective lines.

SC49  
F15  
3

## Fagotto o Violoncello



### Fagotto o Violoncello

91

96

100

**Largo**  
Viol.

8

15

21

28

**Allegro**

6

13

## Fagotto o Violoncello

20

28

35

40

47

52

58

64

70

74

81

The image shows a musical score for Bassoon or Cello. It consists of ten staves of music, each starting with a measure number. The key signature is two sharps (F# and C#). The music is written in bass clef. The first staff (measures 20-27) features a rhythmic pattern of eighth notes with a triplet of eighth notes at the end. The second staff (measures 28-34) continues with eighth notes. The third staff (measures 35-39) begins with a repeat sign and contains eighth notes. The fourth staff (measures 40-46) continues with eighth notes. The fifth staff (measures 47-51) features a dense eighth-note texture. The sixth staff (measures 52-57) continues with eighth notes. The seventh staff (measures 58-63) continues with eighth notes. The eighth staff (measures 64-69) continues with eighth notes. The ninth staff (measures 70-73) features a rhythmic pattern of eighth notes with a triplet of eighth notes at the end. The tenth staff (measures 74-81) continues with eighth notes and ends with a double bar line.

**Basso continuo**

(Violoncello)

**Sonata**

Largo

Johann Friedrich Fasch (1688 - 1758)



Allegro



5049  
F15  
3

### Basso continuo

21 3

30

36

43

49

55

62 2

70

77 4

### Basso continuo

88 Fl.  Musical notation for measures 88-92. Measure 88 starts with a treble clef and a 'Fl.' marking, followed by a series of eighth notes. The rest of the passage is in bass clef.

93  Musical notation for measures 93-98. The passage continues in bass clef with various rhythmic values.

99  Musical notation for measures 99-104. The passage continues in bass clef, ending with a double bar line.

### Largo

 Musical notation for measures 1-7 of the Largo section. The time signature is 3/4 and the key signature has two sharps.

8  Musical notation for measures 8-14 of the Largo section.

15  Musical notation for measures 15-21 of the Largo section.

22  Musical notation for measures 22-28 of the Largo section.

29  Musical notation for measures 29-35 of the Largo section, featuring a long melodic line with a fermata.

### Allegro

 Musical notation for measures 1-6 of the Allegro section. The time signature is 3/8.

7  Musical notation for measures 7-13 of the Allegro section.

## Basso continuo

