

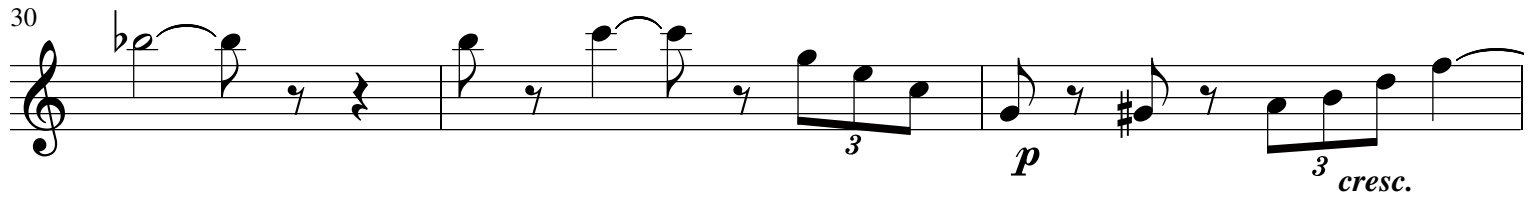
# Regard sur le Siècle passé

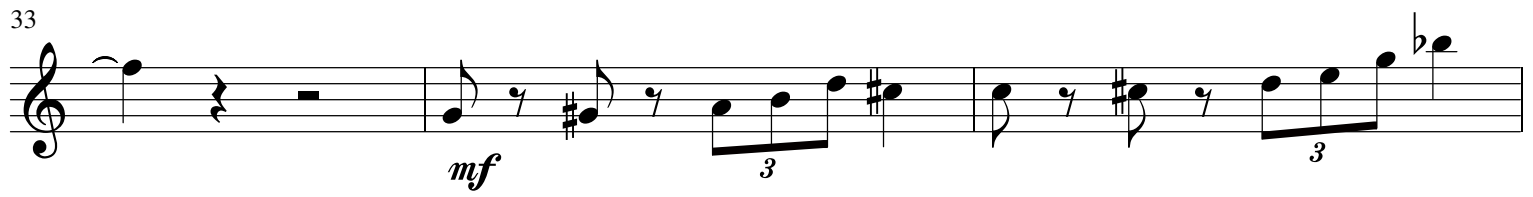
1 -La marche des dictateurs

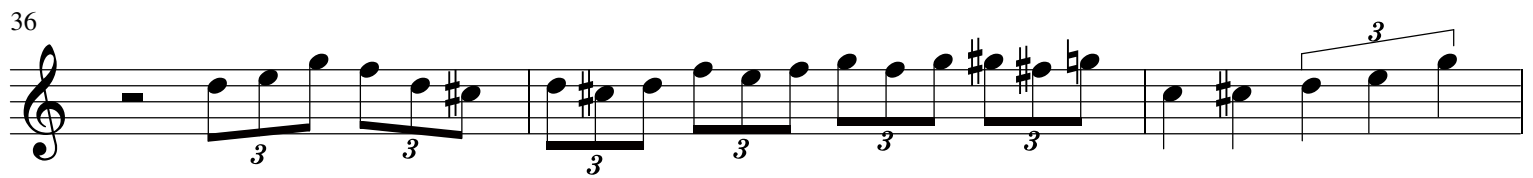
Alain Lefebure

1  $\text{♩} = 120$  *marcato*

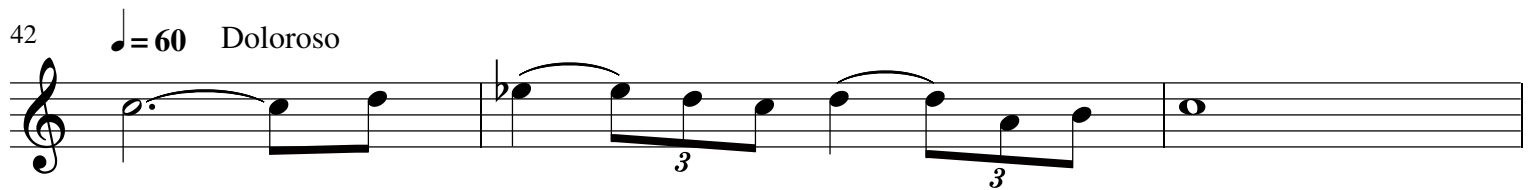
Violin I

30 

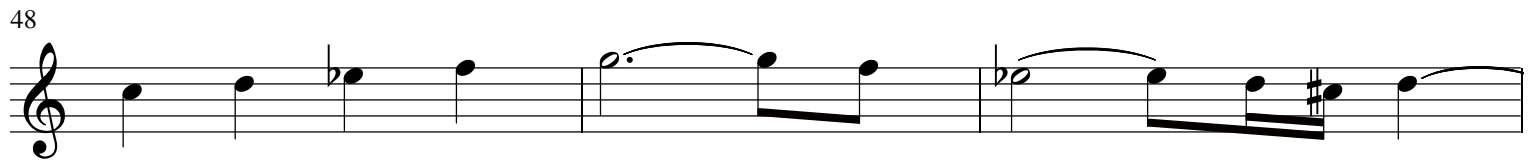
33 

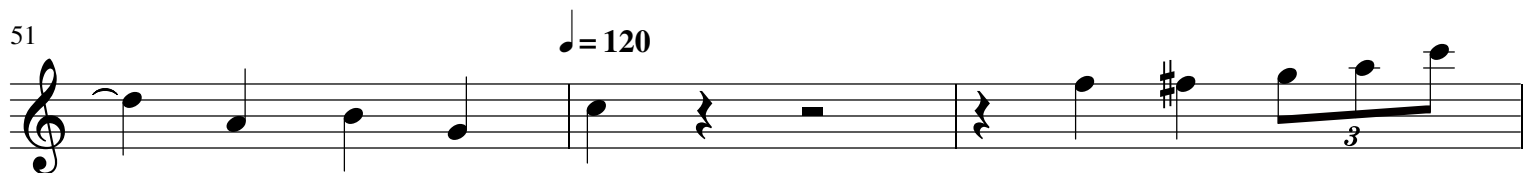
36 

39 

42  $\text{♩} = 60$  *Doloroso* 

45 

48 

51  $\text{♩} = 120$  

54 

57

60

63

66

72 *Doloroso*

75

78

80

85

88 Musical notation for measures 88-90. Measure 88 starts with a treble clef and a key signature of one flat (Bb). It contains three triplet markings over eighth notes. Measure 90 ends with a double bar line and the word "Fine".

2-The Peace and Love Days

91  $\text{♩} = 100$  Musical notation for measures 91-93. Measure 91 begins with a tempo marking of quarter note = 100 and a dynamic marking of *p*. Measures 92 and 93 contain rests and notes with accents.

94 Musical notation for measures 94-96. Measures 94 and 95 contain notes with accents and slurs. Measure 96 contains notes with accents.

97 Musical notation for measures 97-99. Measure 97 contains notes with slurs. Measure 99 has a dynamic marking of *pp*.

100 Musical notation for measures 100-102. Measure 100 has a rest. Measure 102 has a dynamic marking of *mp*.

103 Musical notation for measures 103-105. Measure 103 has a dynamic marking of *mf*. Measure 105 has a whole rest.

106 Musical notation for measures 106-108. Measures 106-108 contain eighth notes with stems up.

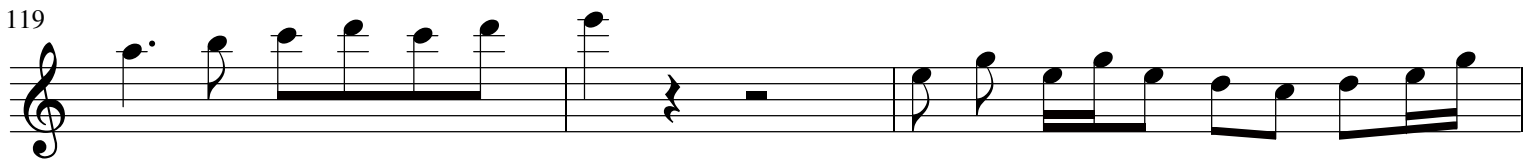
109 Musical notation for measures 109-111. Measures 109-111 contain eighth notes with stems up.

112 Musical notation for measures 112-114. Measures 112-114 contain eighth notes with stems up.

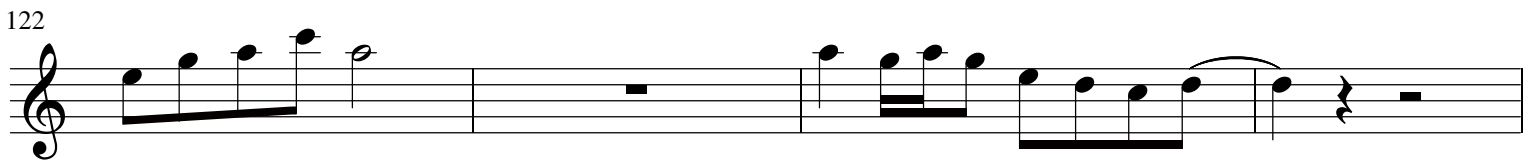
115



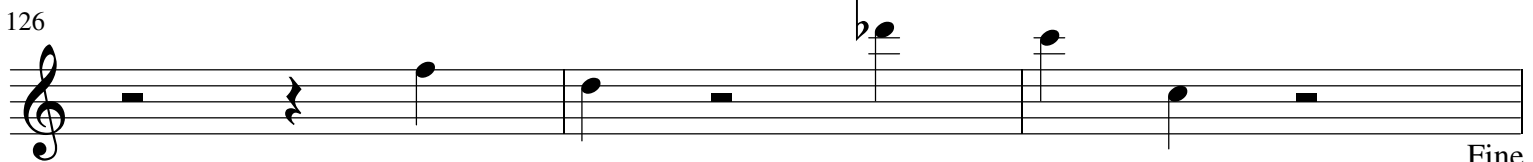
119



122



126



Fine

Rondeau du nouveau millénaire

129

$\text{♩} = 100$       3



*mf*

134

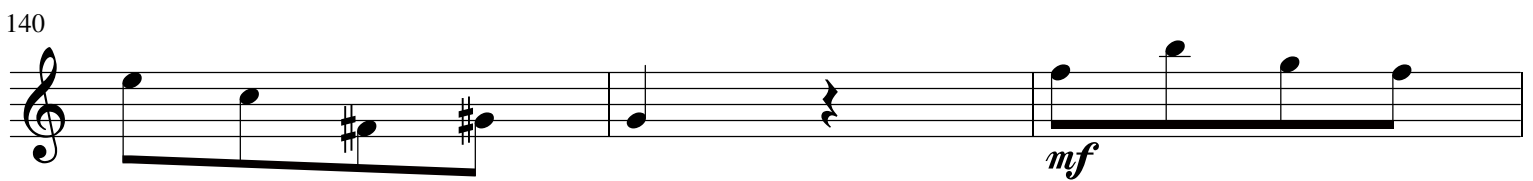


*p*

137

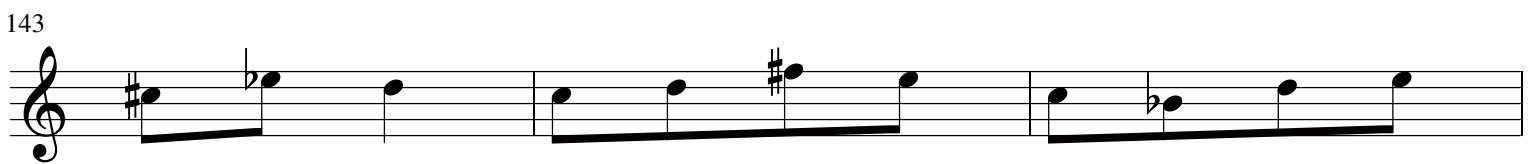


140



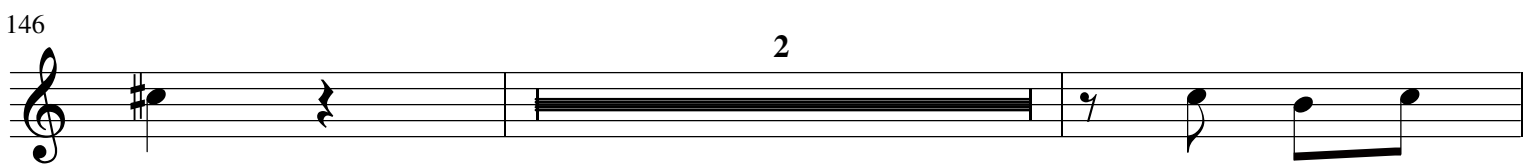
*mf*

143



146

2



150

*cresc.*

2

156

*f*

162

*f*

166

*f*

169

*p* *cresc.*

172

*f*

176

*f*

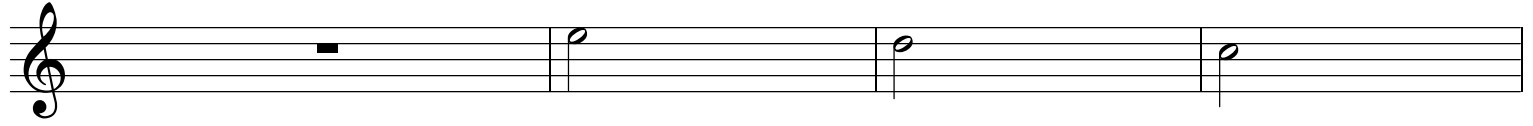
180

*p*

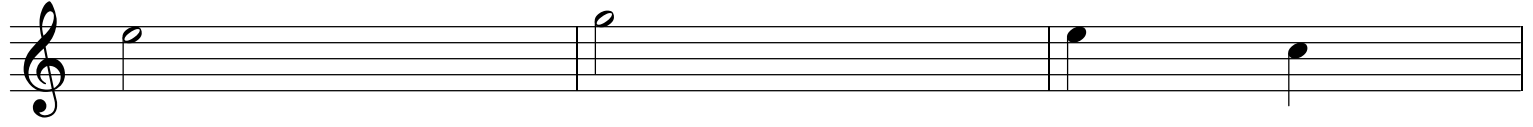
185

*f*

188



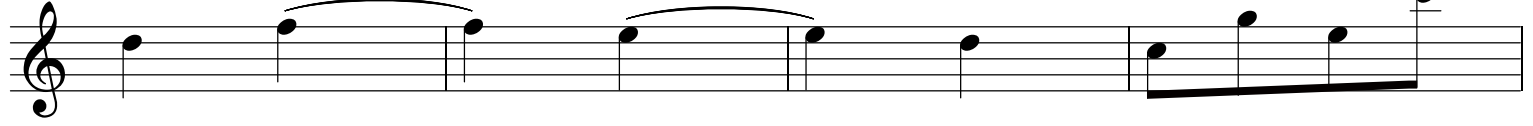
192



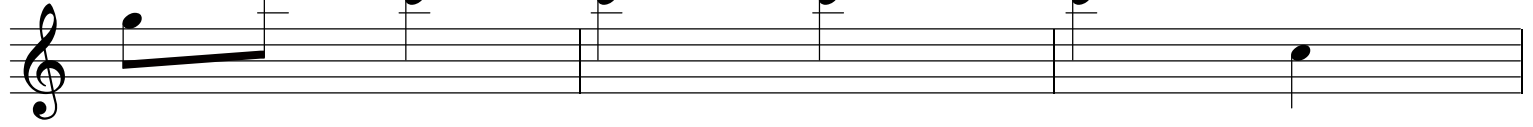
195



198



202



205



208



211

