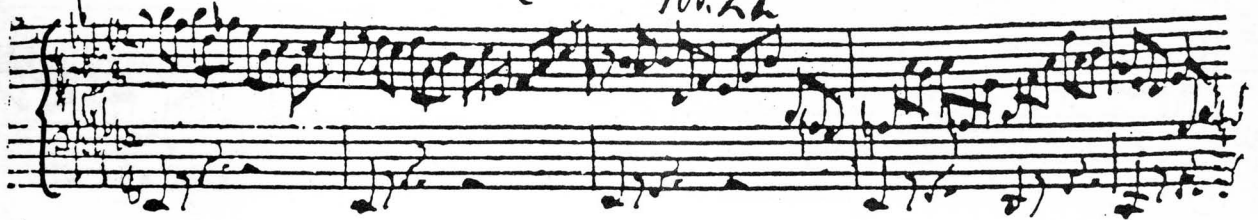


Prelude pour la Luth. à 6 cordes. No. 22 par J. S. Bach.



Handwritten musical notation on a five-line staff. The notation includes a treble clef, a key signature of one flat (B-flat), and a 3/4 time signature. The melody consists of eighth and sixteenth notes, with some rests. The bass line is written on the lower part of the staff, primarily using quarter and eighth notes.

Handwritten musical notation on a five-line staff, continuing the piece. It features a treble clef, a key signature of one flat, and a 3/4 time signature. The melody is composed of eighth and sixteenth notes, with some rests. The bass line continues with quarter and eighth notes.

Handwritten musical notation on a five-line staff. The notation includes a treble clef, a key signature of one flat, and a 3/4 time signature. The melody consists of eighth and sixteenth notes, with some rests. The bass line is written on the lower part of the staff, primarily using quarter and eighth notes.

Handwritten musical notation on a five-line staff. The notation includes a treble clef, a key signature of one flat, and a 3/4 time signature. The melody consists of eighth and sixteenth notes, with some rests. The bass line is written on the lower part of the staff, primarily using quarter and eighth notes.

Handwritten musical notation on a five-line staff, continuing the piece. It features a treble clef, a key signature of one flat, and a 3/4 time signature. The melody is composed of eighth and sixteenth notes, with some rests. The bass line continues with quarter and eighth notes.

Handwritten musical notation on a five-line staff. The notation includes a treble clef, a key signature of one flat, and a 3/4 time signature. The melody consists of eighth and sixteenth notes, with some rests. The bass line is written on the lower part of the staff, primarily using quarter and eighth notes.

Handwritten musical notation on a five-line staff. The notation includes a treble clef, a key signature of one flat, and a 3/4 time signature. The melody consists of eighth and sixteenth notes, with some rests. The bass line is written on the lower part of the staff, primarily using quarter and eighth notes.

Handwritten musical notation on a five-line staff, continuing the piece. It features a treble clef, a key signature of one flat, and a 3/4 time signature. The melody is composed of eighth and sixteenth notes, with some rests. The bass line continues with quarter and eighth notes.

Handwritten musical notation on a five-line staff. The notation includes a treble clef, a key signature of one flat, and a 3/4 time signature. The melody consists of eighth and sixteenth notes, with some rests. The bass line is written on the lower part of the staff, primarily using quarter and eighth notes.

A page of handwritten musical notation consisting of ten systems, each with two staves. The notation is dense and complex, featuring a variety of note values, rests, and dynamic markings. The first staff begins with a treble clef and a key signature of one flat. The music is written in a cursive, handwritten style, with some ink bleed-through visible from the reverse side of the page. The notation includes many sixteenth and thirty-second notes, often beamed together in groups. There are also some larger notes and rests interspersed throughout. The overall appearance is that of a working draft or a composer's sketch for a piece of music.

A handwritten musical score consisting of ten staves. The notation is dense and includes various musical symbols such as notes, rests, and clefs. The handwriting is in black ink on aged paper. The score appears to be a single melodic line with some accompaniment, possibly for a piano or guitar. The notation is somewhat complex, with many beamed notes and some unusual clef positions.

Handwritten musical notation and symbols at the bottom of the page, including notes, clefs, and other musical markings.