

CHORALE PRELUDE

(on: *Sei gegrüsst, Jesu, du einiger Trost*)
for Trumpet & Organ

Score (00':46'')

Michael Gotthardt Fischer (1773 - 1829)

Arr. Michel Rondeau

Serioso $\text{♩} = 50$

Trumpet in C

Organ

This system contains the first six measures of the score. The Trumpet in C part is written in a single staff with a treble clef and a key signature of one flat. The Organ part is written in two staves (treble and bass clefs) with a key signature of one flat. The tempo is marked 'Serioso' with a quarter note equal to 50 beats per minute.

C Tpt.

Org.

This system contains measures 7 through 13. The C Trumpet part continues with a treble clef. The Organ part continues with two staves. Measure numbers 7, 8, 9, 10, 11, 12, and 13 are indicated at the beginning of their respective lines.

C Tpt.

Org.

This system contains the final five measures of the score, from measure 14 to 18. The C Trumpet part and Organ part continue with their respective staves. Measure numbers 14, 15, 16, 17, and 18 are indicated at the beginning of their respective lines. The score concludes with a double bar line.

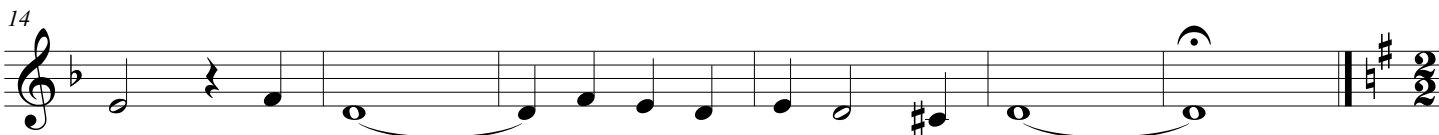
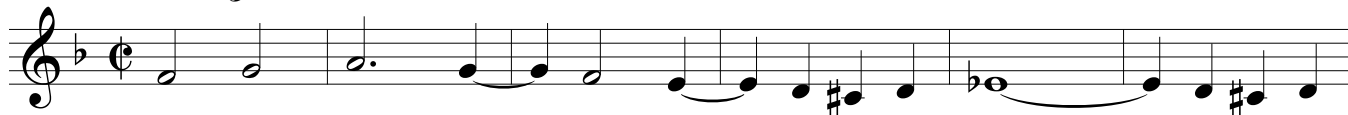
CHORALE PRELUDE

(on: *Sei gegrüsst, Jesu, du einiger Trost*)
for Trumpet & Organ

C Trumpet

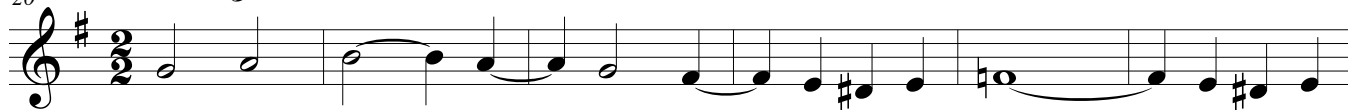
Michael Gotthardt Fischer(1773 - 1829)
Arr. Michel Rondeau

Serioso $\text{♩} = 50$



Bb Trumpet

20 Serioso $\text{♩} = 50$



CHORALE PRELUDE

(on: *Sei gegrüsst, Jesu, du einiger Trost*)
for Trumpet & Organ

Michael Gotthardt Fischer (1773 - 1829)

Arr. Michel Rondeau

Organ

Trumpet in C

Organ

Serioso ♩ = 50

C Tpt.

Org.

C Tpt.

Org.