

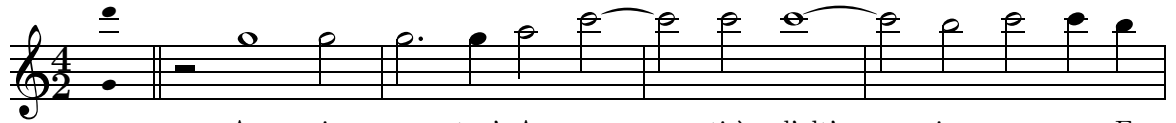
Accingeteui Amanti

Battaglia A 10.

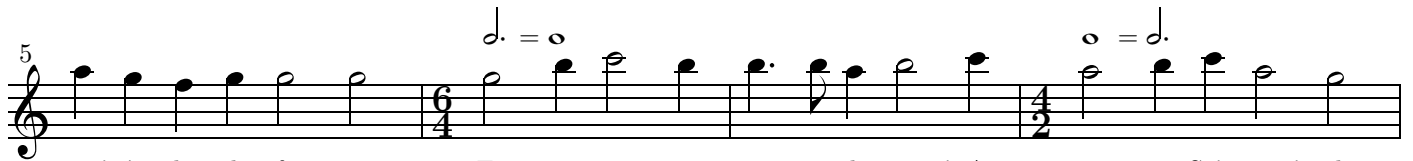
Orazio Vecchi (1550-1605)

Selva di Varia Ricreatione, Venezia 1590, no. 37

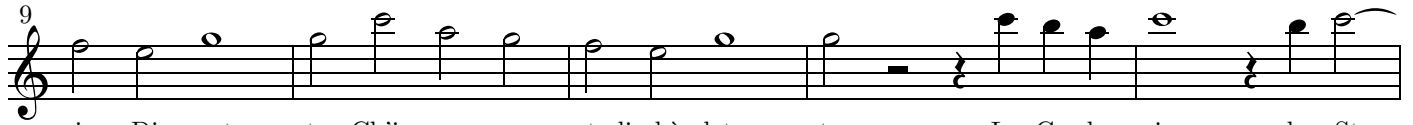
Alto
Tr. Recorder



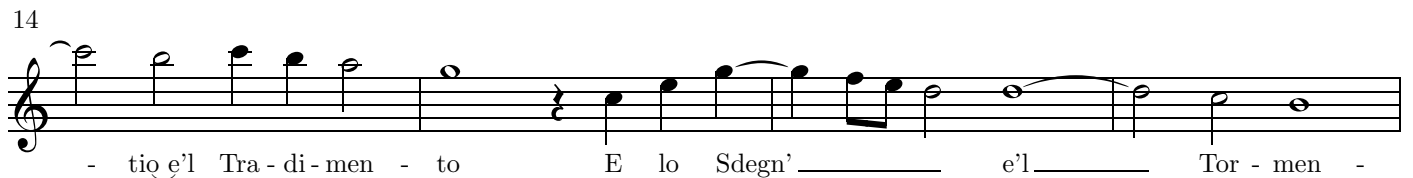
Ac - cin - ge - teu' A - man - ti à l'alt' im - pre - sa E



stat' à la di - fe - sa Ec - co ec - co ec - co che contr' A - mo - re Se'n vien' il



rio Di - spet - to Ch'in sua cu - stodia hà elet - to La Ge - lo - sia lo Stra -



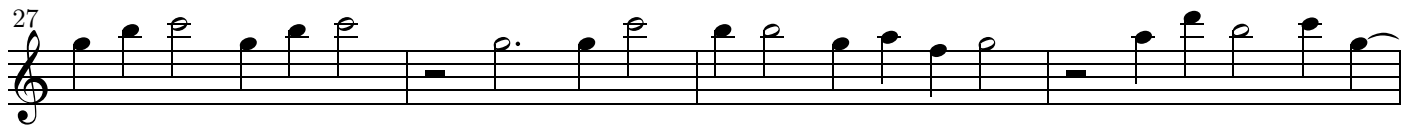
- tio e'l Tra - di - men - to E lo Sdegn' e'l Tor - men -



to Ec - co ecc' il ma - cro Li - uo - re spiegar l'in - se - gna u - dit' u -



di - te già'l ru - mo - re A l'arm' à l'ar - ma à l'arm' à l'ar - ma Buttè sel - le Buttè sel - le à cauall'



à ca - uall' à ca - uall' Sù sù fi - di fan - ta - ci - ni Gli ne - mi - ci Gli



ne - mi - ci But - tè sell' à ca - uall' à ca - uall' à ca - uall'

36 $\circ = \text{d.}$

à l'arm' à l'ar - ma à l'arm' à l'ar - ma à l'arma à l'ar - ma

41

Già par che'l ciel Già par che'l ciel che'l ciel rimbom - be che'l ciel rimbom - be

45 **9**

e d'ogn' intorn' è'l gri - do e d'ogn' in - tor - no è'l gri - do

58

e di Gnac - cha-re E di Gnac-char' e Tambur - ri

62

e streppi - to - se Trom - be e streppi - tos' _____ e strep - pi - to - se Trom-be

66

Sù sù sol - da - ti à l'ert à l'er - ta che la Vit - to - ria che

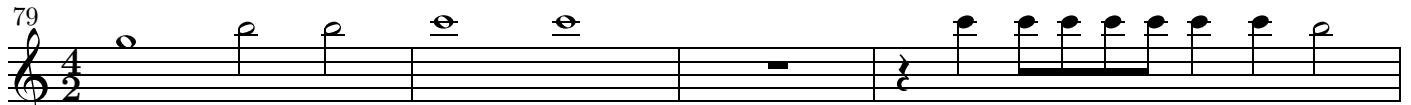
70


la Vit - to - ria è cer - ta Fa-ri-ra-ri-ra ron - fa Fa-ri-ra-ri-ra ron -


74

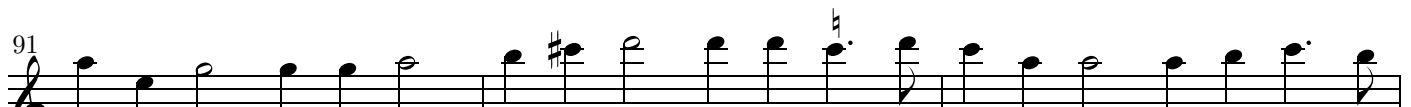
sa Fa-ri-ra-ri-ra ron - fa fan _____ fan fan fan fan fan fan fai - ne.

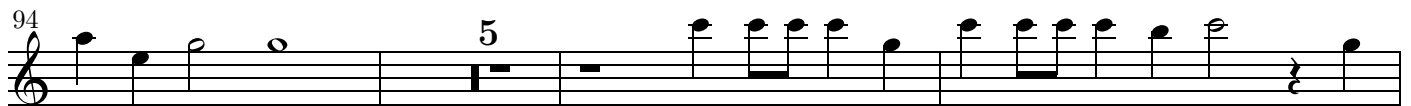
Battaglia A 10.
Seconda Parte


79 
Da l'al - tra par - te cor - re Co suoi compagn' in - nan -


83 
ti cor - re Co suoi com - pagn' in - nan - ti

88 
Ve - di là Ve - di là ve - di là com - pa - ri - re La _____ Spe - ranz'

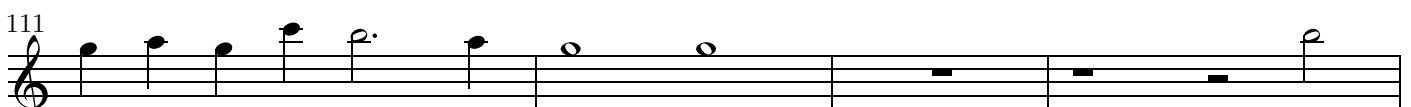
91 
e l'Ar - dir' e l'Ar - dir' e l'Ar - di - re Che son del Fa - re - tra - to Se - gua -

94 
- ci fi - di Fan - fa - ri - ra - ron Fan - fa - ri - ra - ron - fan Fan -

102 
fan - fan - fan - fan - fan - fan - fa - ri - ra Fan - fan - fa - - ri - ra fa - ri -

105 
ra - ron - fai - ne Fa - ri - ra - fan - fa - ri - ra fa - ri - ra - fan - fa Tut - ti à gli sten -

108 
dar - di E non sia - te tar - - di E non sia - te tar - di Dob - be

111 
dob - be dob - be dob - be dob - be Che

115

gl'A - uer - sa - ri ven - ga - no ven - ga - no ven - ga - no ga - gliar - di

118

E la vil tur - ba sfa - ce E la vil tur -

123

ba E la vil tur - - ba sfa - - ce

132

Le - ga - ti son con la ca - te - na d'o - - -

135

ro L'Or - go - - glio l'Or - go - glio l'Orgo - glio l'Or - go - -

138

glio corr' e fre - - me corr' e fre - - me

141

Vc - cid' urt' & ab - ba - te in - fran - ge e pre - me


144


in - frang' e pre - - me Vc - ci - - de

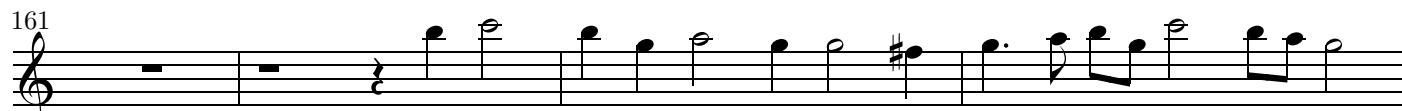
147


urt' & ab - bat - te in - frang' e pre - - me.

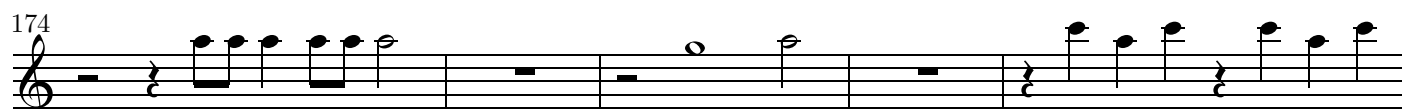
Battaglia A 10.
Terza Parte

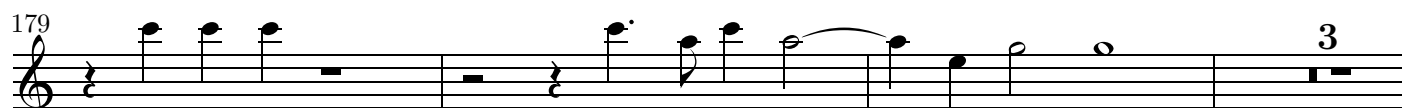
151 
Che cing' il crin di gi - gli d'o - ro Che

157 
cing' il crin di gi - gli d'o - ro E in fin da l'Ind' al Mo - ro


161 
Per ar - co Per ar - co o - pra le _____ ci - -


165 
- glia Et ____ à gran me-ra - ui - glia Gli nemi-ci d'Amor saett' e piglia


174 
Gli nemi - ci d'Amor Sguar - di Lu-sin-ghe Lu-sin-ghe

179 
Lu - sin - ghe At - ti leg - gia - - - dri

185 
Son' al nemi - co stuol Son' al nemi - co stuol ar - mi _____ pun - gen -


189 
ti Cu - re So - spi - ri Ghiac - cio

194 
mar - ti - ri e fin - - ti sguar - - di Son' à l'a-mi - che

199 
sgua - dre ac - cu - ti dar - - di ac - cu - ti dar - - - di.

Battaglia A 10.
Quarta & vlt[ima] Parte


203



Grid' il co-rag-gio s'Ar-di - re A-doss' adoss' a-doss' innant' innant' innant' in-

Detailed description: Musical staff for measure 203. The staff is in treble clef with a 5/4 time signature. It begins with a fermata over a whole note G4, followed by a sequence of eighth and sixteenth notes. The lyrics are: "Grid' il co-rag-gio s'Ar-di - re A-doss' adoss' a-doss' innant' innant' innant' in-".

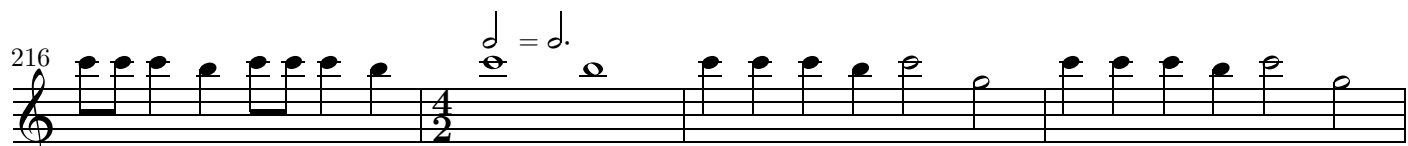
211



nan - ti O ar - di-ti Aman - ti o ar - di-ti A - man - ti Ser - ra ser - ra

Detailed description: Musical staff for measure 211. The staff is in treble clef with a 6/4 time signature. It features a sequence of eighth notes followed by a half note. The lyrics are: "nan - ti O ar - di-ti Aman - ti o ar - di-ti A - man - ti Ser - ra ser - ra".

216



serra ser - ra serra ser - ra ser - ra Tutt' à la bat-ta - glia Tutt' à la bat-ta - glia

Detailed description: Musical staff for measure 216. The staff is in treble clef with a 4/2 time signature. It features a sequence of eighth notes followed by a half note. The lyrics are: "serra ser - ra serra ser - ra ser - ra Tutt' à la bat-ta - glia Tutt' à la bat-ta - glia".

220



à la bat - ta - glia à la bat - ta - glia E'l ne -

Detailed description: Musical staff for measure 220. The staff is in treble clef with a 4/2 time signature. It features a sequence of eighth notes followed by a half note. The lyrics are: "à la bat - ta - glia à la bat - ta - glia E'l ne -".

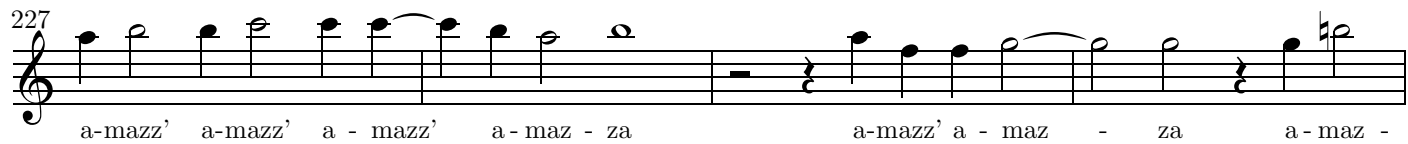
223



mi - co E'l ne-mi - co e'l ne - mi-co as - sa - glia A-mazz'

Detailed description: Musical staff for measure 223. The staff is in treble clef with a 4/2 time signature. It features a sequence of eighth notes followed by a half note. The lyrics are: "mi - co E'l ne-mi - co e'l ne - mi-co as - sa - glia A-mazz'".

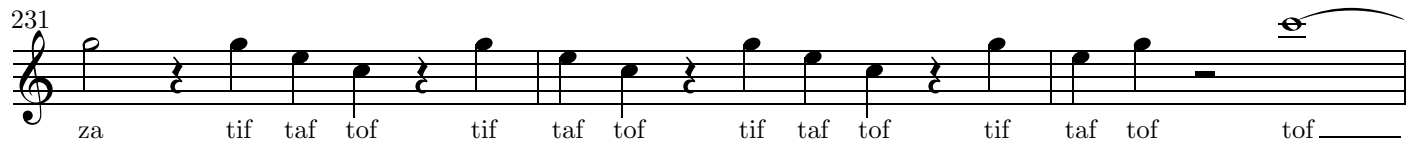
227



a-mazz' a-mazz' a - mazz' a - maz - za a-mazz' a - maz - za a - maz -

Detailed description: Musical staff for measure 227. The staff is in treble clef with a 4/2 time signature. It features a sequence of eighth notes followed by a half note. The lyrics are: "a-mazz' a-mazz' a - mazz' a - maz - za a-mazz' a - maz - za a - maz -".

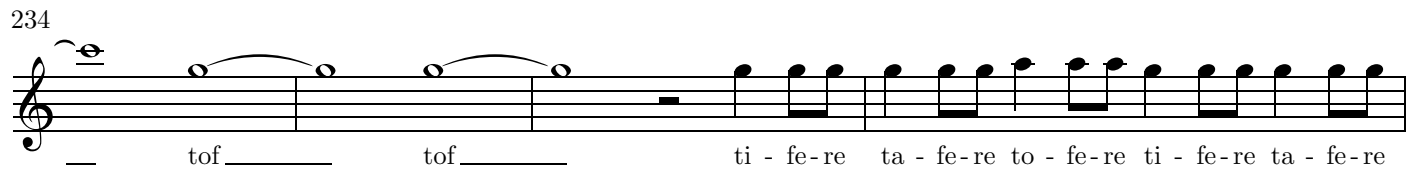
231



za tif taf tof tif taf tof tif taf tof tif taf tof tof

Detailed description: Musical staff for measure 231. The staff is in treble clef with a 4/2 time signature. It features a sequence of eighth notes followed by a half note. The lyrics are: "za tif taf tof tif taf tof tif taf tof tif taf tof tof".

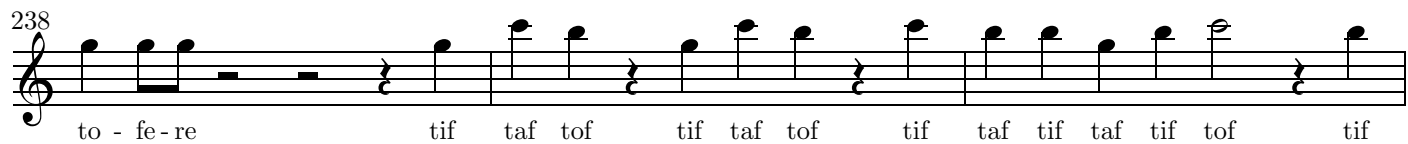
234



tof ti - fe-re ta - fe-re to - fe-re ti - fe-re ta - fe-re

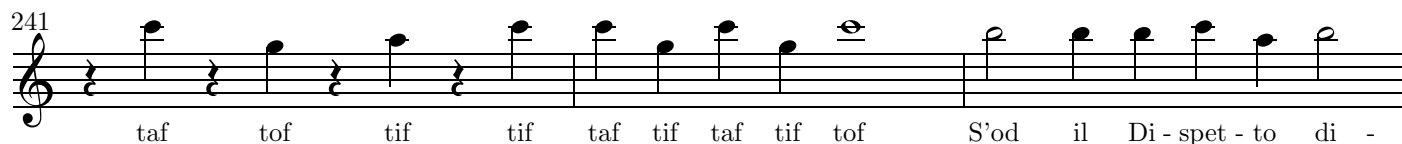
Detailed description: Musical staff for measure 234. The staff is in treble clef with a 4/2 time signature. It features a sequence of eighth notes followed by a half note. The lyrics are: "tof ti - fe-re ta - fe-re to - fe-re ti - fe-re ta - fe-re".

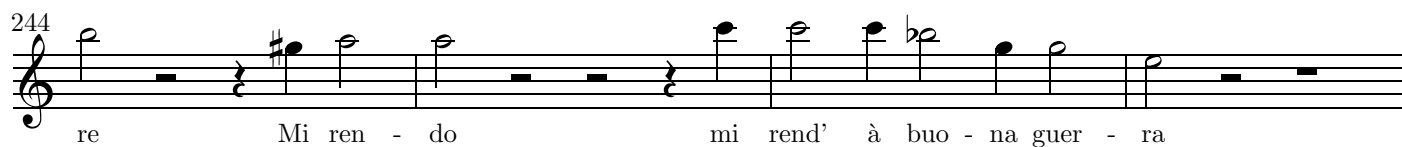
238

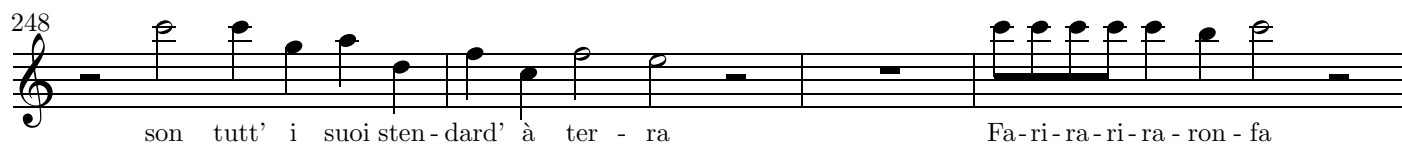


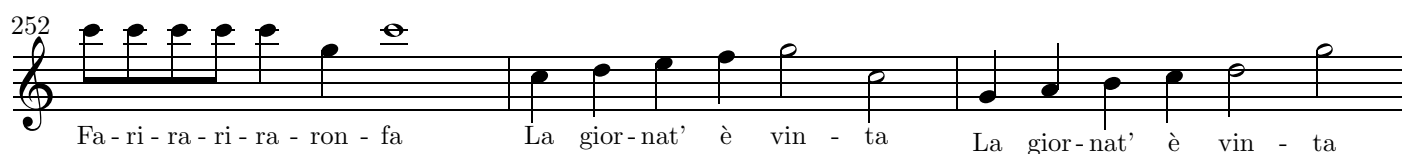
to - fe-re tif taf tof tif taf tof tif taf tif taf tif tof tif

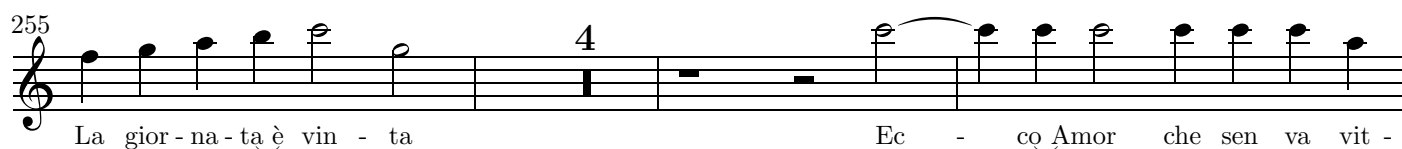
Detailed description: Musical staff for measure 238. The staff is in treble clef with a 4/2 time signature. It features a sequence of eighth notes followed by a half note. The lyrics are: "to - fe-re tif taf tof tif taf tof tif taf tif taf tif tof tif".

241

taf tof tif tif taf tif taf tif tof S'od il Di - spet - to di -

244

re Mi ren - do mi rend' à buo - na guer - ra

248

son tutt' i suoi sten - dard' à ter - ra Fa-ri-ra-ri-ra - ron - fa

252

Fa-ri-ra-ri-ra - ron - fa La gior-nat' è vin - ta La gior-nat' è vin - ta

255

La gior-na-ta è vin - ta Ec - co Amor che sen va vit -

262

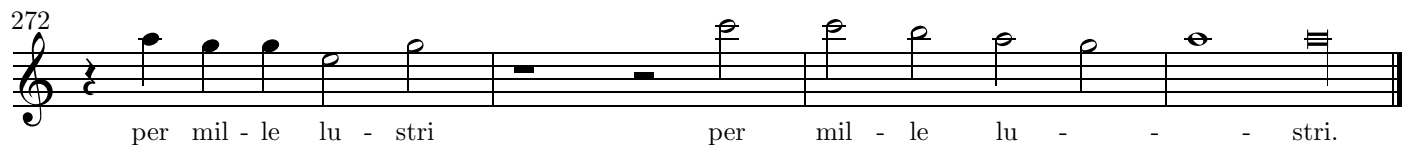
to - ri - o - so che sen va vit-to-ri - o - so che sen va vit-to-ri - o - so

265

Ec - co ec - co gli A-man - ti Il - lu - - stri Vi -

268

- ua Far-ne-si e Pij Far-ne - si e Pi - j per mil - le lu - stri

272

per mil - le lu - stri per mil - le lu - - - stri.