

Schraner No: II.
9. Fach 14. Lage.

co. W. Oboi, Viola
e Basso. 4. St.
del Sig. Fasch.



Musica

2423

Or 11







Sonata

Oboe Primo

Andante 















Allegro 

pia. 

forte 







piano 

1

Mus. 2423-Q-11

2
Sächs.
Landes-
Bibl.

Handwritten musical score on aged paper, featuring 14 staves of music in a single system. The notation includes treble clefs, a key signature of two flats (B-flat and E-flat), and a 3/4 time signature. The music consists of a complex, multi-voice texture with frequent sixteenth-note passages and slurs. Dynamic markings 'forte' and 'piano' are written in cursive throughout the score. The paper shows signs of age, including foxing and a small red stain on the eighth staff.

Voltate

C. 284

3

2

Largo 3/4 6.

The Largo section consists of six staves of music. It begins with a treble clef, a key signature of two flats (B-flat and E-flat), and a 3/4 time signature. A repeat sign with a '6' above it indicates a six-measure repeat. The music features a variety of note values, including eighth and sixteenth notes, and rests. The first staff contains the initial melodic line, while the subsequent staves provide harmonic accompaniment.

Allegro 3/4

forte *piano*

The Allegro section consists of ten staves of music. It begins with a treble clef, a key signature of two flats, and a 3/4 time signature. The music is characterized by a more active and rhythmic feel compared to the Largo section. Dynamic markings include *forte* and *piano*. The first staff is marked *forte*, and the second staff is marked *piano*. The music features a mix of eighth and sixteenth notes, often beamed together in groups. The section concludes with a double bar line.

§ 4

piano
forte
piano *forte*
piano *forte*
forte *piano* *forte*
piano
forte *piano* *forte*
piano
forte.

Sonata

Oboe Secondo

Andante C ^{2.}

Allegro $\frac{2}{4}$ *piano* *forte*

Mus. 2423-Q-11

6



piano

Handwritten musical score on aged paper, featuring 14 staves of music. The notation includes treble clefs, a key signature of two flats, and dynamic markings such as *forte* and *piano*. The music features complex rhythmic patterns with many beamed notes. The word *Voltate* is written at the bottom right of the page.

Largo 3/4

Allegro 3/4

piano *forte*

piano *forte*

piano forte

piano

forte

A handwritten musical score on 13 staves. The notation includes treble clefs, a key signature of two flats (B-flat and E-flat), and a common time signature. The music features a variety of rhythmic patterns, including eighth and sixteenth notes, and rests. Dynamic markings are written in cursive: *piano* appears on the 3rd, 5th, 8th, and 13th staves; *forte* appears on the 3rd, 5th, 7th, 9th, and 13th staves. The score concludes with a double bar line, a repeat sign, and a final flourish.

Handwritten signature or number, possibly 'C. 207'

Handwritten symbol or mark

Sonata

Basfeno

Andante

Allegro

piano *forte*

piano *forte* *piano* *forte*

Mus. 2423-Q-11

10



Handwritten musical score on aged paper, featuring multiple staves with notes, rests, and dynamic markings such as "piano" and "forte". The notation includes various rhythmic values and articulation marks. The score concludes with a double bar line on the final staff.

Voltate

Largo $\frac{3}{4}$ 12.

Allegro $\frac{3}{4}$

11

12

Handwritten musical score on aged paper, featuring ten staves of music. The notation includes various notes, rests, and dynamic markings such as *piano* and *forte*. The paper shows signs of age and wear.

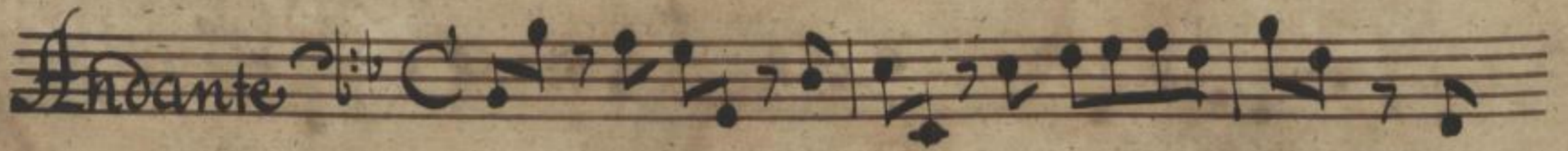
Car 204

73

AK

Sonata

Cembalo



73

Mus. 2423-Q-11

14



Voltate

Largo $\frac{3}{4}$

Allegro $\frac{3}{4}$

piano *forte*

piano *forte*

piano

piano *forte*

15

16

Handwritten musical score on aged paper, featuring ten staves of music. The notation includes various note values, rests, and dynamic markings such as *forte* and *piano*. The paper shows signs of age, including foxing and staining.