

Piella

Viola

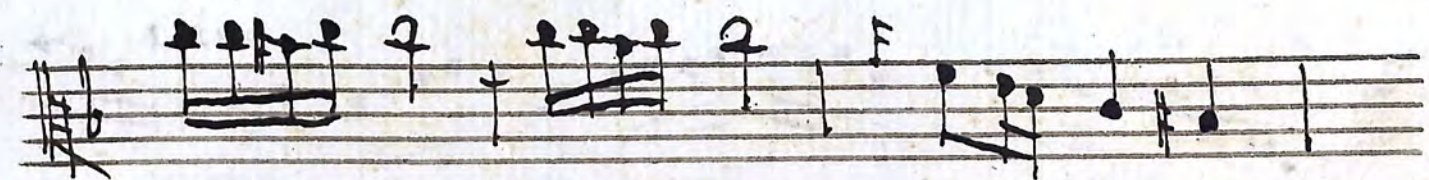
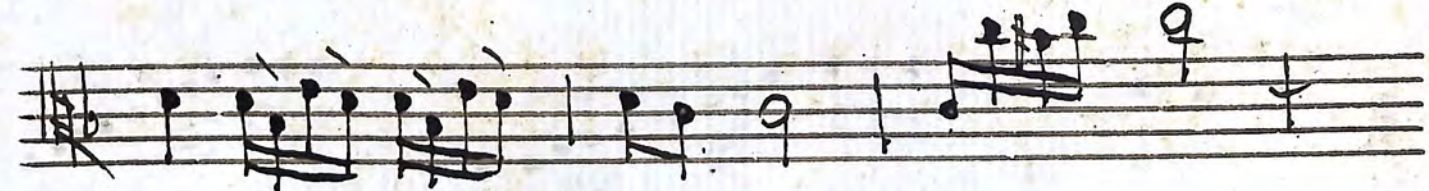
mod.to
Allegro

This image shows a handwritten musical score for a Viola part. The score is written on ten staves. The first staff begins with the tempo markings "mod.to" and "Allegro". The music is written in a treble clef with a key signature of one sharp (F#). The notation includes a variety of rhythmic values, including eighth and sixteenth notes, as well as complex chordal textures with many beamed notes. There are several slurs and accents throughout the piece. The paper shows signs of age, with some yellowing and foxing.

A handwritten musical score consisting of ten staves. The notation is dense and includes various rhythmic values, accidentals, and slurs. The first staff begins with a treble clef and a sharp sign. The music is written in a cursive, handwritten style. The paper shows signs of age, including yellowing and foxing.

Andante Segue

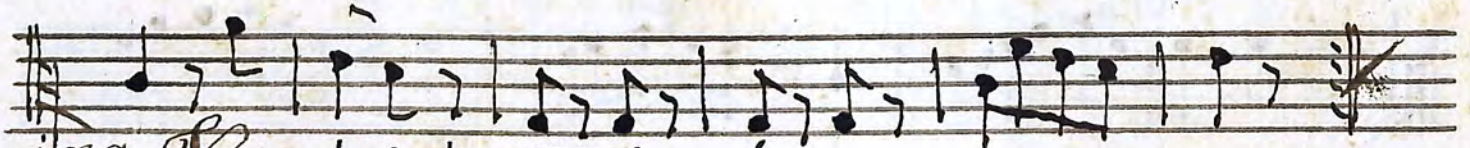
Andante $\frac{3}{4}$



A handwritten musical score consisting of ten staves. The notation is in a single system, likely for a single melodic line. The first staff begins with a treble clef and a 6/8 time signature. The music features a variety of note values, including eighth and sixteenth notes, and rests. There are several instances of beamed sixteenth notes, suggesting a rhythmic pattern. The score includes dynamic markings such as *ff* (fortissimo) and *f* (forte). The notation is somewhat dense, with many notes beamed together. The paper shows signs of age, including yellowing and foxing.

All: Segue

6
Allo
Finale



1mo Variazio Tacet

