

Handwritten musical score on a single staff system. The notation includes a treble clef, a key signature of one sharp (F#), and a common time signature (C). The music features a melodic line with various note values and rests, and a bass line with a steady rhythmic accompaniment. A dynamic marking 'pp.' is visible at the beginning of the system.

Handwritten musical score on a single staff system. The notation includes a treble clef, a key signature of one sharp (F#), and a common time signature (C). The music features a melodic line with various note values and rests, and a bass line with a steady rhythmic accompaniment. A dynamic marking 'pp.' is visible at the beginning of the system. The lyrics 'Die Reinfürst' sindt. was ist die Reinfürst' sindt. was ist die' are written below the staff.

Handwritten musical score on a single staff system. The notation includes a treble clef, a key signature of one sharp (F#), and a common time signature (C). The music features a melodic line with various note values and rests, and a bass line with a steady rhythmic accompaniment. A dynamic marking 'pp.' is visible at the beginning of the system. The lyrics 'Die Reinfürst' sindt. was ist die Reinfürst' sindt. was ist die' are written below the staff.

Handwritten musical score on a single staff system. The notation includes a treble clef, a key signature of one sharp (F#), and a common time signature (C). The music features a melodic line with various note values and rests, and a bass line with a steady rhythmic accompaniment. A dynamic marking 'pp.' is visible at the beginning of the system. The lyrics 'Die Reinfürst' sindt. was ist die Reinfürst' sindt. was ist die' are written below the staff.

Handwritten musical score on a single staff system. The notation includes a treble clef, a key signature of one sharp (F#), and a common time signature (C). The music features a melodic line with various note values and rests, and a bass line with a steady rhythmic accompaniment. A dynamic marking 'pp.' is visible at the beginning of the system. The lyrics 'Die Reinfürst' sindt. was ist die Reinfürst' sindt. was ist die' are written below the staff.

Handwritten musical score on a five-line staff. The notation includes treble clef, a key signature of one sharp (F#), and a common time signature (C). The music features a melody with eighth and sixteenth notes, often beamed together. A dynamic marking 'mp.' is visible. The lyrics 'Die Reinheit der Heiligkeit. was ist Geist, Heiligkeit. was ist Geist' are written in cursive below the staff.

Handwritten musical score on a five-line staff. The notation includes treble clef, a key signature of one sharp (F#), and a common time signature (C). The music features a melody with eighth and sixteenth notes, often beamed together. A dynamic marking 'mp.' is visible. The lyrics 'Ich auf die Erde auf die Erde' are written in cursive below the staff.

Handwritten musical score on a five-line staff. The notation includes treble clef, a key signature of one sharp (F#), and a common time signature (C). The music features a melody with eighth and sixteenth notes, often beamed together. A dynamic marking 'mp.' is visible. The lyrics 'Die Reinheit der Heiligkeit. was ist Geist, Heiligkeit. was ist Geist' are written in cursive below the staff.

Handwritten musical score on a five-line staff. The notation includes treble clef, a key signature of one sharp (F#), and a common time signature (C). The music features a melody with eighth and sixteenth notes, often beamed together. A dynamic marking 'mp.' is visible. The lyrics 'Ich auf die Erde auf die Erde' are written in cursive below the staff.

Handwritten musical score on a five-line staff. The notation includes treble clef, a key signature of one sharp (F#), and a common time signature (C). The music features a melody with eighth and sixteenth notes, often beamed together. A dynamic marking 'mp.' is visible. The lyrics 'Ich auf die Erde auf die Erde' are written in cursive below the staff.

Handwritten musical score on aged paper, featuring multiple staves of music and lyrics in German. The score is organized into three systems, each with a vocal line and a piano accompaniment line. The lyrics are written in a cursive hand, with some words appearing in italics. The paper shows signs of age, including yellowing and some staining.

System 1 (top):
Vocal line: *Wahrheit ist die Macht der Liebe*
Piano line: *Wahrheit ist die Macht der Liebe*

System 2 (middle):
Vocal line: *auf die Erde hin*
Piano line: *auf die Erde hin*

System 3 (bottom):
Vocal line: *auf die Erde hin*
Piano line: *auf die Erde hin*

Handwritten musical notation on five staves. The notation includes various rhythmic values, accidentals, and dynamic markings such as *tr* (trill) and *z* (zorn). The paper shows signs of age and wear.

Handwritten lyrics in a cursive script, likely German, positioned below the first system of musical notation.

Handwritten musical notation on five staves, continuing the piece. It features similar notation to the first system, with some *tr* markings.

Handwritten lyrics in a cursive script, positioned below the second system of musical notation.

Handwritten musical notation on five staves, continuing the piece. The notation is dense with notes and rests.

Handwritten lyrics in a cursive script, positioned below the third system of musical notation.

Handwritten musical score on aged paper, featuring multiple staves of music and lyrics in German. The notation includes various musical symbols such as clefs, notes, rests, and bar lines. The lyrics are written in a cursive hand, often appearing below the notes. The paper shows signs of age, including discoloration and some wear at the edges.

Handwritten musical score on a five-line staff. The notation includes treble clef, a key signature of one sharp (F#), and a common time signature (C). The lyrics are written in a cursive hand below the notes.

Handwritten lyrics:
Herrn mein Herrgott
Herrgott mein Herrgott
Herrgott mein Herrgott
Herrgott mein Herrgott
Herrgott mein Herrgott

Handwritten musical score on a five-line staff. The notation includes treble clef, a key signature of one sharp (F#), and a common time signature (C). The lyrics are written in a cursive hand below the notes.

Handwritten lyrics:
Herrgott mein Herrgott
Herrgott mein Herrgott
Herrgott mein Herrgott
Herrgott mein Herrgott
Herrgott mein Herrgott

Handwritten musical score on a five-line staff. The notation includes treble clef, a key signature of one sharp (F#), and a common time signature (C). The notes are written in a dense, rhythmic pattern.

Handwritten musical score on a five-line staff. The notation includes treble clef, a key signature of one sharp (F#), and a common time signature (C). The notes are written in a dense, rhythmic pattern.

Handwritten lyrics:
Herrgott mein Herrgott
Herrgott mein Herrgott
Herrgott mein Herrgott
Herrgott mein Herrgott
Herrgott mein Herrgott

Handwritten musical score for the first system, featuring a vocal line and a multi-measure rest.

Ich lob
Ich lob

Ich lob dich
Ich lob dich
Ich lob dich
Ich lob dich
Ich lob dich
Ich lob dich
Ich lob dich
Ich lob dich

Handwritten musical score for the second system, featuring a vocal line and a multi-measure rest.

Ich lob
Ich lob

Ich lob dich
Ich lob dich
Ich lob dich
Ich lob dich
Ich lob dich
Ich lob dich
Ich lob dich
Ich lob dich

Handwritten musical score for the third system, featuring a vocal line and a multi-measure rest.

Ich lob
Ich lob

Ich lob dich
Ich lob dich
Ich lob dich
Ich lob dich
Ich lob dich
Ich lob dich
Ich lob dich
Ich lob dich

Handwritten musical score on aged paper, featuring several staves. The top two staves contain dense musical notation, including notes, rests, and clefs. Below these are several empty staves, followed by a few staves with sparse notes and rests. The notation is in brown ink and includes various musical symbols such as clefs, notes, rests, and bar lines. The paper shows signs of age, with some staining and wear along the edges.

Gloria

171
54

Das ist zu, wie ich schon häufig
wandert.

a

2

Violin

Viola

Contra

Alto

Tenore

Bass

e

Continuo

In. 25. p. L.
1738.

Handwritten musical score on five staves. The notation includes various rhythmic values, accidentals, and dynamic markings. The piece concludes with the instruction "Capo" followed by a double bar line and a sharp sign.

Accomp.

Handwritten musical notation for the accompaniment section, featuring a series of chords and rhythmic patterns.

Choral.

Handwritten musical notation for the choral section, including a repeat sign and first/second endings.

Ich will befehlen

Handwritten musical notation for the vocal line, corresponding to the lyrics "Ich will befehlen".

Handwritten musical notation for the accompaniment, ending with a double bar line and a dynamic marking of *pp.*



Violino. 1. Conc: 8

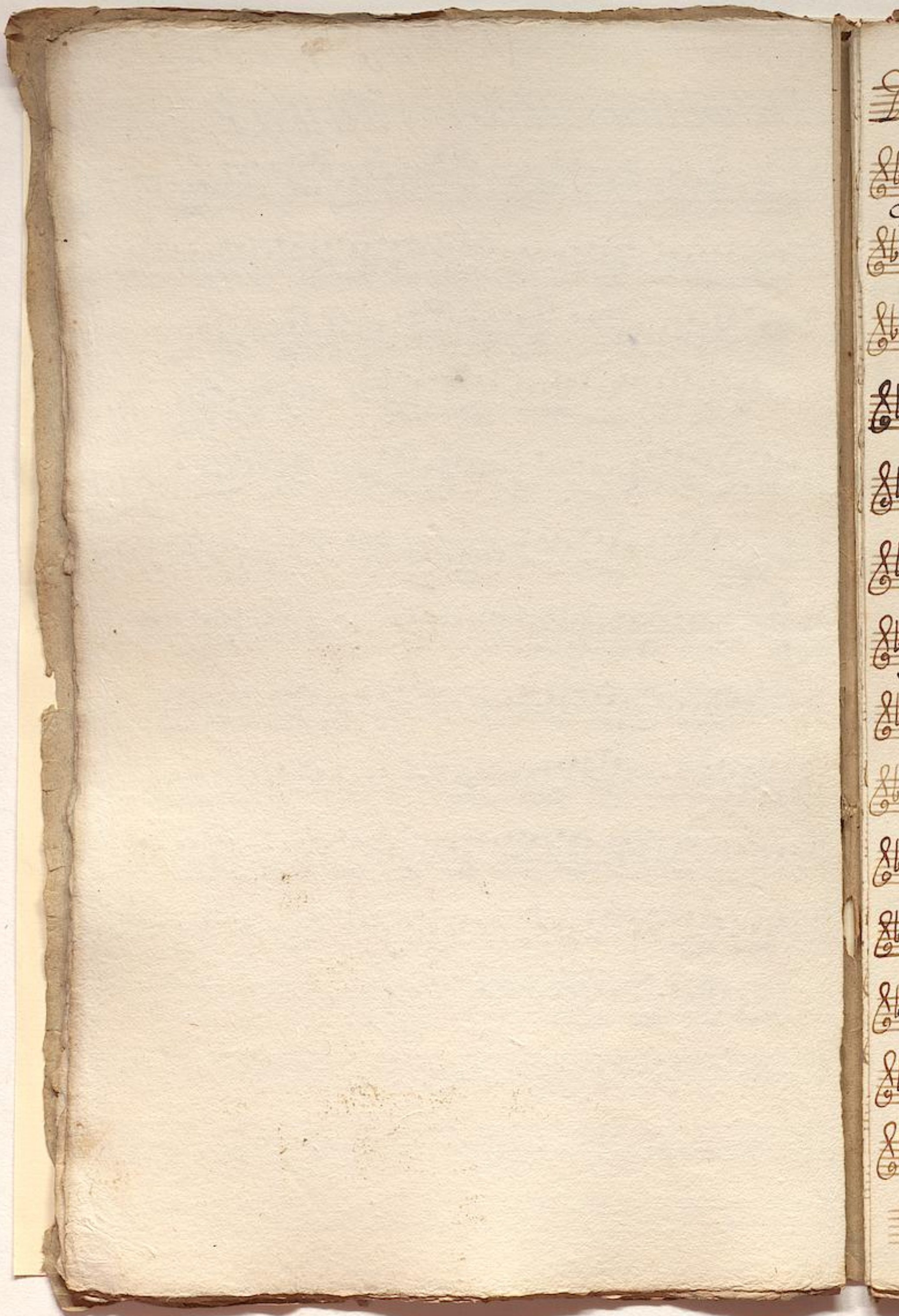
Dictum // Recitat // Aria // Recitat //

Opus sine quibus

2.

1.

Capo!



Violino. 2. Cōnc: 9

Dictum // Recital // Aria // Recital //

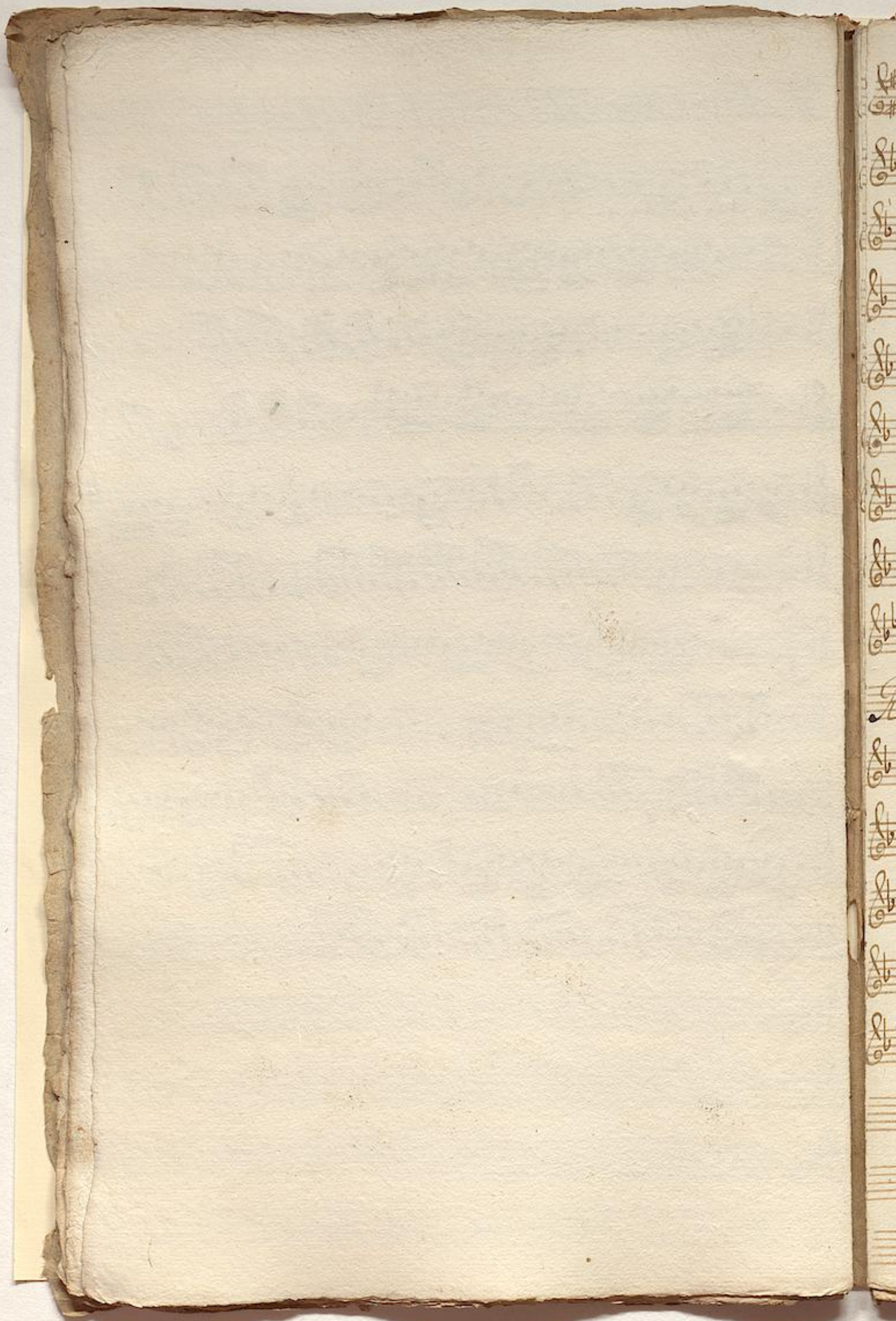


Officio S. Joannis Guislarum



Capo





1 p.

Handwritten musical score on aged paper, featuring ten staves. The notation includes treble clefs, a key signature of one sharp (F#), and various musical symbols such as notes, rests, and dynamic markings like "pp." and "frit.". The paper shows signs of age and wear.



Handwritten musical score on aged paper, featuring multiple staves of music. The notation includes treble clefs, a key signature of one sharp (F#), and various musical symbols such as notes, rests, and dynamic markings. The score is divided into sections labeled "Accomp." and "Choral.".

pp.
Accomp.

Choral.

Andante

pp.
f.
pp.
pp.
pp.
pp.
pp.
pp.
pp.

Violino. 2.

piano

die rechte Hand

die rechte Hand

Capo

Recitat

offen sein

Capo

pian.

The image shows a page of handwritten musical notation on aged, yellowed paper. The score consists of six staves. The first staff is a treble clef with a key signature of one sharp (F#) and a common time signature (C). It begins with the instruction *pian.* and contains a melodic line with various note values and rests. The second staff is also a treble clef with a key signature of one sharp and a common time signature. It is labeled *Accomp.* and *Choral piano.* and features a dense texture of sixteenth notes. The third staff is a treble clef with a key signature of one sharp and a common time signature, labeled *Forst id. b. f. f.* and contains a melodic line with dynamic markings *pp.* and *fort.*. The fourth staff is a treble clef with a key signature of one sharp and a common time signature, containing a melodic line with dynamic markings *fort.* and *pp.*. The fifth staff is a treble clef with a key signature of one sharp and a common time signature, containing a melodic line with dynamic markings *fort.* and *pp.*. The sixth staff is a treble clef with a key signature of one sharp and a common time signature, containing a melodic line with dynamic markings *pp.* and *fort.*. The paper shows signs of age, including foxing and some staining.



Viola.

forst. dim.
 Musical notation on a single staff, starting with a treble clef, a key signature of one sharp (F#), and a common time signature (C). The notation includes quarter and eighth notes with stems.

Recitat. // *st. e*

forst. dim.
 Musical notation on a single staff, continuing from the previous system. It includes dynamic markings like *pp.*

forst. dim.
 Musical notation on a single staff, featuring a series of eighth notes and some rests.

forst. dim.
 Musical notation on a single staff, continuing the melodic line.

Capo! Recitat.

forst. dim.
 Musical notation on a single staff, consisting of a series of eighth notes.

forst. dim.
 Musical notation on a single staff, continuing the rhythmic pattern.

forst. dim.
 Musical notation on a single staff, with some notes marked with first and second endings.

forst. dim.
 Musical notation on a single staff, continuing the sequence.

Capo! *forst. dim.*

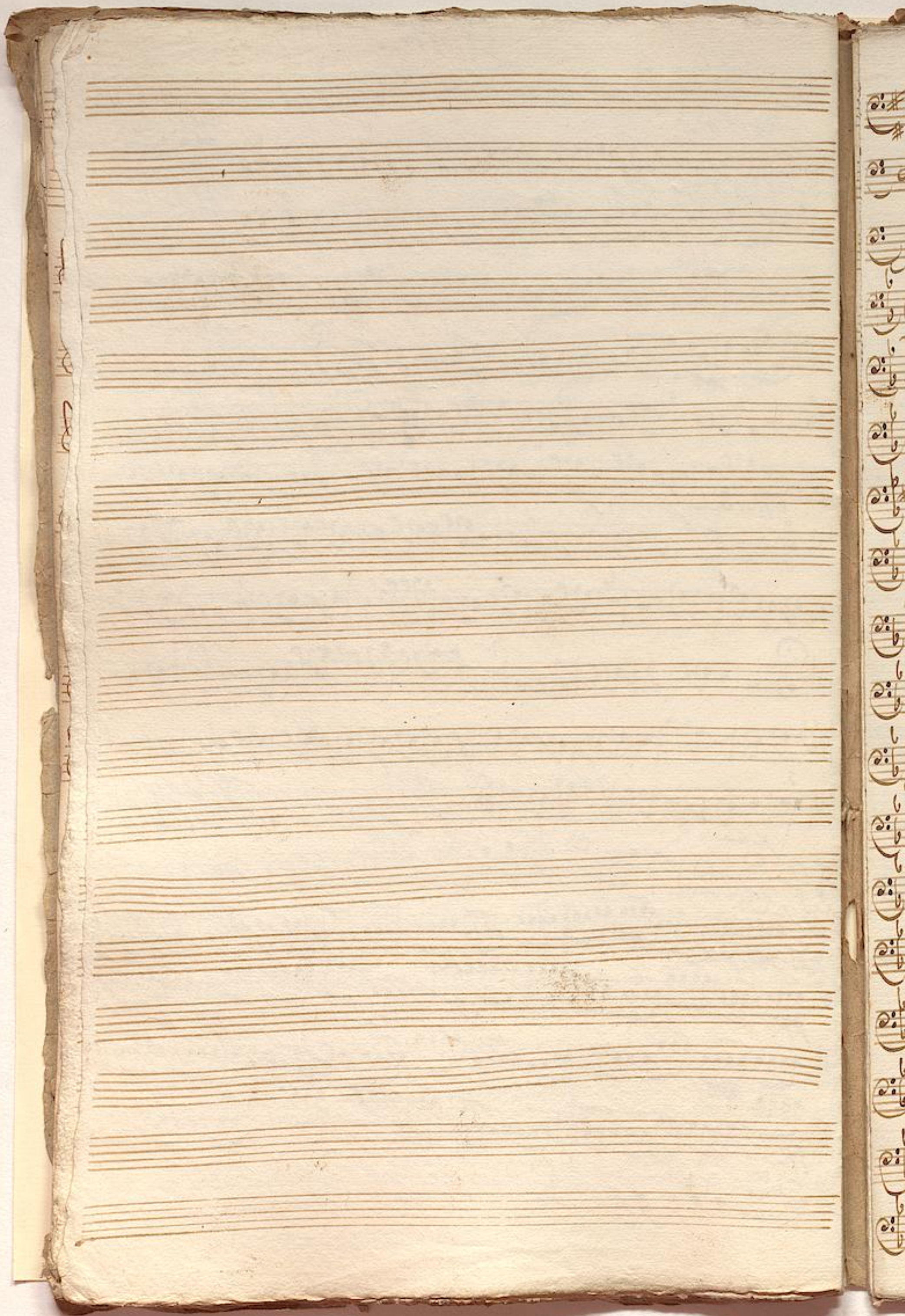
forst. dim.
 Musical notation on a single staff, starting with a treble clef and a key signature of one sharp.

forst. dim.
 Musical notation on a single staff, featuring a series of sixteenth notes.

forst. dim.
 Musical notation on a single staff, continuing the sixteenth-note pattern.

forst. dim.
 Musical notation on a single staff, with dynamic markings like *pp.* and *forst.*

forst. dim.
 Musical notation on a single staff, concluding the page with some final notes and a double bar line.



Violone.

piano

Handwritten musical notation on a five-line staff, starting with a treble clef and a key signature of one sharp (F#). The notes are mostly quarter and eighth notes.

Safet du.

Handwritten musical notation on a five-line staff, continuing the piece with various note values and rests.

Handwritten musical notation on a five-line staff, ending with a double bar line and a fermata.

Handwritten musical notation on a five-line staff, featuring a series of beamed eighth notes.

in Reueffelt Amud.

ff.

Handwritten musical notation on a five-line staff, continuing the melodic line.

Handwritten musical notation on a five-line staff, showing a change in dynamics and note values.

Handwritten musical notation on a five-line staff, with a *fort.* marking.

fort.

Handwritten musical notation on a five-line staff, continuing the piece.

Handwritten musical notation on a five-line staff, ending with a double bar line and a fermata.

Capot

Handwritten musical notation on a five-line staff, starting with a *Recit.* marking.

Recit.

Handwritten musical notation on a five-line staff, continuing the recitative.

Handwritten musical notation on a five-line staff, featuring a series of eighth notes.

opus dms gnaub.

Handwritten musical notation on a five-line staff, continuing the piece.

Handwritten musical notation on a five-line staff, showing a melodic phrase.

Handwritten musical notation on a five-line staff, continuing the melodic line.

Handwritten musical notation on a five-line staff, continuing the piece.

Handwritten musical notation on a five-line staff, continuing the piece.

Handwritten musical notation on a five-line staff, ending with a double bar line and a fermata.

Capot

Accomp: piano

Thral. 2

J. M. u. l. C. r. o. s. s. e. p.

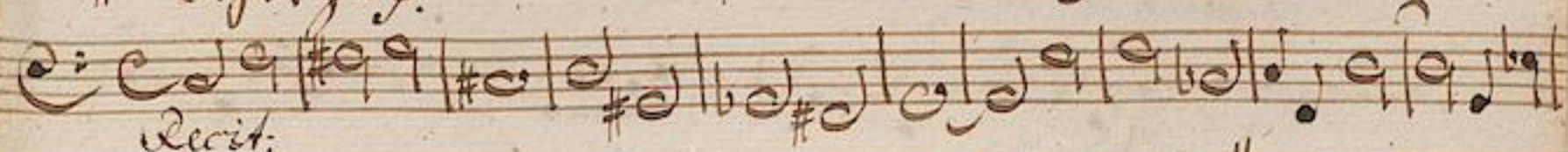
1. pp.

Violine:

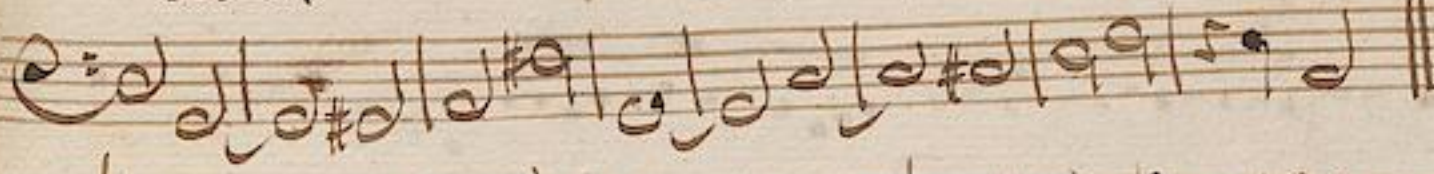
piano.



Sofist



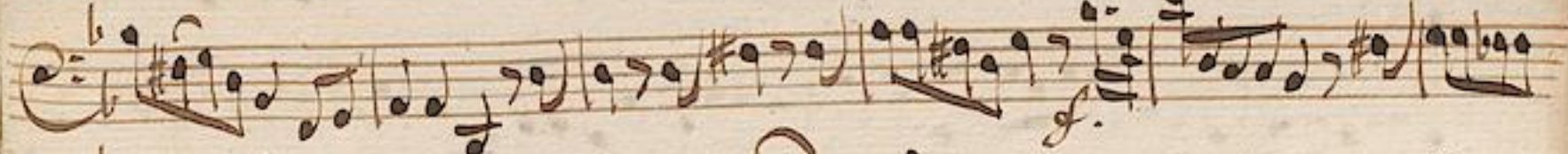
Recit:



Die Klügheit

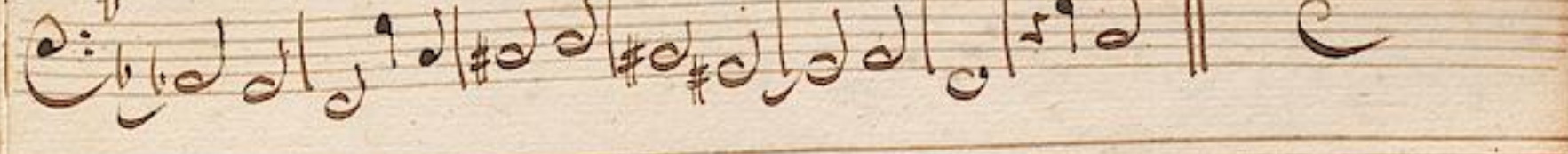
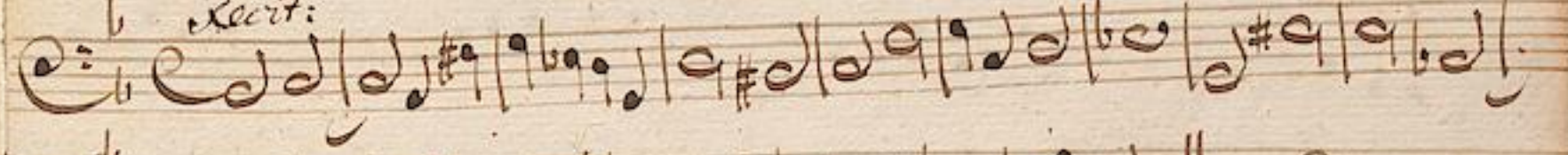


pp.



Coda

Recit:



volti.

6
Offertorium quatuor.

Handwritten musical notation on ten staves, featuring various rhythmic values and clefs.

Viol. accomp.

Da Capo

Choral.

Josephsbeschluss

Handwritten musical notation for the choral section, including a double bar line and a final flourish.

Canto.

Langmuß.
16

Dictum

Zur bösen Zeit, wann alle Geiül im Diswange sehn
 wann sie so gar an feilger Däcke sehn, wann selbst der Geiül gen Himmel
 schreyt und Gottes Lay diesem schlägt von Irren, so will off man sich
 Dindan Kunst, auf uns noch ärger seyn. Sagt an wandelt Gott solten nicht mit
 Layt, ja wost im Gläubiger folgt Himmel Jesu dath, er flücht nach Zion
 Hügel, also wir unter Jesu Gnaden flügel zu bösen Zeit Kopf

Disitz und Caystand sat
 die Längzeit schmüdt und wafrut Eristen schmüdt und wafrut
 Eristen sic ret - - tet sic ret - - tet auf zur bösen auf zur
 bösen Zeit die Längzeit schmüdt und wafrut Eristen schmüdt und wafrut
 Eristen sic ret - - tet sic ret - - tet auf zur bösen Zeit sic
 ret - - tet auf zur bösen Zeit Disitt Gottes Dindan swerfo
 Flagen swerfo Fla - gan so sefen sie wann ander Zagen
 so sefen sie wann ander Zagen in stiller Luf - - und

Capo ||
Dieserzeit in stiller Luft - - und dieserzeit

Recitat || Aria || Recitat ||

Ich in besesselt dir mein Lieb mit Noth
ich in mich ergohe ich sterb oder lebe
Jesus, bleib bei mir Jesus meine Seele
Jesus meine Zuversicht
meine Seele in deine Hände nim am letzten Feind

Dictum Recitat Aria Recitat Aria


 Komme meine todts Zeit, so hilf, o Jesu! daß ich
 mich in diese Thron's glücklich stülte. hilf mir zum
 Ding im letzten Breich, biß daß ich dich anklaget in
 deinem Reich erblide.


 Jesu! ich befehle dir mein Leib und Seele,
 dich mich ergebe, ich sterb oder lebe,
 Jesu! bleib bey mir: Jesu! meine Freund und Lust,
 meine Qual in deine Hände; nimm am letzten Ende.

1738.

Tenore.

Das ist zu, wie ihr vorfichtig wandelt, nicht als die Unwissenen,
 sondern als die Weisen; und fütet euch in die Zeit, denn
 es ist böse Zeit.

Recit // Aria // Recit // Aria

Recit //

2. 2. 1.
 Jesu, ich befehle dir mein Lieb und Leben,
 dich ich mich ergebe,
 ich sterb oder lebe,
 Jesu, bleib bei mir:
 Jesu, meine Zuversicht.
 meine Seele in deine Hände
 mich am letzten Ende.

Man



1738



Handwritten musical notation on a single staff.

Dir in Auf - - in Auf zu sagen Laß und Du - lo

Handwritten musical notation on a single staff.

sch - - - - - nun sitz, dort bey Dir, in Auf - in

Handwritten musical notation on a single staff.

Auf zu sagen.

Capo || Recitat //

Handwritten musical notation on a single staff.

Jesu ich befehle Dir mein Leib und Blut
ich gebe Dir mein Leben

Handwritten musical notation on a single staff.

Jesu bleib bey mir Jesu meine Zuversicht
Jesu meine Zuversicht

Handwritten musical notation on a single staff.

meine Zuversicht in deine Hände
nimm am heyligen Abend.