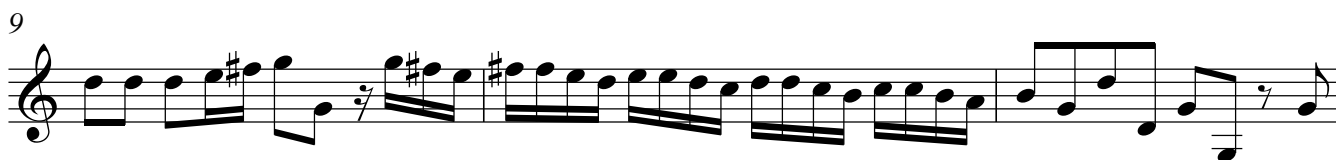


# Konzert C-Dur Nr. 1 für Oboe, Streicher und B.c.

Violine II

G. Valentini

**Allegro**



29



34



37



40



43



46



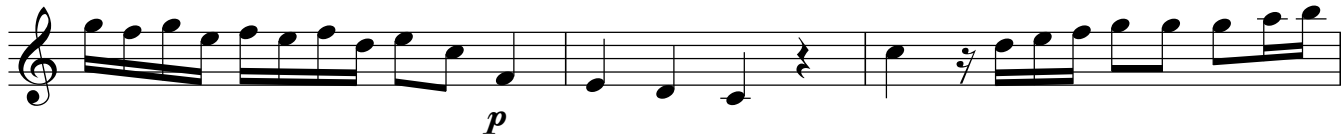
50



54



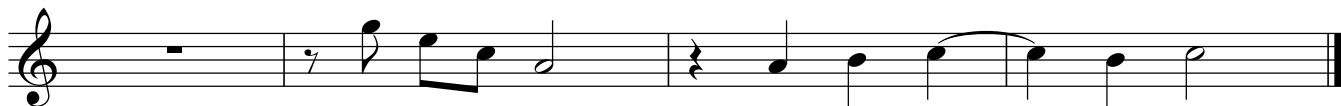
57



60



63



Largo

22

Musical notation for the Largo section, measures 22-23. Measure 22 is a whole rest. Measure 23 contains a quarter rest followed by a quarter note G4, an eighth note A4, a quarter note B4, and a quarter note C5. The second staff shows a whole note G3, a whole note F3, a whole note E3, a whole note D3, a whole note C3, a whole note B2, and a whole note A2. The notes G3, F3, and E3 are marked with a piano (p) dynamic.

Presto 10

Musical notation for the Presto section, measures 15-81. The section begins with a whole rest in measure 15. Measures 16-18 feature a sixteenth-note triplet pattern: G4, A4, B4. Measures 19-23 continue with similar patterns, including some notes with slurs. Measure 24 has a quarter rest followed by a quarter note G4, an eighth note A4, a quarter note B4, and a quarter note C5. Measures 25-28 show a quarter note G4, an eighth note A4, a quarter note B4, and a quarter note C5, with a '5' below the staff. Measures 29-32 feature a sixteenth-note triplet pattern: G4, A4, B4, with a '5' below the staff. Measures 33-36 show a sixteenth-note triplet pattern: G4, A4, B4, with a '2' below the staff. Measures 37-40 continue with similar patterns, with a '2' below the staff. Measure 41 is a whole rest. Measures 42-44 show a quarter note G4, an eighth note A4, a quarter note B4, and a quarter note C5. Measures 45-51 show a quarter note G4, an eighth note A4, a quarter note B4, and a quarter note C5, with a '5' below the staff. Measures 52-56 show a quarter note G4, an eighth note A4, a quarter note B4, and a quarter note C5, with a '5' below the staff. Measures 57-63 show a quarter note G4, an eighth note A4, a quarter note B4, and a quarter note C5, with a '5' below the staff. Measures 64-66 show a quarter note G4, an eighth note A4, a quarter note B4, and a quarter note C5, with a '5' below the staff. Measures 67-73 show a quarter note G4, an eighth note A4, a quarter note B4, and a quarter note C5, with a '5' below the staff. Measure 74 is a whole rest. Measures 75-79 show a quarter note G4, an eighth note A4, a quarter note B4, and a quarter note C5, with a '4' below the staff. Measure 80 is a whole rest. Measure 81 is a whole rest.

Violine II

81



83



7

92



3

100



104



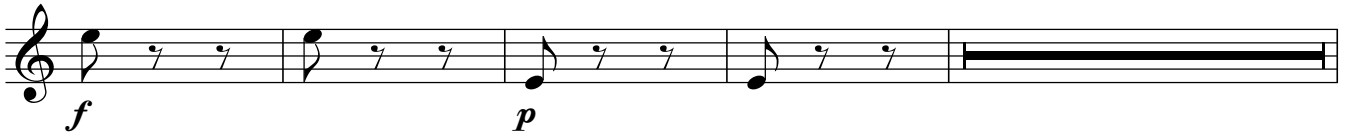
**Affettuoso**



11

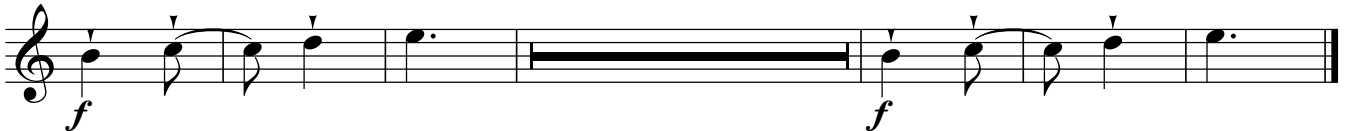


21



5

30



5