

VOLUNTARY in F (Z.716)

for Trumpet & Organ

Score (01':08")

Henry Purcell (1659 - 1695)

Arr. Michel Rondeau

Maestoso ♩ = 80

Trumpet in C

Organ

This system shows the first four measures of the score. The Trumpet in C part is in treble clef with a key signature of one flat (F major) and a common time signature (C). It has rests for the first three measures and enters in the fourth measure with a quarter note G4, followed by eighth notes A4, B4, and C5. The Organ part consists of two staves. The right hand starts with a whole note chord of F4 and C5 in the first measure, followed by a series of eighth notes in the second measure, and then a melodic line in the third and fourth measures. The left hand plays a simple bass line of quarter notes: F3, G3, A3, B3, C4, B3, A3, G3.

C Tpt.

Org.

This system covers measures 5 through 8. The C Trumpet part continues with eighth notes: D5, E5, F5, G5, F5, E5, D5, C5, B4, A4, G4, F4, E4, D4, C4. The Organ right hand features a complex texture with chords and moving lines, including a five-finger fingering (5) at the start. The left hand continues with a steady eighth-note bass line: C4, D4, E4, F4, G4, F4, E4, D4, C4, B3, A3, G3, F3, E3, D3, C3.

C Tpt.

Org.

This system covers measures 9 through 12. The C Trumpet part has a rest in the first measure, then enters with eighth notes: D4, E4, F4, G4, A4, B4, C5, B4, A4, G4, F4, E4, D4, C4. The Organ right hand plays a series of chords and moving lines, with a five-finger fingering (9) at the start. The left hand continues with a steady eighth-note bass line: C3, D3, E3, F3, G3, F3, E3, D3, C3, B2, A2, G2, F2, E2, D2, C2.

VOLUNTARY in F (Z.716) - Purcell - Score

C Tpt. ¹³

Org. ¹³

C Tpt. ¹⁷

Org. ¹⁷

C Tpt. ²¹

Org. ²¹

VOLUNTARY in F (Z.716)

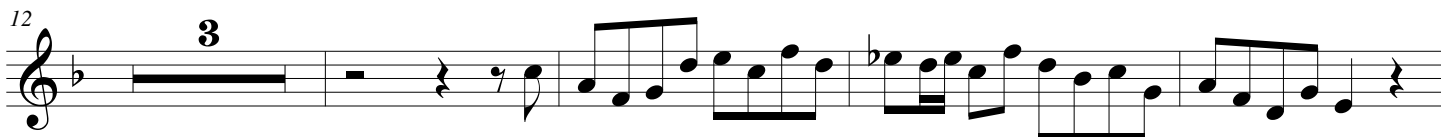
for Trumpet & Organ

Trumpet in C

Henry Purcell (1659 - 1695)

Arr. Michel Rondeau

Maestoso $\frac{3}{4} = 80$



VOLUNTARY in F (Z.716)

for Trumpet & Organ

Trumpet in Bb

Henry Purcell (1659 - 1695)

Arr. Michel Rondeau

Maestoso $\frac{1}{3} = 80$



VOLUNTARY in F (Z.716)

for Trumpet & Organ

Organ

Henry Purcell (1659 - 1695)

Arr. Michel Rondeau

Trumpet in C

Maestoso ♩ = 80

Organ

C Tpt.

Org.

C Tpt.

Org.

VOLUNTARY in F (Z.716) - Purcell - Organ

C Tpt.

Org.

13

C Tpt.

Org.

17

C Tpt.

Org.

21