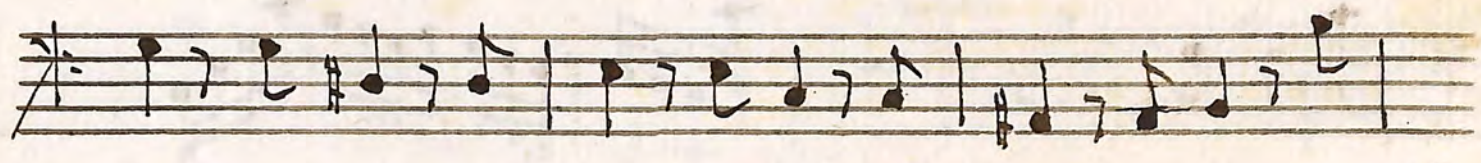
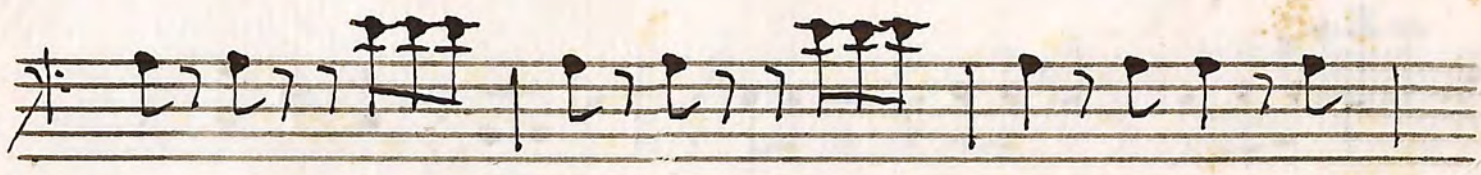
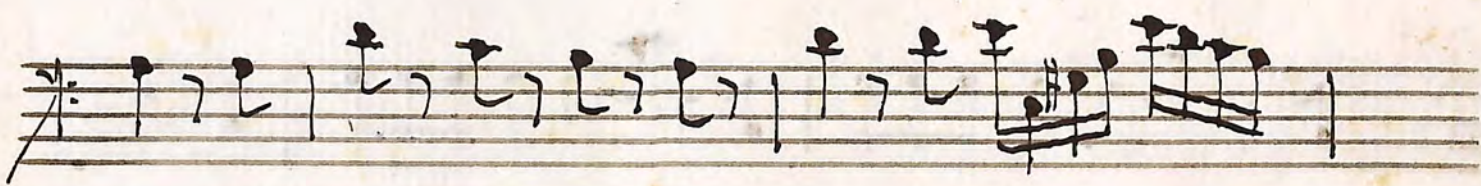
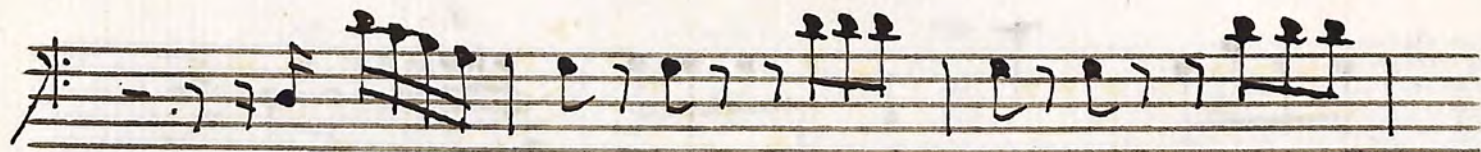


Basso

Basso

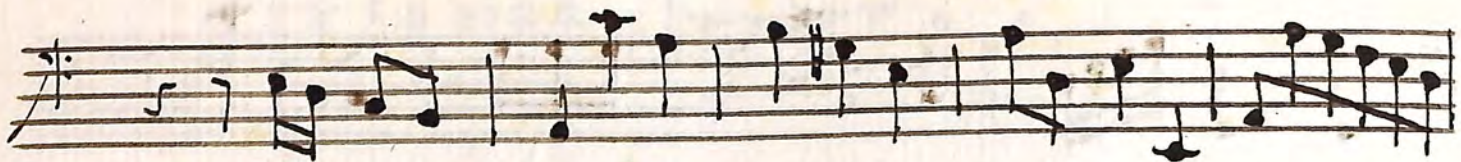
All^o moderato
Concerto

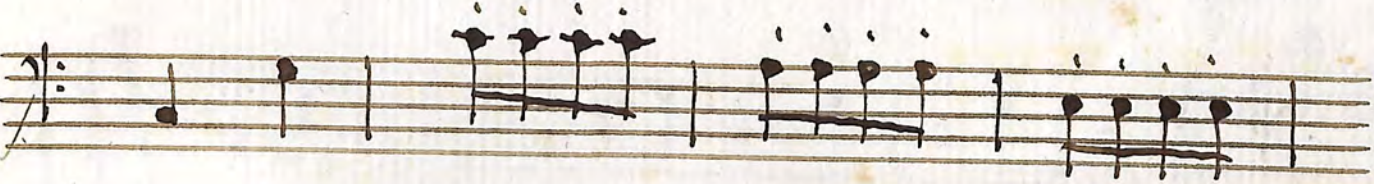
This page contains a handwritten musical score for Bass, consisting of ten staves. The music is written in a single system with a common time signature (C) and a key signature of one flat (B-flat). The tempo is marked 'All^o moderato' and the piece is identified as a 'Concerto'. The notation includes a variety of rhythmic values such as eighth, sixteenth, and thirty-second notes, as well as rests and slurs. Performance markings include accents, slurs, and dynamic markings like 'p' (piano) and 'm' (mezzo-forte). The score shows a complex melodic line with frequent sixteenth-note passages and some triplet-like figures. The handwriting is clear and professional, typical of a composer's manuscript.



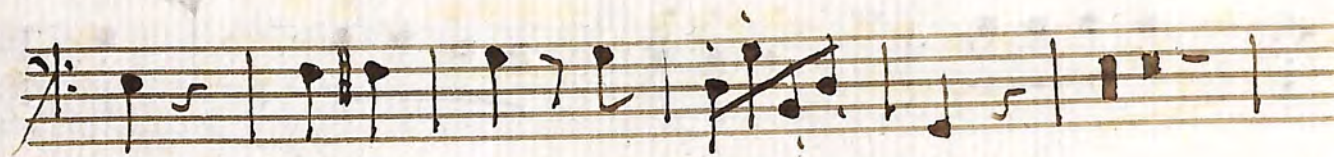
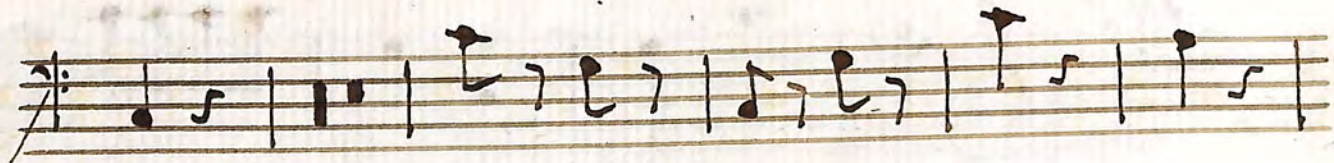
A handwritten musical score consisting of ten staves. The notation is in a single system, likely for a single melodic line. The music is written in a style characteristic of 18th or 19th-century manuscripts. The first staff begins with a treble clef and a key signature of one sharp (F#). The notation includes various note values, rests, and dynamic markings. A '6' is written above the fourth staff, possibly indicating a measure number or a specific performance instruction. The paper shows signs of age, including some staining and discoloration.

Andante $\frac{3}{4}$





Fori Subito



A handwritten musical score consisting of ten staves. The notation includes treble clefs, a key signature of one sharp (F#), and various rhythmic values such as eighth, sixteenth, and quarter notes. The first two staves feature complex rhythmic patterns with many beamed notes. The third staff has a more melodic line with some rests. The fourth and fifth staves continue with melodic and rhythmic patterns. The sixth and seventh staves show a mix of rhythmic and melodic elements. The eighth and ninth staves are primarily melodic. The tenth staff concludes with a double bar line, a treble clef, and a 'P.' marking.

