

Missa

Kyrie

Allegro

Johann Anton Reichenauer

Violoncello / Violone



5



9



12



16



20



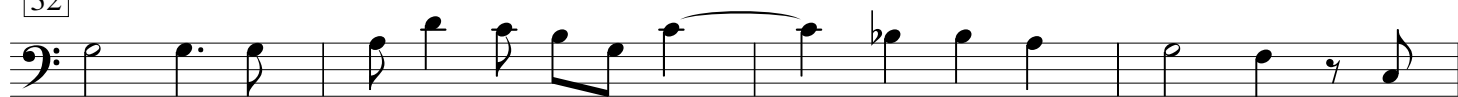
24



28



32



36



40



44



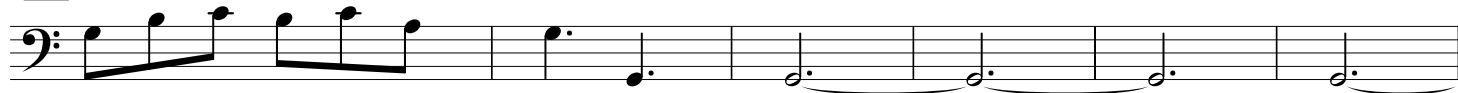
48

Christe

62



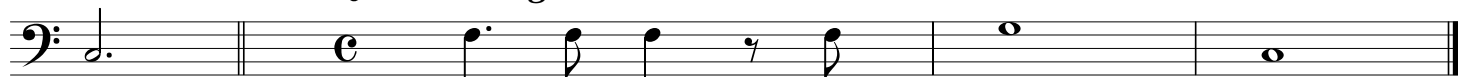
67



73



78

Kyrie Adagio

Gloria

Fresco Allegro

First musical staff in bass clef, common time signature. It begins with a quarter rest, followed by a series of eighth and sixteenth notes.

5

Second musical staff, starting at measure 5. It features a continuous eighth-note pattern.

9

Third musical staff, starting at measure 9. It contains eighth and sixteenth notes with some rests.

12

Fourth musical staff, starting at measure 12. It includes eighth notes and a sixteenth-note triplet.

15

Fifth musical staff, starting at measure 15. It features a mix of eighth and sixteenth notes.

18

Sixth musical staff, starting at measure 18. It contains eighth notes and a quarter note.

21

Seventh musical staff, starting at measure 21. It includes eighth notes and a sharp sign (#).

24

Eighth musical staff, starting at measure 24. It features eighth notes and quarter notes.

27

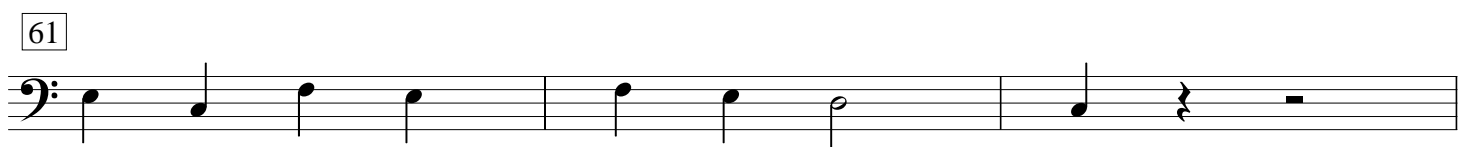
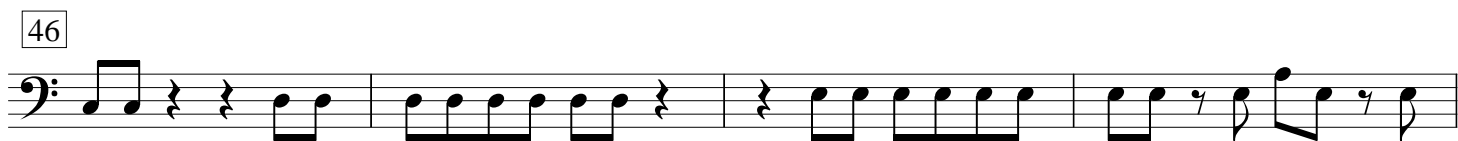
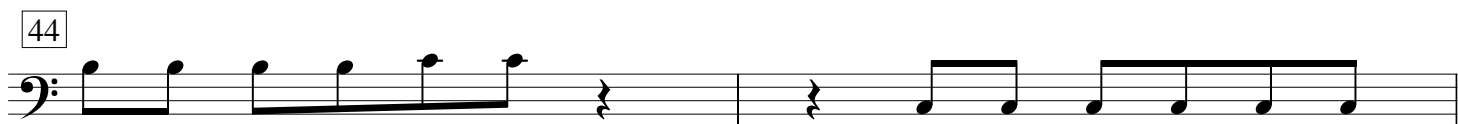
Ninth musical staff, starting at measure 27. It contains eighth notes and a sharp sign (#).

30

Tenth musical staff, starting at measure 30. It features eighth notes and a sharp sign (#).

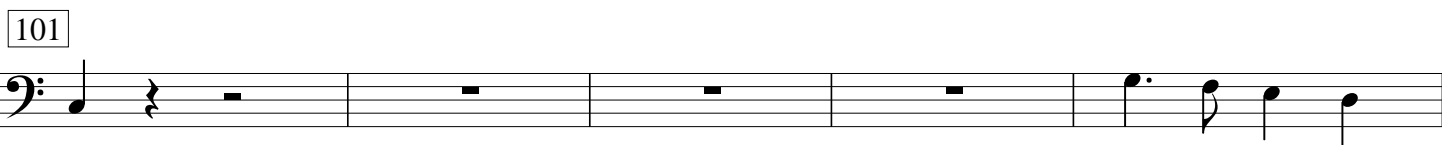
33

Eleventh musical staff, starting at measure 33. It contains eighth notes and a sharp sign (#).



Domine

75 *Allegro*



Qui tollis

120 *Adagio*



124



128



132

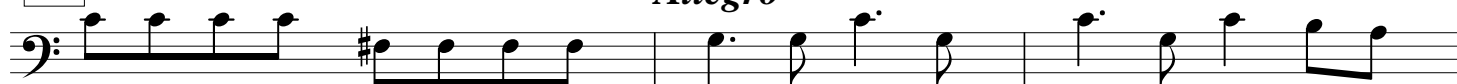


135



138

Allegro



141



144 *Adagio*



147



Cum Sancto

192 *Adagio**Presto*

6



203



209



215



221



226



231



237



244

