

SERVICE DES SPECTACLES ET CONCERTS  
DE LA VILLE DE GENÈVE

BIBLIOTHÈQUE MUSICALE

5, Promenade du Pin

*Le Mariage*

*aux*

*Santaines*

*Hautbois*

A 162



# Overture.

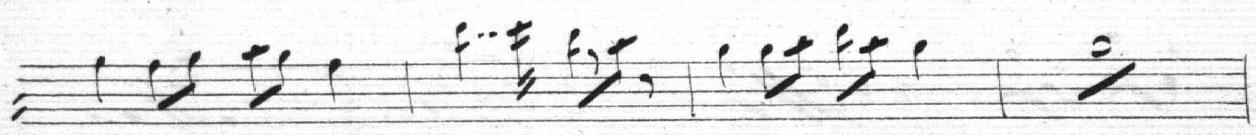
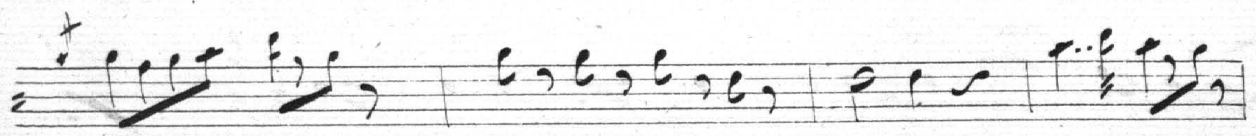
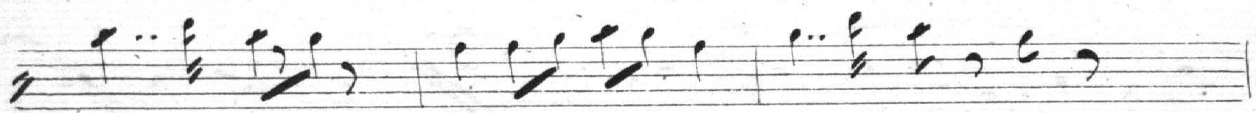
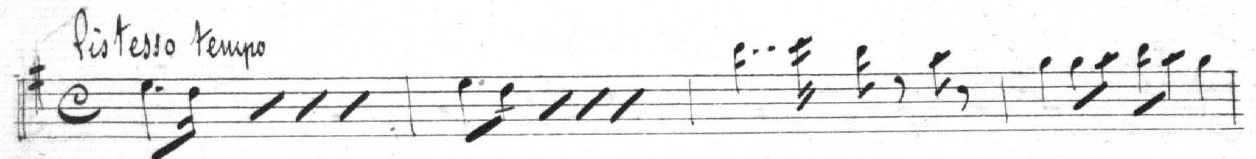
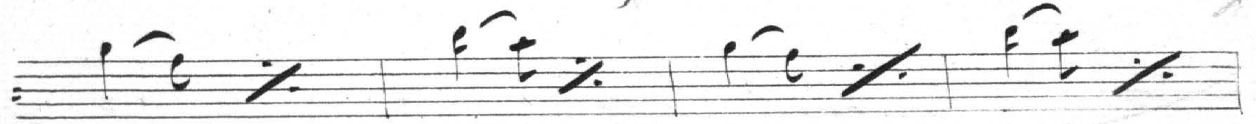
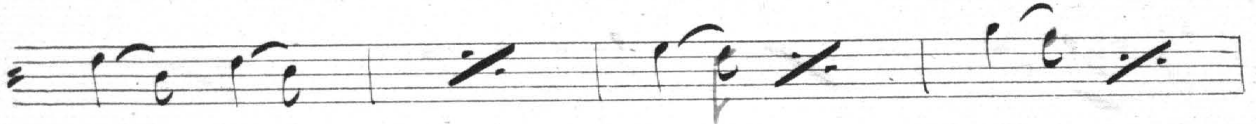
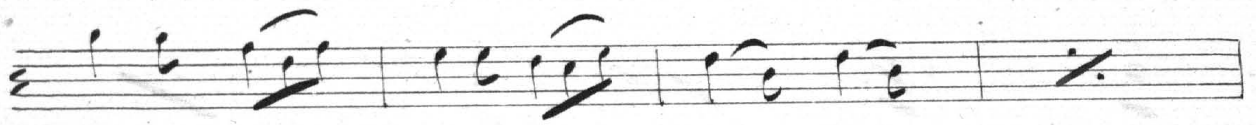
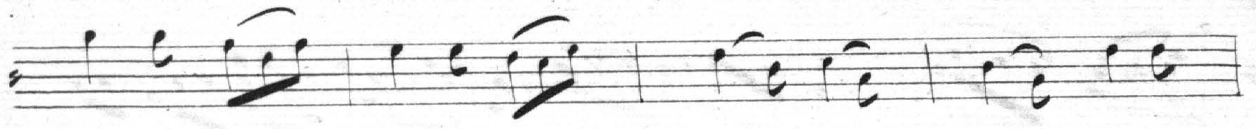
Wood: Marziale  $\text{G} \# \text{C}$   $\text{C}$   $\text{S}$   $\text{S}$

14

12

*Solo*

*listesso tempo*



Handwritten musical notation for the first system, consisting of four staves. The top staff features a melodic line with eighth and sixteenth notes, starting with a 'w' and ending with a 'D'. The lower three staves contain rhythmic accompaniment with various note values and rests.

*No. 1. Complets.*

Handwritten musical notation for the second system, consisting of eight staves. It includes dynamic markings such as "All. f", "Cantabile", and "fin", along with various musical symbols like slurs, accents, and repeat signs.

Handwritten musical score for the first system, consisting of four staves. The first staff has a treble clef and a 6/8 time signature. The second staff has a bass clef. The third and fourth staves have treble clefs. The music includes various notes, rests, and slurs.

*No. 2. Complets.*

Handwritten musical score for the second system, consisting of eight staves. The first staff has a treble clef and a 3/4 time signature. The second staff has a bass clef. The third and fourth staves have treble clefs. The fifth and sixth staves have bass clefs. The seventh and eighth staves have treble clefs. The word "Canto" is written above the second staff. The music includes various notes, rests, slurs, and dynamic markings.

Handwritten musical score for a six-staff piece. The first staff has a double bar line with the number '5' above it. The second staff has a double bar line with the number '10' above it. The music consists of various note values, rests, and slurs across six staves.

No. 3. Trio.

Handwritten musical score for a six-staff piece titled "No. 3. Trio". The first staff has a treble clef, a key signature of two sharps (F# and C#), and a 3/8 time signature. It features a double bar line with the number "6" above it. The second staff has a double bar line with the number "5" above it. The third staff has a double bar line with the number "8" above it. The fourth staff has a double bar line with the number "6" above it. The fifth staff has a double bar line with the number "3" above it. The music consists of various note values, rests, and slurs across six staves.

Handwritten musical notation on a single staff, featuring a series of notes and rests, ending with a double bar line and a sharp sign.

Handwritten musical notation on a single staff, including the instruction "c'est juste" and a double bar line with a "2" above it.

Handwritten musical notation on a single staff, including the instruction "100 Viol." and a double bar line with a "33" above it.

Handwritten musical notation on a single staff, featuring a series of notes and rests, ending with a double bar line and a "2" above it.

Handwritten musical notation on a single staff, featuring a series of notes and rests, ending with a double bar line and a "2" above it.

Handwritten musical notation on a single staff, featuring a series of notes and rests, ending with a double bar line and a "2" above it.

Handwritten musical notation on a single staff, including the instruction "sop" and a double bar line with a "15" above it.

Handwritten musical notation on a single staff, including the instruction "Viol. rig" and a double bar line with a "15" above it.

Handwritten musical notation on a single staff, including the instruction "Soubb." and a double bar line with a "15" above it.

Handwritten musical notation on a single staff, including the instruction "16a complet" and a double bar line with a "16" above it.

Handwritten musical notation on a single staff, featuring a series of notes and rests, ending with a double bar line and a "6" above it.

Handwritten musical notation on a single staff, featuring a series of notes and rests, ending with a double bar line and a "6" above it.



*powert: f*

*30 flua*

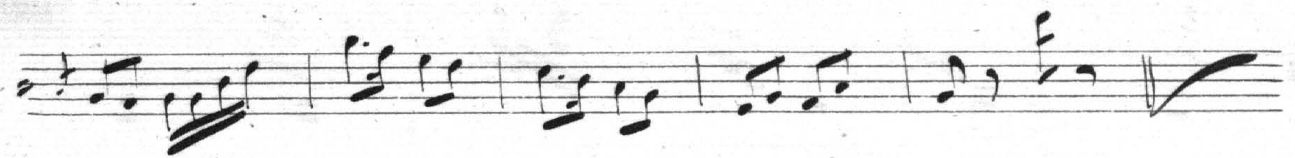
*hautb:*

*Animato*

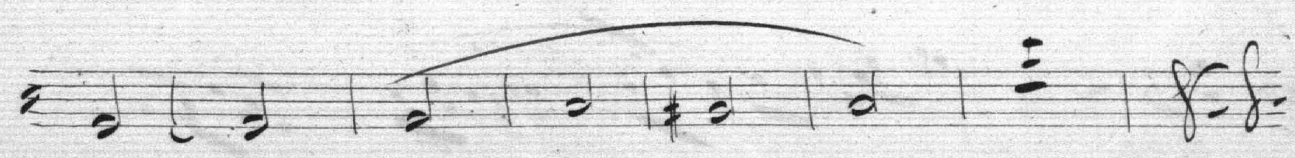
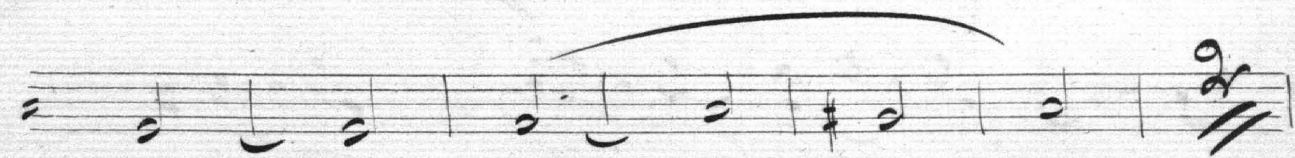
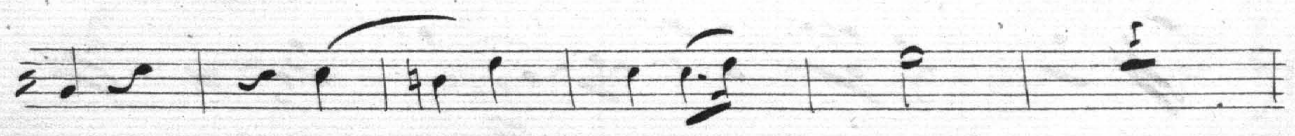
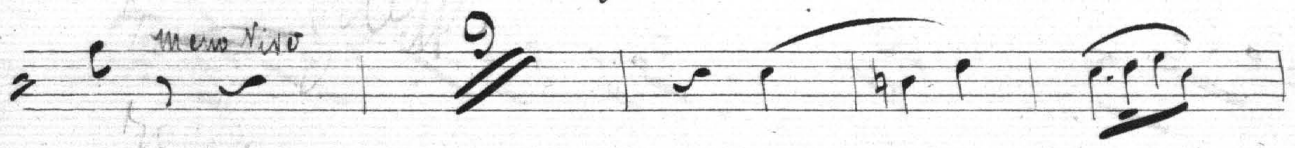
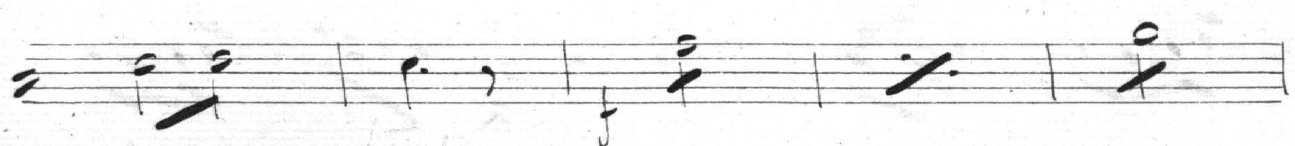
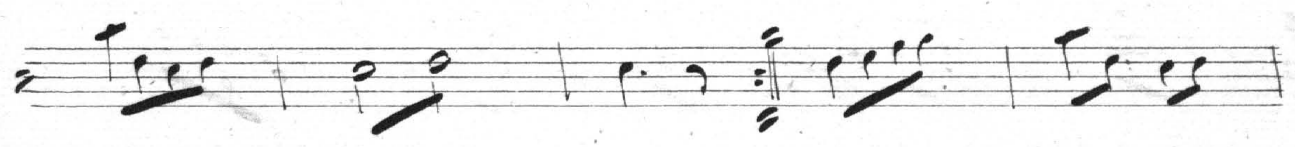
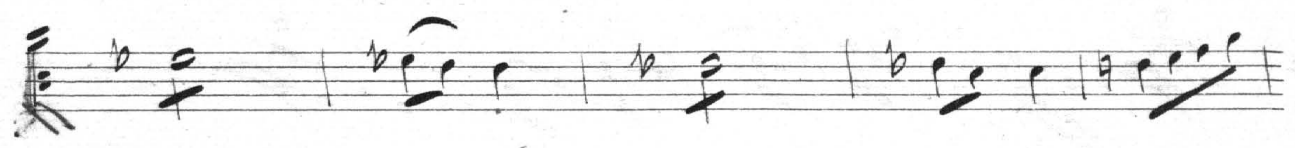
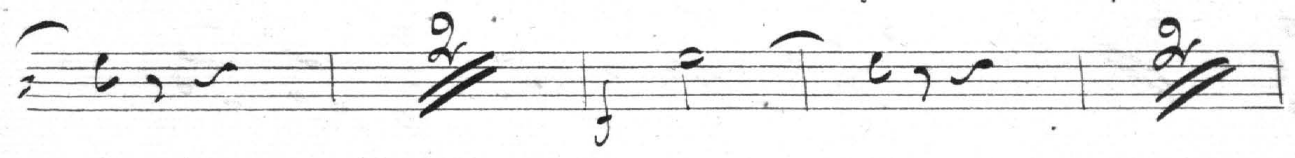
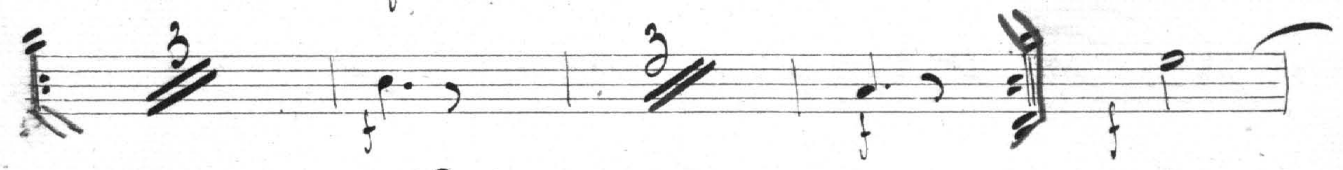
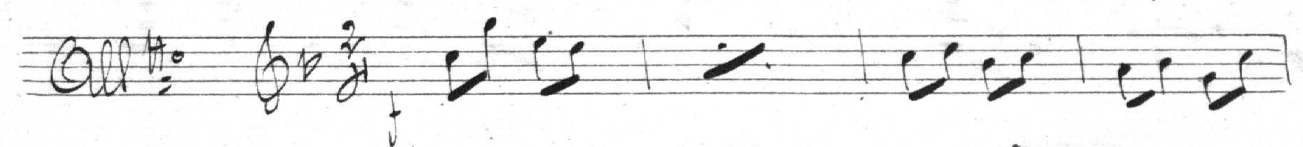
Handwritten musical notation on three staves. The first staff contains five measures of music with various chord symbols and a fermata over the fourth measure. The second staff contains five measures of music with various chord symbols and a fermata over the fifth measure. The third staff contains five measures of music with various chord symbols and a fermata over the fifth measure.

*Chanson*

Handwritten musical notation for "Chanson" on ten staves. The notation includes various musical symbols such as clefs, time signatures, and dynamic markings. The word "Canto" is written above the fifth staff, and the number "8" is written above the sixth staff. The notation is written in a cursive style.



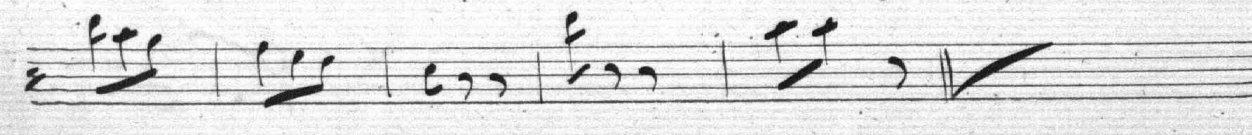
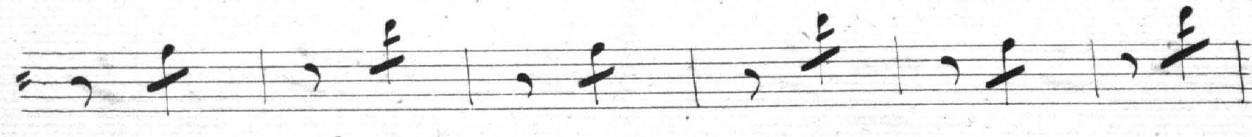
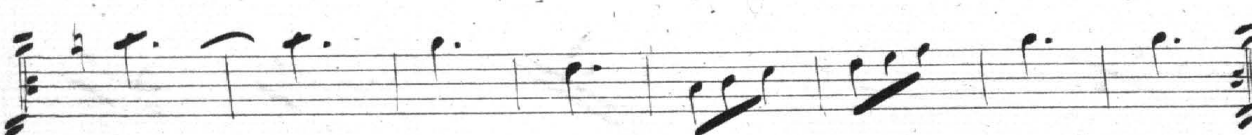
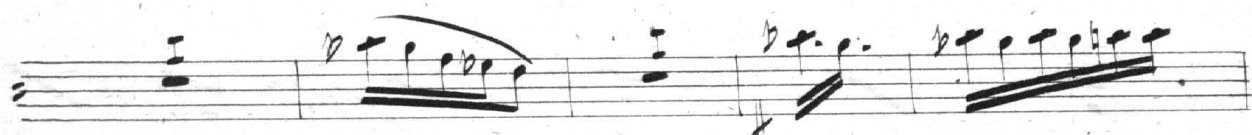
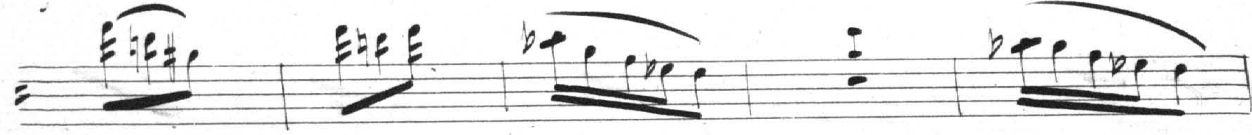
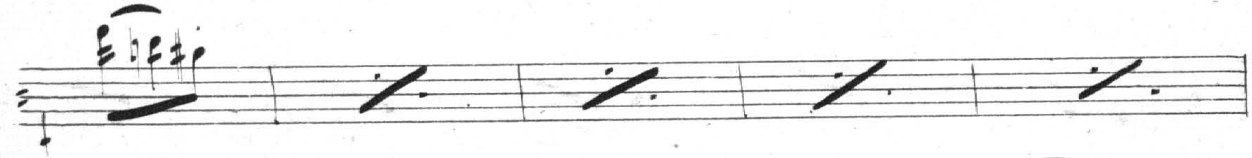
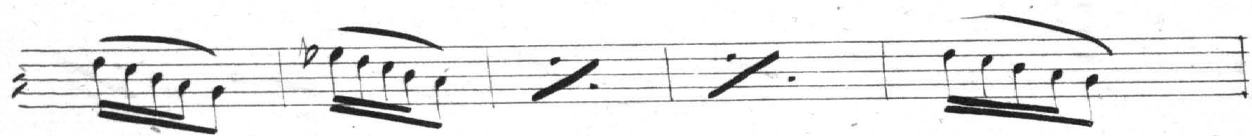
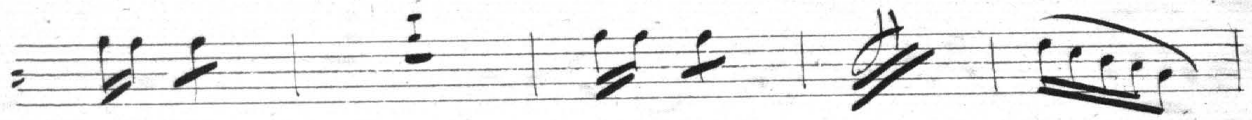
16: 5 Duo



A handwritten musical score consisting of 12 staves. The notation includes various rhythmic values such as eighth, sixteenth, and thirty-second notes, as well as rests and accidentals. The score features several dynamic markings, including *mf* and *f*, and includes complex rhythmic patterns like triplets and sixteenth-note runs. The manuscript is written in black ink on aged, slightly textured paper.

Handwritten text or logo in the top left corner.

A handwritten musical score consisting of ten staves. The notation includes various rhythmic values such as eighth and sixteenth notes, rests, and beams. There are several dynamic markings, including a large '8' on the eighth staff and a '5' on the tenth staff. The score concludes with a double bar line and a signature on the bottom staff.



# N<sup>o</sup> 6. Quatuor.

*Andante moderato*  $\text{G}^{\flat}$   $\text{C}$   $\text{Canto}$   $\text{S}$

Musical staff with a treble clef, a key signature of one flat (G-flat), and a common time signature (C). It contains a whole rest followed by a half note G, a quarter note A, and a quarter note B.

Musical staff with a bass clef, a key signature of one flat, and a common time signature. It contains a half note G, a quarter note A, and a quarter note B, followed by a double bar line and a fermata.

Musical staff with a treble clef, a key signature of one flat, and a common time signature. It contains a quarter note G, a quarter note A, a quarter note B, and a quarter note C, followed by a double bar line and a fermata.

Musical staff with a treble clef, a key signature of one flat, and a common time signature. It contains a quarter note G, a quarter note A, a quarter note B, and a quarter note C, followed by a double bar line and a fermata.

Musical staff with a treble clef, a key signature of one flat, and a common time signature. It contains a quarter note G, a quarter note A, a quarter note B, and a quarter note C, followed by a double bar line and a fermata.

Musical staff with a treble clef, a key signature of one flat, and a common time signature. It contains a quarter note G, a quarter note A, a quarter note B, and a quarter note C, followed by a double bar line and a fermata.

Musical staff with a treble clef, a key signature of one flat, and a common time signature. It contains a quarter note G, a quarter note A, a quarter note B, and a quarter note C, followed by a double bar line and a fermata.

Musical staff with a treble clef, a key signature of one flat, and a common time signature. It contains a quarter note G, a quarter note A, a quarter note B, and a quarter note C, followed by a double bar line and a fermata.

Musical staff with a treble clef, a key signature of one flat, and a common time signature. It contains a quarter note G, a quarter note A, a quarter note B, and a quarter note C, followed by a double bar line and a fermata.

*X. S.*





Handwritten musical notation for guitar, consisting of five staves. The notation includes various notes, rests, and fingerings. The first staff starts with a treble clef and a key signature of one sharp (F#). The notes are: 4, 5, 6, 7, 8. The second staff continues with notes 9, 10, 11, 12, 13. The third staff has notes 14, 15, 16, 17, 18. The fourth staff has notes 19, 20, 21, 22, 23, 24. The fifth staff has notes 25, 26, 27, 28, 29.

Handwritten musical notation for voice. The lyrics are: "ciel que viens je de l'innocence est un bil..."

Handwritten musical notation for voice. The lyrics are: "let de l'onde mathu... rin"

Handwritten musical notation for guitar, consisting of a single staff with notes and rests.

Handwritten musical notation for guitar, consisting of a single staff with notes and rests.

Handwritten musical notation for guitar, consisting of a single staff with notes and rests.

Handwritten musical notation for guitar with the instruction "un trisor f".

Handwritten musical notation for guitar, consisting of a single staff with notes and rests.

No. 9 Final.

160  $\frac{4}{4}$   $\text{F}\sharp$   $\text{C}$  20

Musical staff with treble clef, key signature of one sharp (F#), and 4/4 time signature. It contains the first measure of the piece.

Musical staff with treble clef, containing the second and third measures of the piece.

Musical staff with treble clef, containing the fourth and fifth measures of the piece. A double bar line with the number 8 is placed after the fifth measure.

Musical staff with treble clef, containing the sixth and seventh measures of the piece.

Musical staff with treble clef, containing the eighth and ninth measures of the piece.

Musical staff with treble clef, containing the tenth and eleventh measures of the piece. A double bar line with the number 6 is placed after the eleventh measure.

Musical staff with treble clef, containing the twelfth and thirteenth measures of the piece. A double bar line with the number 2 is placed after the thirteenth measure.

Musical staff with treble clef, containing the fourteenth and fifteenth measures of the piece.

Musical staff with treble clef, containing the sixteenth and seventeenth measures of the piece.

Musical staff with treble clef, containing the eighteenth and nineteenth measures of the piece.

Handwritten musical notation on six staves. The notation includes various notes, rests, and slurs. The first staff begins with a treble clef and a key signature of one sharp (F#). The music consists of several measures with notes and rests. The second staff continues the notation with similar note values and rests. The third staff features a more active melodic line with eighth and sixteenth notes. The fourth staff has a similar active line with some slurs. The fifth staff includes a measure with a sharp sign (#) and a slur. The sixth staff starts with a measure containing a sharp sign (#) and a slur, followed by a few notes and rests.

*F. in*

In mancanza del 2° flauto

And. Moz.  $\text{♩} = \text{♩}$   $\text{♩} = \text{♩}$

$\frac{3}{4}$   $\frac{2}{4}$  *ritornello*  $\frac{2}{4}$   $\frac{7}{8}$  *du*  $\frac{2}{4}$

Va all' allegretto  
per il solo.

En defect de la 2<sup>me</sup> flûte