

Viola

Capriccio Humoresque

for Pianoforte & Orchestra

Daniel Léo Simpson
Palo Alto, California
Spring 1996

Allegro ♩=126 poco rit. *ff* rit. .

6 poco meno mosso ♩=120 *p* *f* poco rall. .

12 meno mosso ♩=112 accel.

16 poco più mosso ♩=120 *f* pizz. *f* 2 arco *f* Tempo primo ♩=126

22 rit. meno mosso ♩=106 pizz. *dim.* *mp*

27 più mosso ♩=126 3 rit. più mosso ♩=126 2

33 arco **meno mosso**

mp *mf* *p* *mp* *f*

40 pizz. arco

p *mp* *mp*

47 pizz. rit. arco

mp *cresc.*

54 **Allegro con brio** ♩=120 poco rit.

ff *mf* *f*

71 **poco meno mosso** ♩=120 pizz.

mp

82 poco rit. a tempo ♩=126

f *mf*

88

93 arco [Non Div.] 3

101 [div.] (b)(b)

105 poco rit. meno mosso ♩=108 accel. mp

110 a tempo ♩=126 f

113 pizz. arco rit. > //

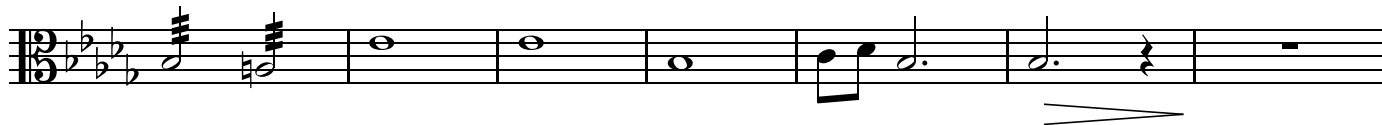
118 meno mosso ♩=108 mp mf mp

123 mf mp

128



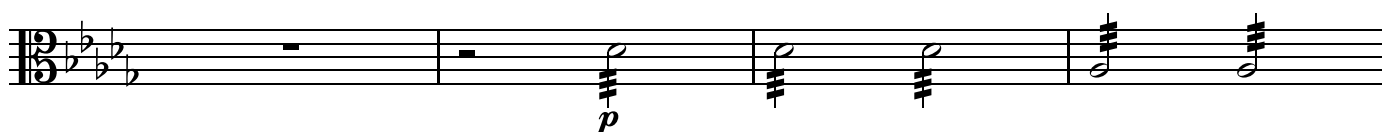
133



140

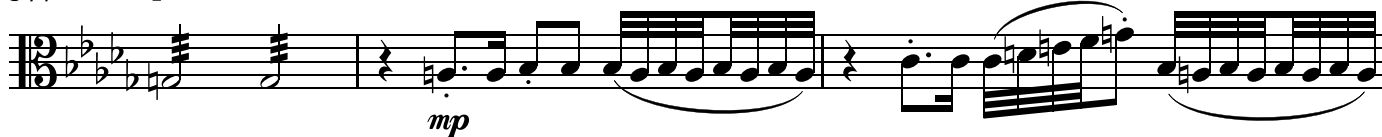
meno mosso ♩=83

accel.



144

più mosso ♩=104



147

accel.



149



151

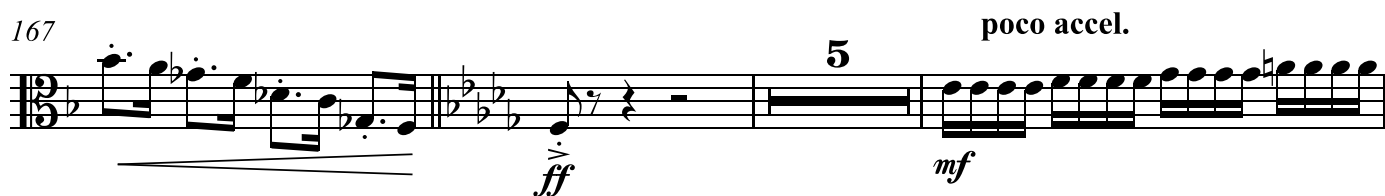
Allegro con brio ♩=120



164



167



175



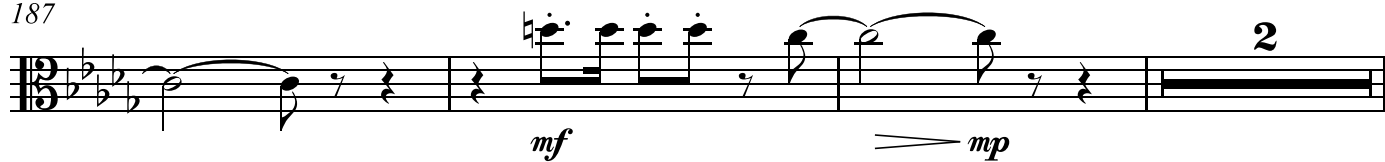
177



184



187



192

mf *cresc.* *f*

198

f

200

ff

202

ff

204

mf *mf*

209

cresc.

211

ff

214

mp *ff* *poco rit.*