

# GAVOTTE in a

for Trumpet & Organ

Score (01':24")

Matthew Camidge (1764 - 1844)  
Arr. Michel Rondeau

Allegro moderato  $\text{♩} = 90$

Trumpet in C

Organ

C Tpt.

Org.

C Tpt.

Org.

# GAVOTTE in a - Camidge - Score

2  
16

C Tpt.

Org.

21

C Tpt.

Org.

26

C Tpt.

Org.

31

C Tpt.

Org.

GAVOTTE in a - Camidge - Score

35

C Tpt.

Org.

Measures 35-38. The C Tpt. part has rests in measures 35 and 36, then plays a melody in measures 37 and 38. The Org. part provides accompaniment with chords and moving lines in both staves.

39

C Tpt.

Org.

Measures 39-42. The C Tpt. part plays a melody in measures 39-42, including a trill in measure 42. The Org. part provides accompaniment with chords and moving lines in both staves.

43

C Tpt.

Org.

Measures 43-46. The C Tpt. part has rests in measures 43 and 44, then plays a melody in measures 45 and 46. The Org. part provides accompaniment with chords and moving lines in both staves.

# GAVOTTE in a

*for Trumpet & Organ*

## Trumpet in C

Matthew Camidge (1764 - 1844)  
Arr. Michel Rondeau

Allegro moderato  $\text{♩} = 90$

6

13

21

28

35

42

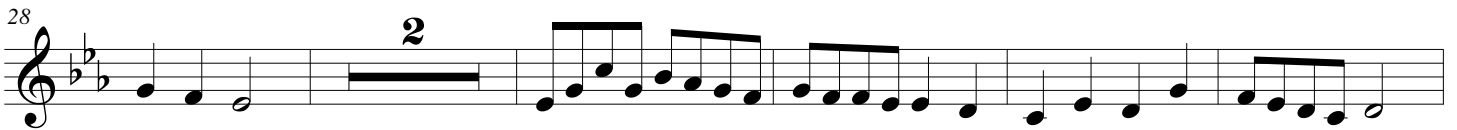
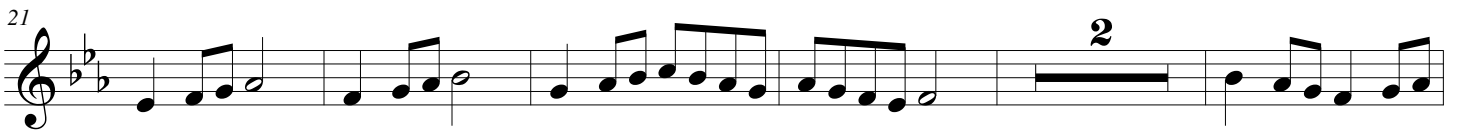
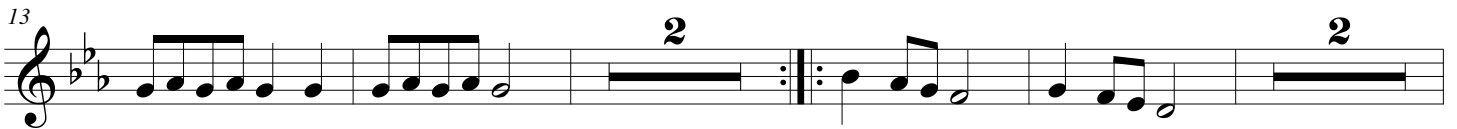
# GAVOTTE in a

for Trumpet & Organ

## Trumpet in A

Matthew Camidge (1764 - 1844)  
Arr. Michel Rondeau

Allegro moderato  $\text{♩} = 90$



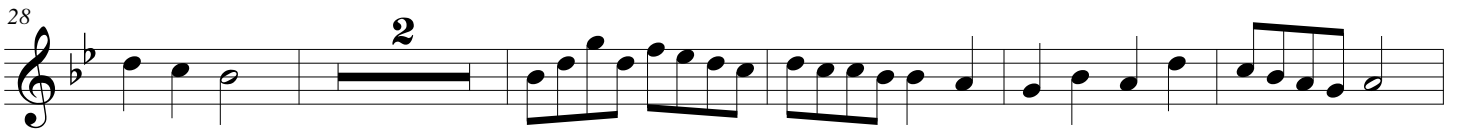
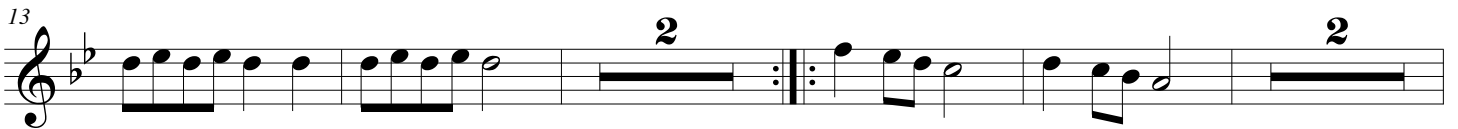
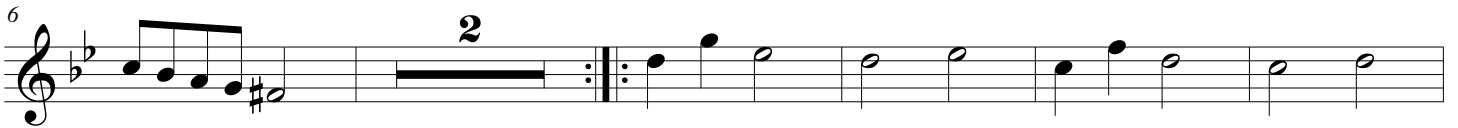
# GAVOTTE in a

for Trumpet & Organ

## Trumpet in D

Matthew Camidge (1764 - 1844)  
Arr. Michel Rondeau

Allegro moderato  $\text{♩} = 90$



# GAVOTTE in a

for Trumpet & Organ

## Organ

Matthew Camidge (1764 - 1844)  
Arr. Michel Rondeau

Trumpet in C

Allegro moderato ♩ = 90

Organ

C Tpt.

Org.

C Tpt.

Org.

# GAVOTTE in a - Camidge - Organ

2  
16

C Tpt.

Org.

Measures 2-16. The C Tpt. part begins with a whole rest, followed by a repeat sign and a melodic line. The Organ part consists of a treble and bass staff with chords and a bass line.

21

C Tpt.

Org.

Measures 21-30. The C Tpt. part has a continuous melodic line. The Organ part continues with chords and a bass line.

26

C Tpt.

Org.

Measures 26-30. The C Tpt. part has a melodic line with some rests. The Organ part continues with chords and a bass line.

31

C Tpt.

Org.

Measures 31-35. The C Tpt. part has a continuous melodic line. The Organ part continues with chords and a bass line.



GAVOTTE in a - Camidge - Organ

C Tpt.

35

Org.

Detailed description: This system covers measures 35 to 38. The C Tpt. part starts with a whole rest in measure 35, then plays a half note G4 in measure 36, a half note A4 in measure 37, and a half note B4 in measure 38. The Organ part features a complex texture. The right hand plays a series of chords and moving lines, including a triplet of eighth notes in measure 35 and a half note G4 in measure 36. The left hand plays a steady eighth-note accompaniment, starting with a half note G3 in measure 35 and moving up stepwise.

C Tpt.

39

Org.

Detailed description: This system covers measures 39 to 42. The C Tpt. part plays a half note G4 in measure 39, a half note A4 in measure 40, and a half note B4 in measure 41. In measure 42, it plays a half note G4 with a trill (tr) above it. The Organ part continues with similar textures. The right hand has a half note G4 in measure 39, a half note A4 in measure 40, and a half note B4 in measure 41. The left hand maintains the eighth-note accompaniment, with a half note G3 in measure 39 and moving up stepwise.

C Tpt.

43

Org.

Detailed description: This system covers measures 43 to 46. The C Tpt. part has whole rests in measures 43 and 44, then plays a half note G4 in measure 45, a half note A4 in measure 46, and a half note B4 in measure 47. The Organ part features a half note G4 in measure 43, a half note A4 in measure 44, and a half note B4 in measure 45. The right hand has a half note G4 in measure 46 and a half note A4 in measure 47. The left hand continues the eighth-note accompaniment, with a half note G3 in measure 43 and moving up stepwise.