

Schranck No: II.  
2. Fuch 38 Sage.  
No: 1.) Concerto.  
co Violino concert: V.  
Viola e Basso  
Partitura in dupla. O. St.  
del Sig: Bettinazzi.



Musica	
2674	
0	1a

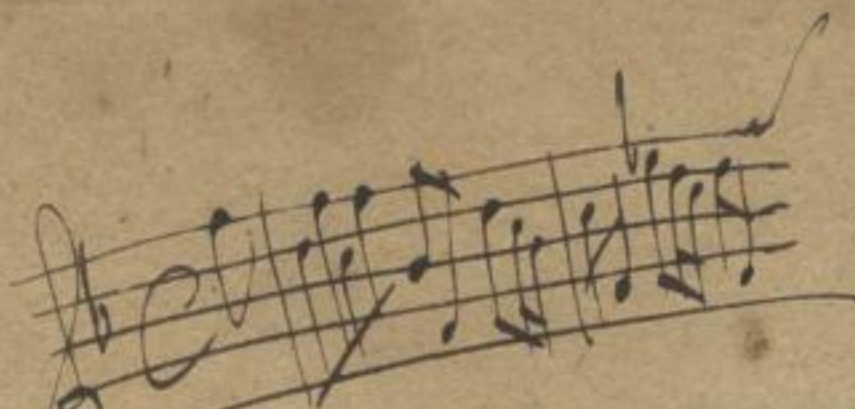
46/87

SLUB  
Dresden









I.

a 7.

Violino Concerto  
Violin  
Viola  
Basso.

Al: 7.

Petlinovici

Mus. 2674-0-1a

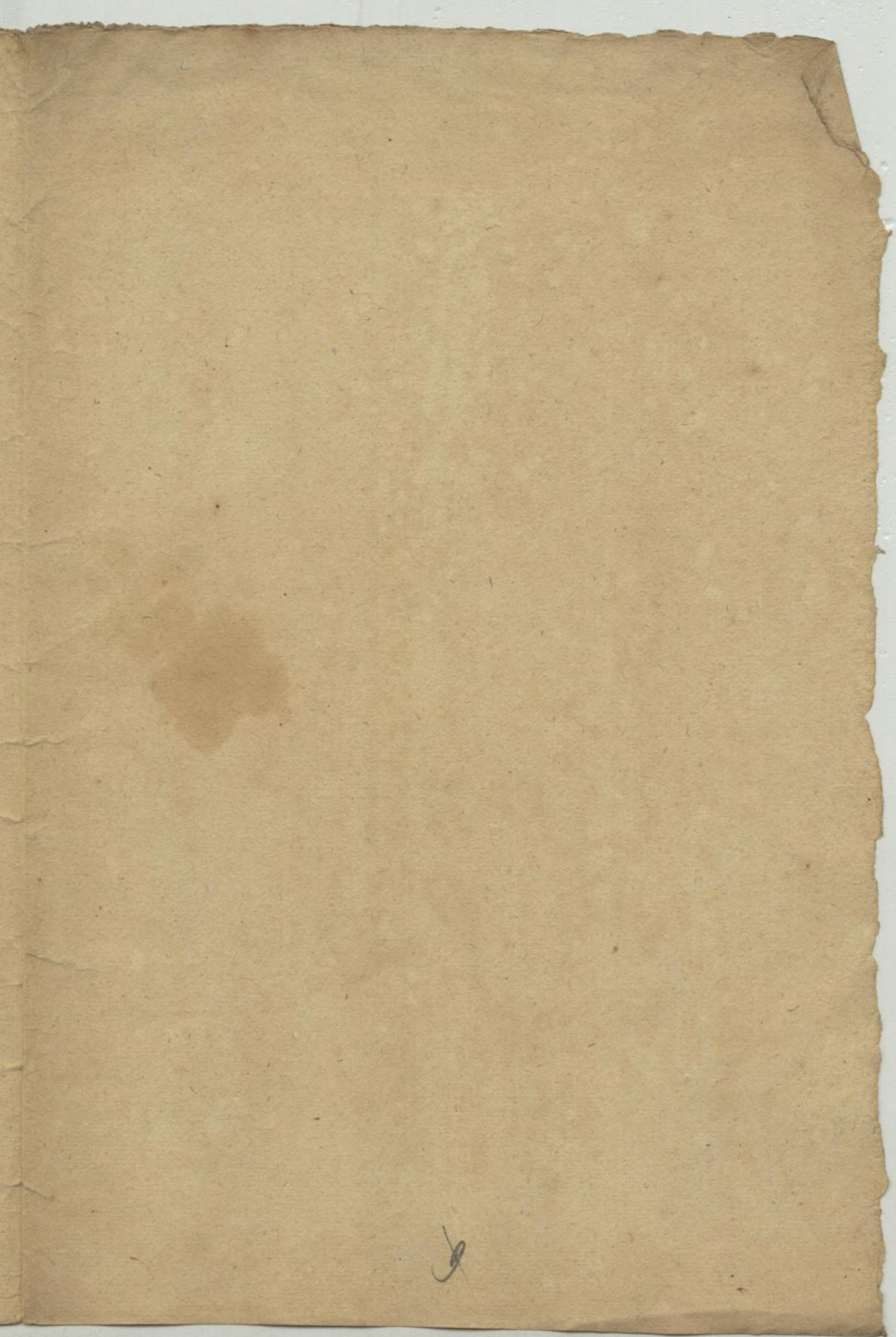
~~Ca 87~~

~~(1-21)~~



7









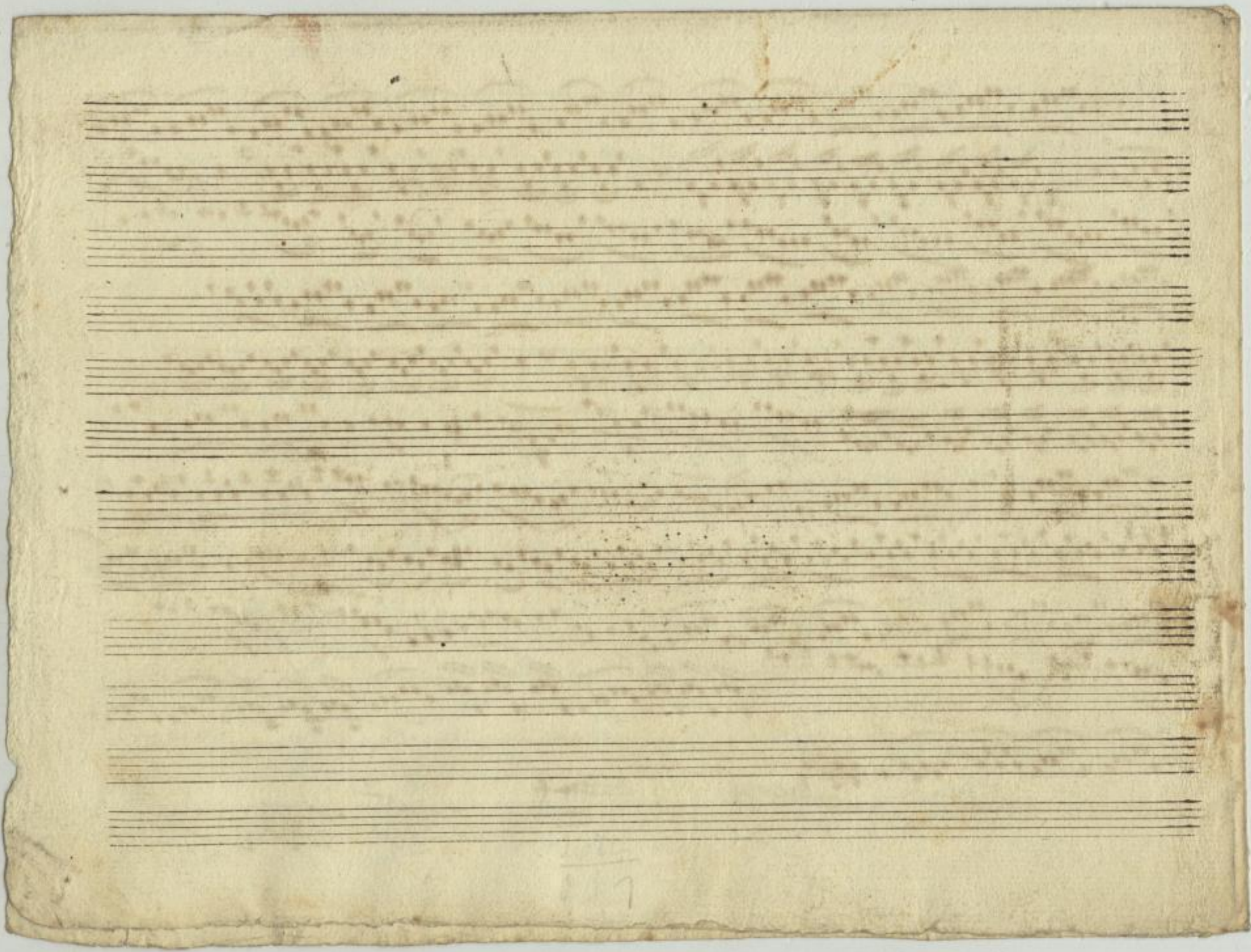
Concerto a 4.

6 X 87 Mus. 2674-0-1a





Handwritten musical score on aged paper, featuring multiple staves of music. The notation includes various notes, rests, and dynamic markings such as *sol*, *forte*, and *ritto*. The score is written in a historical style, likely from the 18th or 19th century. The paper shows signs of wear, including discoloration and some ink smudges. The word "Duetto" is written at the top left of the first staff. The music consists of several systems of staves, with some staves containing multiple voices or instruments. The notation is dense and detailed, with many slurs and ties. The bottom of the page features a few more staves, some of which are partially obscured by a large ink smudge.



117

Violino Primo.

*Allegro* *Piano* *Forte* *Forte* *piano* *Forte* *Forte* *Forte* *piano* *Forte* *piano* *Forte* *piano* *Forte* *piano* *Segue*

The image shows a page of handwritten musical notation for the first violin part. The score is written on ten staves. The first staff begins with the tempo marking 'Allegro' and a 'C' time signature. The music consists of various rhythmic patterns, including eighth and sixteenth notes, and rests. Dynamic markings are written above the notes: 'Piano' at the beginning, followed by 'Forte' and 'piano' in alternating measures. The word 'Segue' is written at the end of the first system. The paper is aged and has some staining.

*C. 87*

Mus. 2674-0-1a

40

*And. Basso*  
*faccato.*  
*piano*  
*forte*  
*piano*  
*fatti*  
*forte*  
*piano*  
*forte*

5

319

Violino 2<sup>do</sup>

*Allegro* *piano.*

*Adagio*

*46 287*  
Mus. 2674-0-1a

X







*Presto*  
*Piacento*  
*piano*  
*forte*  
*piano*  
*futti*  
*forte*  
*forte*  
*piano*  
*piano*  
*forte*  
*rit.*

2674  
8 3



*Presto*  
*faccato*

24

*piano*

*Lorte*

*Lorte*

*piano*

*Lorte*

Basso

Handwritten musical score for Bass, consisting of ten staves. The score begins with the tempo marking *allegro* and ends with *Adagio*. The notation includes various rhythmic patterns, dynamic markings, and performance instructions.

Dynamic markings and performance instructions include:

- piano* (written above the first staff)
- Fov:* (written below the second staff)
- forte* (written below the second staff)
- piano* (written below the second staff)
- forte* (written below the third staff)
- Fov:* (written below the third staff)
- piano* (written below the third staff)
- Fov:* (written below the fourth staff)
- piano* (written below the fifth staff)
- Forte* (written below the sixth staff)
- Adagio* (written at the beginning of the seventh staff)
- solo* (written below the seventh staff)
- forte* (written below the eighth staff)
- solo* (written below the eighth staff)
- piano* (written below the eighth staff)
- Forte* (written below the ninth staff)
- piano* (written below the ninth staff)
- Forte* (written below the ninth staff)

The score concludes with the instruction *Volte Cho segue* written across the bottom of the tenth staff.

687  
Mus. 2674-0-1a



12

*Staccato*

A handwritten musical score on aged, yellowed paper. The score consists of ten staves of music, each ending with a checkmark. The first staff begins with the word "Presto" and a 4/4 time signature. The music is written in a single system with a treble clef and a key signature of one flat. The notation includes various rhythmic values, including eighth and sixteenth notes, and rests. There are several dynamic markings: "pia:" on the third staff, "Fov:" on the fourth, fifth, sixth, and eighth staves, and "piano" on the seventh staff. A "24" is written above the second staff. The paper shows signs of age, including some staining and irregular edges.