

# Canzon à 8

Choir II

Francesco Cavalli (1602-1676)

Violetta (part 5 of 8)

Musiche Sacre Concertanti (Venice, 1656)

4 5 4 10

1 15 1

20

25 1 3 30 2 35

40 1 45

50

55 5 60

65

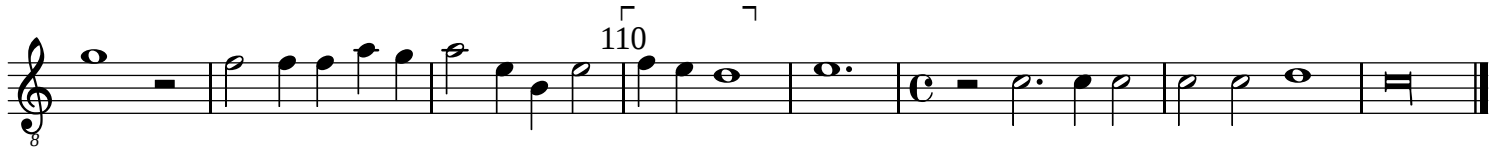
70 4 75

80 2 85 1

90 2 95

100 1 105 1

Canzon à 8 (Choir II, violetta)



# Canzon à 8

Choir II  
Violetta (part 5 of 8)

Francesco Cavalli (1602-1676)  
Musiche Sacre Concertanti (Venice, 1656)

4 5 4 10

1 15 1

20 1

25 1 3 30 2 35

40 1 45

50 50

55 5 60

65

70 4 75

80 2 85 1

90 2 95 2

100 1 105 1

Canzon à 8 (Choir II, violetta)

A single staff of music in treble clef, common time (C). The piece begins with a whole rest in the first measure. The second measure contains a half note G4. The third measure contains a half note A4. The fourth measure contains a half note B4. The fifth measure contains a half note C5. The sixth measure contains a half note B4. The seventh measure contains a half note A4. The eighth measure contains a half note G4. The ninth measure contains a half note F4. The tenth measure contains a half note E4. The eleventh measure contains a half note D4. The twelfth measure contains a half note C4. The thirteenth measure contains a half note B3. The fourteenth measure contains a half note A3. The fifteenth measure contains a half note G3. The sixteenth measure contains a half note F3. The seventeenth measure contains a half note E3. The eighteenth measure contains a half note D3. The nineteenth measure contains a half note C3. The piece ends with a double bar line. Above the staff, the number '110' is written with a brace over the eighth and ninth measures. Above the staff, there are two small square symbols, one above the eighth measure and one above the ninth measure.

## Canzon à 8

Choir II

Francesco Cavalli (1602-1676)

Violetta (part 5 of 8)

Musiche Sacre Concertanti (Venice, 1656)

4 5 4 10

1 15 1

20 1

25 1 3 30 2 35

40 1 45

50

55 5 60

65

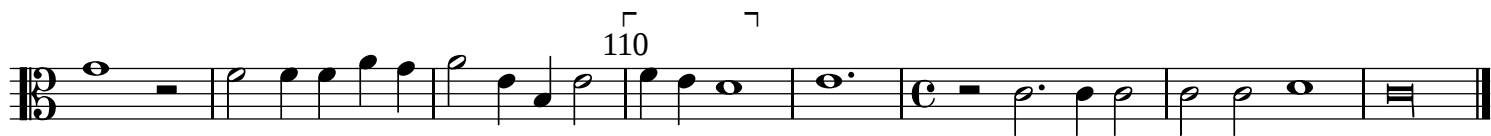
70 4 75

80 2 85 1

90 2 95 2

100 1 105 1

Canzon à 8 (Choir II, violette)



# Canzon à 8

Choir II

Francesco Cavalli (1602-1676)

Viola II (part 6 of 8)

Musiche Sacre Concertenti (Venice, 1656)

4 5 4 10

1 15 1

20 1 25 1

3 30 2 35

1 40 1 45

2 50 55 5

60

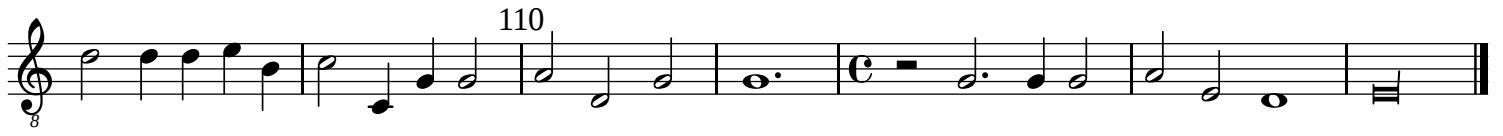
65 70 4

75

80 1 2 85 1

90 2 95 2

100 1 105 1





# Canzon à 8

Choir II

Francesco Cavalli (1602-1676)

Viola II (part 6 of 8)

Musiche Sacre Concertanti (Venice, 1656)

4 5 4 10

1 15 1

20 1 25 1

3 30 2 35 1 40 1 45

2 50 55 5

60

65 70 4

75

80 1 2 85 1

90 2 95 2

100 1 105 1

110



# Canzon à 8

Choir II  
Tenore (part 7 of 8)

Francesco Cavalli (1602-1676)  
Musiche Sacre Concertenti (Venice, 1656)

4 5 4 10

1 15 1

20 1 25 1

3 30 2 35

1 40 1 45

2 50 55 5

60

65 70 4

75

80 2 85 1

90 2 95 2

100 1 105 1

110

A single staff of music in treble clef with a common time signature (C). The staff contains 11 measures of music. The first measure has a whole rest. The second measure has a quarter rest followed by four eighth notes: G4, A4, B4, C5. The third measure has a dotted quarter note G4, followed by two eighth notes: A4, B4. The fourth measure has two quarter notes: C5, B4. The fifth measure has a whole note G4. The sixth measure has a whole rest. The seventh measure has a quarter note G4, followed by two eighth notes: A4, B4. The eighth measure has a quarter note C5, followed by two eighth notes: B4, A4. The ninth measure has a quarter note G4, followed by two eighth notes: F4, E4. The tenth measure has a quarter note D4, followed by two eighth notes: C4, B3. The eleventh measure has a whole rest. The staff ends with a double bar line.

# Canzon à 8

Choir II  
Tenore (part 7 of 8)

Francesco Cavalli (1602-1676)  
Musiche Sacre Concertenti (Venice, 1656)

4 5 4 10

1 15 1

20 1 25 1

3 30 2 35

1 40 1 45

2 50 55 5

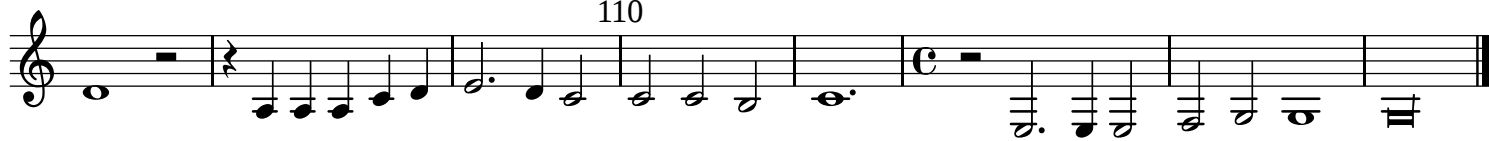
60 65 70 4

75

80 2 85 1

90 2 95 2

100 1 105 1



# Canzon à 8

Choir II  
Tenore (part 7 of 8)

Francesco Cavalli (1602-1676)  
Musiche Sacre Concertenti (Venice, 1656)

4 5 4 10

1 15 1

20 1 25 1

3 30 2 35

1 40 1 45

2 50 55 5

60

65 70 4

75

80 2 85 1

90 2 95 2

100 1 105 1





# Canzon à 8

Choir II

Francesco Cavalli (1602-1676)

Basso II (part 8 of 8)

Musiche Sacre Concertanti (Venice, 1656)

4 5 4 10

1 15 1

20 1

25 1 3 30 2 35

40 1 45

50 55 5

60

65 70 4

75

80 1 2 85 1

90 2 95 2

100 1 105 1

Canzon à 8 (Choir II, basso)

110

