

# MENUET in G

(Noten-Büchlein vor Anna Magdalena Bach -1725)

for Trumpet & Organ

Score (01':32")

Georg Böhm (1661 - 1733)

Arr. Michel Rondeau

Moderato ♩ = 110

Trumpet in C

Organ

Detailed description: This system contains the first six measures of the piece. The Trumpet in C part is written in a single treble clef with a key signature of one sharp (F#) and a 3/4 time signature. The Organ part is written in grand staff (treble and bass clefs) with the same key signature and time signature. The organ accompaniment features a steady eighth-note bass line and a treble line with chords and moving lines.

C Tpt.

Org.

Detailed description: This system contains measures 7 through 12. The C Trumpet part has a first ending (1.) and a second ending (2.) starting at measure 7. The Organ part continues with its accompaniment, including a first ending and second ending for the treble staff. Measure 12 ends with a repeat sign.

C Tpt.

Org.

Detailed description: This system contains measures 13 through 18. The C Trumpet part has a rest in measure 13 and then enters in measure 14. The Organ part continues with its accompaniment, featuring a trill in the treble staff at measure 15. Measure 18 ends with a repeat sign.

MENUET in G - Böhm - Score

19

C Tpt.

Org.

Detailed description: This system contains measures 19 through 24. The C Tpt. part (top staff) begins with a quarter note G4, followed by eighth notes A4-B4, quarter notes C5-B4, quarter notes A4-G4, and a dotted quarter note F#4. The Organ part (bottom staves) features a treble staff with chords and a bass staff with a steady eighth-note accompaniment. The key signature is one sharp (F#).

25

C Tpt.

Org.

Detailed description: This system contains measures 25 through 30. The C Tpt. part (top staff) has a dotted quarter note G4, followed by eighth notes A4-B4, quarter notes C5-B4, quarter notes A4-G4, and a dotted quarter note F#4. The Organ part (bottom staves) continues with chords and accompaniment. Measures 29 and 30 are marked with first and second endings. The key signature is one sharp (F#).

# MENUET in G

(Noten-Büchlein vor Anna Magdalena Bach -1725)

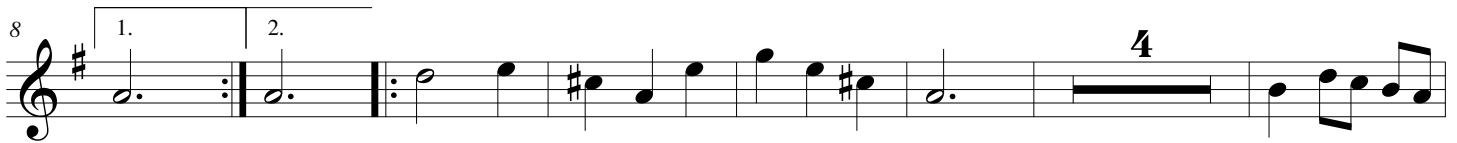
for Trumpet & Organ

## Trumpet in C

Moderato ♩ = 110

Georg Böhm (1661 - 1733)

Arr. Michel Rondeau





# MENUET in G

(Noten-Büchlein vor Anna Magdalena Bach -1725)

for Trumpet & Organ

## Trumpet in D

Moderato ♩ = 110

Georg Böhm (1661 - 1733)

Arr. Michel Rondeau



# MENUET in G

(Noten-Büchlein vor Anna Magdalena Bach -1725)

for Trumpet & Organ

Georg Böhm (1661 - 1733)

Arr. Michel Rondeau

## Organ

Trumpet in C

Moderato ♩ = 110

C Tpt.

Org.

C Tpt.

Org.

MENUET in G - Böhm - Organ

C Tpt.

Org.

19

C Tpt.

Org.

25

1.

2.