

Capitolo 3. del Sig. Barbieri.

Corno Secondo.

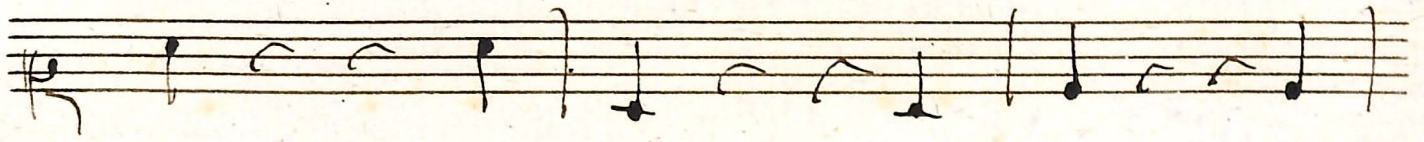
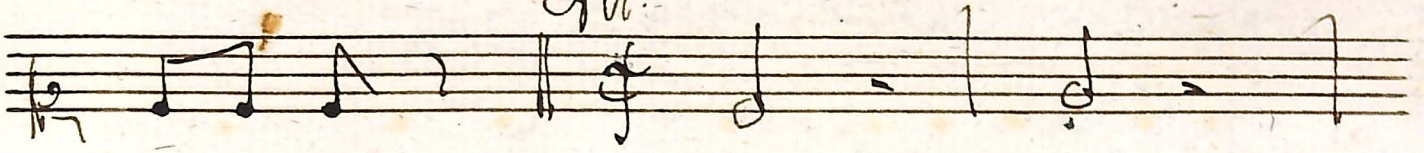
Alamire

Andante $\frac{2}{4}$

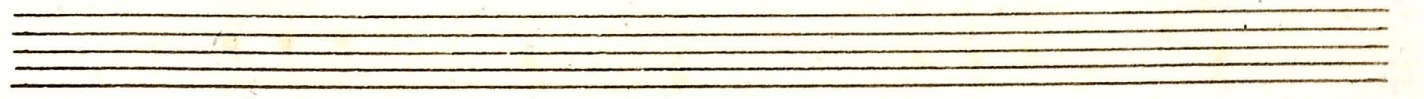
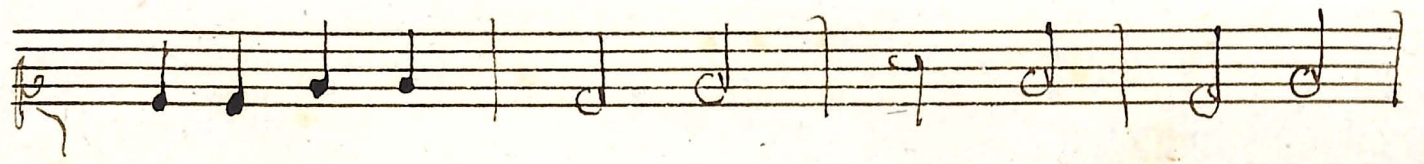
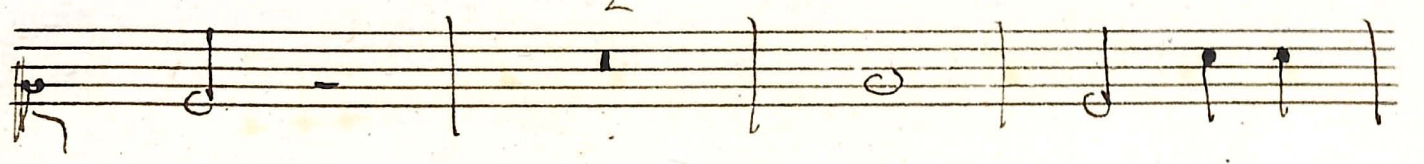
Soli

A handwritten musical score consisting of ten staves. The notation is in a single system, likely for a single melodic line. The key signature is one sharp (F#), and the time signature is 3/4. The music features a variety of rhythmic values, including eighth, sixteenth, and thirty-second notes, as well as rests and ties. There are several dynamic markings: a 'z.' (zest) above the first staff, and 'L' (lento) above the second, third, fourth, and fifth staves. The word 'solo' is written above the eighth staff. The notation includes stems, beams, and various note heads, with some notes having flags or beams indicating sixteenth or thirty-second notes. The paper shows signs of age, with some staining and discoloration.

All.^o



2



Canis Deo.

