

Les deux Aveugles

2^e Violon

A

62

2^e Violon

Les deux Aveugles



un ton plus bas de ce côté

8^o *moderato* pp

A handwritten musical score for the 2nd Violin part of the opera 'Les deux Aveugles'. The score is written on ten staves. It begins with a treble clef, a key signature of one sharp (F#), and a common time signature (C). The tempo is marked 'moderato' and the dynamic is 'pp'. The music consists of a series of eighth and sixteenth notes, often beamed together in groups, with some slurs and accents. The notation is clear and legible, showing the melodic line and accompaniment.

N^o 2. ma Romance de Belisaire

2. tons plus bas
Andante

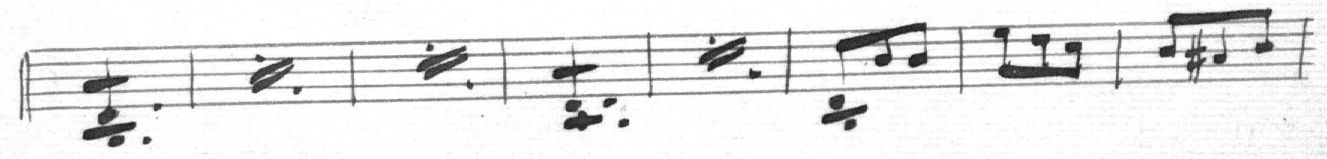
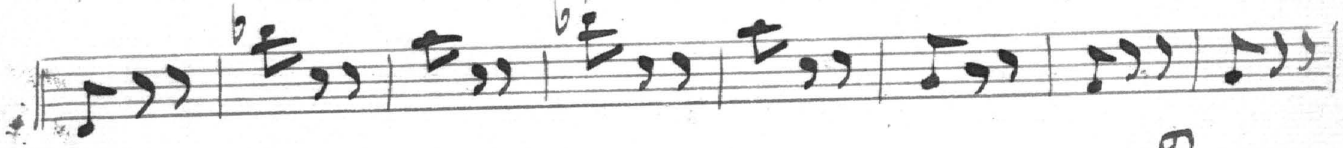
Handwritten musical score for a piece in 2/4 time, featuring a treble clef and a key signature of one flat. The score consists of six staves with various musical notations including notes, rests, and dynamic markings.

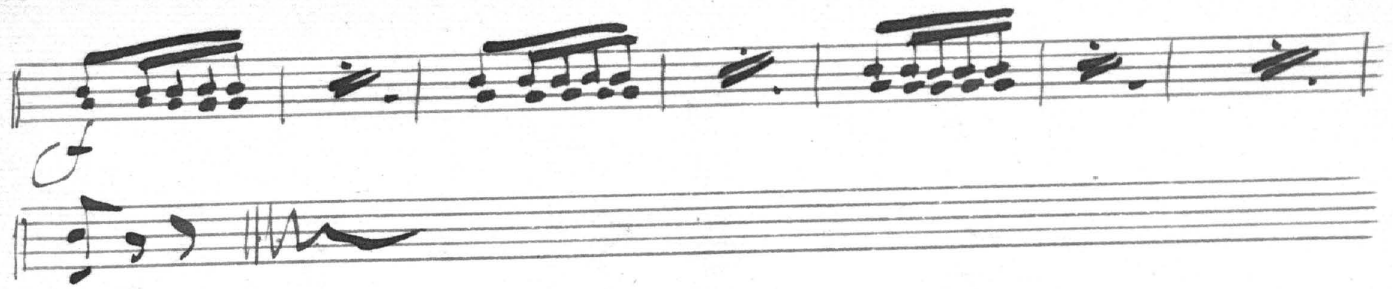
No 3, *colto* *Subito*

Five empty musical staves.

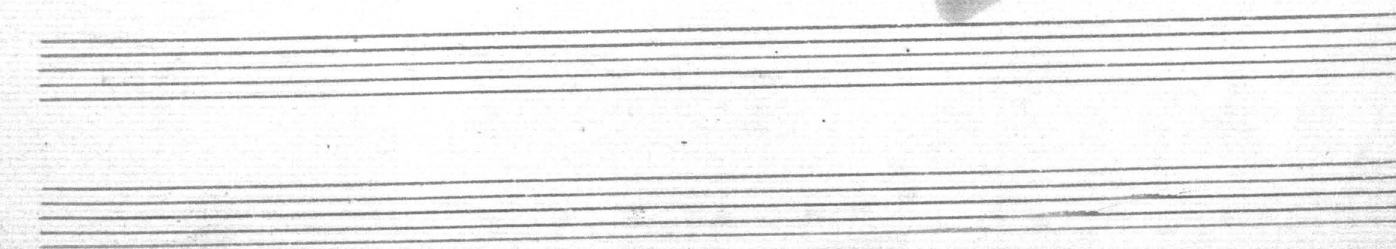
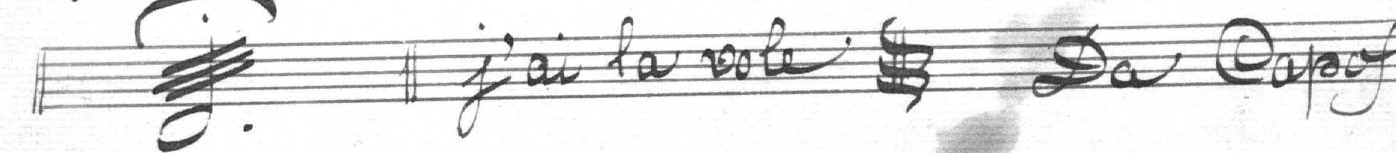
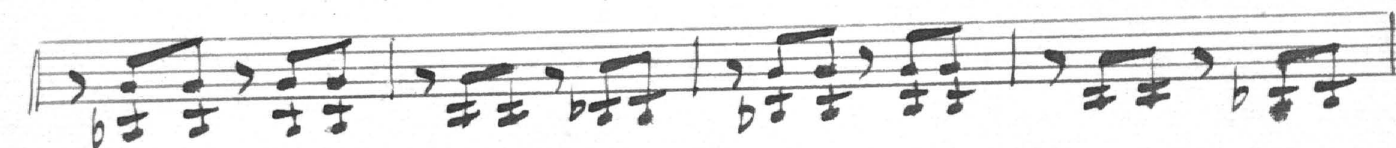
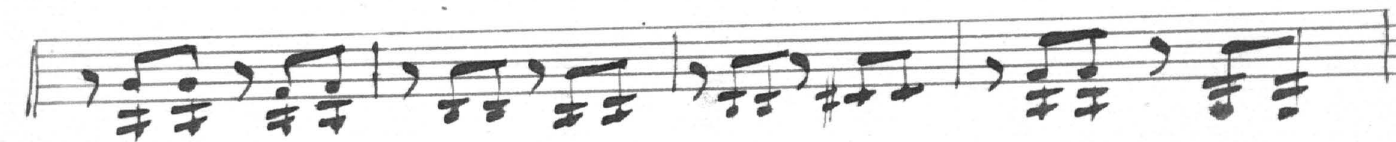
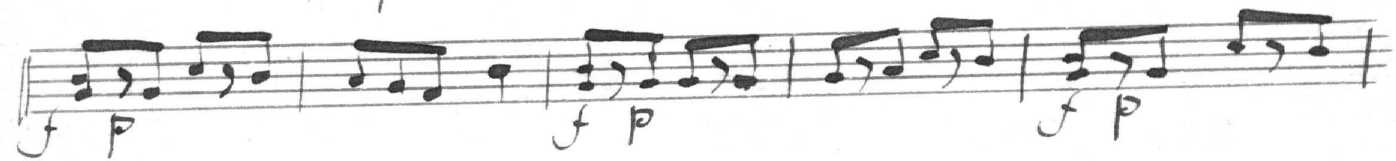
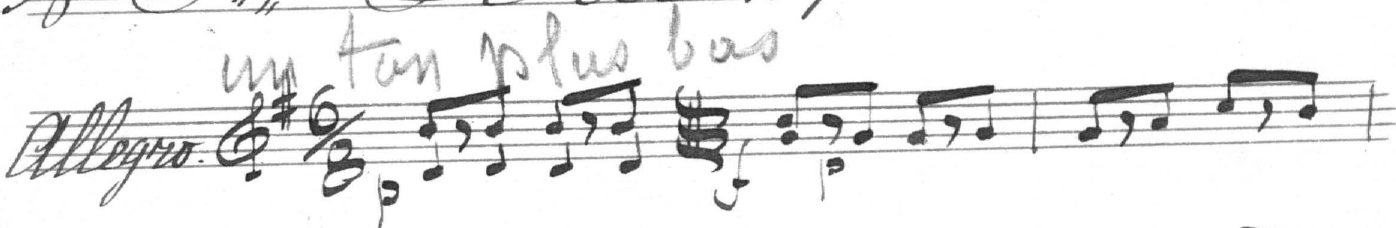
N^o 3. Seville en Espagne

un ton plus bas
Allegro $\text{G} \# \frac{3}{8}$ *pp*





No. 11. De Decamer.



N^o 5,

Quelqu'un vient.

un ton plus bas

Allegro