

DOMENICO ZIPOLI

Sonata per violino e continuo

Continuo

THIS SCORE IS DEDICATED
TO THE MEMORY OF WERNER ICKING

Realization of the figured bass and typesetting by Luigi Cataldi

Non-commercial copying welcome

Continuo

Sonata per violino e continuo

Domenico Zipoli
(1688–1726)

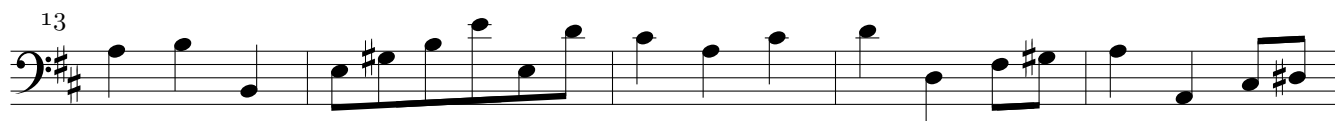
[Largo]

Musical score for Continuo, Largo section, measures 1-16. The score is written in bass clef with a key signature of two sharps (F# and C#) and a common time signature (C). The tempo is marked [Largo]. The score consists of seven staves of music. The first staff begins with a treble clef and a common time signature, followed by a bass clef and a common time signature. The music features a mix of eighth and sixteenth notes, with some rests and accidentals. The second staff is marked with a '3' above the first measure, indicating a triplet. The third staff is marked with a '5' above the first measure, indicating a quintuplet. The fourth staff is marked with a '7' above the first measure, indicating a septuplet. The fifth staff is marked with a '9' above the first measure, indicating a nonuplet. The sixth staff is marked with a '11' above the first measure, indicating an eleven-note group. The seventh staff is marked with a '13' above the first measure, indicating a thirteen-note group. The eighth staff is marked with a '16' above the first measure, indicating a sixteen-note group. The score ends with a double bar line and a fermata over the final note.

Allegro

Musical score for Continuo, Allegro section, measures 1-7. The score is written in bass clef with a key signature of two sharps (F# and C#) and a 3/4 time signature. The tempo is marked *Allegro*. The score consists of two staves of music. The first staff begins with a treble clef and a 3/4 time signature, followed by a bass clef and a 3/4 time signature. The music features a mix of quarter and eighth notes, with some rests and accidentals. The second staff is marked with a '7' above the first measure, indicating a seven-note group. The score ends with a double bar line and a fermata over the final note.

13



18



24



29



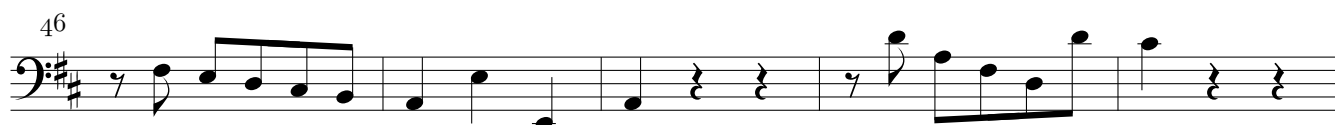
35



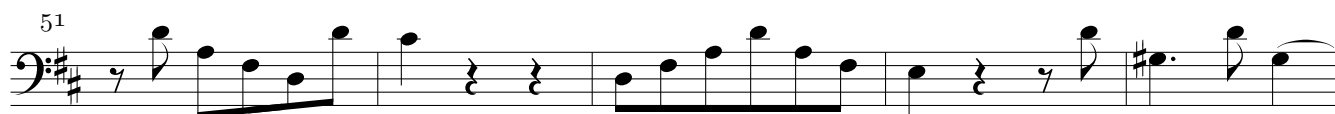
40



46



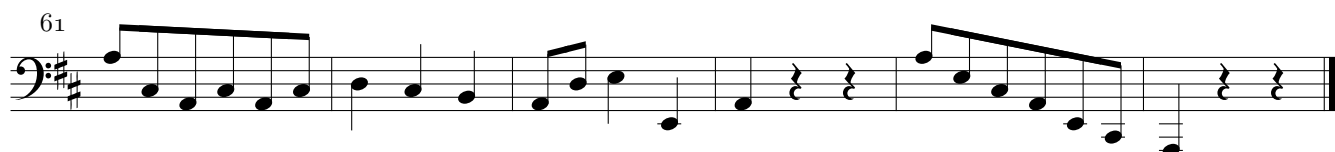
51



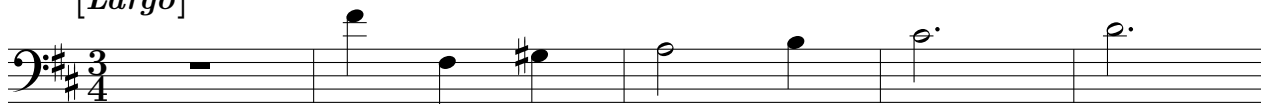
56



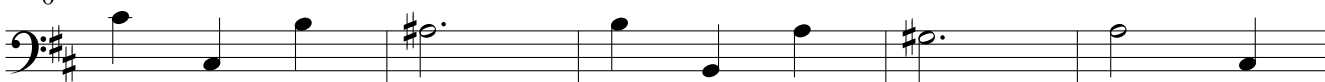
61



[Largo]



6



11



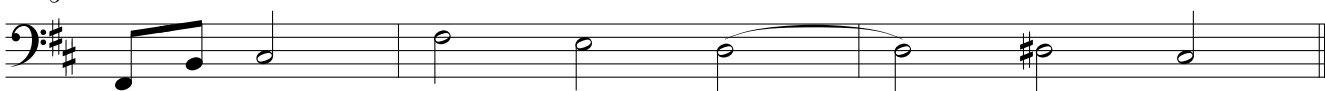
16



21



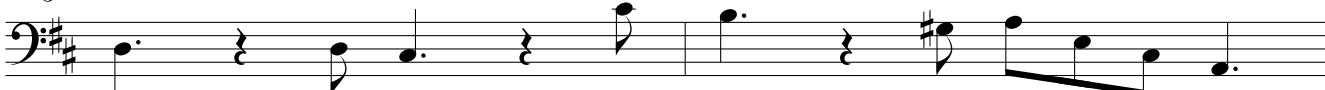
25



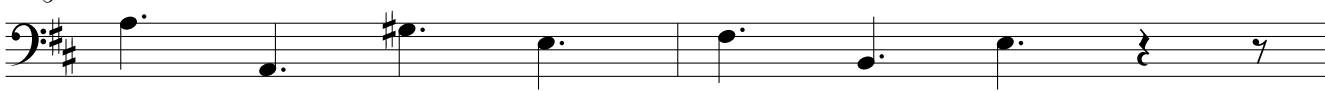
[Allegro]



3



5



7



9

11

13

16

19

21

24

26

28

31