

Twelve Sonatas

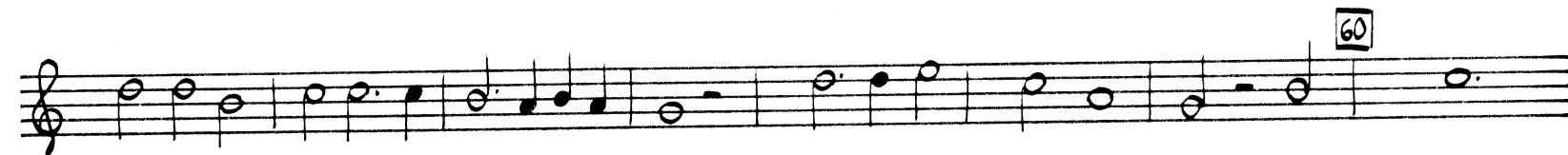
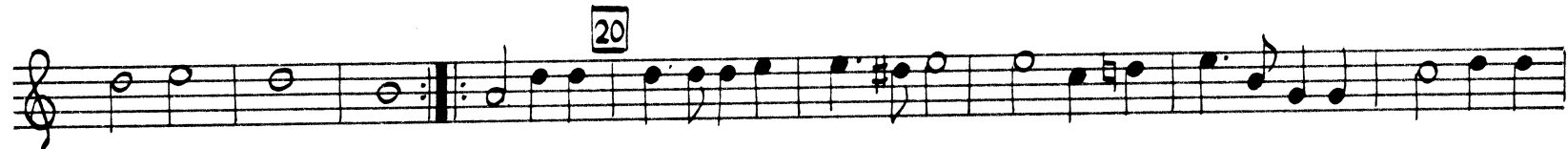
Johann Pezel

Horn in F
(substitute)
for Tbn. I

from
"Hora decima"
Leipzig, 1670

I. Sonata (No. 1)

Adagio



II. Sonata (No. 2)

Adagio



Musical score for Horn, measures 30-60. The score consists of six staves. Measure 30 is marked with a box containing the number 30. Measure 40 is marked with a box containing the number 40 and the tempo marking *Adagio*. Measure 50 is marked with a box containing the number 50. Measure 60 is marked with a box containing the number 60. The music features various rhythmic patterns, including eighth and sixteenth notes, and rests.

III. Sonata (No. 3)

Adagio

Musical score for Sonata (No. 3), measures 10-30. The score consists of six staves. Measure 10 is marked with a box containing the number 10. Measure 20 is marked with a box containing the number 20. Measure 30 is marked with a box containing the number 30. The music features various rhythmic patterns, including eighth and sixteenth notes, and rests.

IV. Sonata (No. 4)

Adagio

Musical score for Sonata (No. 4) in C major, Adagio. The score consists of six staves of music. The first staff begins with a treble clef, a common time signature (C), and a key signature of one sharp (F#). The music features a mix of eighth and sixteenth notes, with some rests. Measure numbers 10, 20, and 30 are indicated in small boxes above the staves. The piece concludes with a double bar line and repeat dots.

V. Sonata (No. 5)

Adagio

Musical score for Sonata (No. 5) in C major, Adagio. The score consists of six staves of music. The first staff begins with a treble clef, a 3/2 time signature, and a key signature of one sharp (F#). The music is characterized by a slower, more spacious feel with many half and whole notes. Measure numbers 10, 20, and 30 are indicated in small boxes above the staves. The piece concludes with a double bar line and repeat dots.

Musical score for Horn, measures 40-70. The score consists of six staves of music. Measure numbers 40, 50, 60, and 70 are indicated in boxes above the staves. A fermata is present over measures 49 and 50. The music is written in treble clef with a key signature of one sharp (F#).

VI. Sonata (No. 6) Adagio

Musical score for Sonata (No. 6), Adagio, measures 10-30. The score consists of six staves of music. Measure numbers 10, 20, and 30 are indicated in boxes above the staves. The music is written in treble clef with a key signature of one sharp (F#). The tempo is marked Adagio.

III. Sonata (No. 12)

Adagio

Musical score for Sonata (No. 12), measures 1-30. The score is written in treble clef with a key signature of one sharp (F#) and a common time signature (C). The tempo is marked 'Adagio'. The notation includes various note values, rests, and dynamic markings. Measure numbers 10, 20, and 30 are indicated in small boxes above the staff lines.

Adagio

Musical score for Sonata (No. 12), measures 31-36. The notation continues from the previous system, ending with a double bar line and repeat dots.

III. Sonata (No. 13)

Adagio

Musical score for Sonata (No. 13), measures 1-30. The score is written in treble clef with a key signature of one sharp (F#) and a 3/2 time signature. The tempo is marked 'Adagio'. The notation includes various note values, rests, and dynamic markings. Measure numbers 10, 20, and 30 are indicated in small boxes above the staff lines.

Adagio

Musical score for Sonata (No. 13), measures 31-36. The notation continues from the previous system, ending with a double bar line and repeat dots.

40

50

60

Adagio

70

Detailed description: This block contains the first system of music for the Horn part, spanning measures 40 to 70. It consists of six staves of music. The first staff begins with a circled measure number '40'. The music is written in treble clef with a key signature of one sharp (F#). The tempo is marked 'Adagio'. The second staff has a circled measure number '50', the third has '60', and the fourth has '70'. The music features a variety of note values including quarter, eighth, and sixteenth notes, as well as rests. The system concludes with a double bar line and repeat dots.

IX. Sonata (No. 14) Adagio

10

20

30

Detailed description: This block contains the second system of music for the Sonata (No. 14), spanning measures 1 to 30. It consists of seven staves of music, all in treble clef with a key signature of one sharp (F#). The tempo is marked 'Adagio'. The first staff begins with a circled measure number '10'. The second staff has '20', and the third has '30'. The music is characterized by intricate rhythmic patterns, including many sixteenth and thirty-second notes, and rests. The system ends with a double bar line and repeat dots.

X. Sonata (No.27)

Adagio

Musical notation for Sonata (No.27), measures 1-40. The score is written in treble clef with a 3/2 time signature. It features a series of half notes and quarter notes with various accidentals (sharps and naturals). Measure numbers 10, 20, 30, and 40 are indicated in small boxes above the staff.

Adagio

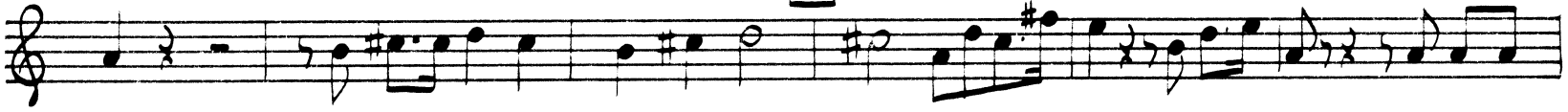
Musical notation for Sonata (No.27), measures 41-70. This section includes a triplet of eighth notes in measure 45. The notation continues with half and quarter notes. Measure numbers 50, 60, and 70 are indicated in small boxes above the staff.

XI. Sonata (No.30)

Adagio

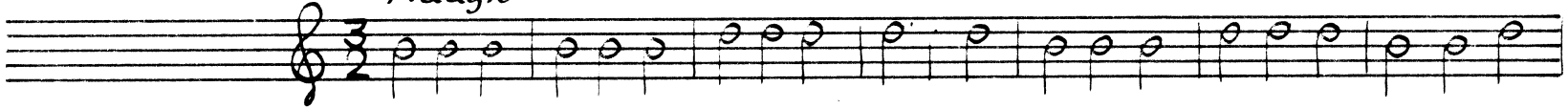
Musical notation for Sonata (No.30), measures 1-20. The score is written in treble clef with a common time signature. It begins with a series of eighth and sixteenth notes. Measure numbers 10 and 20 are indicated in small boxes above the staff.

30

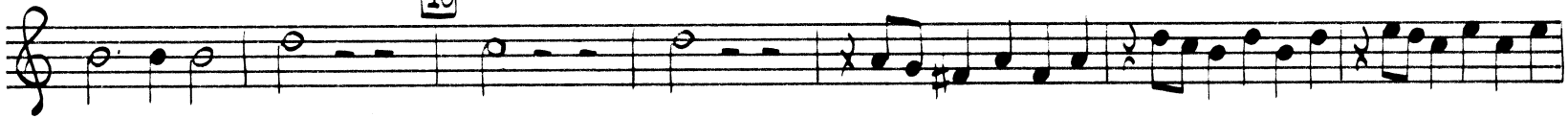


XII. Sonata (No. 39)

Adagio



10



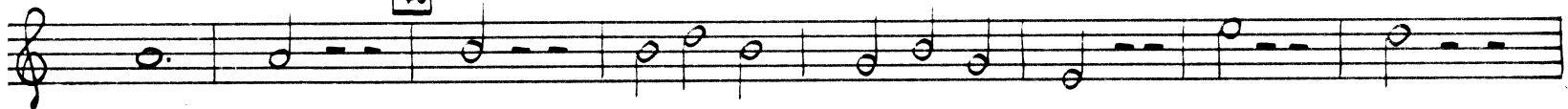
20



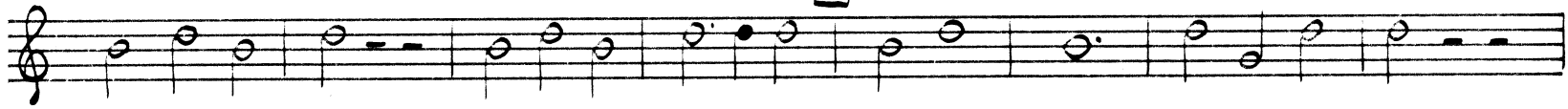
30



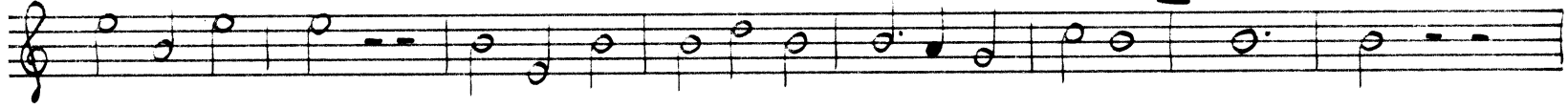
40



50



60



70

