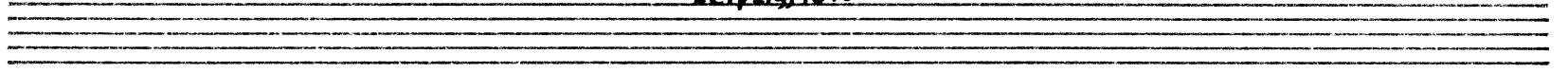


Twelve Sonatas

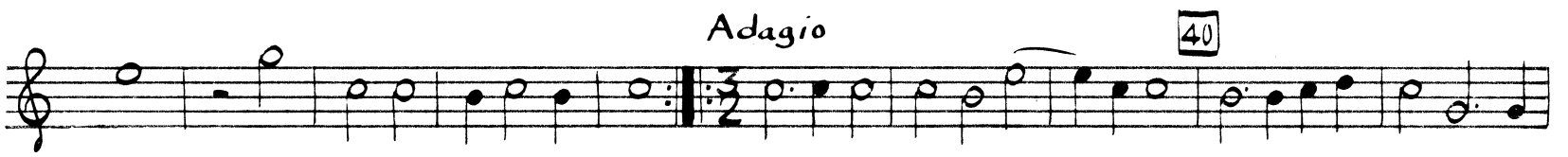
Johann Pezel

Trumpet II in C

from
"Hora Decima"
Leipzig, 1670



I. Sonata (No. 1) Adagio



II. Sonata (No. 2) Adagio



Musical score for Tpt. II, measures 30-60. The score consists of six staves of music. Measure 30 is marked with a box containing the number 30. The tempo is marked *Adagio* above the third staff. Measure 40 is marked with a box containing the number 40. Measure 50 is marked with a box containing the number 50. Measure 60 is marked with a box containing the number 60. The music features various rhythmic patterns, including eighth and sixteenth notes, and rests.

III. Sonata (No. 3)

Adagio

Musical score for Sonata (No. 3), measures 20-30. The score consists of seven staves of music. Measure 20 is marked with a box containing the number 20. Measure 40 is marked with a box containing the number 40. Measure 30 is marked with a box containing the number 30. The music features various rhythmic patterns, including eighth and sixteenth notes, and rests.

IV. Sonata (No. 4)

Adagio

Musical score for Sonata (No. 4) Tpt. II, Adagio. The score consists of six staves of music. The first staff begins with a treble clef, a key signature of one flat (B-flat), and a common time signature (C). The music is written in a single melodic line. Measure numbers 10, 20, and 30 are indicated in small boxes above the staves. The piece concludes with a double bar line and repeat dots at the end of the sixth staff.

V. Sonato (No. 5)

Adagio

Musical score for Sonato (No. 5) Tpt. II, Adagio. The score consists of six staves of music. The first staff begins with a treble clef, a key signature of one flat (B-flat), and a 3/2 time signature. The music is written in a single melodic line. Measure numbers 10, 20, 30, and 40 are indicated in small boxes above the staves. The piece concludes with a double bar line and repeat dots at the end of the fifth staff.

Musical score for Tpt. II, measures 45-75. The score consists of six staves of music in a single system. The key signature is one flat (B-flat). Measure 45 is marked with a box containing the number 50. Measure 55 is marked with a box containing the number 60. Measure 65 is marked with a box containing the number 70. The music features a variety of note values including quarter, eighth, and sixteenth notes, as well as rests.

VI. Sonata (No. 6) Adagio

Musical score for Sonata (No. 6) Adagio, measures 1-35. The score consists of six staves of music in a single system. The key signature is one sharp (F#) and the time signature is common time (C). Measure 10 is marked with a box containing the number 10. Measure 20 is marked with a box containing the number 20. Measure 30 is marked with a box containing the number 30. The music features a variety of note values including quarter, eighth, and sixteenth notes, as well as rests.

VII. Sonata (No. 12) *Adagio*

Musical score for Sonata (No. 12) Adagio, Tpt. II. The score consists of seven staves of music. The first staff begins with a treble clef and a common time signature. The music is written in a key with one sharp (F#). The score includes various rhythmic patterns, including eighth and sixteenth notes, and rests. Measure numbers 10, 20, and 30 are indicated in boxes above the staves. The word 'Adagio' is written above the sixth staff.

VIII. Sonata (No. 13) *Adagio*

Musical score for Sonata (No. 13) Adagio, Tpt. II. The score consists of five staves of music. The first staff begins with a treble clef and a 3/2 time signature. The music is written in a key with one sharp (F#). The score includes various rhythmic patterns, including eighth and sixteenth notes, and rests. Measure numbers 10, 20, and 30 are indicated in boxes above the staves. The word 'Adagio' is written above the fifth staff.

Musical score for Tpt. II, measures 40-70. The score consists of six staves. Measure 40 is marked with a box containing the number 40. Measure 50 is marked with a box containing the number 50. Measure 60 is marked with a box containing the number 60. Measure 70 is marked with a box containing the number 70. The tempo is marked *Adagio* between measures 60 and 70. The key signature is one sharp (F#) and the time signature is 2/4.

IV. Sonata (No. 14)

Musical score for Sonata (No. 14), measures 1-30. The score consists of six staves. The tempo is marked *Adagio*. Measure 10 is marked with a box containing the number 10. Measure 20 is marked with a box containing the number 20. Measure 30 is marked with a box containing the number 30. The key signature is one sharp (F#) and the time signature is 2/4.

X. Sonata (No. 27) Adagio

Musical score for Sonata (No. 27) Adagio, Tpt. II. The score consists of eight staves of music in G major and 3/2 time. It includes measure numbers 4, 7, 10, 20, 30, 40, 50, 60, and 70. The tempo is marked Adagio. The music features a mix of quarter, eighth, and sixteenth notes, with some rests and dynamic markings.

XI. Sonata (No. 30)

Musical score for Sonata (No. 30), Tpt. II. The score consists of four staves of music in G major and 3/4 time. It includes measure numbers 10 and 2. The tempo is marked Adagio. The music is characterized by rapid sixteenth-note passages and some rests.

Musical score for Tpt II, measures 20-30. The score consists of three staves. The first staff begins with a treble clef, a key signature of one sharp (F#), and a common time signature (C). Measure 20 is marked with a box containing the number 20. The music features a melodic line with eighth and sixteenth notes, followed by a repeat sign and a fermata. The second staff continues the melodic line, with measure 30 marked with a box containing the number 30. The third staff concludes the passage with a final note and a fermata.

XII. Sonata (No. 39) Adagio

Musical score for Sonata (No. 39) Adagio, measures 1-70. The score consists of ten staves. The first staff begins with a treble clef, a key signature of one sharp (F#), and a 3/2 time signature. The music is in a slow, Adagio tempo. Measures 20, 30, 40, 50, 60, and 70 are marked with boxes containing their respective numbers. The score features a variety of note values, including quarter, eighth, and sixteenth notes, as well as rests and fermatas. The piece concludes with a final note and a fermata on the tenth staff.