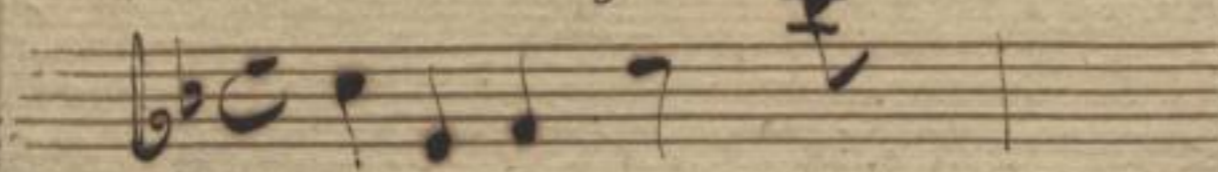
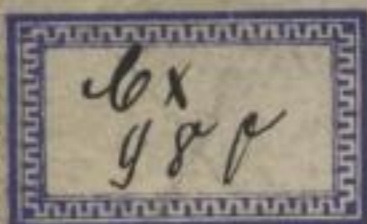


Schraner No. II.  
25. Fach 54. Lage.  
No. 5. Concerto.  
Conc. V. m. Viola e Basso.  
Partitura Solo.  
Del Sig. Tartini.



[olim:]



1

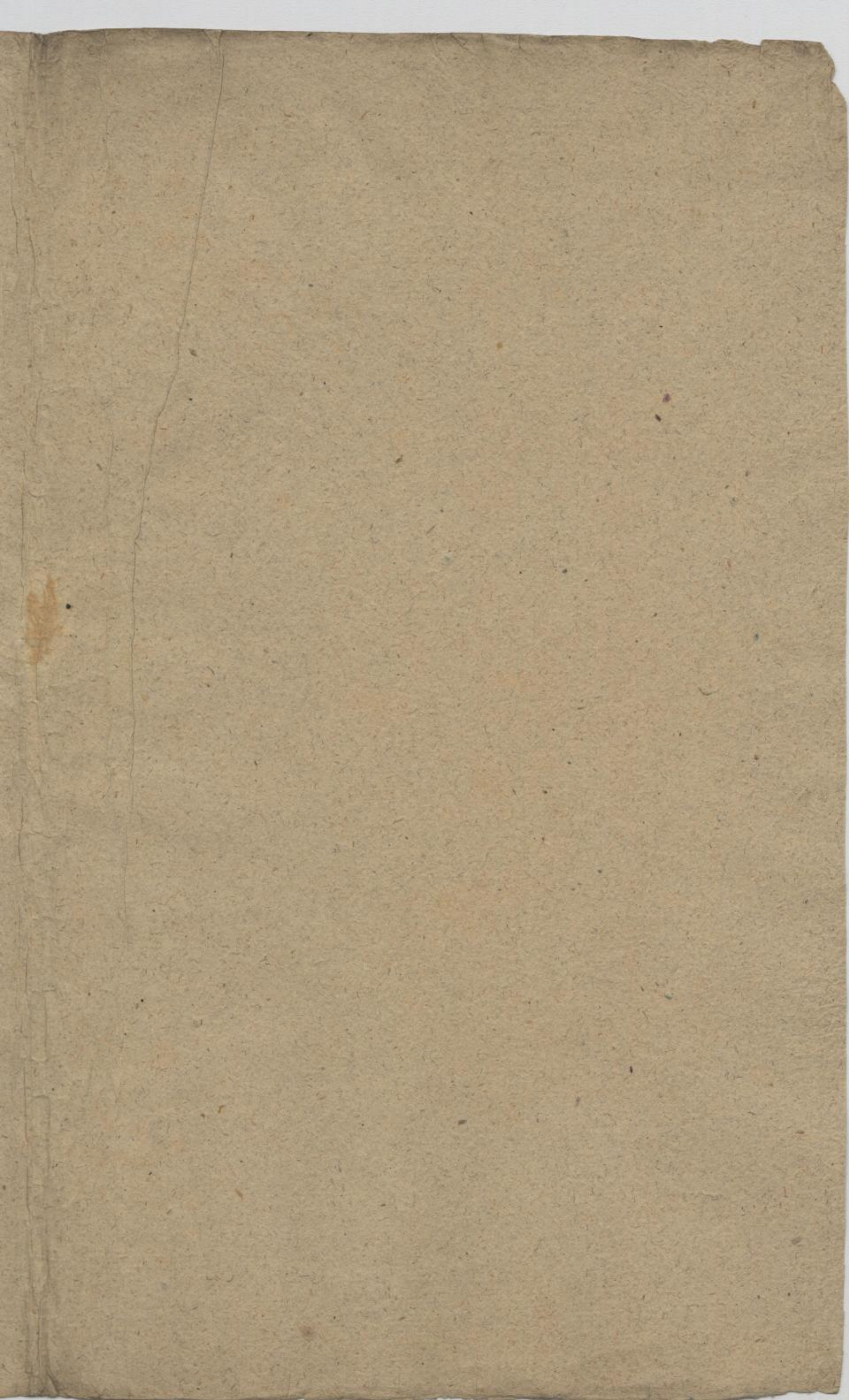


Mus. 2456-0-1,5











Ms. 2456  
011 (V)



Concerto del Sig. Tartini

A handwritten musical score on aged paper, consisting of ten staves. The top two staves contain dense, intricate musical notation with many accidentals and slurs. The middle two staves are mostly empty, with some light pencil markings. The bottom four staves contain more musical notation, including a section marked with the number '26' at the end. The paper shows signs of age, including yellowing and some foxing.

67. 181 (1-1-1) Mus. 2456-0-15





Handwritten musical score on aged paper, featuring ten staves of music. The notation includes treble clefs, a key signature of one sharp (F#), and various rhythmic values. The first staff has a 'C' time signature. The second staff has 'ad.' and 'ad.' markings above it. The sixth staff has a 'C' time signature. The eighth staff has a 'C' time signature. The tenth staff has a 'C' time signature. The paper is aged and has some staining.



3

4 X

\$

(Mus. 2456-0-1/5)

~~Handwritten scribbles~~



A page of handwritten musical notation on aged, yellowed paper. The page contains ten staves of music. The notation is dense and complex, featuring many sixteenth and thirty-second notes, often beamed together in groups. There are several dynamic markings, including a 'p.' (piano) in the lower right and an 'f.' (forte) in the lower left. The paper shows signs of wear, with some staining and a slightly irregular edge. The handwriting is in dark ink, and the overall appearance is that of an early manuscript or a composer's sketch.



A page of handwritten musical notation on aged, yellowed paper. The score consists of ten staves. The top staff is a treble clef with a complex melodic line featuring many sixteenth and thirty-second notes, some with triplets. The second and third staves are also in treble clef, with the second staff having a key signature of one sharp (F#) and a common time signature. The fourth staff is a bass clef. The fifth and sixth staves are treble clef, with the sixth staff showing some crossed-out or heavily scribbled-out passages. The seventh staff is a bass clef with a key signature of one sharp. The eighth staff is a treble clef. The ninth and tenth staves are bass clef, with the tenth staff ending in a double bar line and a fermata. There are some handwritten annotations and corrections throughout the score, including a '2' above a measure in the second staff and a '3' above a measure in the fifth staff. The paper shows signs of age, including foxing and some staining.



7



*da Capo Allegra et fero*

*Tutti*

*Re G. 2.*

*Tutti*

*Tutti da Capo*

*pizz.*

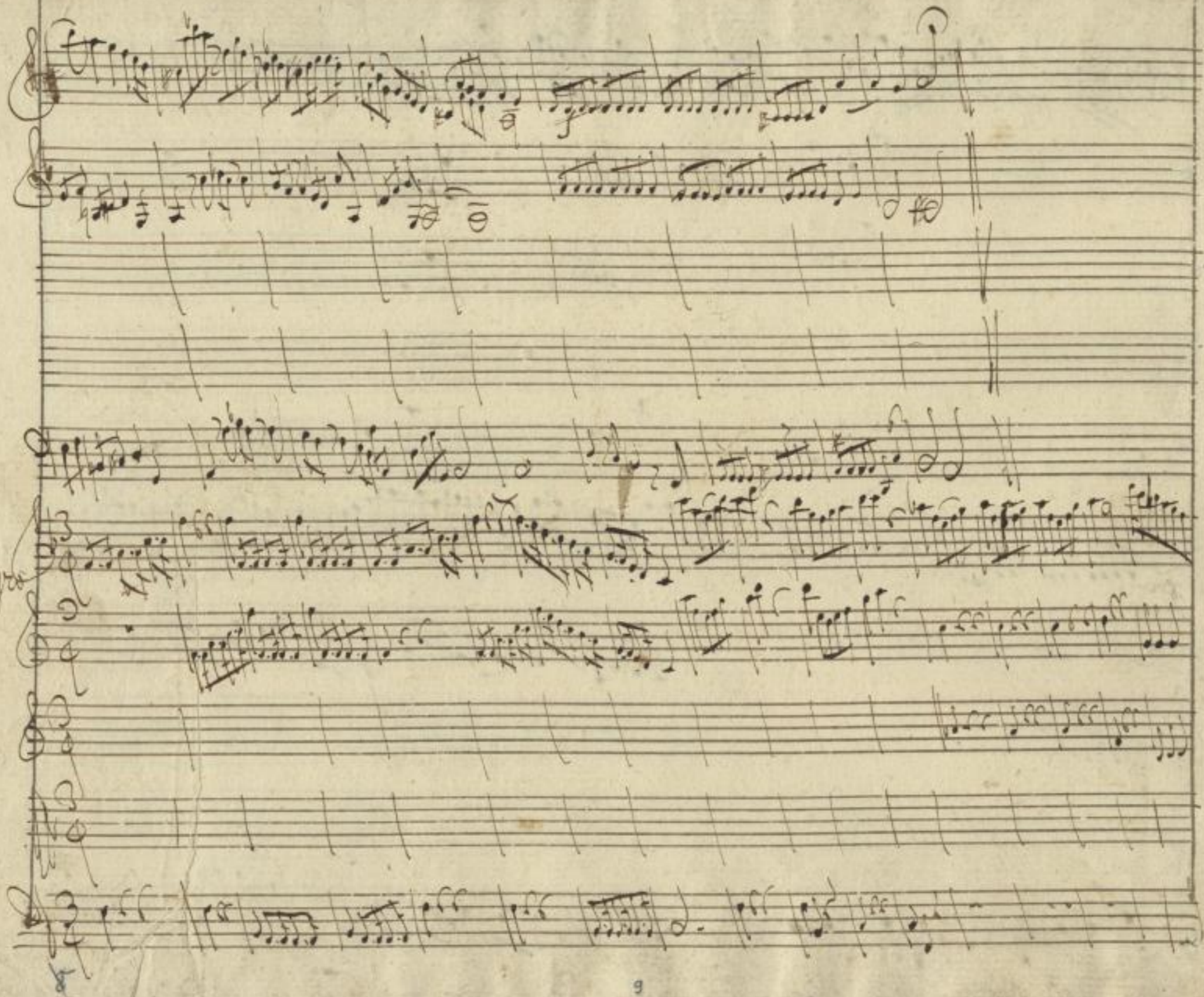
*6*

*#*





Handwritten musical score on aged paper, featuring multiple staves of music. The notation includes various notes, rests, and clefs, characteristic of 18th-century manuscript notation. The score is organized into systems, with some staves containing complex rhythmic patterns and others appearing to be empty or partially written. A small number '9' is visible at the bottom center of the page.



Handwritten text or markings on the right margin of the page, possibly a library or archival reference number.

*Allegro*



Handwritten musical score on aged paper, featuring ten staves of music. The notation is dense and includes various musical symbols such as clefs, notes, rests, and bar lines. The paper shows signs of age, including discoloration and some staining.





Handwritten text at the top of the page, possibly a title or reference number.

A page of handwritten musical notation on ten staves. The notation is dense and includes various note values, rests, and clefs. The paper is aged and shows some staining. The handwriting is in dark ink.







*Allegro*

8



Concerto del Sig. Tartini

Handwritten musical notation on two staves, featuring dense, intricate notes and rests.

Handwritten musical notation on a single staff, showing a series of notes and rests.

Handwritten musical notation on a single staff, showing a series of notes and rests.

Handwritten musical notation on a single staff, showing a series of notes and rests.

Handwritten musical notation on a single staff, showing a series of notes and rests.

Handwritten musical notation on a single staff, showing a series of notes and rests.

Handwritten musical notation on a single staff, showing a series of notes and rests.

Handwritten musical notation on a single staff, showing a series of notes and rests.

Handwritten musical notation on a single staff, showing a series of notes and rests.

Mus. 2456-0-15

