

L'ARBRE ENCHANTÉ

OPÉRA COMIQUE EN UN ACTE

PAR VADÉ

Mis en Musique

Par



GLUCK

Représenté pour la première fois par les  
Comédiens Italiens, Le 27. Février 1775.

PRIX 2 4<sup>s</sup>

A PARIS

Chez Des Lauriers, M.<sup>d</sup> de Papier, rue S.<sup>t</sup> Honoré,  
à côté de celle des Prouvaires.





Ouverture

N<sup>o</sup> I

*allegro*

*alto*

Musical score for the first movement of the Ouverture. It consists of 11 staves of music. The first staff begins with a treble clef, a key signature of one flat (B-flat), and a common time signature (C). The tempo is marked *allegro*. The first staff has a dynamic marking of *f* (forte) and includes the word *alto* above the notes. The second staff has dynamic markings of *f* and *p* (piano). The third staff has a dynamic marking of *f*. The fourth staff has a dynamic marking of *p*. The fifth staff has a dynamic marking of *p*. The sixth staff has a dynamic marking of *p*. The seventh staff has a dynamic marking of *p*. The eighth staff has a dynamic marking of *p*. The ninth staff has a dynamic marking of *p*. The tenth staff has a dynamic marking of *p*. The eleventh staff has a dynamic marking of *p*. The music is written in a single system with 11 staves.

*tempo di minuetto*

N<sup>o</sup> II

Musical score for the second movement of the Ouverture. It consists of two staves of music. The first staff begins with a treble clef, a key signature of one flat (B-flat), and a 2/4 time signature. The tempo is marked *tempo di minuetto*. The second staff continues the melody. Both staves end with a double bar line.



*alto*

F

*4* *practicissimo*

P

F

F

F

P

F

P

F

P

F

P



*Andante*  
N<sup>o</sup>. III  
*gracioso*

P

*cres*

P

*cres*

8



*dont la jalousie est*  
*extreme*  
N. IV *Moderato* *alto*

*usez d'un peu d'adresse*  
N. V. *allegretto* *Canto*

*le desir que j'ai de la voir*  
N. VI *andante gracioso*



*alto*

Musical notation for the first piece, consisting of four staves of music. The notation includes various note values, rests, and bar lines.

*seraye un crime de l'amour*  
 N. VII

*allegro*

Musical notation for the second piece, first staff, featuring a treble clef and a 3/8 time signature.

*canto*

Musical notation for the second piece, second staff.

*adagio allegro*

Musical notation for the second piece, third staff.

Musical notation for the second piece, fourth staff.

*recitatif*

*Fin.*

*P*

Musical notation for the second piece, fifth staff, ending with a double bar line.

*Son de l'amour le plus bel ornement*  
 N. VIII

*gracioso*

*da capo al Segno*

*canto*

Musical notation for the third piece, first staff, featuring a treble clef and a 3/4 time signature.

Musical notation for the third piece, second staff.

Musical notation for the third piece, third staff.







*alto*

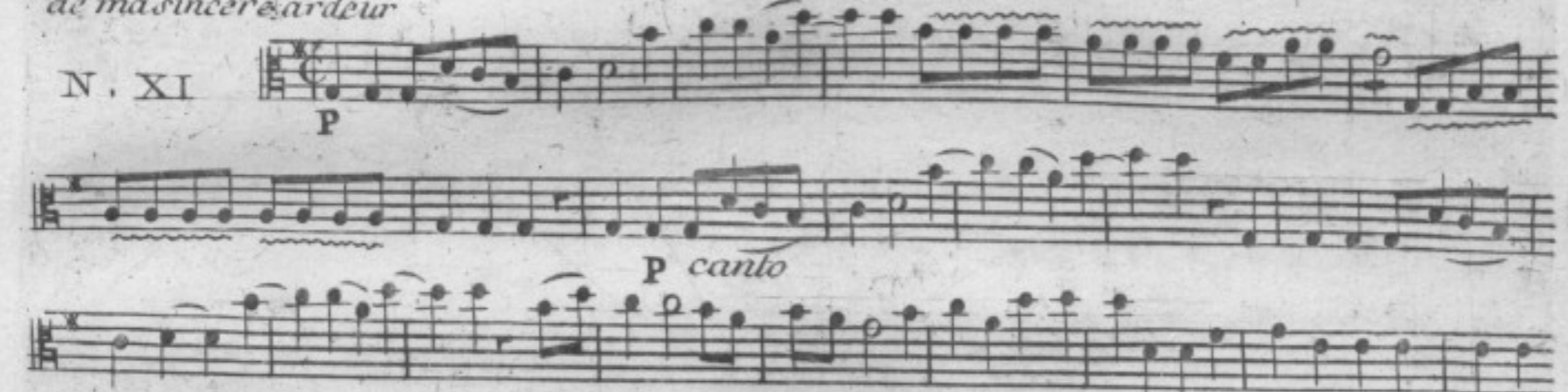
7



*de ma sincere ardeur*

N. XI

*P*



*P canto*



*F*

*P*



8  
eh. bien thomas  
N. XII  
*allegro*  
*Moderato*  
*canto*

il est dans le delire  
N. XIII  
*allegro*  
*presto*  
P F F F P  
F F

la plaisante  
avanture  
N. XIV  
*poco moderato*  
*pizzicato*  
P  
*colarco*



alto

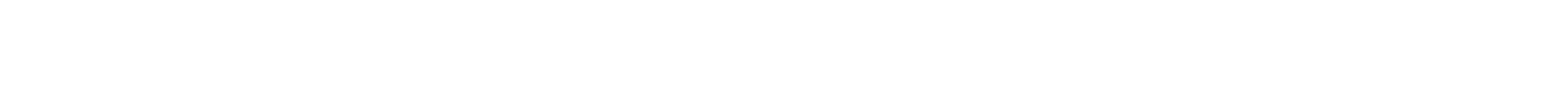
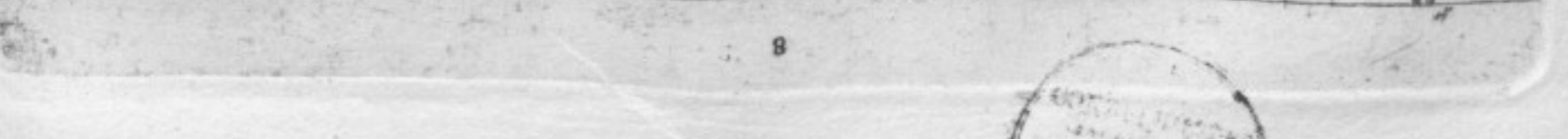
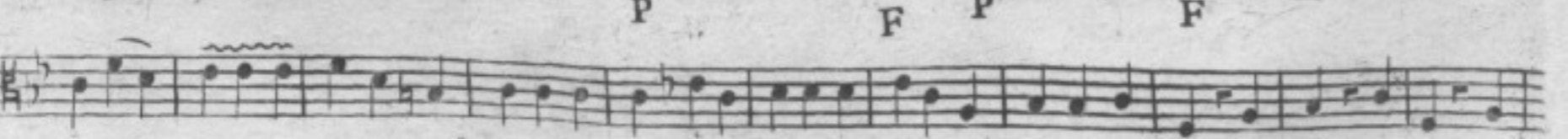
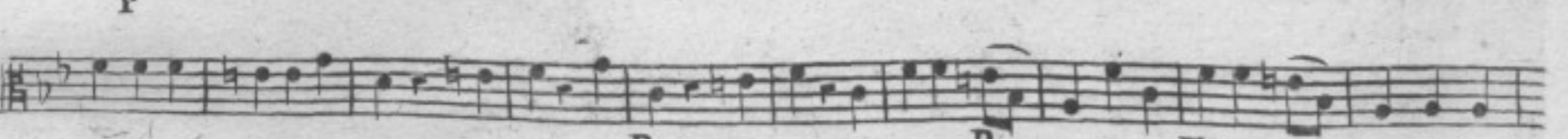
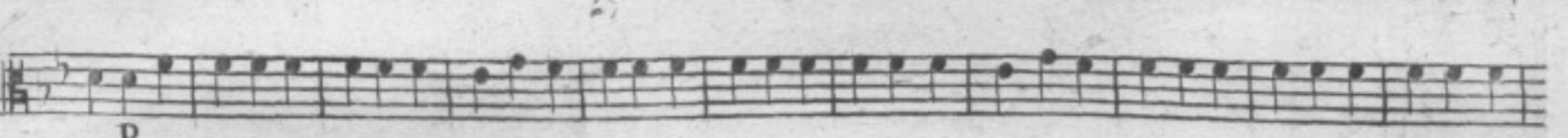
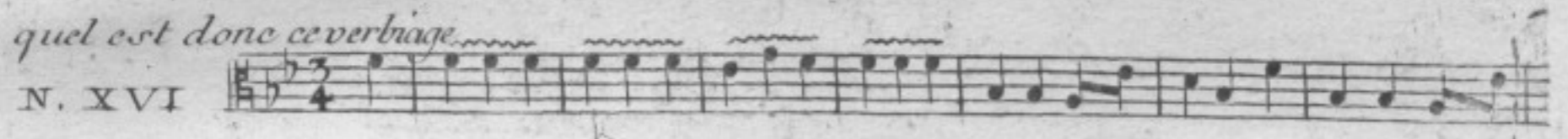
9



*c'est un arbre Enchanté*

N. XV.

*allegretto*



8





10.

*leuvement d'une innocente*

*ilto*

*canto*

N XVII

*andante F*

*P*

*on sifle*

*pizzicato*

*colarco*

*on sifle*

*on sifle*

*pizzicato*

*on sifle*

*malheureux poirier chœur*

N. XVIII

*anime*

*I*

*3*

*2*

*7*

*2*

*I*

*P*

*8*