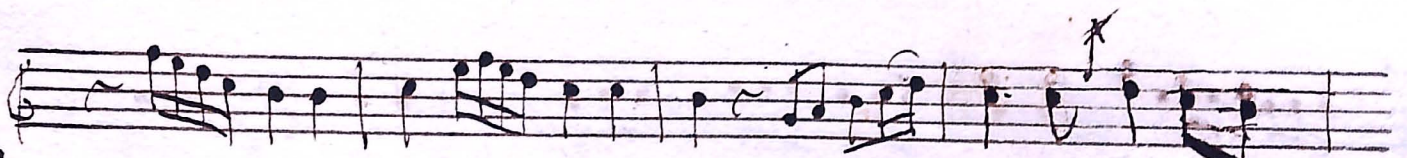

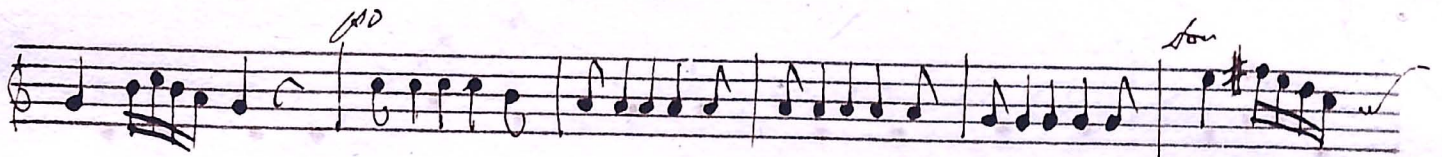


Qui habitat. a 3. Voci Con Stru.

Violino Secondo

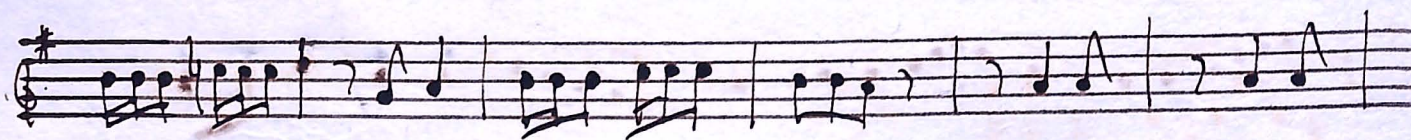
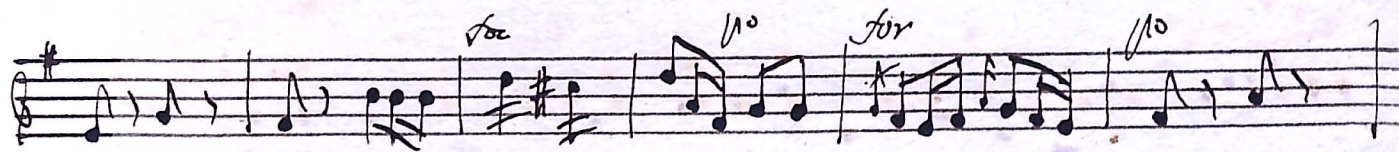
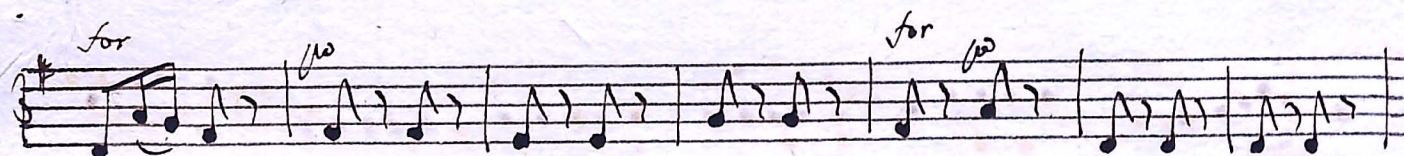
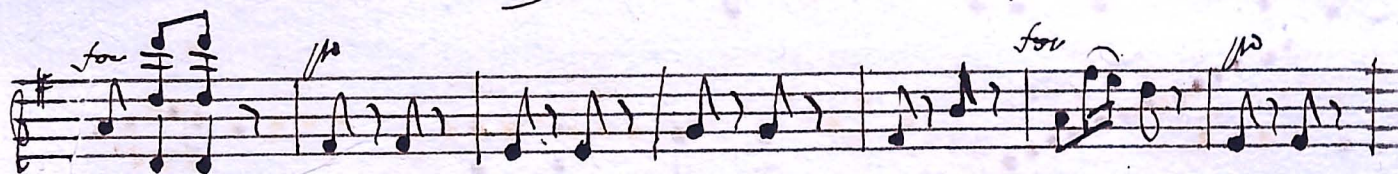
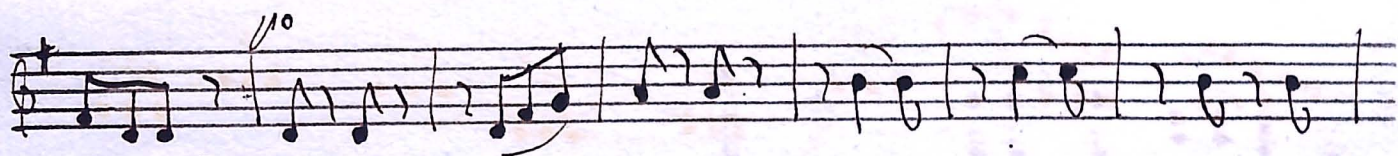
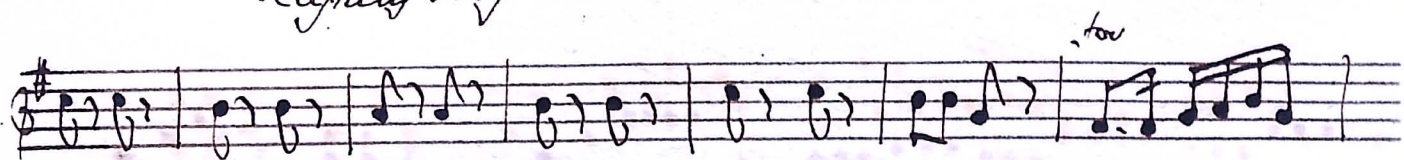
70ms. cresc.

Allegro. 



Voltri

S 13A/11



Handwritten musical notation on a single staff. The key signature has one sharp (F#). The notation includes eighth and sixteenth notes, some beamed together. Dynamic markings include *ff*, *fr.*, and *ff*.

Handwritten musical notation on a single staff. The key signature has one sharp (F#). The notation includes eighth and sixteenth notes, some beamed together. A dynamic marking of *ff* is present.

Handwritten musical notation on a single staff. The key signature has one sharp (F#). The notation includes eighth and sixteenth notes, some beamed together. Dynamic markings include *ff* and *ff*.

Handwritten musical notation on a single staff. The key signature has one sharp (F#). The notation includes eighth and sixteenth notes, some beamed together. A dynamic marking of *ff* is present.

Handwritten musical notation on a single staff. The key signature has one sharp (F#). The notation includes eighth and sixteenth notes, some beamed together. A dynamic marking of *ff* is present.

Handwritten musical notation on a single staff. The key signature has one sharp (F#). The notation includes eighth and sixteenth notes, some beamed together. Dynamic markings include *ff* and *ff*.

Handwritten musical notation on a single staff. The key signature has one sharp (F#). The notation includes eighth and sixteenth notes, some beamed together. A dynamic marking of *ff* is present.

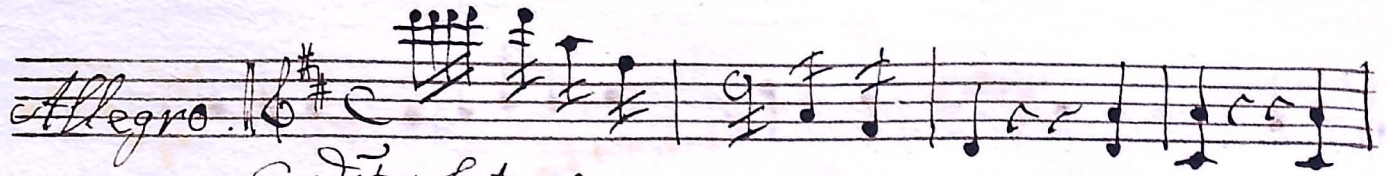
Handwritten musical notation on a single staff. The key signature has one sharp (F#). The notation includes eighth and sixteenth notes, some beamed together. Dynamic markings include *ff* and *ff*.

Handwritten musical notation on a single staff. The key signature has one sharp (F#). The notation includes eighth and sixteenth notes, some beamed together. Dynamic markings include *ff*, *ff*, *ff*, and *ff*.

Handwritten musical notation on a single staff. The key signature has one sharp (F#). The notation includes eighth and sixteenth notes, some beamed together. It ends with a double bar line, the tempo marking *109.*, and the signature *Zobko*.

for

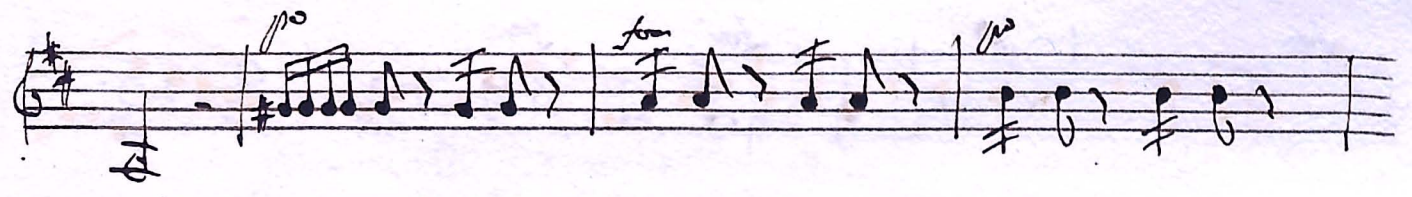
scuto circumdabit

Allegro 

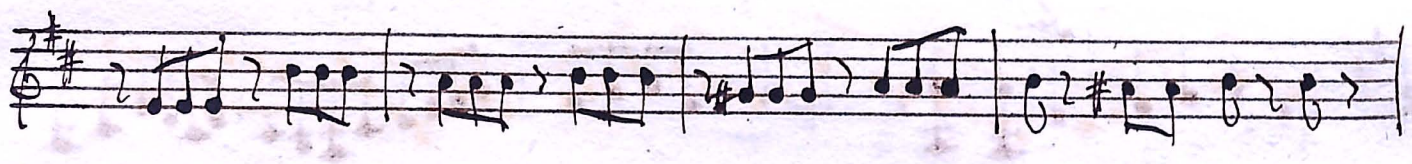
Cadēta latera.

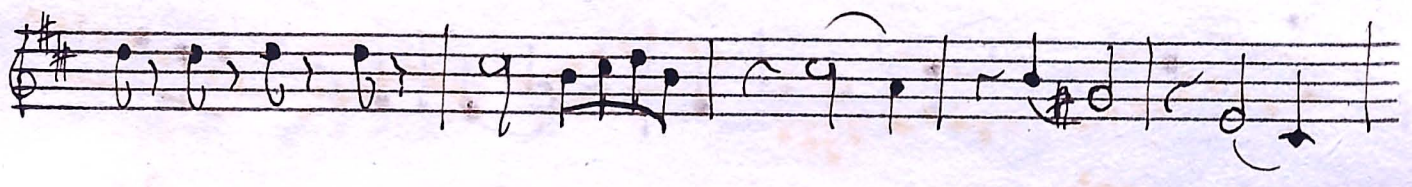


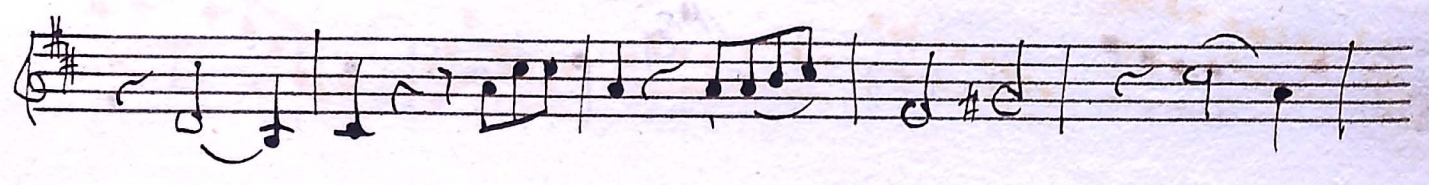


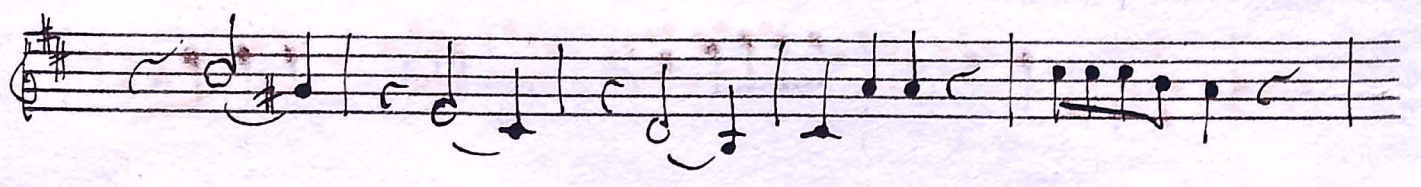


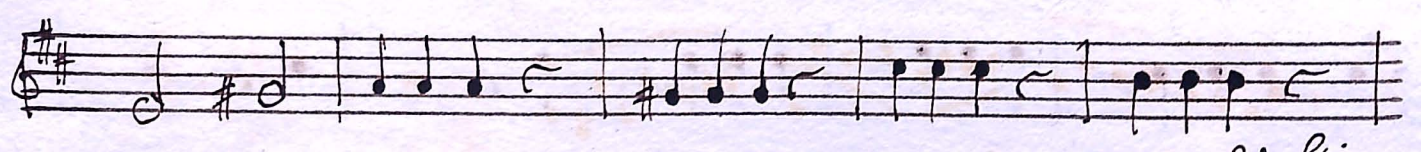




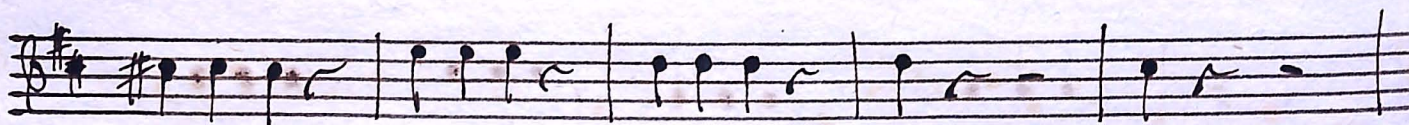
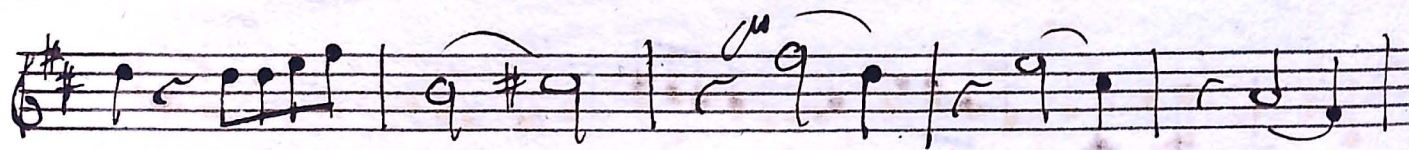
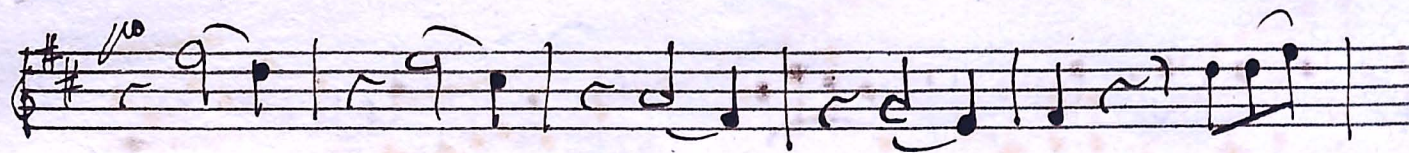
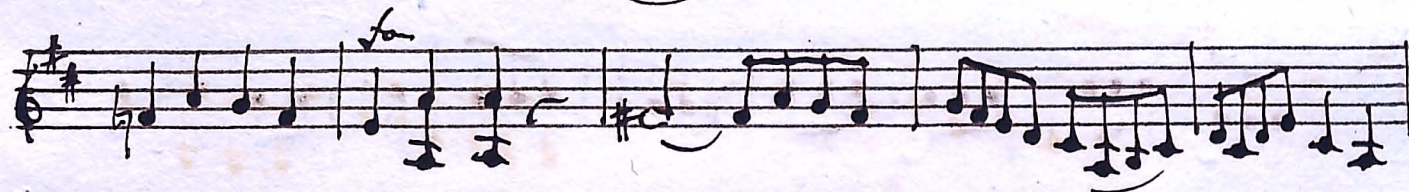
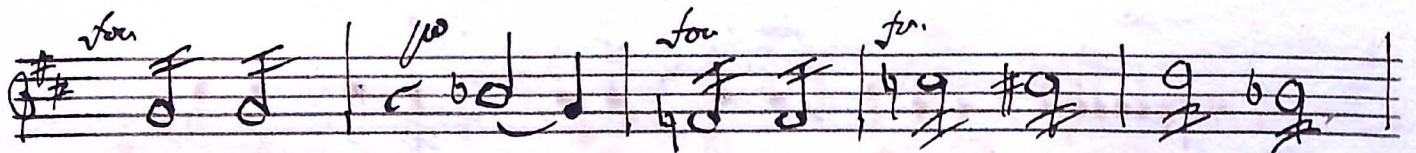
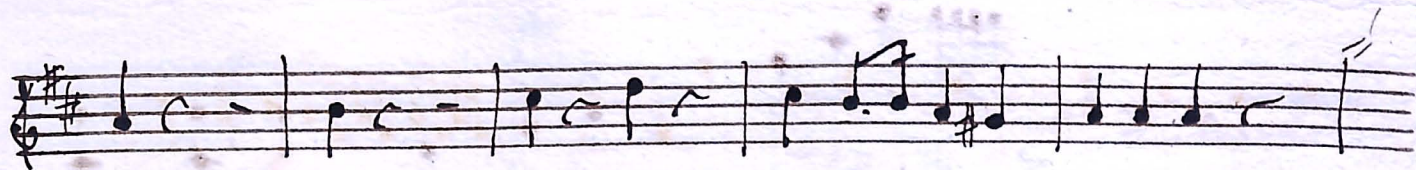


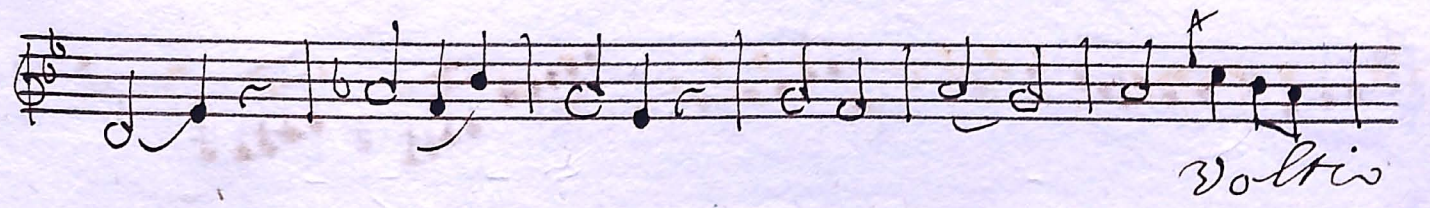
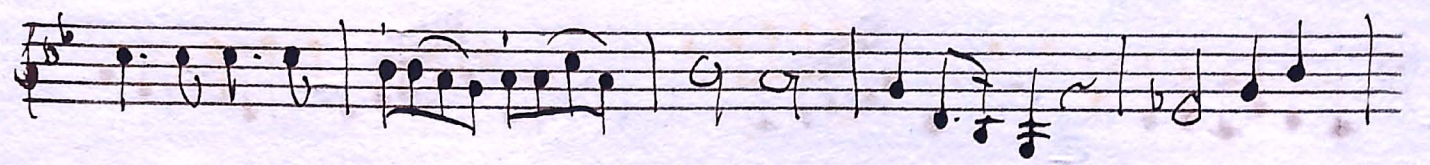
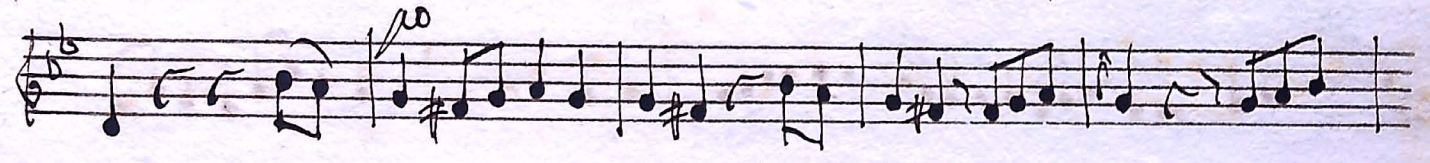
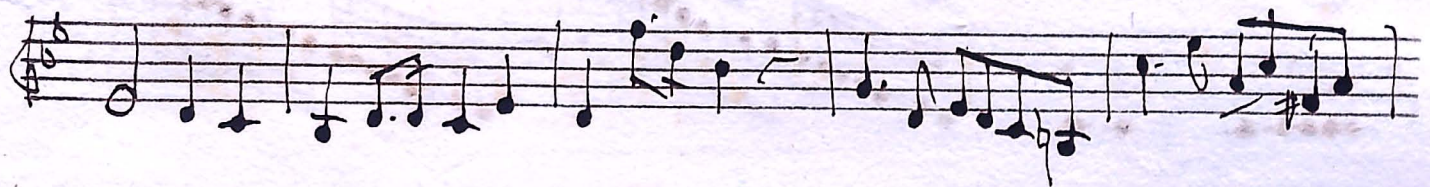
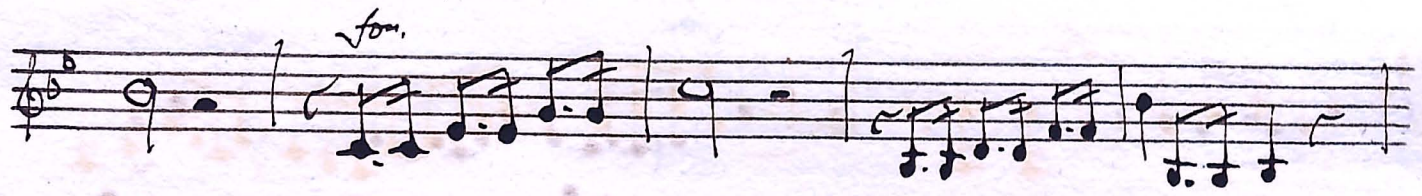
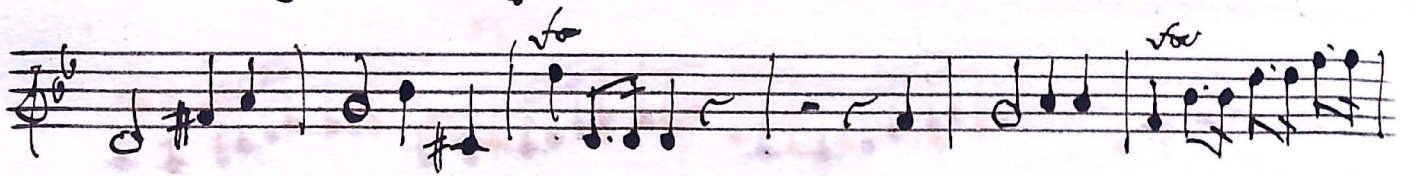
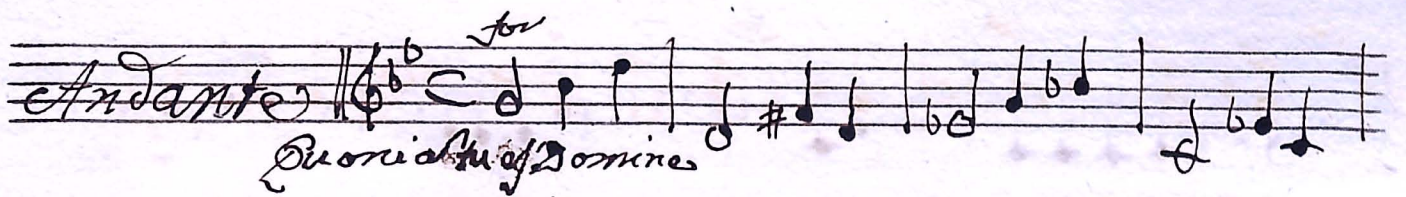
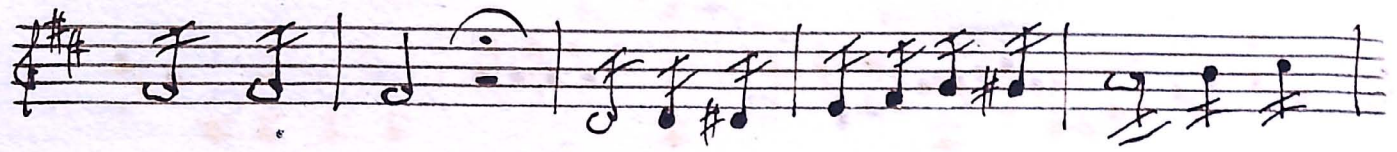
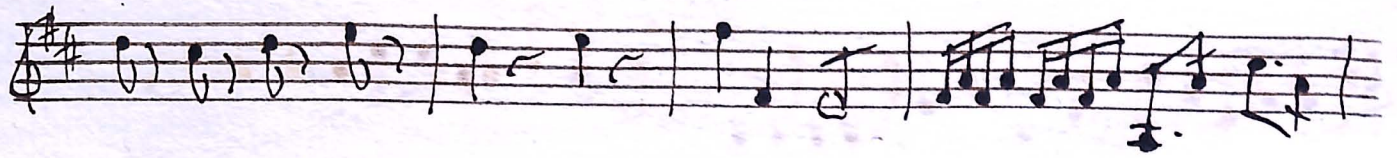


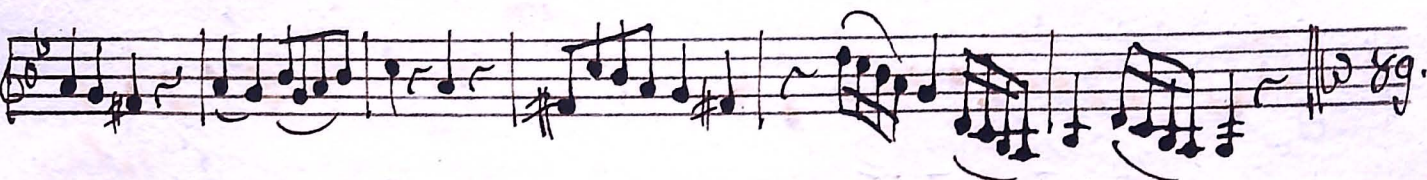
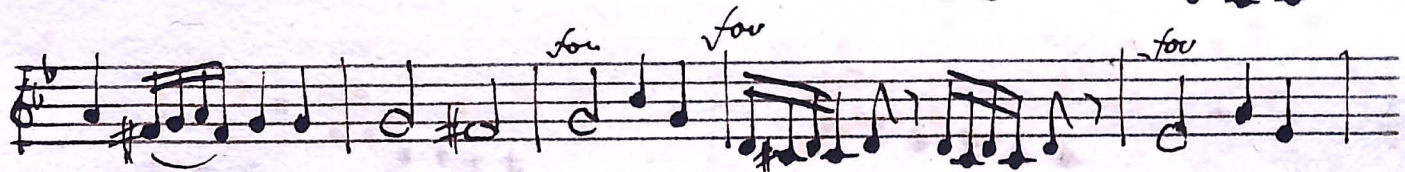
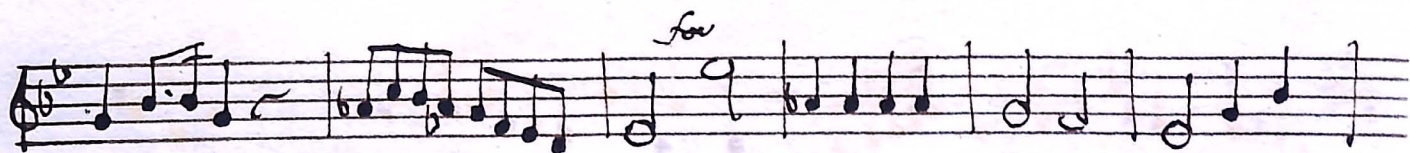




Volte

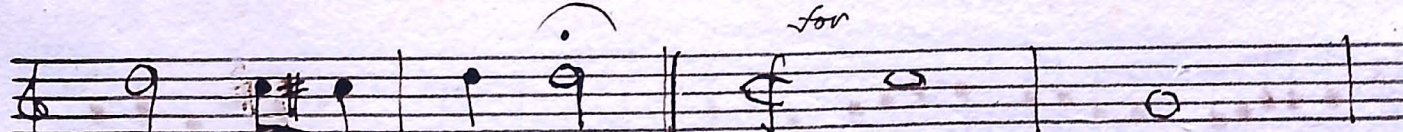
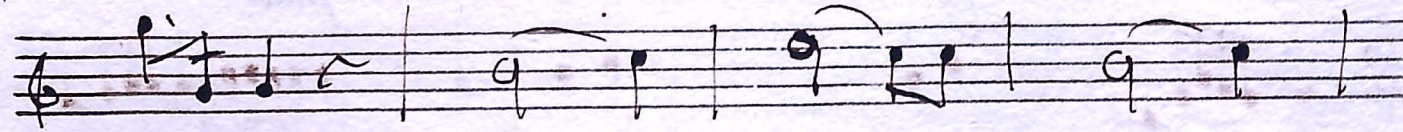
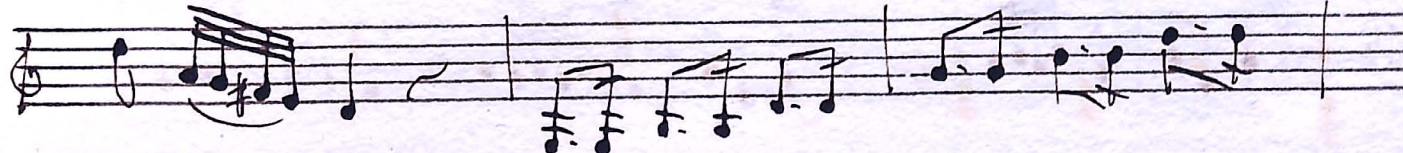
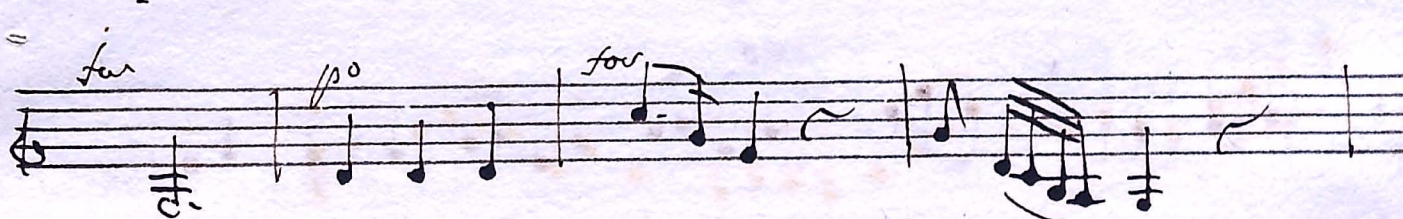
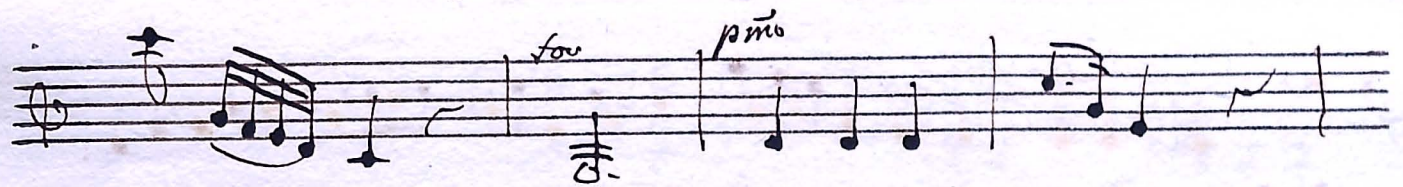
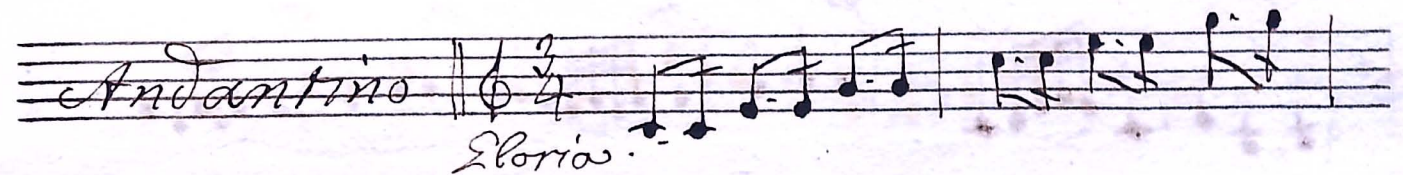
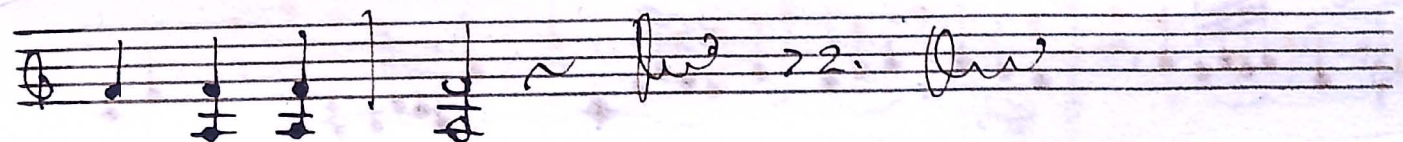
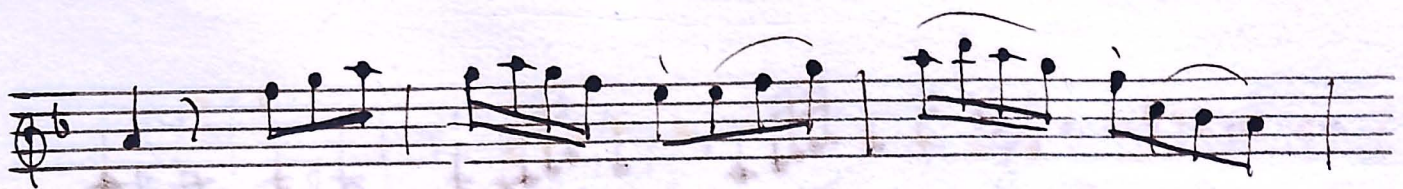


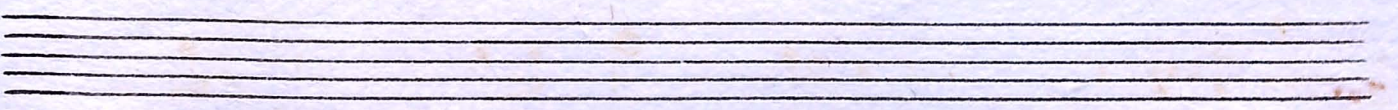
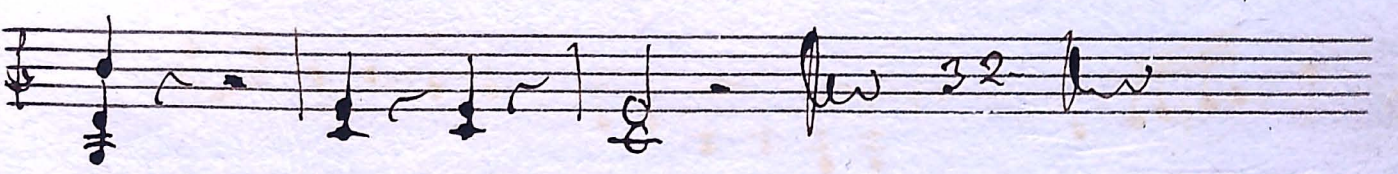
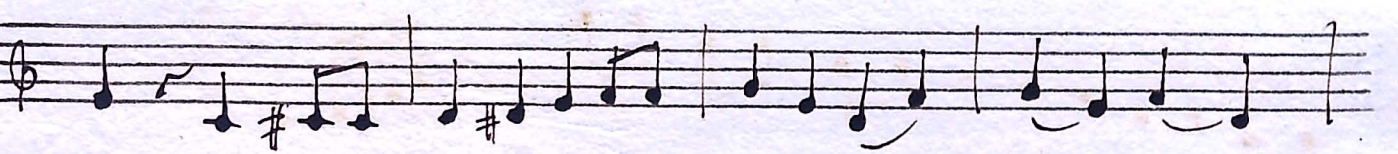
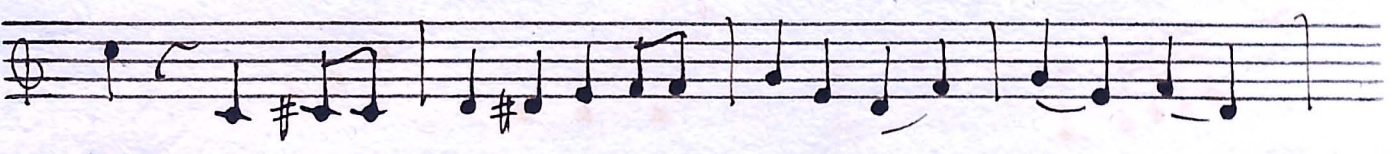
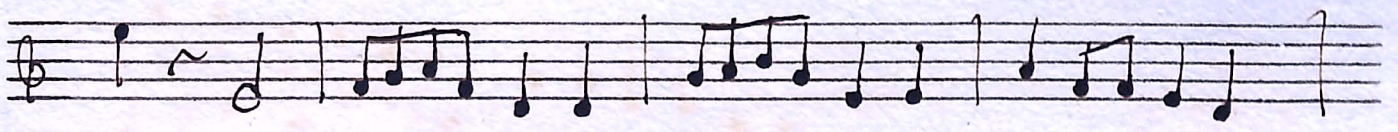
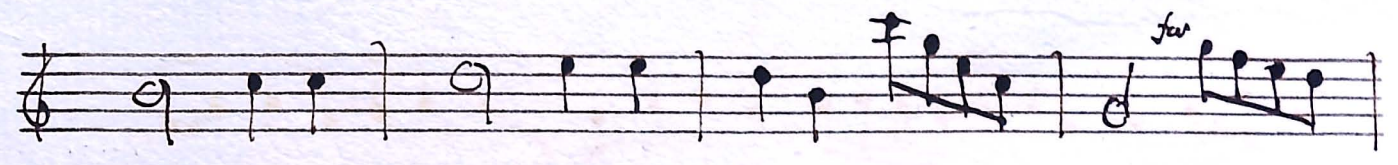




Andantino 3/4
clamabit ad me.

Volkis





We Say Deo. ~~~~~