

DOMENICO ZIPOLI

O Daliso, da quel dì che partisti

Cantata per soprano e basso continuo

Parti

A cura di

Luigi Cataldi

Edited by

Non-commercial copying welcome

La presente partitura è stata stampata impiegando solo software non commerciale (**T_EX**, la macro musicale **MusiX_TE_X** e i preprocessori **MTX** e **PMX**) e può essere copiata e distribuita liberamente purché senza scopo di lucro.

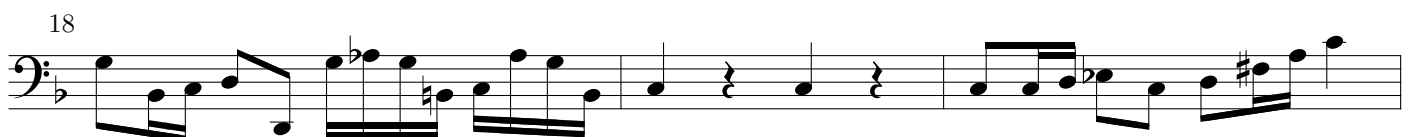
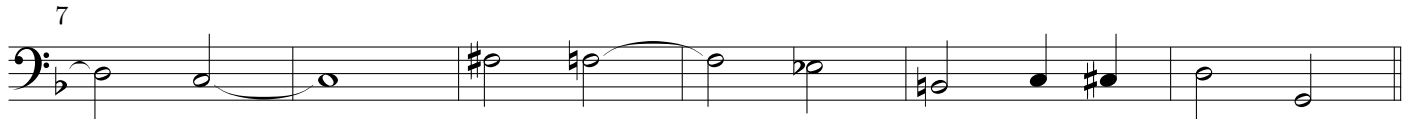
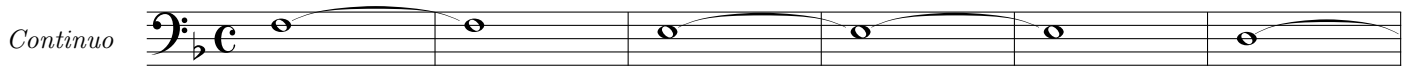
Critiche, suggerimenti e correzioni sono graditi e vanno inviati all'indirizzo luicatal@tin.it.

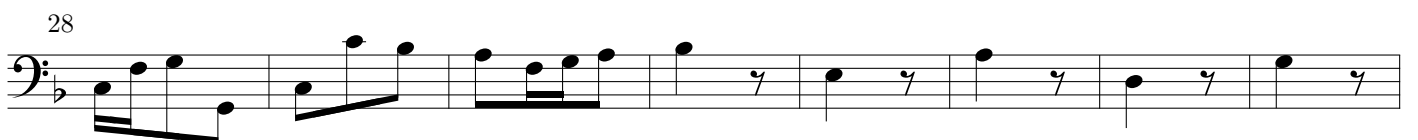
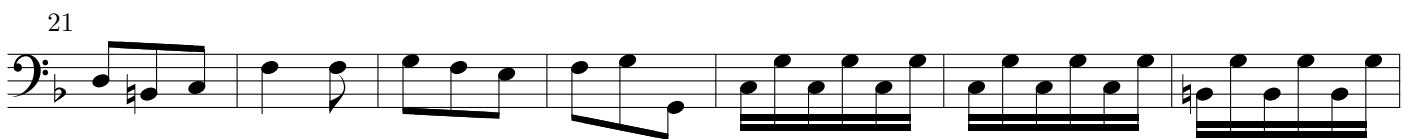
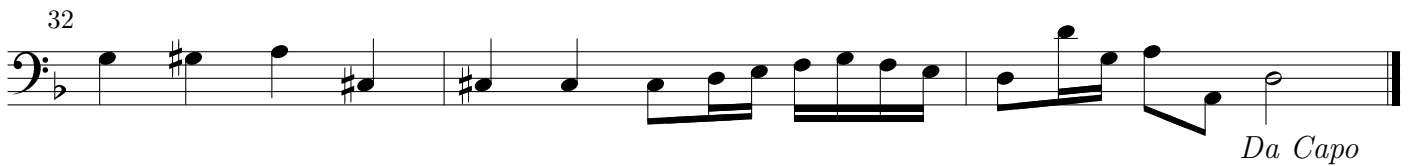
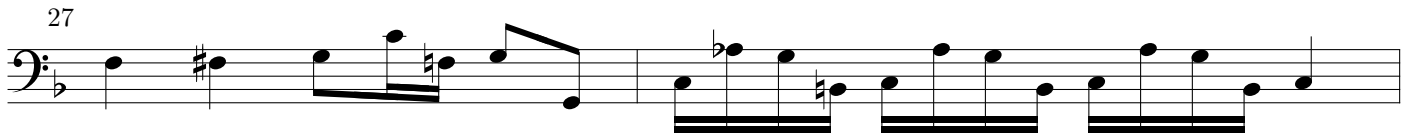
This score is printed using only free software (**T_EX**, the macro package **MusiX_TE_X** and the preprocessors **MTX** and **PMX**) and may be copied freely but only for non-commercial use.

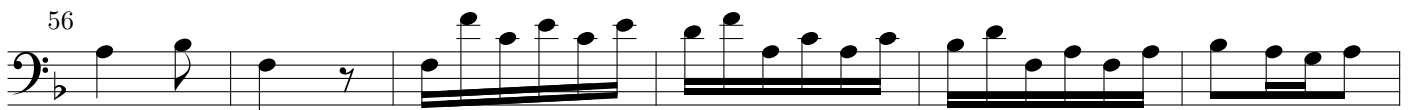
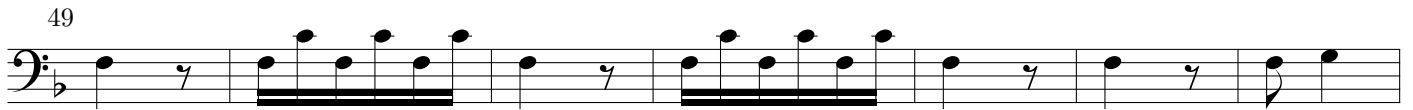
Criticism, suggestion and correction are welcome and may be sent to luicatal@tin.it.

O Daliso, da quel dì che partisti

Domenico Zipoli
(1688–1726)



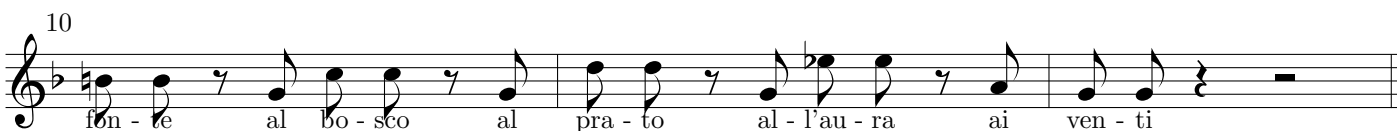
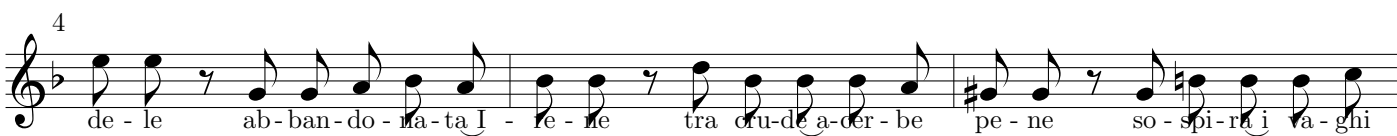
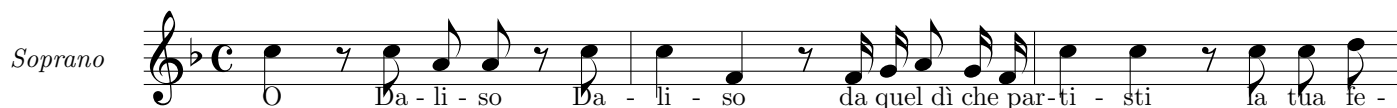




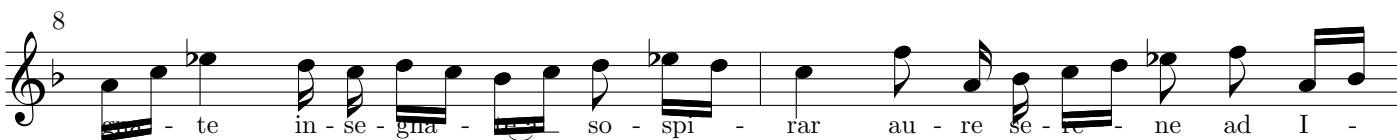
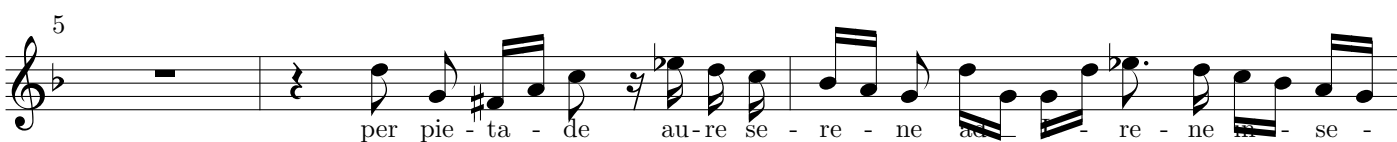
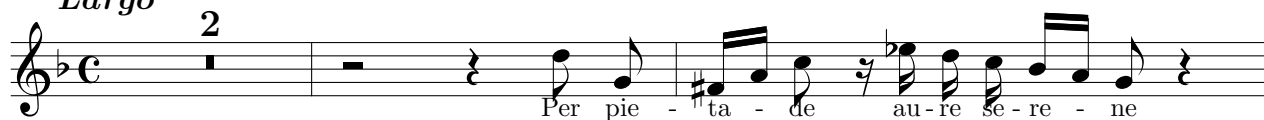
Da Capo

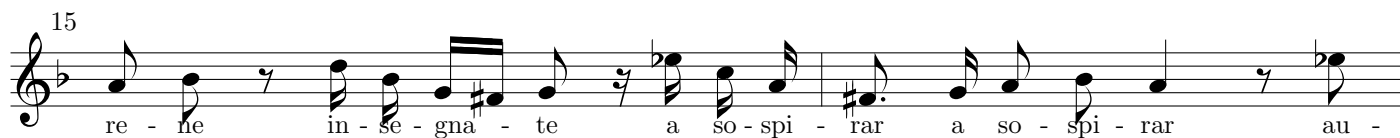
O Daliso, da quel dì che partisti

Domenico Zipoli
(1688–1726)



Largo



15

 re - ne in - se - gna - te a so - spi - rar a so - spi - rar au -

17

 re se - re - ne ad I - re - ne per pie - ta - de in - se - gna - te a so - spi - rar.

19

 pic - uel - se - gna - te a so - spi - rar

21

 ad I - re - ne a so - spi - rar. Deh mo -

24

 stra - te o fon - ti o fiu - mi a' miei lu - mi nuova i - de - a nuova i -

26

 a di la - cri - mar nuova i - de - a di la - cri - la - cri -

28

 mar Deh mo - stra - te o - ti o lu - mi a' miei lu - mi nuova ide - a nuova i -

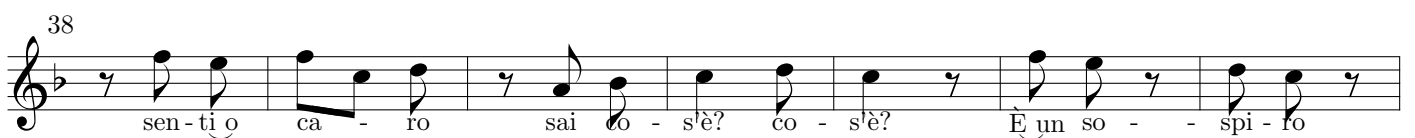
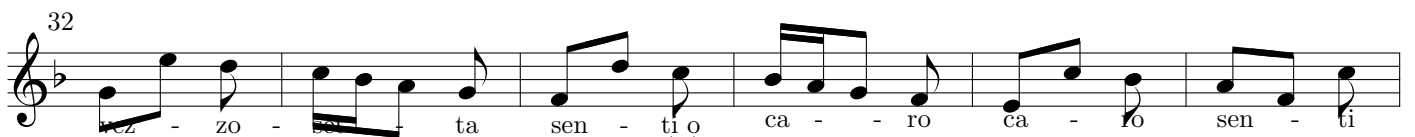
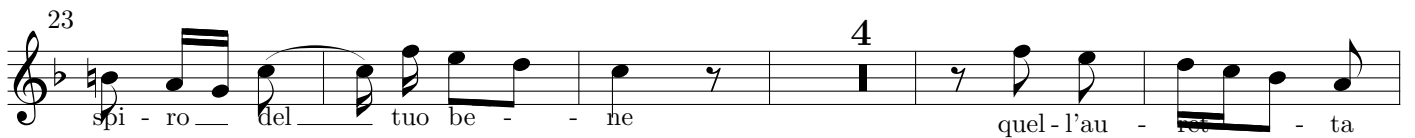
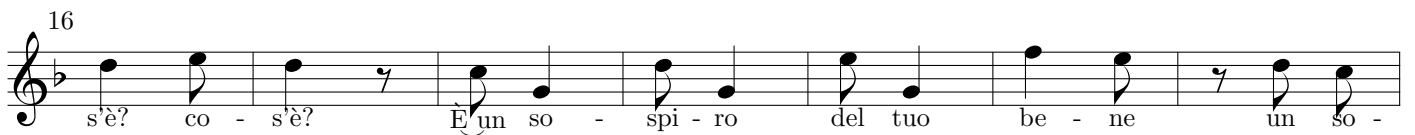
31

 de - a di la - cri - nuova i - de - a di la - cri - mar deh mostra - te o

33

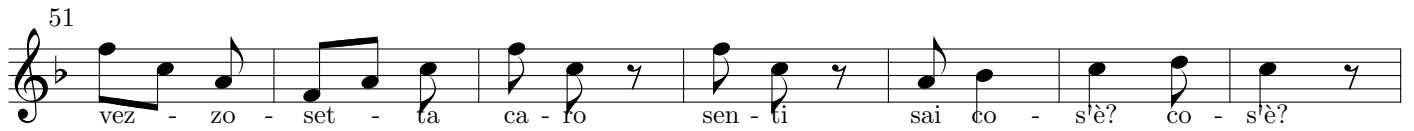
 fon - ti o fiu - mi a' miei lu - mi nuova i - de - a di la - cri - mar la - cri - mar

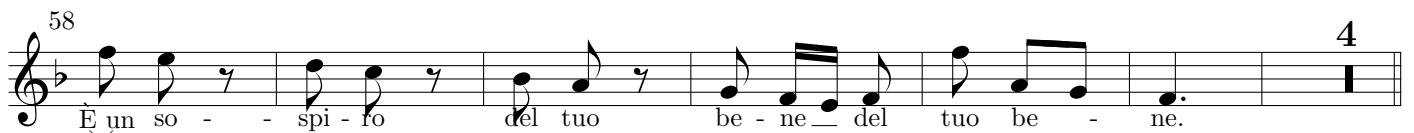
Da Capo



45

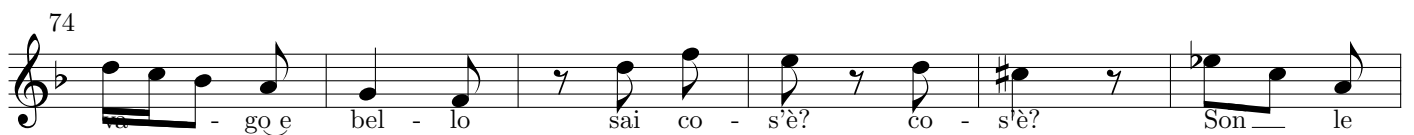
 del tuo be - ne - del tuo be - - ne quel - l'au - ret - ta

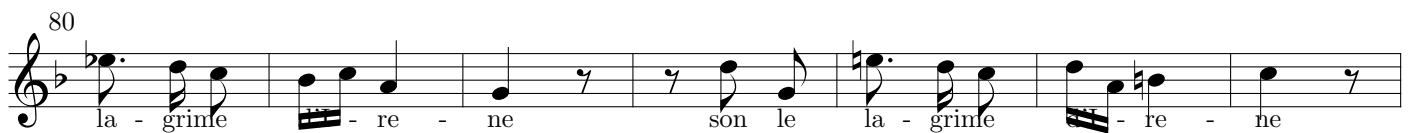
51

 vez - zo - set - ta ca - fo sen - ti sai co - s'è? co - s'è?

58

 È un so - - spi - fo del tuo be - ne del tuo be - ne. 4

68

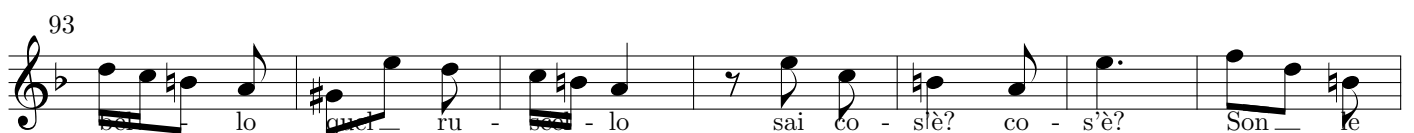
 Ve di o ca - fo quel ru - scel - lo quel ru - scel - lo


74

 - go e bel - lo sai co - s'è? co - s'è? Son - le

80

 la - grime - re - ne son le la - grime - re - ne

87

 Ve - di o ca - fo quel ru - scel - lo - go e

93

 lo quel ru - scel - lo sai co - s'è? co - s'è? Son - le

100

 la - gri-me - re - ne son le la - gri-me - re - ne

Da Capo