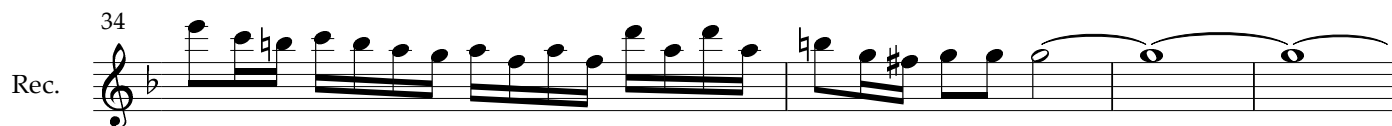
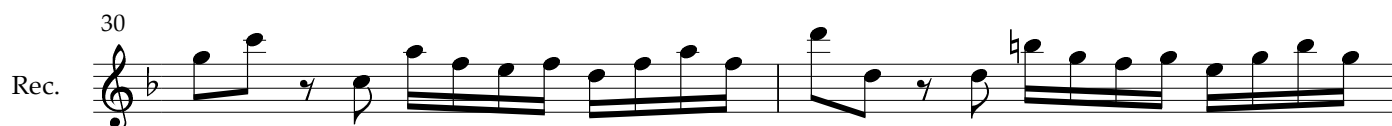
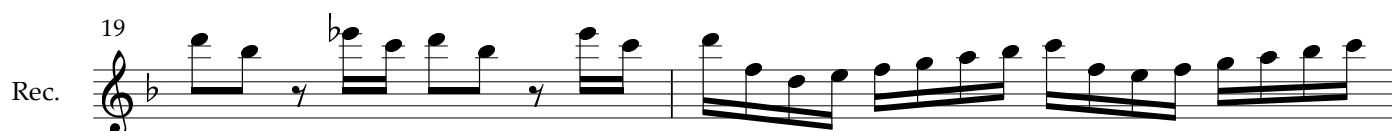
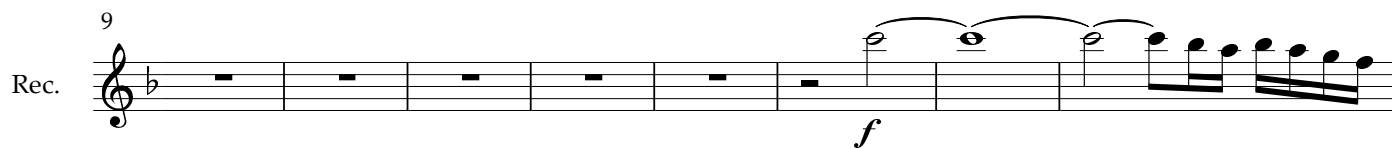


# Graupner - Recorder Concerto in F, Recorder

Allegro

Recorder in F




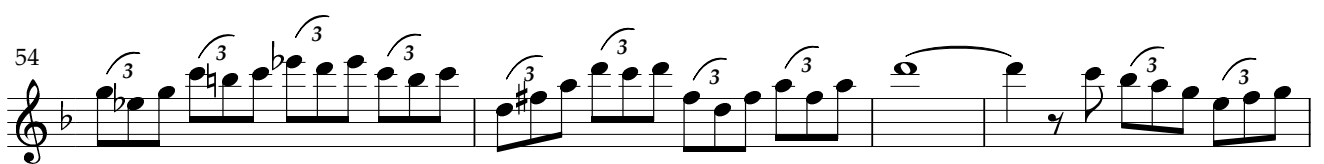
38  
Rec. 

41  
Rec. 

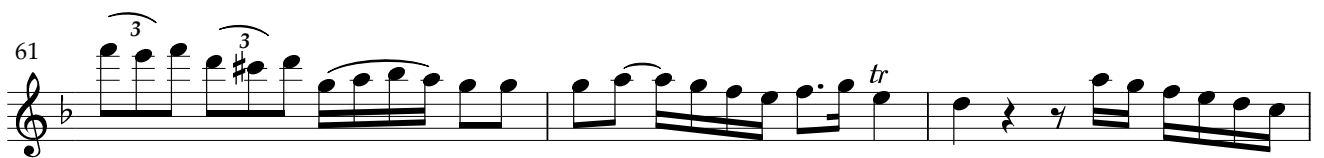
45  
Rec. 


48  
Rec. 

51  
Rec. 

54  
Rec. 

58  
Rec. 

61  
Rec. 

64  
Rec. 

67  
Rec. 

70  
Rec. 

73  
Rec.

76  
Rec.

79  
Rec.

82  
Rec.

85  
Rec.

88  
Rec.

93  
Rec.

101  
Rec.

105  
Rec. *Andante*  
*mp*

111

116

120

124

129

133

137

141

144

150

Allegro

Rec.

163

Rec.

171

Rec.

174

Rec.

177

Rec.

180

Rec.

185

Rec.

189

Rec.

192

Rec.

195

Rec.

199

Rec.

203

Rec.

207  
Rec. 

210  
Rec. 


214  
Rec. 


217  
Rec. 


223  
Rec. 

226  
Rec. 

229  
Rec. 

233  
Rec. 

238  
Rec. 

241  
Rec. 

246  
Rec. 

249  
Rec.

253  
Rec.

257  
Rec.

261  
Rec.

265  
Rec.

268  
Rec.

271  
Rec.

275  
Rec.

280  
Rec.

284  
Rec.

287  
Rec.

# Graupner - Recorder Concerto in F, Violin I

Violin I

Allegro

*f* *mp* *f* *mp* *tr*

3

Vln. I

6

Vln. I

*f*

8

Vln. I

10

Vln. I

*mp* *f*

13

Vln. I

*p* *tr*

16

Vln. I

*f*

19

Vln. I

21

Vln. I

23

Vln. I

*mp* *p*



26  
Vln. I

29  
Vln. I

32  
Vln. I

35  
Vln. I

37  
Vln. I

40  
Vln. I

42  
Vln. I

44  
Vln. I

47  
Vln. I

49  
Vln. I

51  
Vln. I

53  
Vln. I

55  
Vln. I

58  
Vln. I

61  
Vln. I

64  
Vln. I

67  
Vln. I

70  
Vln. I

73  
Vln. I

76  
Vln. I

80  
Vln. I

83  
Vln. I

86

Vln. I

89

Vln. I

92

Vln. I

95

Vln. I

98

Vln. I

99

Vln. I

105 *Andante*

Vln. I

pizz.  
*p*

110

Vln. I

115

Vln. I

120

Vln. I

125

Vln. I

130

Vln. I

135

Vln. I

140

Vln. I

145

Vln. I

150 *Allegro*  
Vln. I *f*

156

160

164

167 *p*

170

174 *mp*

178

181 *f*

184 *p* *f*

188 *p*

192  
Vln. I

197  
Vln. I

201  
Vln. I

204  
Vln. I

208  
Vln. I

212  
Vln. I

216  
Vln. I

219  
Vln. I

222  
Vln. I

225  
Vln. I

228  
Vln. I

231  
Vln. I

*p*

235  
Vln. I

239  
Vln. I

244  
Vln. I

249  
Vln. I

254  
Vln. I

258  
Vln. I

262  
Vln. I

266  
Vln. I

271  
Vln. I

275  
Vln. I

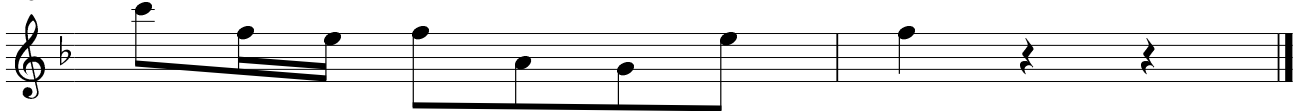
280  
Vln. I



284  
Vln. I



287  
Vln. I





# Graupner - Recorder Concerto in F, Violin II

Violin II *Allegro*

4 *mp* *f* *mp* *f*

7 *f*

10 *mp* *f*

13 *p* *tr*

17 *f*

20

23 *mp* *p*

26

30

33  
Vln. II

36  
Vln. II

38  
Vln. II

41  
Vln. II

44  
Vln. II

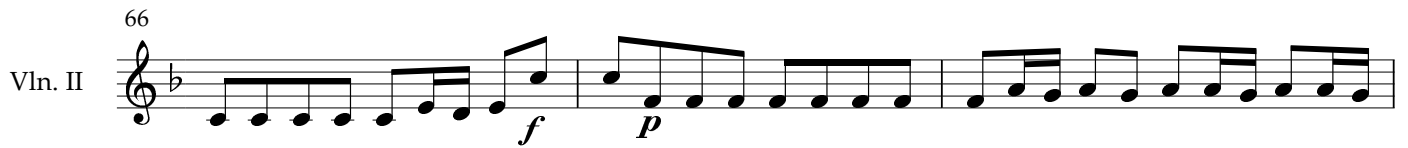
46  
Vln. II

51  
Vln. II

56  
Vln. II

59  
Vln. II

62  
Vln. II

66  
Vln. II 

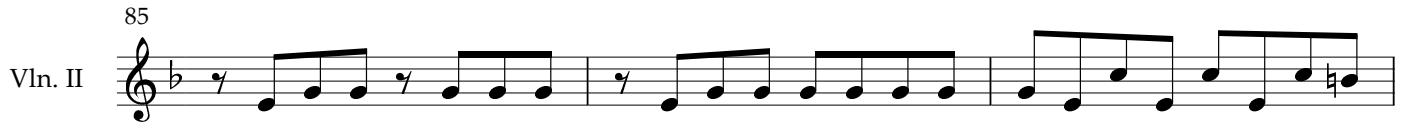
69  
Vln. II 

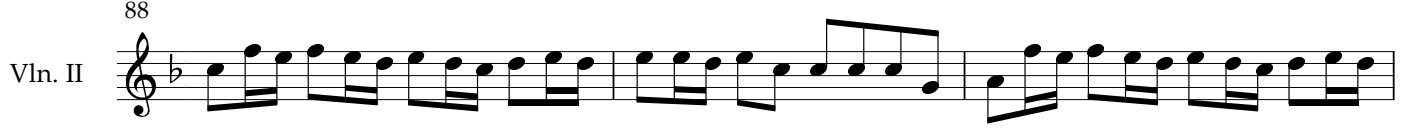
72  
Vln. II 

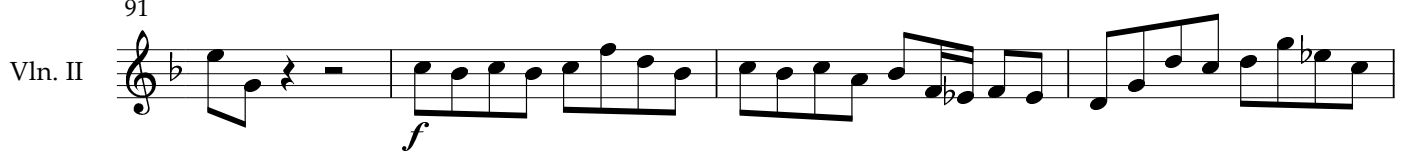
76  
Vln. II 

79  
Vln. II 

82  
Vln. II 

85  
Vln. II 

88  
Vln. II 

91  
Vln. II 

95  
Vln. II 

98  
Vln. II 

101  
Vln. II

105  
Vln. II

Andante

pizz.  
*p*

111  
Vln. II

116  
Vln. II

120  
Vln. II

124  
Vln. II

129  
Vln. II

134  
Vln. II

140  
Vln. II

145  
Vln. II

Allegro

150 Vln. II *f*

153 Vln. II

156 Vln. II

160 Vln. II

165 Vln. II

168 Vln. II *mp*

174 Vln. II

178 Vln. II *f*

183 Vln. II *p*

187 Vln. II *f* *p*

191 Vln. II

196  
Vln. II

200  
Vln. II

204  
Vln. II

208  
Vln. II

213  
Vln. II

218  
Vln. II

222  
Vln. II

227  
Vln. II

232  
Vln. II

236  
Vln. II

240  
Vln. II

245  
Vln. II

250  
Vln. II

255  
Vln. II

258  
Vln. II

Tutti

262  
Vln. II

268  
Vln. II

272  
Vln. II

276  
Vln. II

280  
Vln. II

285  
Vln. II

# Graupner - Recorder Concerto in F, Viola

Allegro

Viola

Vla.

Vla.

Vla.

Vla.

Vla.

Vla.

Vla.

Vla.

Vla.

Vla.

*mp*

*f*

*mp*

*f*

*f*

*mp*

*f*

*mp*

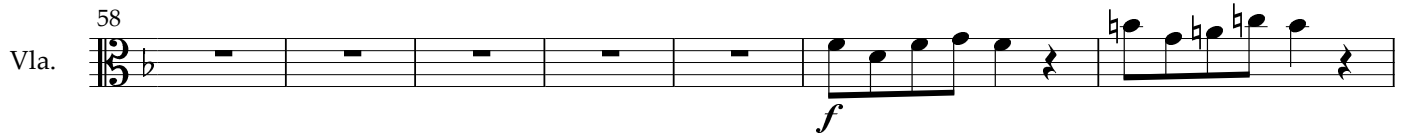
*mp*

*mp*

*mp*

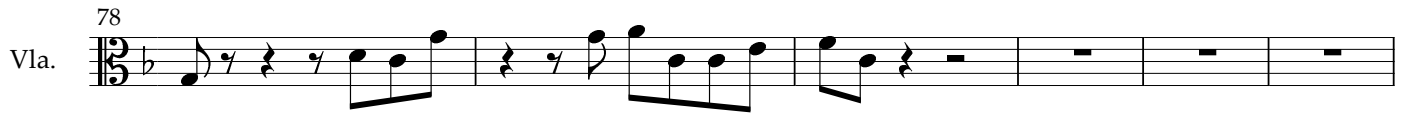


50  
Vla. 

58  
Vla. 

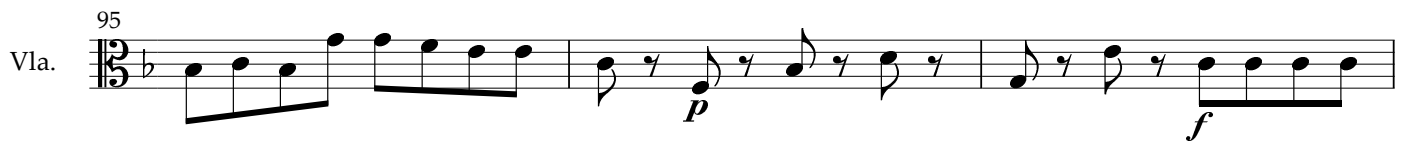
65  
Vla. 

72  
Vla. 

78  
Vla. 

84  
Vla. 

91  
Vla. 

95  
Vla. 

98  
Vla. 

101  
Vla. 


105 Andante  
Vla. 


112 


118 

123 

128 

134 

141 

146 

150 Allegro

Vla.

Vla.

Vla.

Vla.

Vla.

Vla.

Vla.

Vla.

Vla.

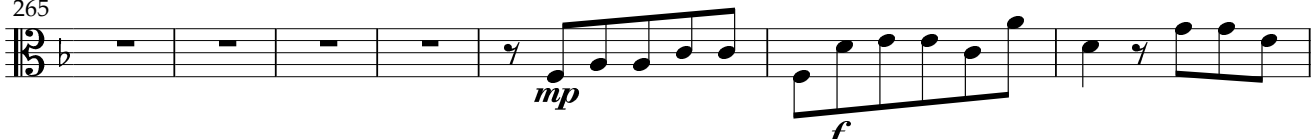
Vla.


Vla.

Vla.

250  
Vla. 

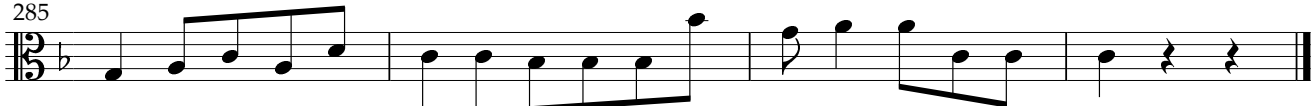
258  
Vla. 

265  
Vla. 

272  
Vla. 


277  
Vla. 

281  
Vla. 

285  
Vla. 

# Graupner - Recorder Concerto in F, Basso

Allegro

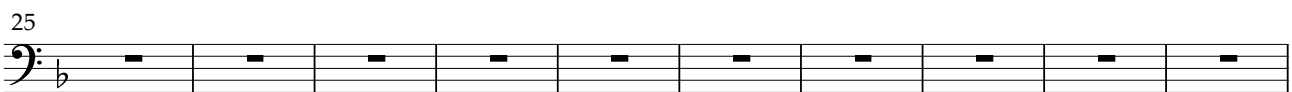
Basso 

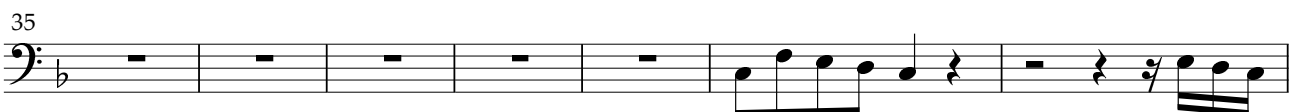
Basso 

Basso 

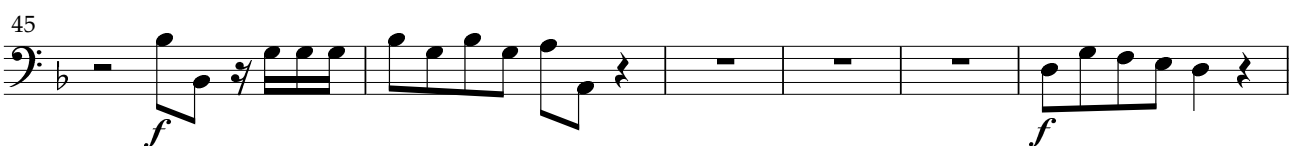
Basso 

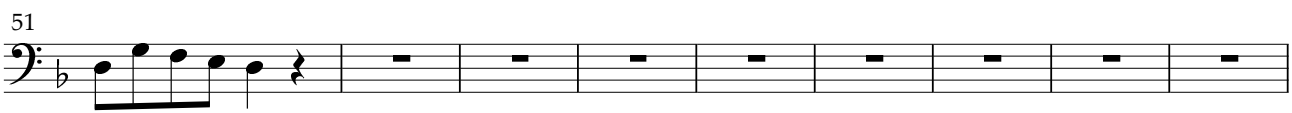
Basso 


Basso 

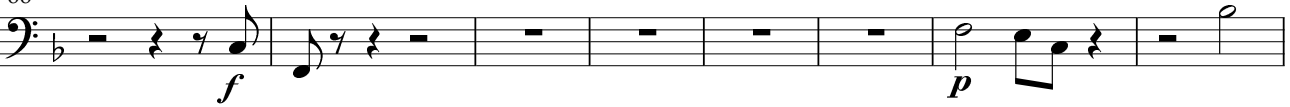
Basso 


Basso 

Basso 

Basso 

Basso 


66  
Basso  *f* *p*

74  
Basso  *p*

79  
Basso 

85  
Basso 

90  
Basso  *f*

95  
Basso  *p* *f*

98  
Basso 

101  
Basso 

105 Andante

Basso

pizz.  
*p*

112

Basso

119

Basso

126

Basso

133

Basso

140

Basso

146

Basso

150 Allegro

Basso

Musical staff for Bassoon, measures 150-158. The staff shows a series of rests followed by a melodic phrase starting at measure 158 with a forte (*f*) dynamic marking.

Basso

Musical staff for Bassoon, measures 159-162. The staff shows a continuous melodic line with eighth notes and sixteenth notes.

Basso

Musical staff for Bassoon, measures 163-168. The staff shows a melodic line with some rests and eighth notes.

Basso

Musical staff for Bassoon, measures 169-180. The staff shows a series of rests.

Basso

Musical staff for Bassoon, measures 181-183. The staff shows a melodic line starting with a forte (*f*) dynamic marking.

Basso

Musical staff for Bassoon, measures 184-189. The staff shows a melodic line with eighth notes and a forte (*f*) dynamic marking.

Basso

Musical staff for Bassoon, measures 190-202. The staff shows a series of rests.

Basso

Musical staff for Bassoon, measures 203-211. The staff shows a melodic line starting with a forte (*f*) dynamic marking.

Basso

Musical staff for Bassoon, measures 212-224. The staff shows a series of rests.

Basso

Musical staff for Bassoon, measures 225-229. The staff shows a melodic line starting with a forte (*f*) dynamic marking.

Basso

Musical staff for Bassoon, measures 230-237. The staff shows a melodic line with eighth notes and rests.

Basso

Musical staff for Bassoon, measures 238-247. The staff shows a series of rests followed by a melodic phrase.



248  
Basso

255  
Basso

261  
Basso

271  
Basso

276  
Basso

283  
Basso

285  
Basso