

PRELUDE in E MAJOR

(from: *Postludium for Organ*)
for Brass Quartet & Timpani

Score (02':05")

Karl Deigendesch (1839 - 1911)
Arr. Michel Rondeau

Moderato alla breve ♩ = 90

Trumpet in C 1

Trumpet in C 2

Trombone

Bass Trombone

Timpani

Detailed description: This system contains the first five measures of the score. The key signature is E major (three sharps) and the time signature is common time (C). The tempo is Moderato alla breve with a quarter note equal to 90 beats per minute. The Trumpet in C 1 part features a triplet of eighth notes in measure 3. The Trombone and Bass Trombone parts play sustained notes with slurs. The Timpani part has a tremolo in measure 1 and rests in measures 2-5.

C Tpt. 1

C Tpt. 2

Tbn.

B. Tbn.

Timp.

Detailed description: This system contains measures 6-10. Measure 6 is marked with a '6' above the staff. The C Tpt. 1 part has a melodic line with slurs and a sharp sign in measure 8. The C Tpt. 2 part has a similar melodic line. The Tbn. part has sustained notes with slurs. The B. Tbn. part has notes with 'x' marks in measures 7 and 9. The Timp. part has rests in measures 6-8 and a tremolo in measure 9.

PRELUDE in E MAJOR - Deigendesch - Score

11

C Tpt. 1

C Tpt. 2

Tbn.

B. Tbn.

Timp.

16

C Tpt. 1

C Tpt. 2

Tbn.

B. Tbn.

Timp.

PRELUDE in E MAJOR - Deigendesch - Score

22

C Tpt. 1

C Tpt. 2

Tbn.

B. Tbn.

Timp.

28

C Tpt. 1

C Tpt. 2

Tbn.

B. Tbn.

Timp.

PRELUDE in E MAJOR - Deigendesch - Score

33

C Tpt. 1

C Tpt. 2

Tbn.

B. Tbn.

Timp.

40

C Tpt. 1

C Tpt. 2

Tbn.

B. Tbn.

Timp.

PRELUDE in E MAJOR

Trumpets in C

(from: *Postludium for Organ*)
for Brass Quartet & Timpani

Karl Deigendesch (1839 - 1911)
Arr. Michel Rondeau

Moderato alla breve ♩ = 90

Measures 1-7 of the prelude. The music is in E major (three sharps) and common time. The first staff (treble clef) features a melodic line with a triplet of eighth notes in measure 4. The second staff (bass clef) provides a harmonic accompaniment with sustained notes and moving bass lines.

Measures 8-15. The key signature changes to E minor (three sharps and one flat) in measure 8. The melody continues with various rhythmic patterns, including eighth and sixteenth notes. The bass line remains active with sustained notes and moving lines.

Measures 16-23. The key signature changes to C major (no sharps or flats) in measure 16. The melody features a mix of eighth and quarter notes. The bass line continues with sustained notes and moving lines.

Measures 24-31. The key signature changes to E major (three sharps) in measure 24. The melody consists of quarter and eighth notes. The bass line features sustained notes and moving lines.

Measures 32-39. The key signature changes to E minor (three sharps and one flat) in measure 32. The melody continues with quarter and eighth notes. The bass line features sustained notes and moving lines.

Measures 40-47. The key signature changes to E major (three sharps) in measure 40. The melody features quarter and eighth notes. The bass line features sustained notes and moving lines, ending with a double bar line.

PRELUDE in E MAJOR

(from: *Postludium for Organ*)
for Brass Quartet & Timpani

Trumpets in D

Karl Deigendesch (1839 - 1911)

Arr. Michel Rondeau

Moderato alla breve ♩ = 90

Measures 1-7 of the score. The music is in E major and common time. The first staff (treble clef) features a melodic line with a triplet of eighth notes in measure 4. The second staff (bass clef) provides a harmonic accompaniment with sustained notes and moving bass lines.

Measures 8-15 of the score. The key signature changes to D major. The melodic line continues with various rhythmic patterns, including eighth and sixteenth notes. The bass line remains active, supporting the melody.

Measures 16-23 of the score. The key signature changes to D minor. The music features a more somber mood with a mix of eighth and sixteenth notes in both staves.

Measures 24-31 of the score. The key signature returns to E major. The melodic line is characterized by a series of eighth notes, while the bass line provides a steady accompaniment.

Measures 32-39 of the score. The music continues in E major with a focus on rhythmic patterns and sustained notes in both staves.

Measures 40-47 of the score. The final section of the prelude, ending with a double bar line. The melodic line concludes with a series of eighth notes, and the bass line provides a final accompaniment.

PRELUDE in E MAJOR

(from: *Postludium for Organ*)
for Brass Quartet & Timpani

Trombones

Karl Deigendesch (1839 - 1911)

Arr. Michel Rondeau

Moderato alla breve ♩ = 90

Measures 1-7 of the Trombone part. The music is in E major (three sharps) and common time. The upper staff contains a melodic line with eighth and quarter notes, and the lower staff provides a harmonic accompaniment with quarter and eighth notes.

Measures 8-15. Measure 8 starts with a fermata. The melodic line continues with quarter and eighth notes, while the accompaniment features a mix of quarter and eighth notes.

Measures 16-23. Measure 16 begins with a key signature change to E minor (three sharps and one flat). The melodic line uses quarter and eighth notes, and the accompaniment has a more active eighth-note pattern.

Measures 24-29. The key signature returns to E major. The melodic line consists of quarter and eighth notes, and the accompaniment is primarily quarter notes.

Measures 30-34. The melodic line features a sequence of eighth notes, and the accompaniment consists of quarter notes.

Measures 35-40. The melodic line continues with quarter and eighth notes, and the accompaniment features a mix of quarter and eighth notes.

Measures 41-48. The melodic line has a mix of quarter and eighth notes, and the accompaniment features a mix of quarter and eighth notes. The piece concludes with a final cadence in E major.

PRELUDE in E MAJOR

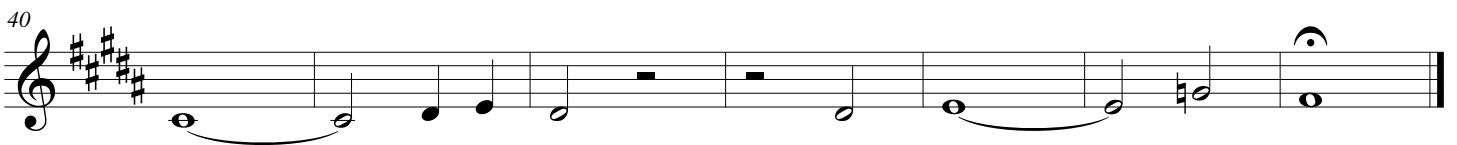
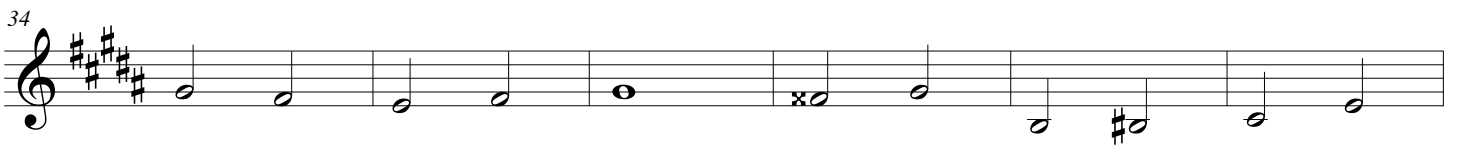
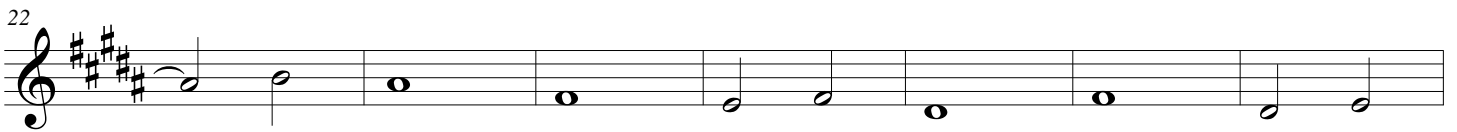
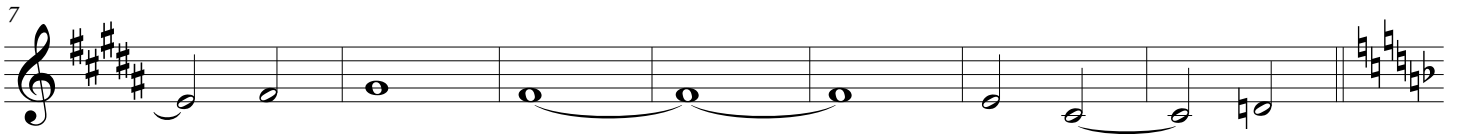
(from: *Postludium for Organ*)
for Brass Quartet & Timpani

F Horn (Trombone)

Karl Deigendesch (1839 - 1911)

Arr. Michel Rondeau

Moderato alla breve ♩ = 90



PRELUDE in E MAJOR

(from: *Postludium for Organ*)
for Brass Quartet & Timpani

Timpani B-E

Karl Deigendesch (1839 - 1911)

Arr. Michel Rondeau

Moderato alla breve ♩ = 90

The musical score for Timpani B-E consists of four staves of music. The first staff begins with a treble clef, a key signature of three sharps (F#, C#, G#), and a common time signature (C). It features a series of notes with a trill-like flourish above the first measure, followed by a four-measure rest marked with a '4'. The second staff starts at measure 10 and includes a two-measure rest marked with a '2'. The third staff starts at measure 17 and contains a five-measure rest marked with a '5', a two-measure rest marked with a '2', and a three-measure rest marked with a '3' and the interval 'C#-F#'. The fourth staff starts at measure 30 and includes a five-measure rest marked with a '5' and the interval 'B-E', followed by a series of notes with trill-like flourishes above them.